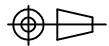


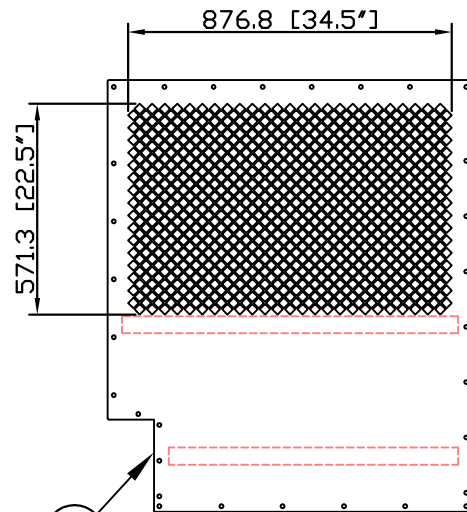
DO NOT SCALE

IF IN DOUBT ASK

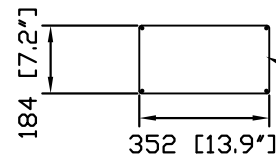


Revisions

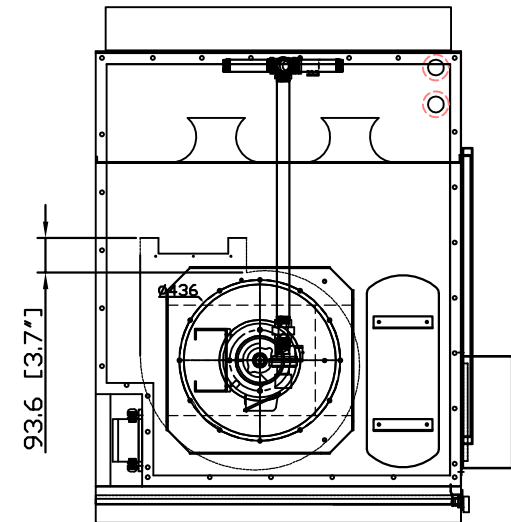
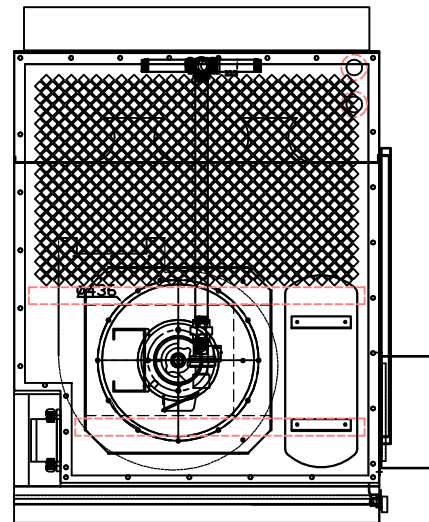
Rev	Description	Date	Approved



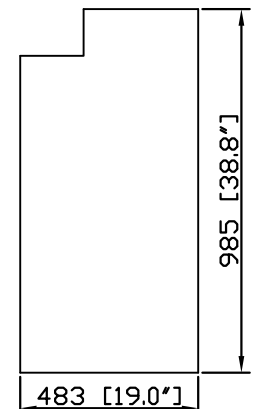
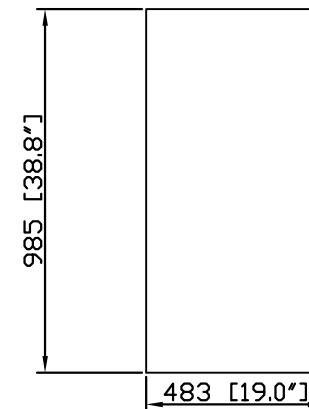
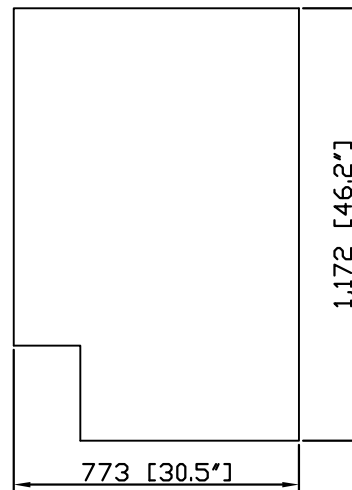
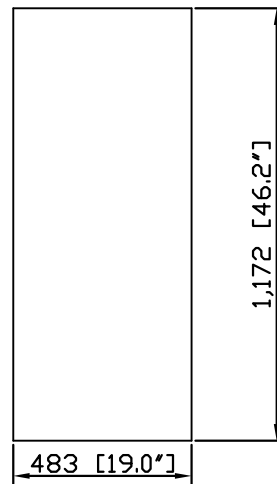
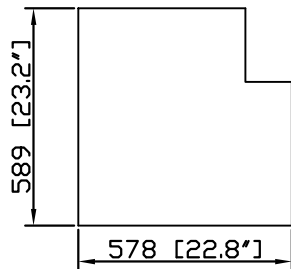
② new cover for side



① new cover for top outlet



③ the followings are new foam for interior of the blower chamber



AVANI ENVIRONMENTAL INTL. INC. Sales Department
 95 Cypress Drive (919) 570-2862
 Youngsville, NC 27596 info@avanienvironmental.com

	Date	Name
Drawn by:	2011-06-28	***
Checked by:		

Part Number:
foam retrofit

Title:
WB-4000

The drawings, AutoCAD, 3-D Models, and specifications are the property of Avani Environmental Intl. Inc. (AE) and may not be reproduced, distributed, modified, or otherwise used, except provided herein, without the express written permission of AE.

Size
A

Scale
1 = 20

Drawing Number:
A02-01-WB-4000