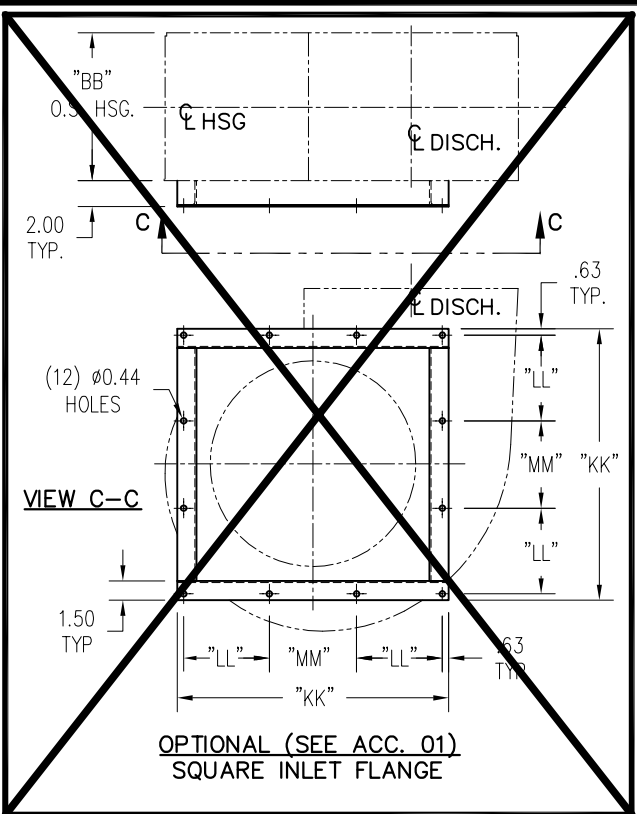


SECTION A-A

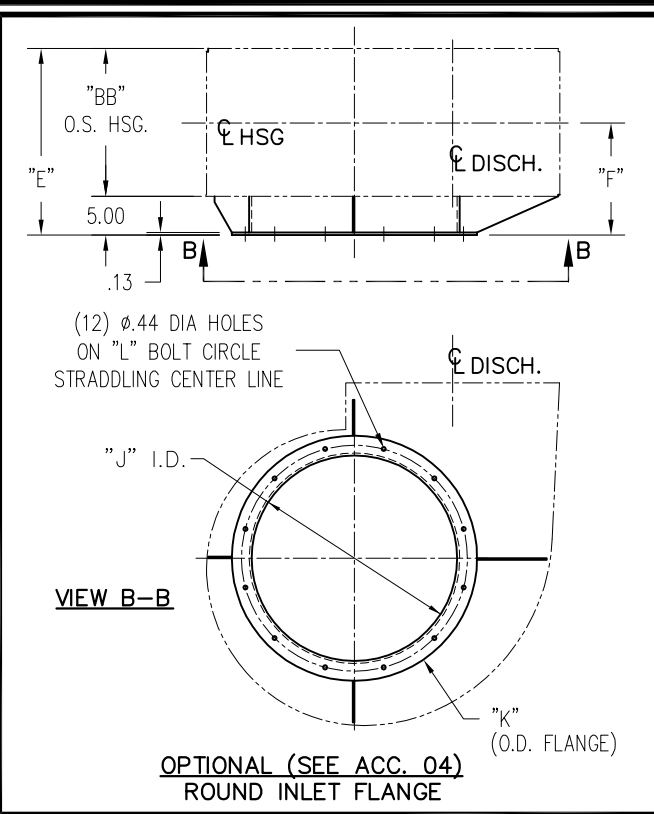
THE INFORMATION SHOWN ON THIS DRAWING IS THE EXCLUSIVE PROPERTY OF AIR CLEANING TECHNOLOGY, INC. IT IS NOT TO BE USED FOR ANY PURPOSE OR ITS CONTENTS DISCLOSED WITHOUT OUR WRITTEN CONSENT.

JOB AND LOCATION	CUSTOMER NAME	AVANI ENVIRONMENTAL	TEMP.	-	DRAWN BY	JX
	JOB NAME		ELEVATION	-	DATE	6/5/13
	JOB ID		DENSITY	-	CHKD BY	
	LOCATION		C.F.M.	6000	DATE	6/5/13
	ENG/ARCH.		S.P.	10	MOTOR WT	-
	S.O. NUMBER		R.P.M.	3600	FAN WT	-
	TAG UNIT		B.H.P.	15	SCALE	1:25

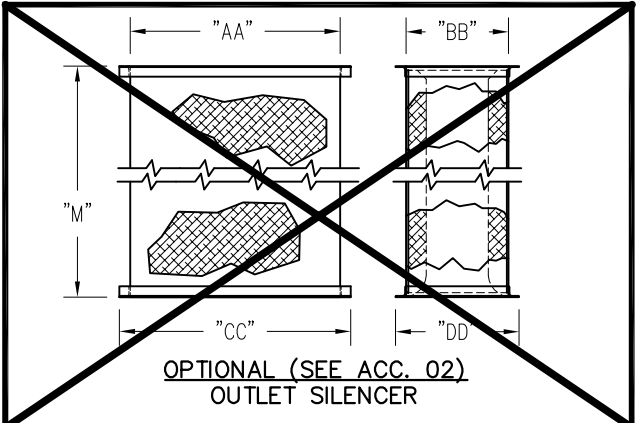
REV	ECN	DATE	BY	CHK	DESCRIPTION
<p>ACT. DUST COLLECTORS Air Cleaning Technology, Inc. 13310 Industrial Park Blvd, Suite 195 - Plymouth, MN 55441</p>					
TITLE					
SDC-3-12-15HP-DD					
DUST COLLECTOR ASSEMBLY					
DRAWING NO.			ROW	ITEM	SHEET
BC 15479			001	00	1 OF 1



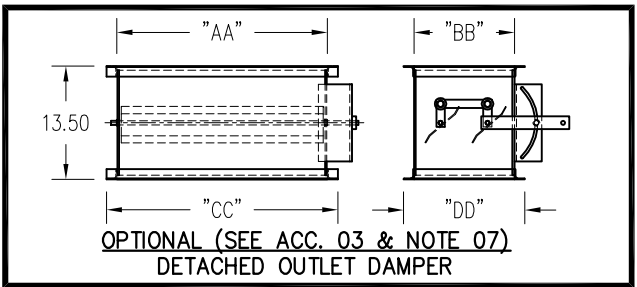
OPTIONAL (SEE ACC. 01)
SQUARE INLET FLANGE



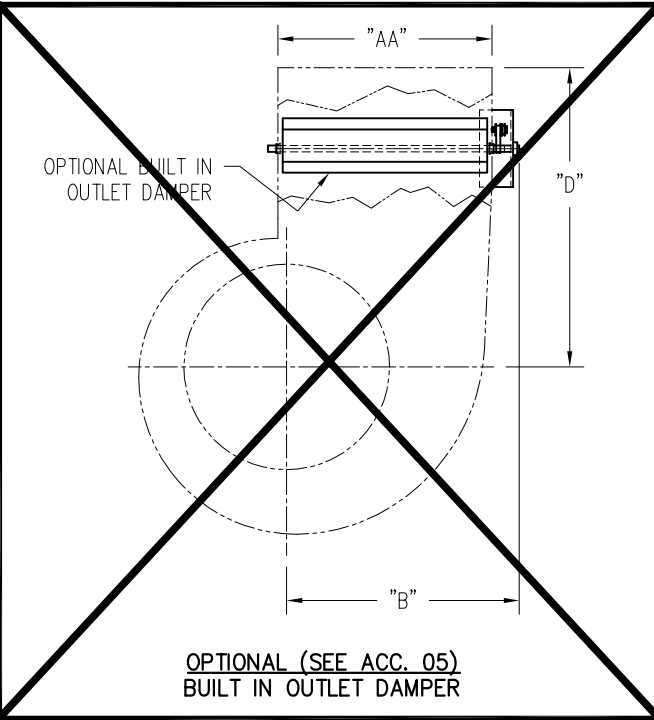
OPTIONAL (SEE ACC. 04)
ROUND INLET FLANGE



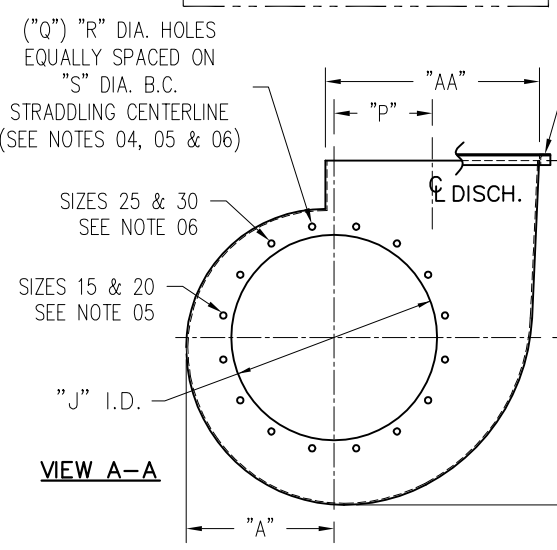
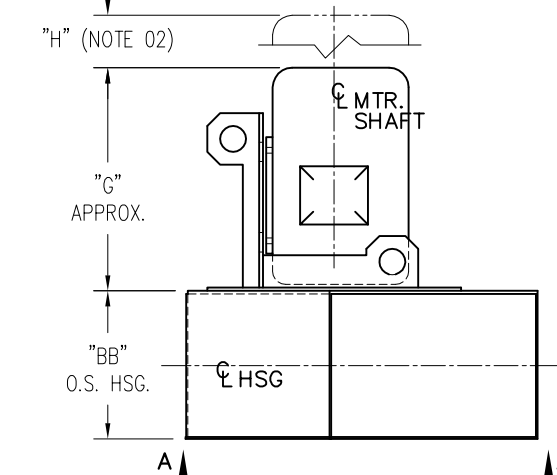
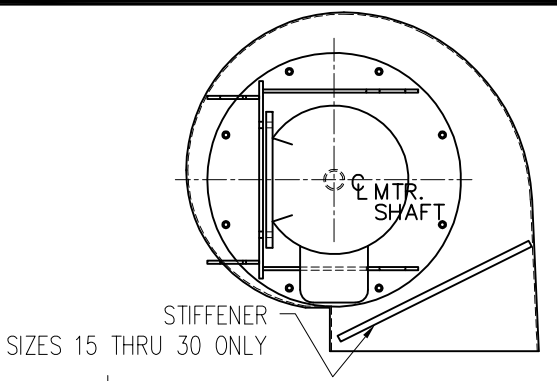
OPTIONAL (SEE ACC. 02)
OUTLET SILENCER



OPTIONAL (SEE ACC. 03 & NOTE 07)
DETACHED OUTLET DAMPER

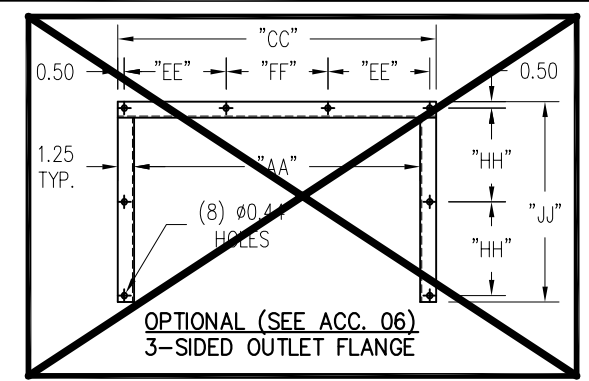


OPTIONAL (SEE ACC. 05)
BUILT IN OUTLET DAMPER

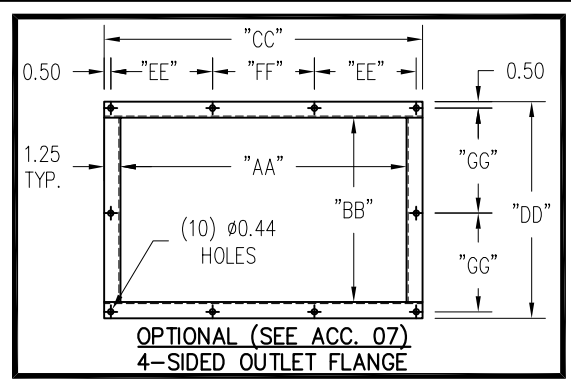


STANDARD DESIGN
ARR. 4VI (VERTICAL INLET); SEE NOTE 08
FLUSH MOUNTED

FLANGE PATTERNS FOR SIZES 3 THRU 30												
SIZE	AA	BB	CC	DD	EE	FF	GG	HH	JJ	KK	LL	MM
3	13.44	8.75	15.94	11.25	5.00	4.94	5.13	4.00	10.00	21.00	6.63	6.50
5	14.81	9.44	17.31	12.00	5.44	5.44	5.50	4.38	10.69			
7.5	14.81	10.75	17.31	13.25	5.44	5.44	6.13	5.00	12.00			
10	14.81	11.50	17.31	14.00	5.44	5.44	6.50	5.38	12.75	26.00	8.25	8.25
15	20.00	12.00	22.50	14.50	7.19	7.13	6.75	5.63	13.25			
20	20.00	14.00	22.50	16.50	7.19	7.13	7.75	6.63	15.25			
25	22.13	13.25	24.63	15.75	7.88	7.88	7.38	6.25	14.50	26.00	8.25	8.25
30	22.13	14.25	24.63	16.75	7.88	7.88	7.88	6.75	15.50			



OPTIONAL (SEE ACC. 06)
3-SIDED OUTLET FLANGE



OPTIONAL (SEE ACC. 07)
4-SIDED OUTLET FLANGE

OPTIONAL ACCESSORIES (SEE SHOP ORDER):

- 01. SQUARE INLET FLANGE; PUNCHED PER DETAIL
- 02. OUTLET SILENCER PER AC1003038 (SUPPORTED BY OTHERS IN FIELD)
- 03. DETACHED OUTLET DAMPER
- 04. ROUND INLET FLANGE; PUNCHED PER DETAIL
- 05. BUILT IN OUTLET DAMPER
- 06. 3-SIDED OUTLET FLANGE; PUNCHED PER DETAIL
- 07. 4-SIDED OUTLET FLANGE; PUNCHED PER DETAIL
- 08. OUTLET SCREEN

STANDARD ACCESSORIES (SEE SHOP ORDER):

- 01. SHAFT SEAL - STD TYPE
- 02. MOTOR DATA: 15 HP, 3600 RPM, 3/60/230-460 PH/HZ/VOLTS, 254T FRAME, FURN. & MTD. BY TCF.
- 03. SPECIAL PAINT - AEROVENT GRAY
- 04. CRATE PER SHIPPING STANDARD #3

NOTES:

- 01. "CW" ROTATION SHOWN; "CCW" ROTATION SIMILAR BUT OPPOSITE.
- 02. NECESSARY CLEARANCE FOR WHEEL REMOVAL.
- 03. DIMENSION SHOWN FOR USE WITH OUTLET FLANGE OPTION.
- 04. FANS WITH INLET FLANGE (SQUARE OR ROUND) DO NOT HAVE MOUNTING HOLES IN HOUSING INLET SIDE.
- *05. SIZES 15 & 20 ELIMINATE THIS HOLE.
- *06. SIZES 25 & 30 ELIMINATE THIS HOLE.
- 07. DAMPER HANDLE SHOULD ALWAYS BE LOCATED AT THE MOTOR SIDE.
- 08. ARRANGEMENT 4VI (VERTICAL INLET) SHOWN; ARRANGEMENT 4HI (HORIZONTAL INLET) SIMILAR, BUT MOTOR & FAN MOUNTED HORIZONTALLY. (SUPPORT REQUIRED BY CUSTOMER)

SIZES 3 THRU 30																	
SIZE	A	B	C	D	E	F	G	H	J	K	L	M	N	P	Q	R	S
3	10.25	18.19	11.63	22.50	13.75	9.38	17.00	6.00	13.81	17.81	15.81	36.00	14.13	7.63	8	0.44	17.25
5	11.44	19.75	12.94	22.63	14.44	9.75	17.00	6.00	15.38	19.50	17.50			8.50			
7.5	11.44	19.75	12.94	23.00	15.69	10.38	21.00	7.00	15.38	19.50	17.50			8.50			
10	11.44	19.75	12.94	23.13	16.44	10.75	21.00	8.00	15.38	19.50	17.50	60.00	17.13	8.94	16*	0.56	28.50
15	14.94	22.81	18.00	26.25	17.00	11.00	26.00	8.00	19.50	23.50	21.50			8.94			
20	14.94	22.81	18.00	26.75	18.94	12.00	26.00	10.00	19.50	23.50	21.50			8.94			
25	16.69	24.94	20.06	26.63	18.25	11.63	28.00	10.00	21.38	25.50	23.50	28.00	10.00	9.94	21.38	25.50	23.50
30	16.69	24.94	20.06	26.88	19.25	13.13	28.00	10.00	21.38	25.50	23.50			9.94			

JOB AND LOCATION	JOB	AIR CLEANING TECHNOLOGIES, INC
	LOCATION	
	CONTRACTOR	
	LOCATION	
	ENG./ARCH.	
	S.O. NUMBER	489428 (APP)
TAG UNIT	TCBI 15	

PERFORMANCE	DENS.	0.075 LB/FT ³
	C.F.M.	-
	S.P.	-
	R.P.M.	3450
	B.H.P.	-
	T.S.	16005
O.V.	-	

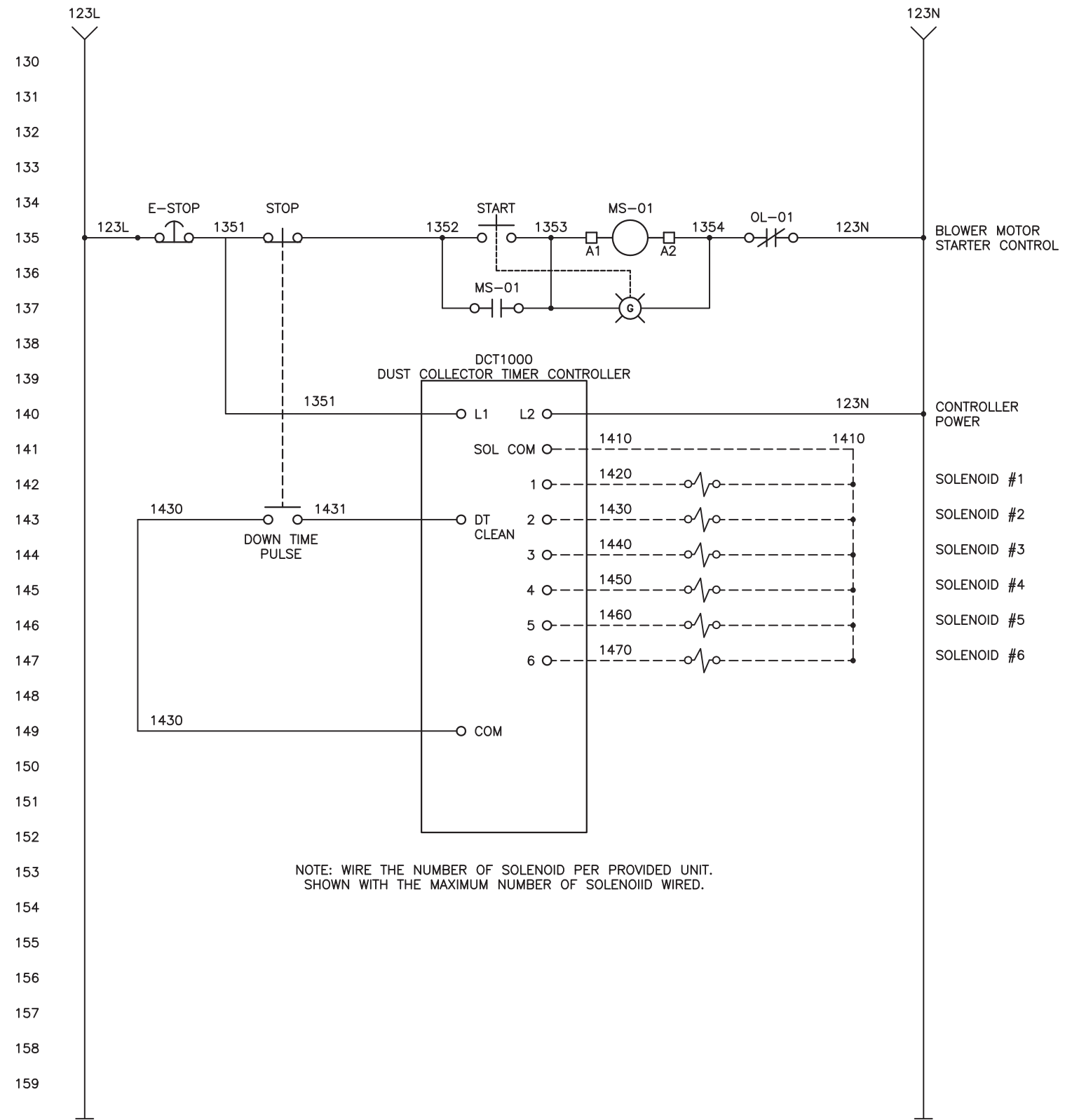
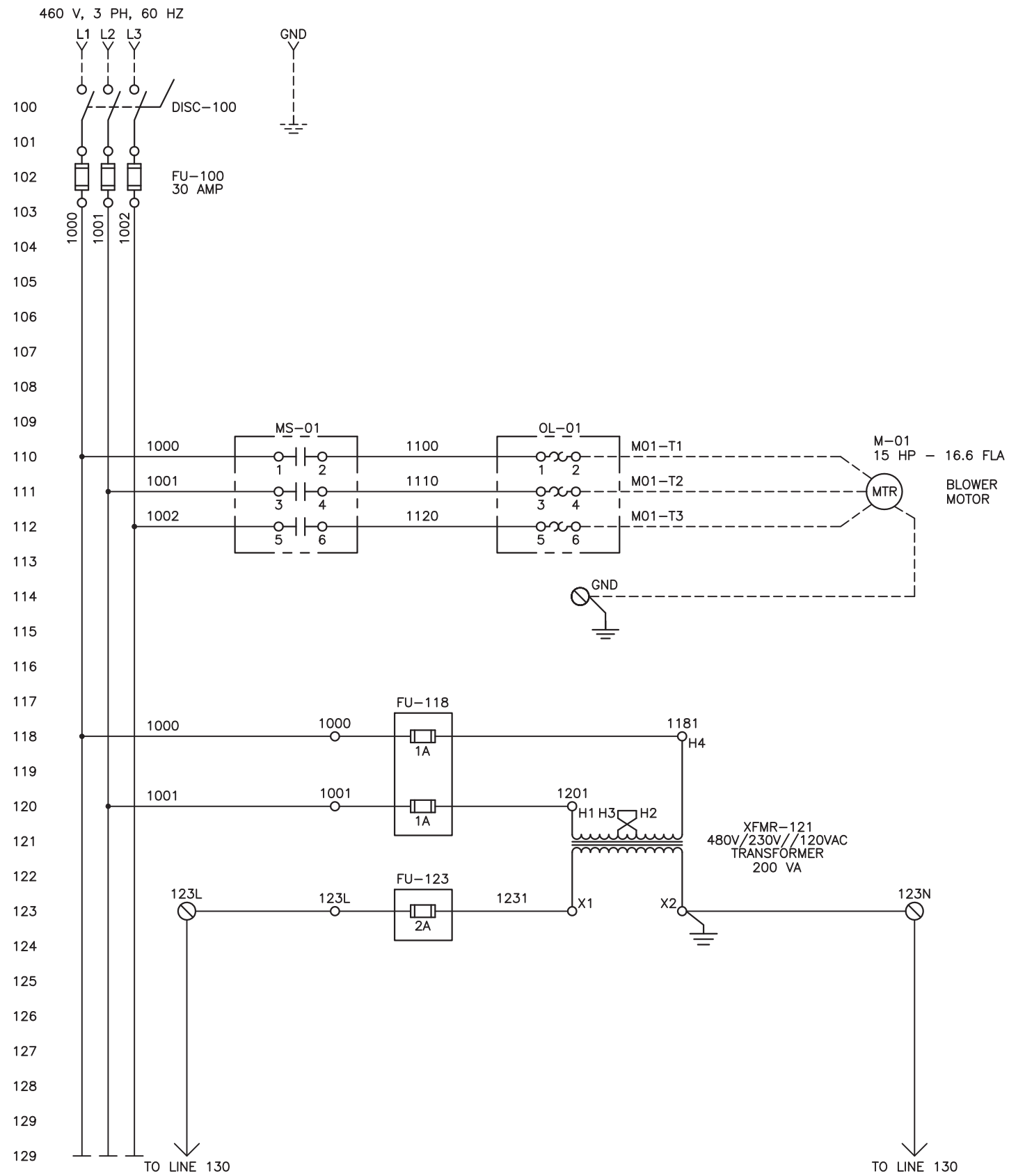
Twin City Fan Companies, Ltd.

Aerovent • Fiber-Aire • TC Axial • TC Ventco • Twin City Fan & Blower

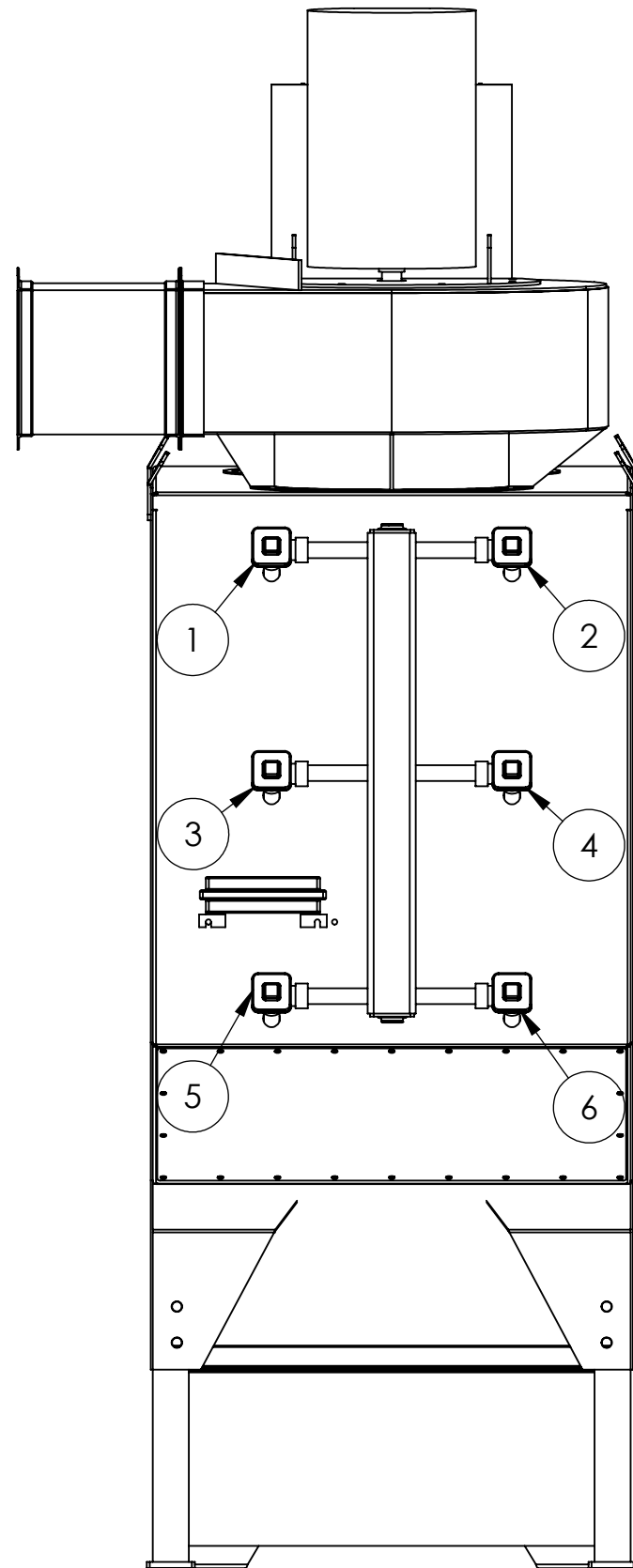
Member of Air Movement and Control Association

5959 Trenton Lane - Minneapolis, MN 55442-3238

TITLE		TCBI SIZES 3 THRU 30, ARRANGEMENT 4VI (VERTICAL INLET MOUNTED) ARRANGEMENT 4HI (HORIZONTAL INLET MOUNTED)		
SCALE	DRAWING NO.	ROW/SHEET	ITEM	REV.
NTS	BC1003044	-	-	




THIS DRAWING IS CONFIDENTIAL PROPERTY OF ENGINEERING FIRM DO NOT DUPLICATE IN ANY TYPE WITHOUT PROPER WRITTEN PERMISSION. IF YOU ARE NOT THE INTENDED CLIENT PLEASE DESTROY THIS DOCUMENT.			DUST COLLECTOR BLOWER PACKAGE 480VAC, 3 PHASE - 15 HP WITH DUST COLLECTOR TIMER CONTROLLER		
REV.	DESCRIPTION	DATE	FILE PATH: c:/clients/	PLOT DATE: 01/01/04	
1	CREATED	7/28/08			
	DRAWN BY: ECS	DATE: 7/28/08	DRAWING SCALE: NONE	CLIENT: AIR CLEANING TECH, INC	DRAWING NUMBER: 15 HP 100
	CHECKED BY: ECS	DATE: 7/28/08		PROJECT NUMBER:	



THE INFORMATION SHOWN ON THIS DRAWING IS THE EXCLUSIVE PROPERTY OF AIR CLEANING TECHNOLOGY, INC. IT IS NOT TO BE USED FOR ANY PURPOSE OR ITS CONTENTS DISCLOSED WITHOUT OUR WRITTEN CONSENT.

JOB AND LOCATION	CUSTOMER NAME	AVANI ENVIRONMENTAL		
	JOB NAME			
	JOB ID			
	LOCATION			
	ENG/ARCH.			
	S.O. NUMBER			
	TAG UNIT			
PERFORMANCE	TEMP.	-	DRAWN BY	JX
	ELEVATION	-	DATE	6/5/13
	DENSITY	-	CHKD BY	
	C.F.M.	6000	DATE	6/5/13
	S.P.	10	MOTOR WT	-
	R.P.M.	3600	FAN WT	-
	B.H.P.	15	SCALE	1:15

REV	ECN	DATE	BY	CHK	DESCRIPTION
 <p>ACT. DUST COLLECTORS Air Cleaning Technology, Inc. 13310 Industrial Park Blvd, Suite 195 - Plymouth, MN 55441</p>					
TITLE					
SDC-3-12-15HP-DD					
DIAPHRAGM LOCATIONS					
DRAWING NO.			ROW	ITEM	SHEET
BC 15479			001	01	1 OF 1
REV.					