



Date: May 22, 2012

To: Airgas

Project:

Attn: Mr. Bill Blackerby

Recommended Equipment:

(1) SDC-15-8MD Cartridge Collector Drawer Type

- 6,400CFM @ 8" SP

- normal 12" x 52"L polyester cartridges

Hood:

- 7 feet x 14 feet hood

- 7 feet x 10 feet hood

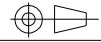
Avani Environmental Inc.
95 Cypress Drive
Youngsville, NC 27596
www.avanienvironmental.com

Phone: (919) 570-2862
Fax: (919) 570-2863
Email: info@avanienvironmental.com
www.weldingbooths.com

The drawings, AutoCAD, 3-D Models, and specifications are the property of Avani Environmental Inc. (AE) and may not be reproduced, distributed, modified, or otherwise used, except provided herein, without the express written permission of AE.

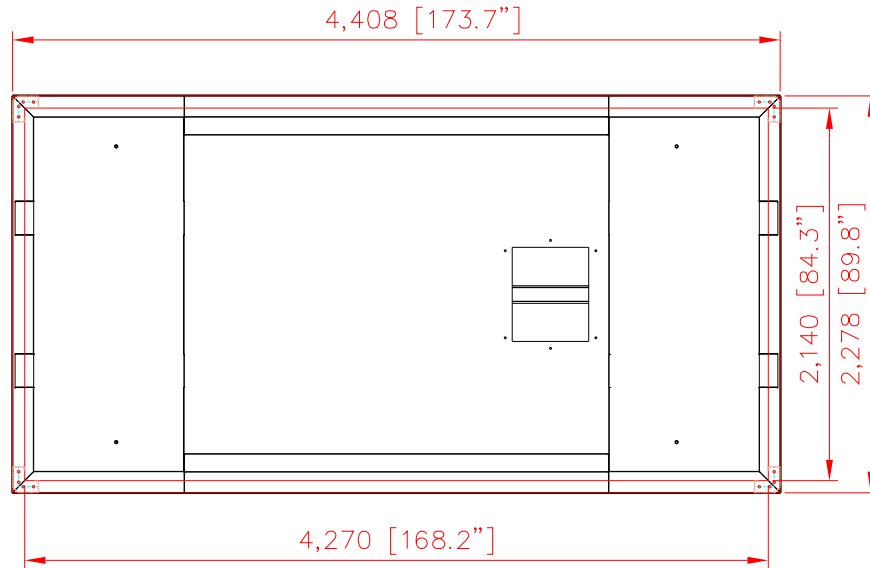
DO NOT SCALE

IF IN DOUBT ASK

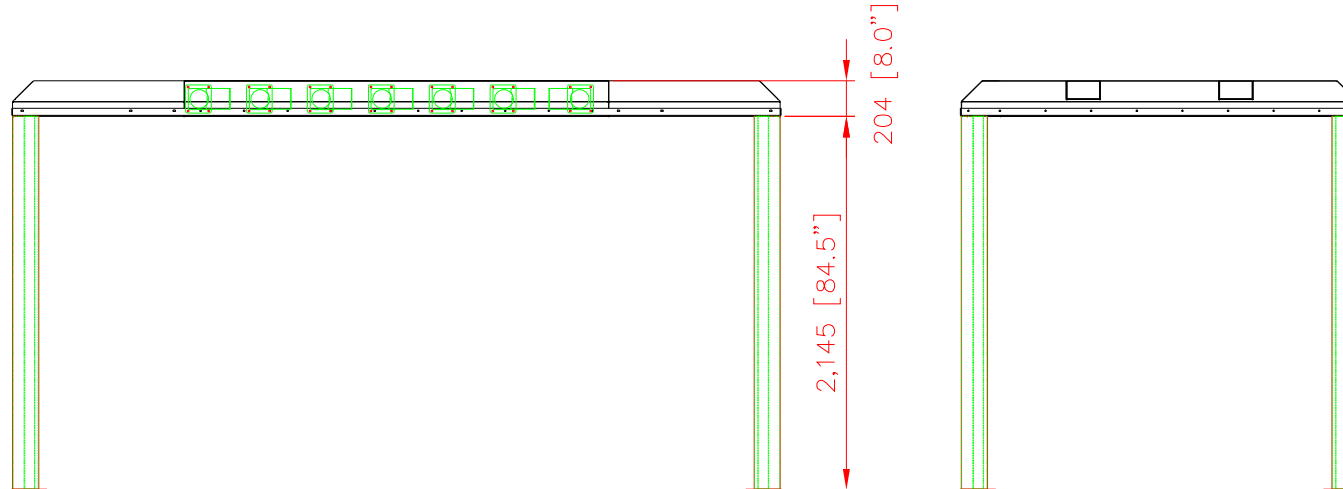


Revisions

Rev	Description	Date	Approved



7'W (2140) * 14'D (4270)



AVANI ENVIRONMENTAL INTL. INC. Sales Department
 95 Cypress Drive (919) 570-2862
 Youngsville, NC 27596 info@avanienvironmental.com

Date	Name	Part Number:
2012-05-22	***	***

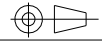
The drawings, AutoCAD, 3-D Models, and specifications are the property of Avani Environmental Intl. Inc. (AE) and may not be reproduced, distributed, modified, or otherwise used, except provided herein, without the express written permission of AE.

Title: **ROBO Hood 7'W x 14'D x 7'H**

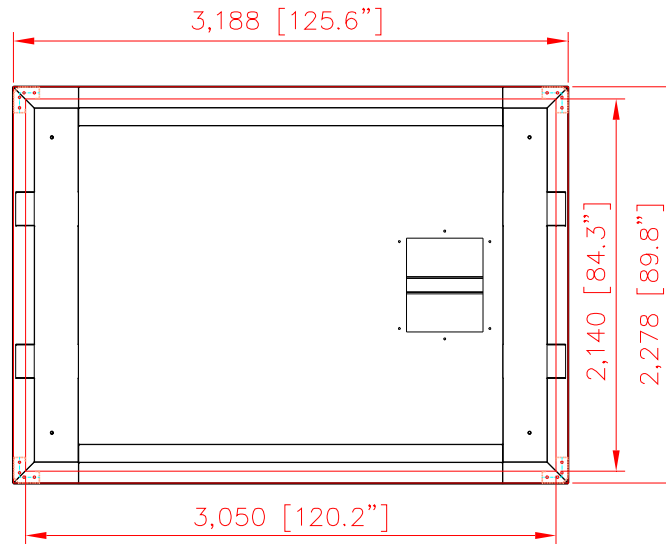
Size	Scale	Drawing Number:
A	1 = 1	***

DO NOT SCALE

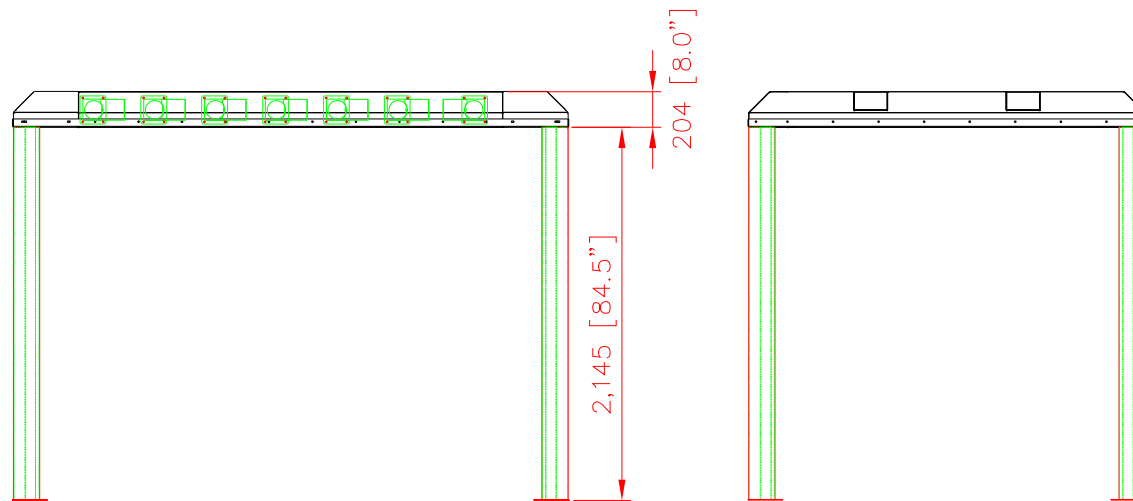
IF IN DOUBT ASK



Revisions			
Rev	Description	Date	Approved



7'W (2140) * 10'D (3050)



AVANI ENVIRONMENTAL INTL. INC. Sales Department
 95 Cypress Drive
 Youngsville, NC 27596
 (919) 570-2862
 info@avanienvironmental.com

	Date	Name	Part Number:	Title:
Drawn by:	2012-05-22	***	***	ROBO Hood 7'W x 10'D x 7'H
Checked by:				
The drawings, AutoCAD, 3-D Models, and specifications are the property of Avani Environmental Intl. Inc. (AE) and may not be reproduced, distributed, modified, or otherwise used, except provided herein, without the express written permission of AE.				Size A

Scale	Drawing Number:
1 = 1	***

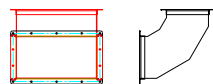
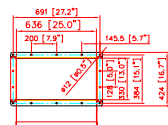
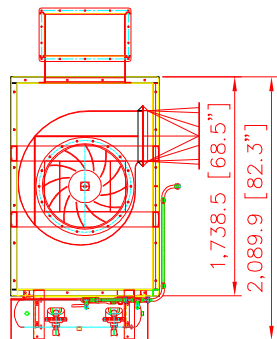
DO NOT SCALE

IF IN DOUBT ASK

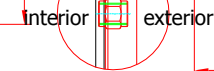
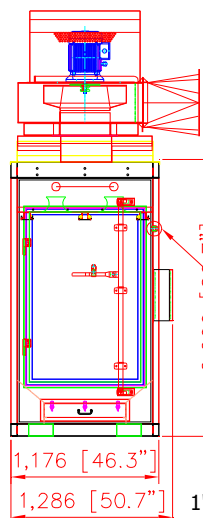


Revisions			
Rev	Description	Date	Approved

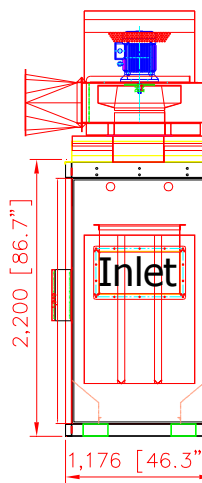
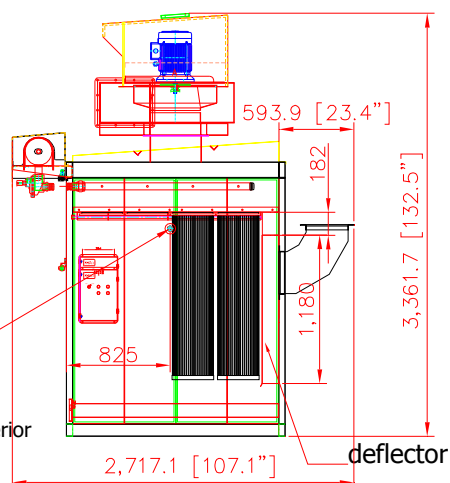
- SDC-15-8MD SPECIFICATION -



- Direct Drive Blower (on the machine top)
- Motor: 15HP x 1 pc
- CFM: 6,400 ft3/min @ 8" SP
- Include:
 - UL Individual Control Box for Cartridge Collector and Blower
- Inlet: 636 x 330 mm (25" x 13")
- Cartridge Filter: Dia. 325mm x 1320mm x 8pcs (Dia. 12.8" x 52" x 8pcs)
- Material: Polyester with TEFLON coating.
- Filter Area: 19m2 x 8 = 152m2 (1635.52 ft2)
- Pleat Depth: 48mm
- Horizontal Positioned Filters,
- Continuous Welded Seams,
- Gasket and Latched Doors,
- Powder Coated Paint and
- Reverse Jet Pulse Cleaning
- Include:
 - Filter Chamber
 - Inlet Square Pipe (need dimensions)
 - Fan/motor combination
- No. of Valves: 2
- Inlet Air: 4"
- Compressed Air Requirement: 90 PSI
- Compressed Air Reservoir: 7.9 gallon
- Dimension: 50.7" x 107.1" x 132.5" (1286 x 2717.1 x 3361.7mm)
- Construction: 13 Gauge for panel; 11 Gauge Steel Cabinet
- Max. Operating Temp.: 120°C
- Paint Color: Blue



1" connector welded to the collector

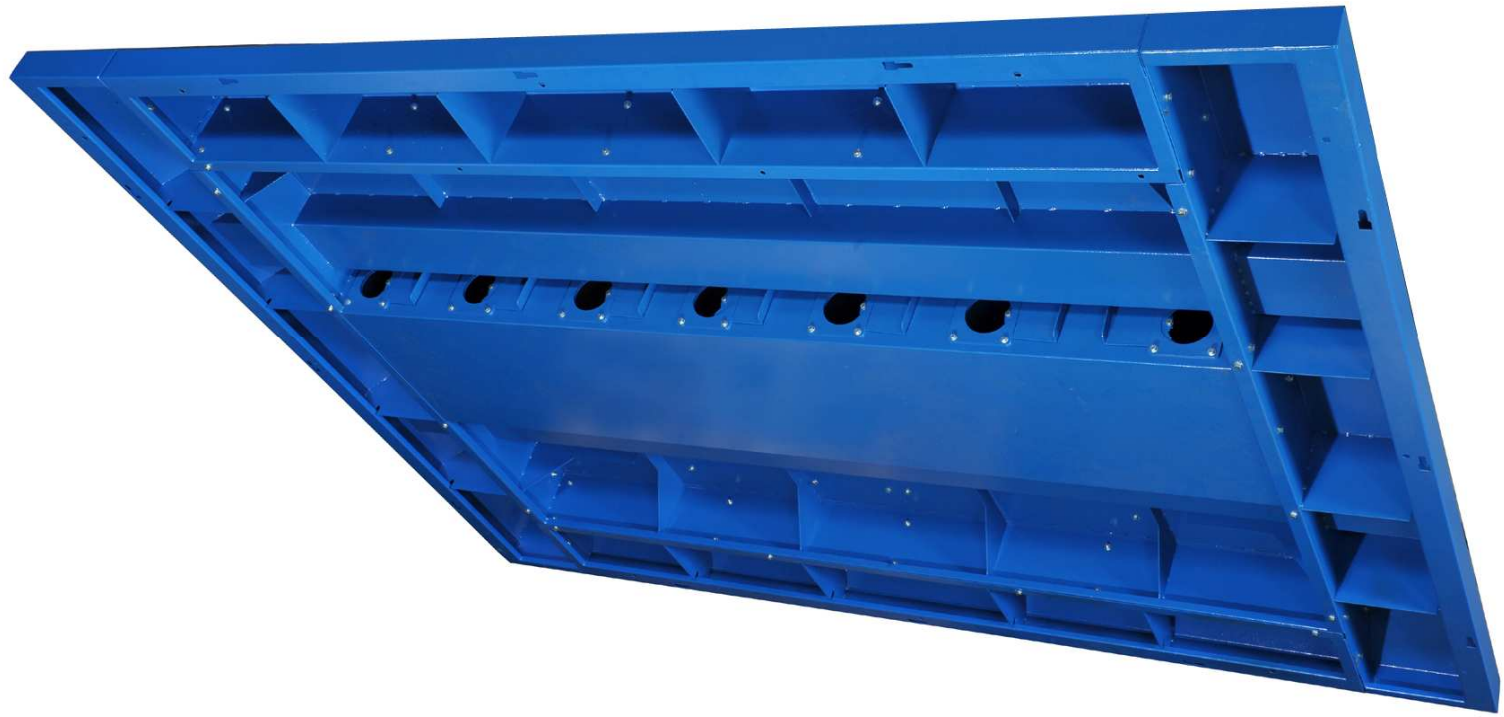


*** (1) control panel controls pulse system and blower.

AVANI ENVIRONMENTAL INTL. INC. Sales Department
 95 Cypress Drive (919) 570-2862
 Youngsville, NC 27596 info@avanienvironmental.com

Date	Name	Part Number:	Title:
2012-03-12	***	SDC-15-8MD	Cartridge Collector (mezzanine drawer type)
Drawn by:	Checked by:	The drawings, AutoCAD, 3-D Models, and specifications are the property of Avani Environmental Intl. Inc. (AE) and may not be reproduced, distributed, modified, or otherwise used, except provided herein, without the express written permission of AE.	

Size	Scale	Drawing Number:
A	1 = 1	SVL-800-01

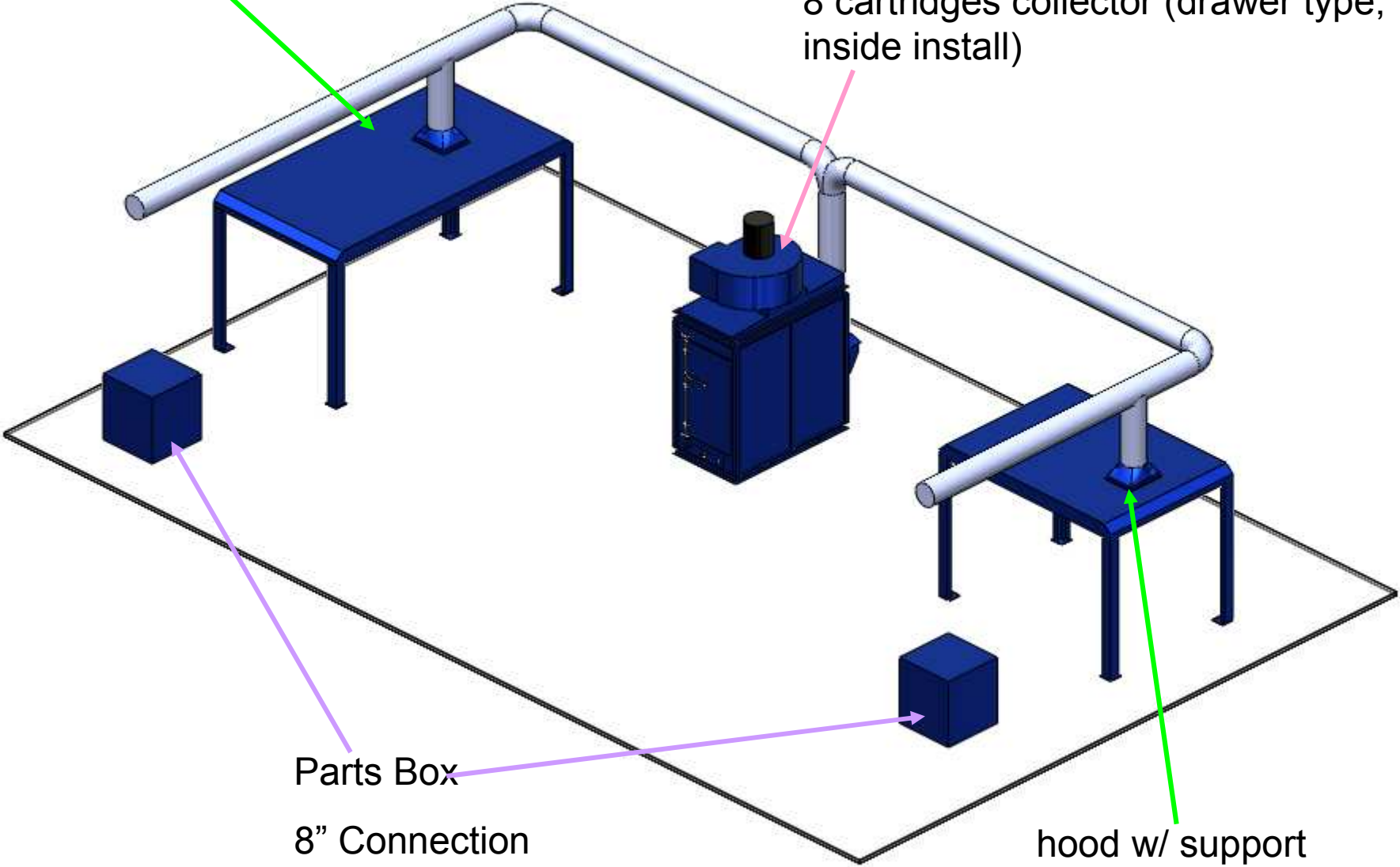


hood w/ support

7 feet x 14 feet

SDC-15-8MD (6,400CFM @ 8"SP)

(1) 15HP top mounted fan on (1) large
8 cartridges collector (drawer type,
inside install)



Parts Box

8" Connection

hood w/ support

7 feet x 10 feet

