



**Date:** September 27, 2011

**To:** MSI

**Project:**

**Attn:** Mr. William F. Bailey

**Recommended Equipment:**

- (1) SDC-15-16 Cartridge Collector Drum Type
  - 6,400 CFM @ 8" SP
  - normal 52"L polyester cartridges
  - inlet: dia. 16" (angle flange)
  - explosion vent: 24"W x 36"H x 2pcs

---

**Avani Environmental Inc.**  
95 Cypress Drive  
Youngsville, NC 27596  
[www.avanienvironmental.com](http://www.avanienvironmental.com)

Phone: (919) 570-2862  
Fax: (919) 570-2863  
Email: [info@avanienvironmental.com](mailto:info@avanienvironmental.com)  
[www.weldingbooths.com](http://www.weldingbooths.com)

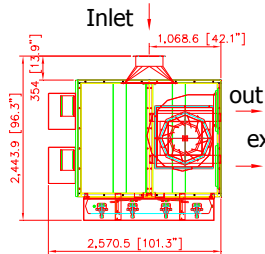
The drawings, AutoCAD, 3-D Models, and specifications are the property of Avani Environmental Inc. (AE) and may not be reproduced, distributed, modified, or otherwise used, except provided herein, without the express written permission of AE.

DO NOT SCALE

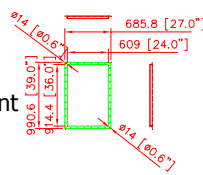
IF IN DOUBT ASK



Revisions			
Rev	Description	Date	Approved

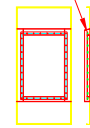


out  
explosion vent

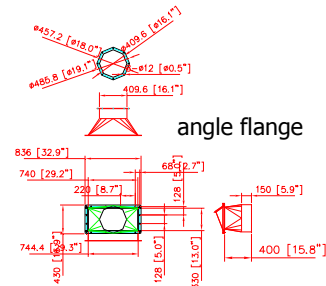


screws:  
1/2"\*1-1/2" (total 68 pcs for 2 vents)

weld 1/2" nut-



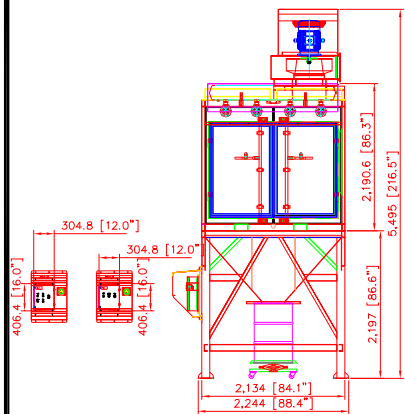
angle flange



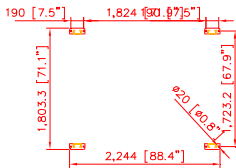
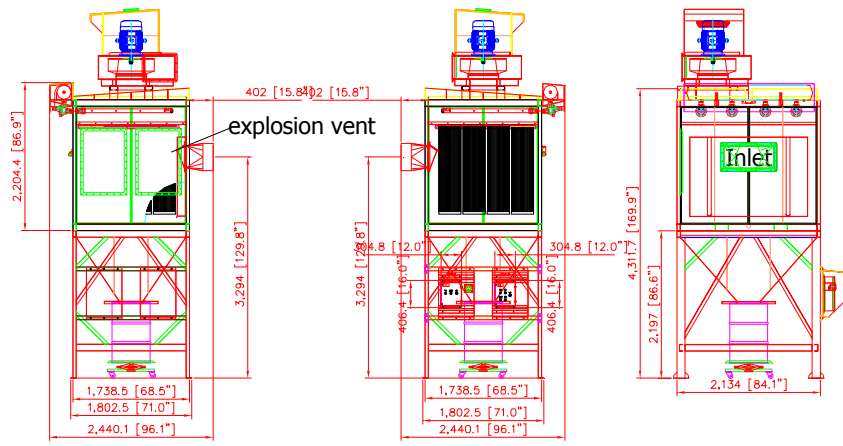
- SDC-15-16 SPECIFICATION -

- Direct Drive Blower (on top)
- Motor: 15HP x 1 pc
- CFM: 6,400 ft<sup>3</sup>/min @ 8" SP
- Include:
  - UL Individual Control Boxes for Cartridge Collector and Blowers
- \*\*\*Inlet: Dia. 16" (will provide inlet square to round)
- Cartridge Filter: Dia. 325mm x 1320mm x 16pcs (Dia. 12.8" x 52" x 16pcs)
- Material: Polyester with TEFLON coating.
- Filter Area: 19m<sup>2</sup> x 16 = 304 m<sup>2</sup> (3271.04 ft<sup>2</sup>)
- Pleat Depth: 48mm
- Horizontal Positioned Filters,
- Continuous Welded Seams,
- Gasket and Latched Doors,
- Powder Coated Paint and
- Reverse Jet Pulse Cleaning
- Include:
  - Drum & Jack Lifting Tool
  - Filter Chamber
  - Hopper
  - Inlet Square Pipe (need dimensions)
  - Fan/motor combinations
- No. of Valves: 4
- Inlet Air: 4" <sup>3</sup>
- Compressed Air Requirement: 90 PSI
- Compressed Air Reservoir: 15.8 gallon
- Dimension: 88.4" x 96.1" x 216.5" (2244 x 2440.1 x 5495mm)
- Construction: 13 Gauge for panel; 11 Gauge Steel Cabinet
- Max. Operating Temp.: 120°C
- Paint Color: Blue

\*\*\*hole for explosion vent: 24"W x 36"H x 2pcs  
 \*\*\*pulse control box run off of 120V, 1-phase, no transformer inside pulse box.



pulse control box on the left  
 blower control box on the left



PLAN DETAIL

AVANI ENVIRONMENTAL INTL. INC. Sales Department  
 95 Cypress Drive  
 Youngsville, NC 27596  
 info@avanienvironmental.com

Date	2011-09-27	Name	***
Drawn by:	2011-09-01	Checked by:	

Part Number:  
SDC-15-16

Title:  
Large Cartridge Collector

The drawings, AutoCAD, 3-D Models, and specifications are the property of Avani Environmental Intl. Inc. (AE) and may not be reproduced, distributed, modified, or otherwise used, except provided herein, without the express written permission of AE.

Size  
**E**

Scale  
1 = 1

Drawing Number:  
SV-1600-15-02

