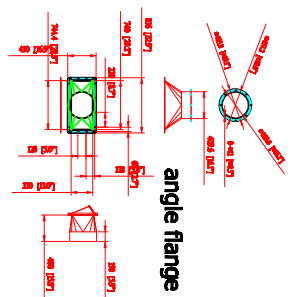
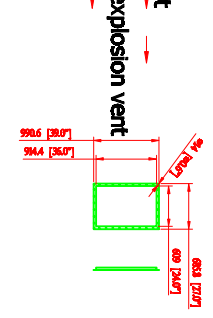
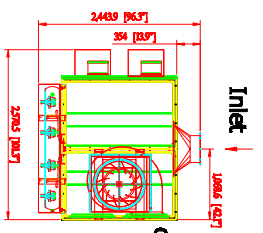


DO NOT SCALE

IF IN DOUBT ASK



Rev	Description	Date	Approved



- SDC-15-16 SPECIFICATION -

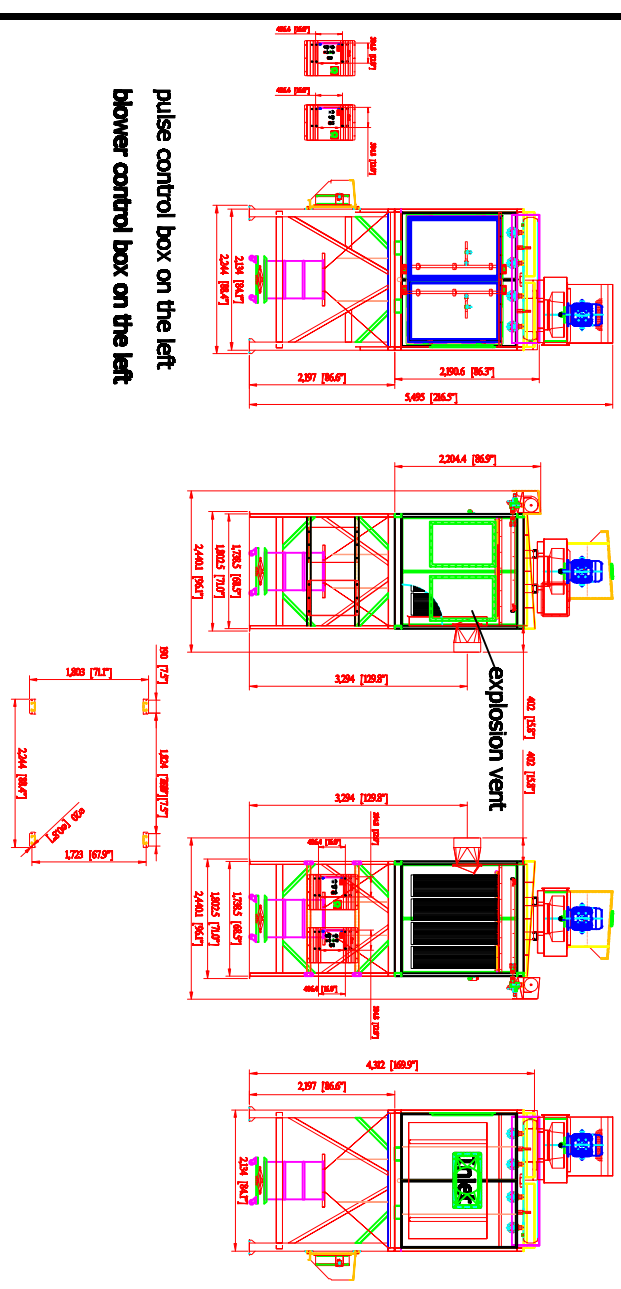
- Direct Drive Blower (on top)
- Motor: 15HP x 1 pc
- CFM: 6,400 f3/min @ 8" SP
- Include:
- - UL Individual Control Boxes for Cartridge Collector and Blowers

- ***Inlet: Dia. 16" (will provide inlet square to round)
- Cartridge Filter: Dia. 325mm x 1320mm x 16pcs (Dia. 12.8" x 52" x 16pcs)
- Material: Polyester with TEFLON coating.
- Filter Area: 19m2 x 16 = 304 m2 (3271.04 ft2)
- Pleat Depth: 48mm

- Horizontal Positioned Filters, Continuous Welded Seams, Gasket and Latched Doors, Powder Coated Paint and Reverse Jet Pulse Cleaning
- Include:
- - Drum & Jack Lifting Tool
- - Filter Chamber
- - Hopper
- - Inlet Square Pipe (need dimensions)
- - Fan/motor combinations
- No. of Valves: 4
- Inlet Air: 4" ³
- Compressed Air Requirement: 90 PSI
- Compressed Air Reservoir: 15.8 gallon
- Dimension: 88.4" x 96.1" x 216.5" (2244 x 2440.1 x 5495mm)
- Construction: 1/3 Gauge for panel; 1/1 Gauge Steel Cabinet
- Max. Operating Temp.: 120°C
- Paint Color: Blue

***hole for explosion vent: 24"W x 36"H x 2pcs

pulse control box on the left
blower control box on the left



PLAN DETAIL

AVANT ENVIRONMENTAL INTL. INC. Sales Department
95 Cypress Drive
Youngsville, NC 27596

(919) 570-2862
Info@avantenvironmental.com

Date	Name
2011-09-01	***
2011-09-31	

Part Number:
SDC-15-16

Title:
Large Cartridge Collector

The drawing, AutoCAD, 3-D Models, and specifications are the property of Avant Environmental Int'l. Inc. (A/E) and may not be reproduced, distributed, modified, or otherwise used, except provided herein, without the express written permission of A/E.

Size	Scale	Drawing Number:
D	1 = 1	SV-1600-15-02