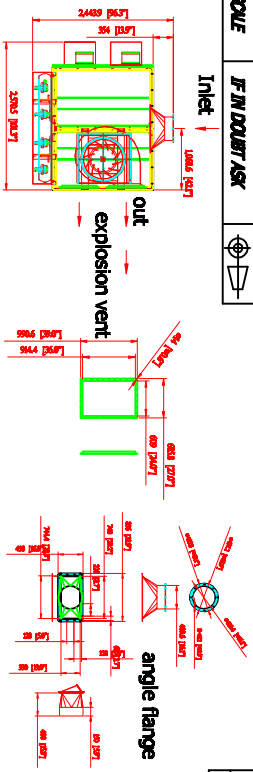


DO NOT SCALE IF IN DOUBT ASK



Rev	Description	Date	Approval

**- SDC-15-16 SPECIFICATION -**

- Direct Drive Blower (on top)
- Motor: 15HP x 1 pc
- CFM: 6,400 f3/min @ 8" SP
- Include:
  - UL Individual Control Boxes for Cartridge Collector and Blowers

\*\*\*Inlet: Dia. 16" (will provide inlet square to round)

Cartridge Filter: Dia. 325mm x 1320mm x 16pcs

(Dia. 12.8" x 52" x 16pcs)

Material: Polyester with TEFELON coating.

Filter Area: 19m2 x 16 = 304 m2 (3271.04 f2)

Pleat Depth: 48mm

Horizontal Positioned Filters, Continuous Welded Seams, Gaskets and Latched Doors, Powder Coated Paint and Reverse Jet Pulse Cleaning

Include:
 

- Drum & Jack Lifting Tool
- Filter Chamber
- Hopper
- Inlet Square Pipe (fixed dimensions)
- Fan/motor combinations

No. of Valves: 4

Inlet Air: 3

Compressed Air Requirement: 90 PSI

Compressed Air Reservoir: 15.8 gallon

Dimension: 88.4" x 96.1" x 216.5"

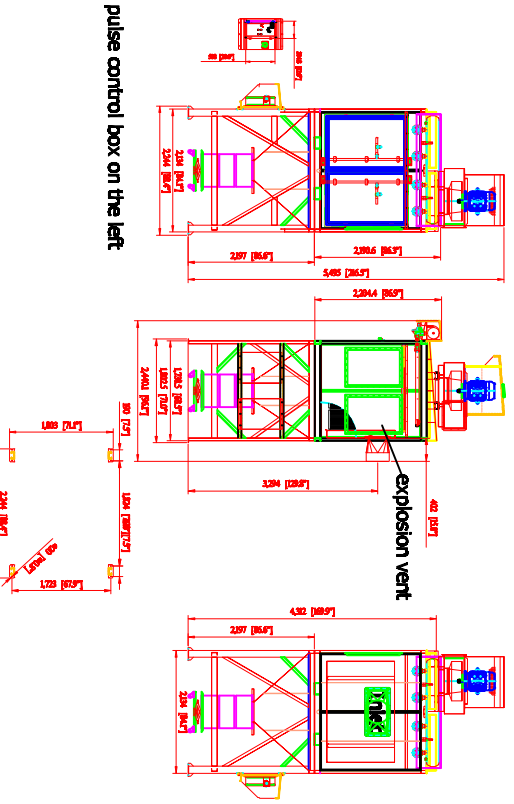
Construction: (2244 x 2440, 1 x 595mm)

Construction: 13 Gauge for panel; 11 Gauge Steel Cabinet

Max. Operating Temp.: 120°C

Paint Color: Blue

\*\*\*note for explosion vent: 24"W x 36"H x 2ops



**PLAN DETAIL**

AVANT ENVIRONMENTAL INTL INC. Sales Department

95 Cypress Drive

Youngsville, NC 27396

(919) 570-2882

Info@avantenvironmental.com

Item No.	Date	Name	Part Number	Title	Scale	Drawing Number
001	2011-08-31	see	SDC-15-16	Large Cartridge Collector	1 = 1	SV-1600-15-02
002	2011-08-29					

The drawings, AIA/CES, 3-0 credits, and specifications are the property of Avant Environmental Int'l, Inc. (AVI) and may not be reproduced, distributed, modified, or otherwise used, except provided herein, without the express written permission of AVI.

人風口已开-高压加速液板  
 \*\*\* pulse control box run off of 120V, 1-phase, no transformer  
 inside pulse box. 不需要变压器。