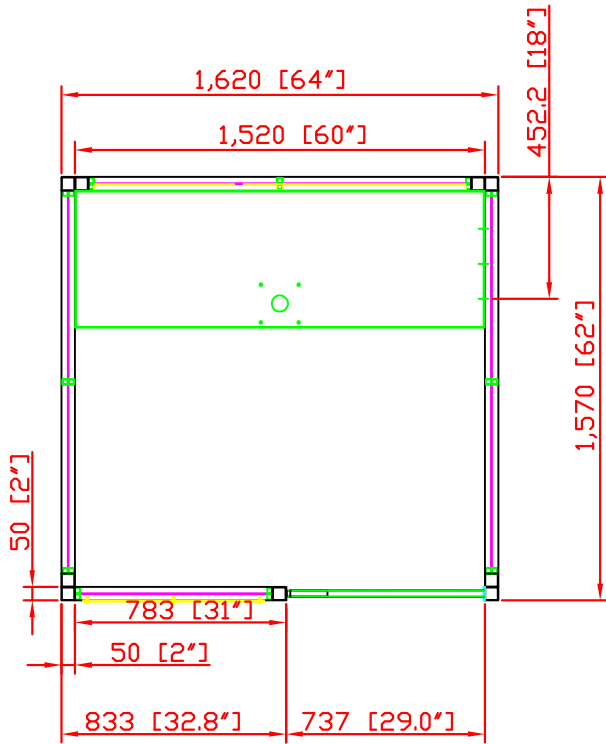




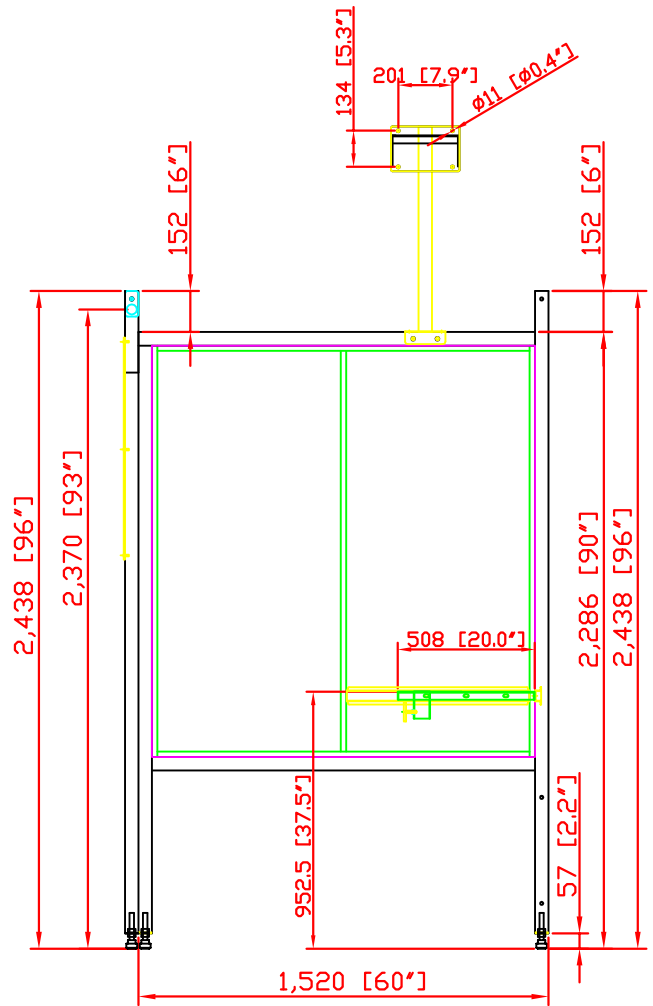
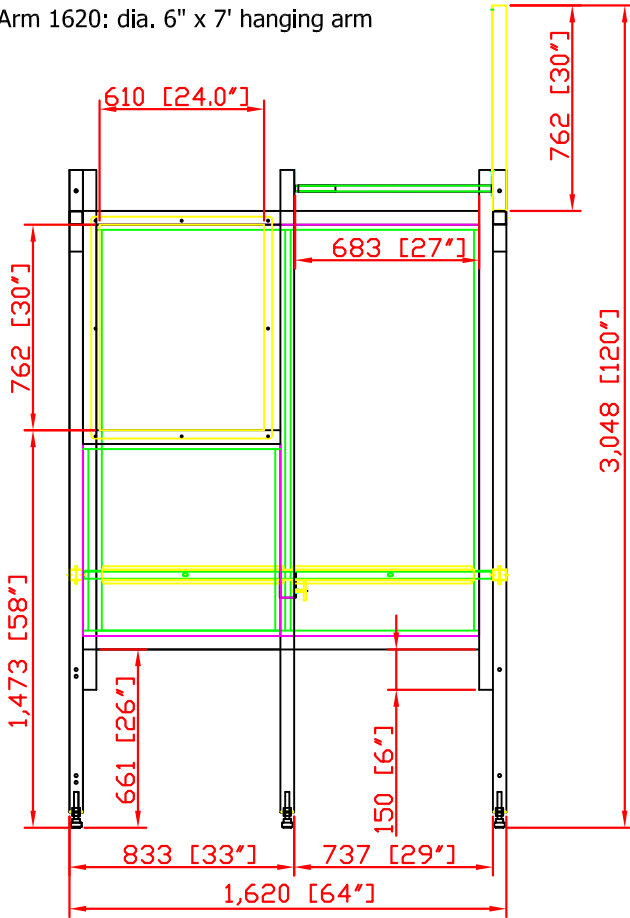
Revisions			
Rev	Description	Date	Approved



WB-1055 WELDING BOOTH SPECIFICATIONS

- Dimensions: 5' x 5' x 7.5' H
- Frame Steel: 2-Inch Square Tube with 1-Inch Square Tube Center Supports; 11-Gauge
- Panel Steel: 12-Gauge
- Rear Shelf: 60" L x 18" D; Fixed; 11-Gauge with 1.5-Inch Square Tube Frame
- Fume Arm Stanchion: 2-Inch Square Tube, 11-Gauge
- Finish: Powder Coat; Color: Blue
- Curtain Rod Assembly
- Optional Items: 1-Ply Vinyl Curtain, Strip Curtain Package, Adjustable Shelf, Fume Arm Stanchion (2-Foot Long, 11-Gauge), Fume Arm

Arm 1620: dia. 6" x 7' hanging arm



AVANI ENVIRONMENTAL INTL. INC. Sales Department
 95 Cypress Drive (919) 570-2862
 Youngsville, NC 27596 info@avanienvironmental.com

Date	Name
2014-11-18	***
2015-01-22	***

The drawings, AutoCAD, 3-D Models, and specifications are the property of Avani Environmental Intl. Inc. (AE) and may not be reproduced, distributed, modified, or otherwise used, except provided herein, without the express written permission of AE.

Booth WB-1055	
Size A	Scale 1 = 25
Drawing Number: WB-5x5S	