



REPRESENTED BY:

TODD AIR SOLUTIONS
101 E FISHER ST, 3rd FLOOR
SALISBURY NC 28144
Phone: 704 630-1101
Fax: 704 630-0528

DRAWING SUBMITTAL

CUSTOMER:

AVANI ENVIRONMENTAL
PO BOX 1279
YOUNGSVILLE, NC 27596

DATE: 3/21/2013

ATTENTION: Mr. Ken Haga

P.O. # 5856

CFV # 1303220

REPRESENTATIVE ORDER # CFQ# 224998

x REFERENCE APPROVAL CORRECTION

Table with 2 columns: DRAWING NO. and DESCRIPTION. Rows include SPECIFICATION SHEET, MODEL HDBI-360, DISCHARGE FLANGE, INLET FLANGE, and DISCHARGE DAMPER.

REMARKS: 2D CAD ATTACHED

## SPECIFICATION SHEET

CFV NO. <b>1303220</b>	CUSTOMER ID NUMBER <b>3566220</b>	PAGE <b>1</b>		SCHEDULED SHIP DATE <b>4/10/13</b>
S O L D	AVANI ENVIRONMENTAL PO BOX 1279 YOUNGSVILLE, NC 27596		CUSTOMER P.O. NUMBER <b>5856</b>	BUYER <b>Mr. Ken Haga</b>
			REPRESENTATIVE <b>TODD AIR SOLUTIONS</b>	REP. ORDER NO. <b>CFQ# 224998</b>
T O				

**MARKS**

**5856**

QTY.	DESCRIPTION	MODEL	ROT	DISCH	ARR	WHEEL/PROP	INLET		
<b>1</b>	<b>HEAVY DUTY BI BLOWER</b>	<b>HDBI -360</b>	<b>CCW</b>	<b>BAU</b>	<b>4</b>	<b>HDBI 65%</b>			
MOTOR DATA	HP	RPM	PH	CYCLE	VOLTAGE	FRAME	ENCLOSURE	SUPPLIED BY	INSTALLED BY
	<b>60</b>	<b>1750</b>	<b>3</b>	<b>60</b>	<b>190/380/50 &amp; 230/460/60</b>	<b>364T</b>	<b>TEFC</b>	<b>CFV</b>	<b>CFV</b>
	CFV MOTOR PART NUMBER <b>37740030I</b>						GROOVES	FXD/ADJ	BELT
FAN DATA	DENSITY	TEMP.	ALTITUDE	CFM	SP	RPM	BHP	MOTOR SHEAVE	BUSHING
AT OPERATING CONDITIONS	<b>.075</b>	<b>70 °F.</b>		<b>21375</b>	<b>12.000</b>	<b>1755</b>	<b>58.000</b>		
MOTOR VENDOR MODEL NUMBER	<b>0604SDSR41A-P</b>						FAN SHEAVE	BUSHING	

Record Print, 2D CAD Drawings

**Complete Motor Description:**

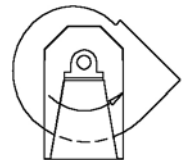
MTR, 60 HP, 1425/1750 RPM, 3PH, 50/60Hz, 190/380/50 & 230/460/60, TEFC, Prem Eff, FM, 364T, IP54, 1.15 SF, F Insul., 40°C Amb., F1 Box, Cast Iron Frame, EQP Global SD Series, Toshiba

Maximum allowable wheel speed at 70°F is 1950 RPM

Estimated Shipping Weight: 2650 pounds

- CLASS II/III/IV WHEEL CONSTRUCTION
- PAINT DAMPER WITH SAME SPECIAL COATING AS FAN
- MANUAL CONTROLLED OPPOSED BLADE DISCHARGE DAMPER
- DRILL DISCHARGE FLANGE STANDARD
- DRILL INLET FLANGE STANDARD BOLT CIRCLE ON-CENTERS
- BOLTED INSPECTION DOOR AT 9 O'CLOCK
- DRAIN
- TEFLON SHAFT SEAL
- FAN PAINTED AVANI BLUE

Submittal Email: [cbendksby@avanienvironmental.com](mailto:cbendksby@avanienvironmental.com)

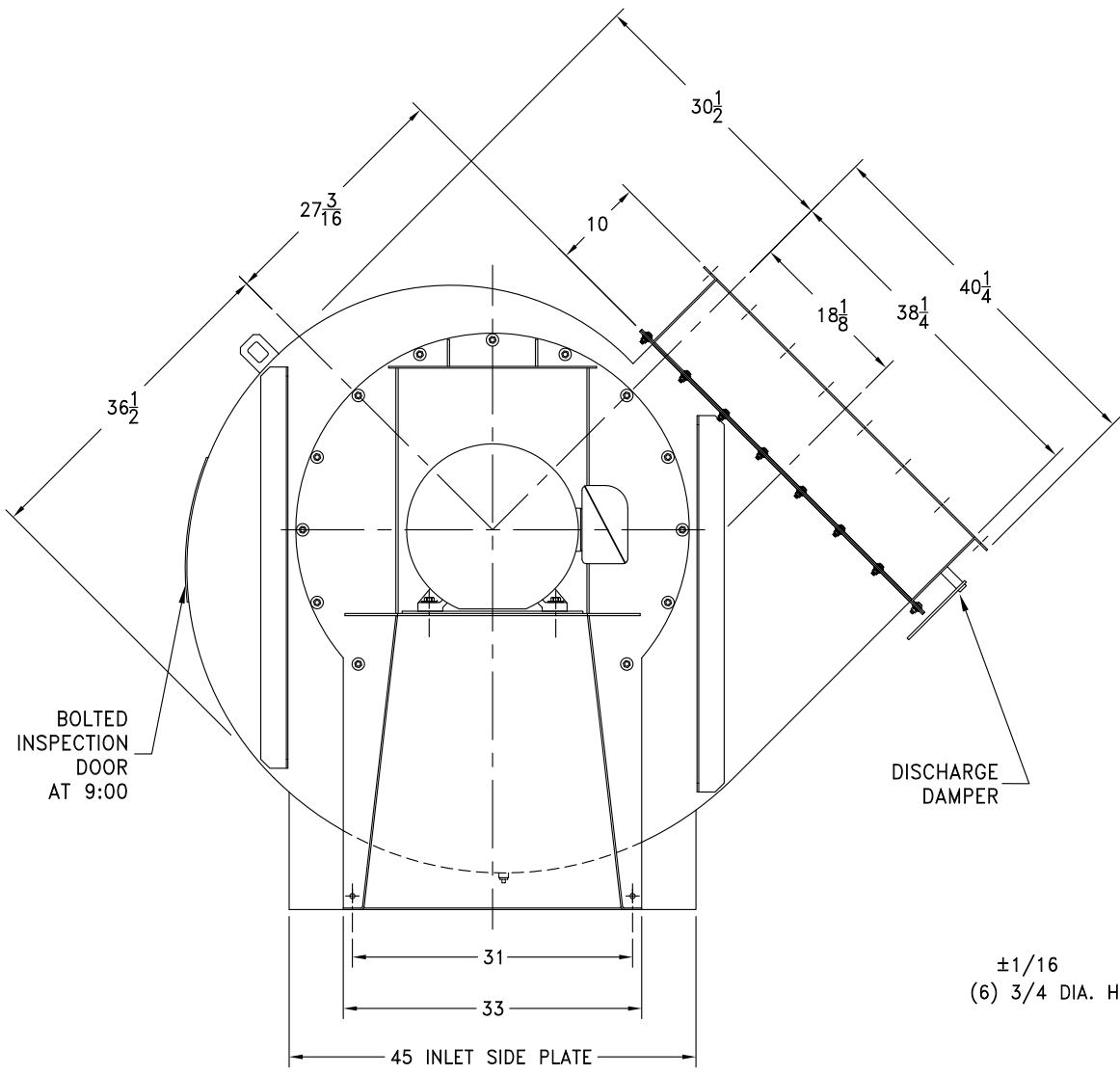


CCW BAU

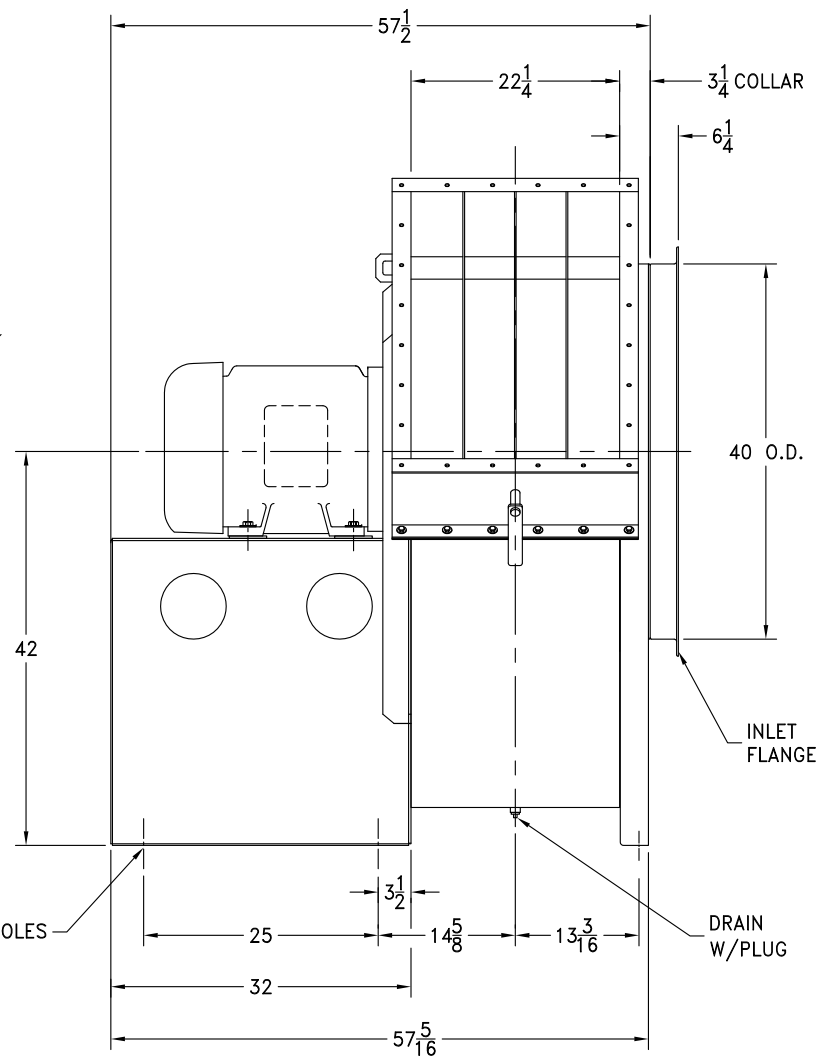
DR. BY \_\_\_\_\_ DCF \_\_\_\_\_

DATE: 3/21/2013

CERTIFIED



CCW BOTTOM ANGLED UP DISCHARGE SHOWN



±1/16  
(6) 3/4 DIA. HOLES

- NOTES
1. MOTOR: 60 HP, 1750 RPM, 364T FRAME, TEFC SHOWN.
  2. FOR INLET FLANGE SEE DWG. A27205.
  3. FOR DISCHARGE FLANGE SEE DWG. A27454.
  4. FOR DISCHARGE DAMPER DEE DWG. A17110-360
  5. CLASS II/III/IV WHEEL CONSTRUCTION.
  6. TEFLON SHAFT SEAL.

NO.	DESCRIPTION	DATE	INITIALS
	REVISIONS		

SUPERSEDES:	
SIMILAR TO:	
CERTIFIED	

TOLERANCES:  
 FRACTIONS ± 1/8  
 ANGLES: ± 1°  
 DECIMALS: X.XXX = ±0.005  
 X.XX = ±0.060  
 X.X = ±0.120  
 ALL DIMENSIONS IN INCHES UNLESS OTHERWISE SPECIFIED

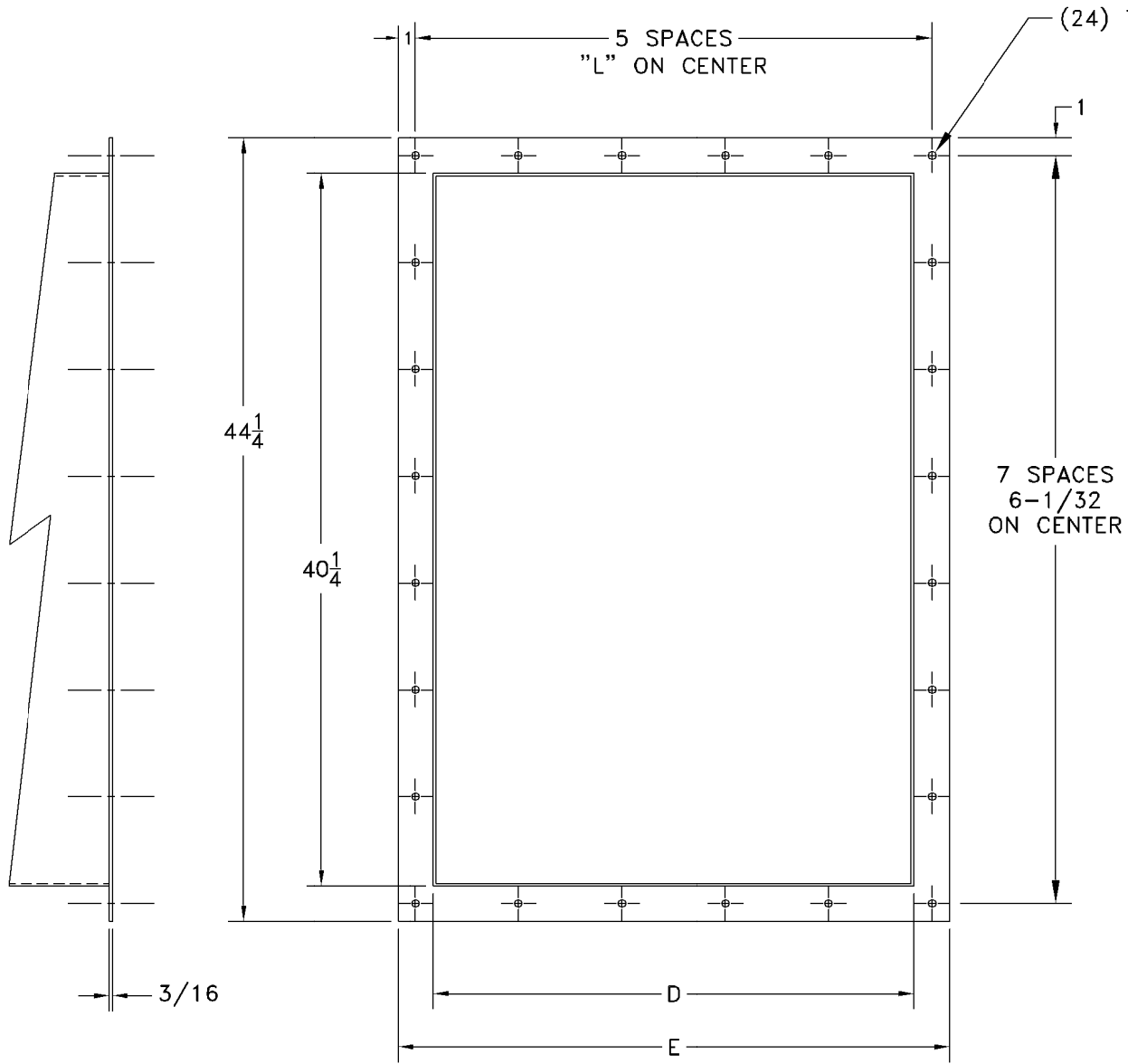
SCALE: FULL IN CAD  
 DATE: 03/20/13  
 DR. BY: DCF  
 CHK. BY:

**cincinnati fan**  
 7697 SNIDER ROAD MASON, OHIO 45040

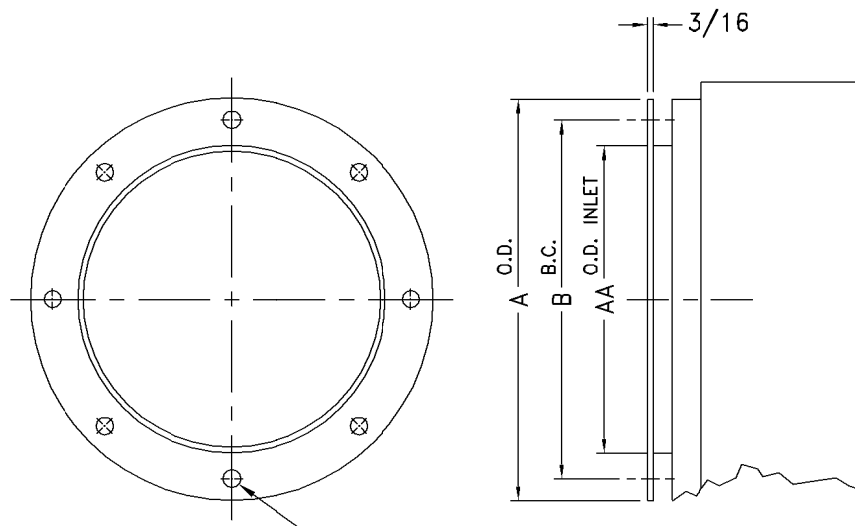
TITLE: HD BI-360 ARR. 4 65% REDUCED WIDTH (CCW BAU) W/ DISCHARGE DAMPER FOR AVANI ENVIRONMENTAL

DRAWING NO. **A** 1303220

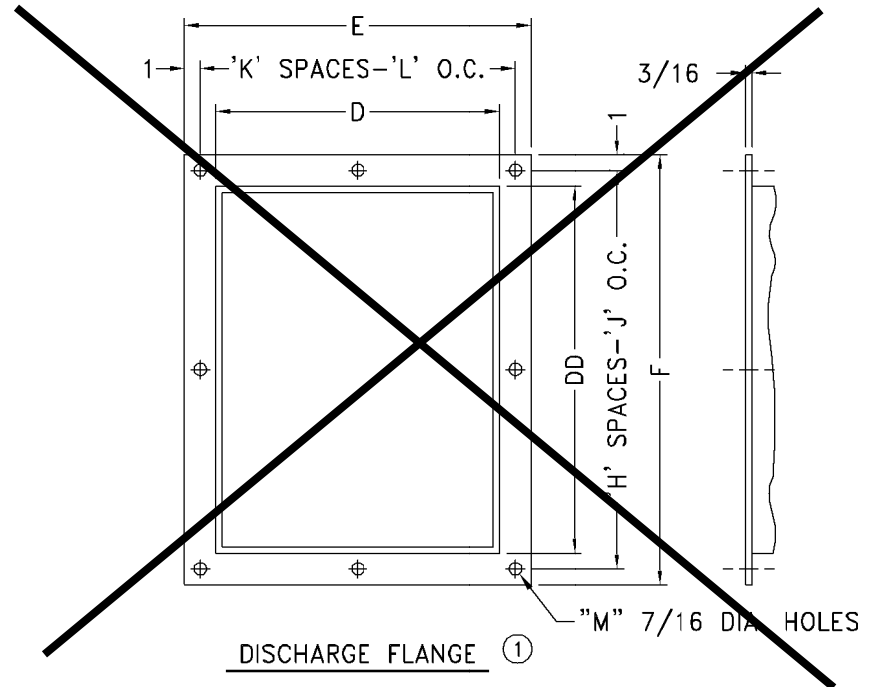
SHEET 1 of 1 REV. 1



% WIDTH	"D"	"E"	"L"
100	27-1/4	31-1/4	5-27/32
95	26-9/16	30-9/16	5-23/32
90	25-13/16	29-13/16	5-9/16
85	25-1/8	29-1/8	5-7/16
80	24-3/8	28-3/8	5-9/32
75	23-11/16	27-11/16	5-1/8
70	22-15/16	26-15/16	5
<del>65</del>	22-1/4	26-1/4	4-27/32
60	21-1/2	25-1/2	4-11/16
55	20-13/16	24-13/16	4-9/16
50	20-1/8	24-1/16	4-13/32



INLET FLANGE  
"N" HOLES, "P" DIA.



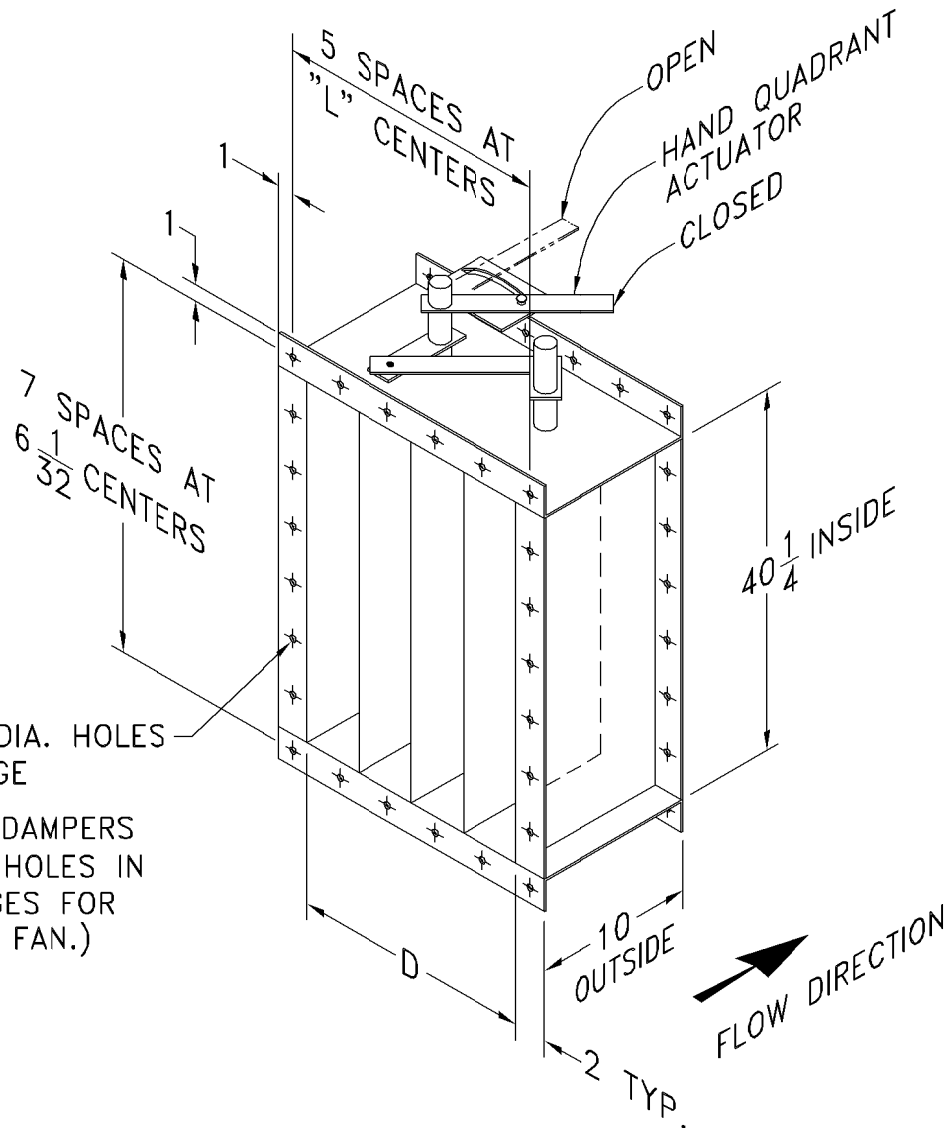
DISCHARGE FLANGE ①  
"M" 7/16 DIA. HOLES

INLET					
SIZE	A O.D.	B B.C.	N	AA DIA.	P
120	16	14-3/8	8	13-1/4	7/16
130	17-3/4	15-15/16	8	14-5/8	7/16
150	19-1/4	17-1/2	8	16-1/8	7/16
160	21-1/8	19-3/8	8	18	7/16
180	23-1/2	21-1/2	12	20	7/16
200	25-1/2	23-1/2	12	22	7/16
220	28-1/8	26-1/8	12	24-5/8	7/16
240	30-3/4	28-3/4	16	27	7/16
270	33-3/4	31-5/8	16	30	7/16
300	37-1/4	35-1/4	16	33-1/2	7/16
330	40-3/8	38-3/4	16	36-3/4	1/2
360	43-5/8	42	16	40	1/2

DISCHARGE								
D	E	F	H	J	K	L	M	DD
9-3/8	13-3/8	17-11/16	2	7-27/32	2	5-11/16	8	13-3/4
10-3/8	14-3/8	19-3/16	2	8-19/32	2	6-5/16	8	15-1/4
11-3/8	15-3/8	20-3/4	3	6-1/4	2	6-11/16	10	16-13/16
12-1/2	16-1/2	22-7/16	3	6-13/16	2	7-1/4	10	18-7/16
13-7/8	17-7/8	24-1/2	3	7-1/2	2	7-15/16	10	20-3/8
15-1/4	19-1/4	26-3/8	3	8-1/8	3	5-3/4	12	22-3/8
16-7/8	20-15/16	28-7/8	4	6-23/32	3	6-5/16	14	24-7/8
18-9/16	22-5/8	31-3/8	4	7-11/32	3	6-7/8	14	27-3/8
20-7/16	24-1/2	34-1/8	4	8-1/32	3	7-1/2	14	30-1/16
22-3/4	26-3/4	37-5/8	5	7-1/8	3	8-1/4	16	33-9/16
24-7/8	28-7/8	40-7/8	7	5-9/16	5	5-3/8	24	36-3/4
27-1/4	31-1/4	44-1/4	7	6-1/32	5	5-27/32	24	40-1/4

NOTE:

① NOT AVAILABLE ON ANY MODEL FOR DOWNBLAST, BOTTOM ANGULAR DOWN OR TOP ANGULAR DOWN DISCHARGE POSITIONS.  
DISCHARGE FLANGE IS STANDARD ON SIZES -270 THRU -360.



(24) 7/16 DIA. HOLES EACH FLANGE

(STANDARD DAMPERS HAVE BOLT HOLES IN BOTH FLANGES FOR BOLTING TO FAN.)

	% WIDTH	D	L
	100	27-1/4	5-27/32
	95	26-9/16	5-23/32
	90	25-13/16	5-9/16
	85	25-1/8	5-7/16
	80	24-3/8	5-9/32
	75	23-11/16	5-1/8
	70	22-15/16	5
X	65	22-1/4	4-27/32
	60	21-1/2	4-11/16
	55	20-13/16	4-9/16
	50	20-1/8	4-13/32

NOTES:

1. OPPOSED BLADE IS STANDARD. □ PARALLEL BLADE IS OPTIONAL.
2. DAMPER BLADES WILL BE PERPENDICULAR TO FAN SHAFT.
3. STANDARD MATERIAL IS CARBON STEEL WITH RUST INHIBITING PRIMER. □ OPTIONAL MATERIAL \_\_\_\_\_.
4. STANDARD CONSTRUCTION MAX. TEMPERATURE: 300° F.  
□ OPTIONAL HIGH TEMPERATURE CONSTRUCTION MAX. TEMPERATURE: 800° F.

