



Date: Janaury 08, 2014

Project:

To: Wolf-tec, Inc.

Attn: Jeff Melvin

Recommended Equipment:

Grinding Booth: 25' x 18' x 12'

Avani Environmental Intl. Inc.
95 Cypress Drive
Youngsville, NC 27596
www.avanienvironmental.com

Phone: (919) 570-2862
Fax: (919) 570-2863
Email: info@avanienvironmental.com
www.weldingbooths.com

The drawings, AutoCAD, 3-D Models, and specifications are the property of Avani Environmental Intl. Inc. (AE) and may not be reproduced, distributed, modified, or otherwise used, except provided herein, without the express written permission of AE.

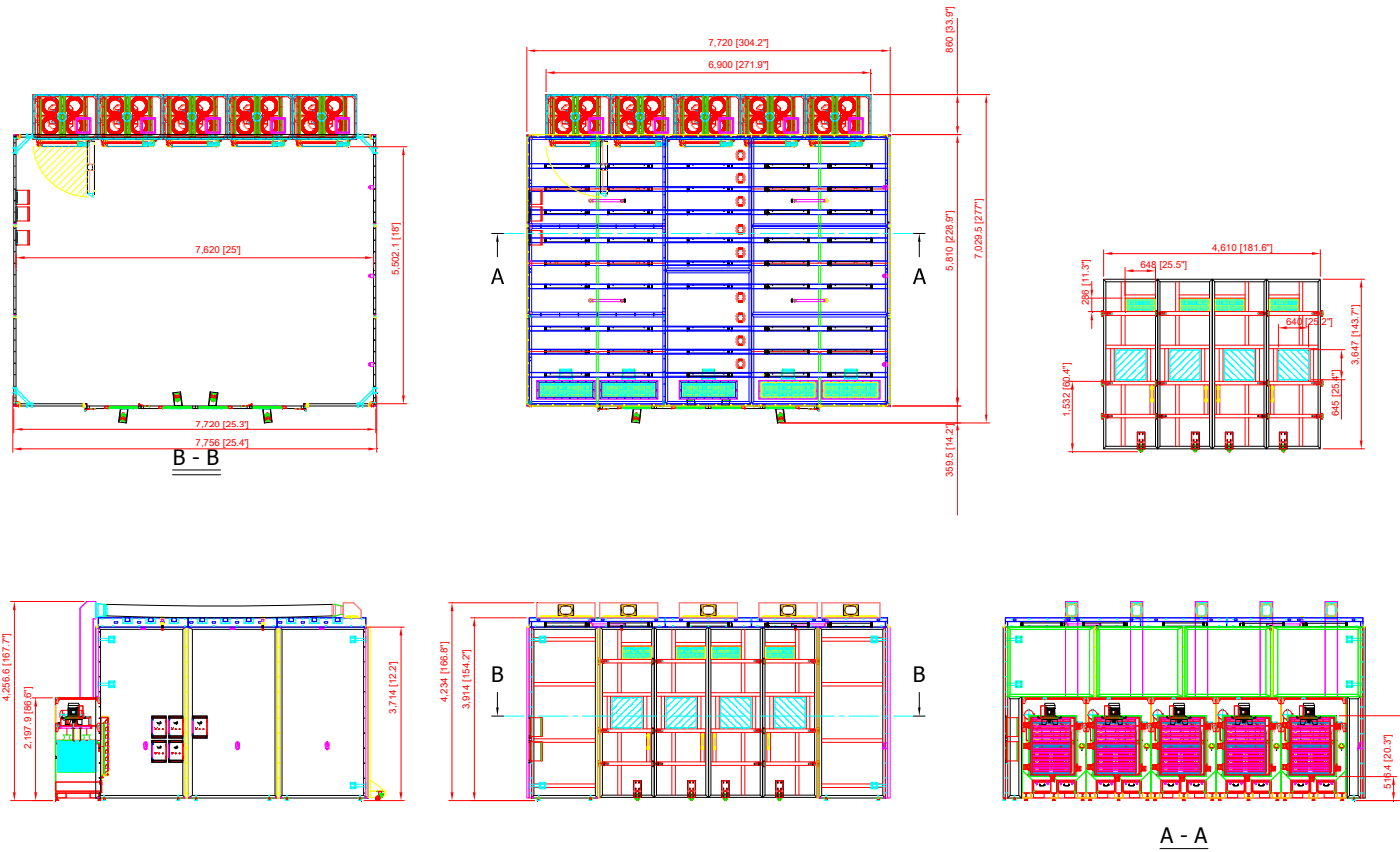
DO NOT SCALE

IF IN DOUBT ASK



Revisions

Rev	Description	Date	Approved
-----	-------------	------	----------



AVANI ENVIRONMENTAL INTL. INC. Sales Department
 95 Cypress Drive
 Youngsville, NC 27596

(919) 570-2862
 info@avanienvironmental.com

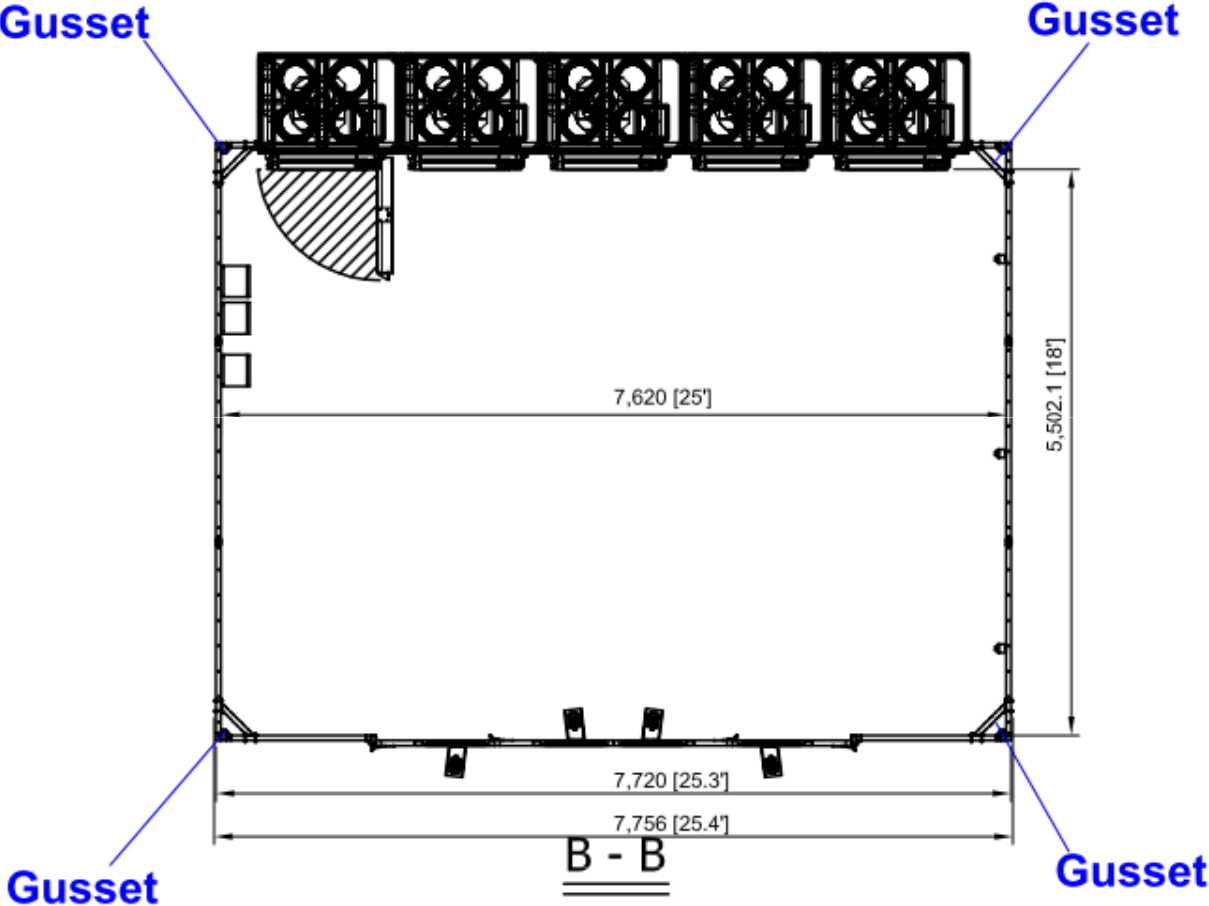
Date	Name	Part Number:
2014-01-08	Workroom	**
Drawn by:	Checked by:	

The drawings, AutoCAD, 3-D Models, and specifications are the property of Avani Environmental Intl. Inc. (AE) and may not be reproduced, distributed, modified, or otherwise used, except provided herein, without the express written permission of AE.

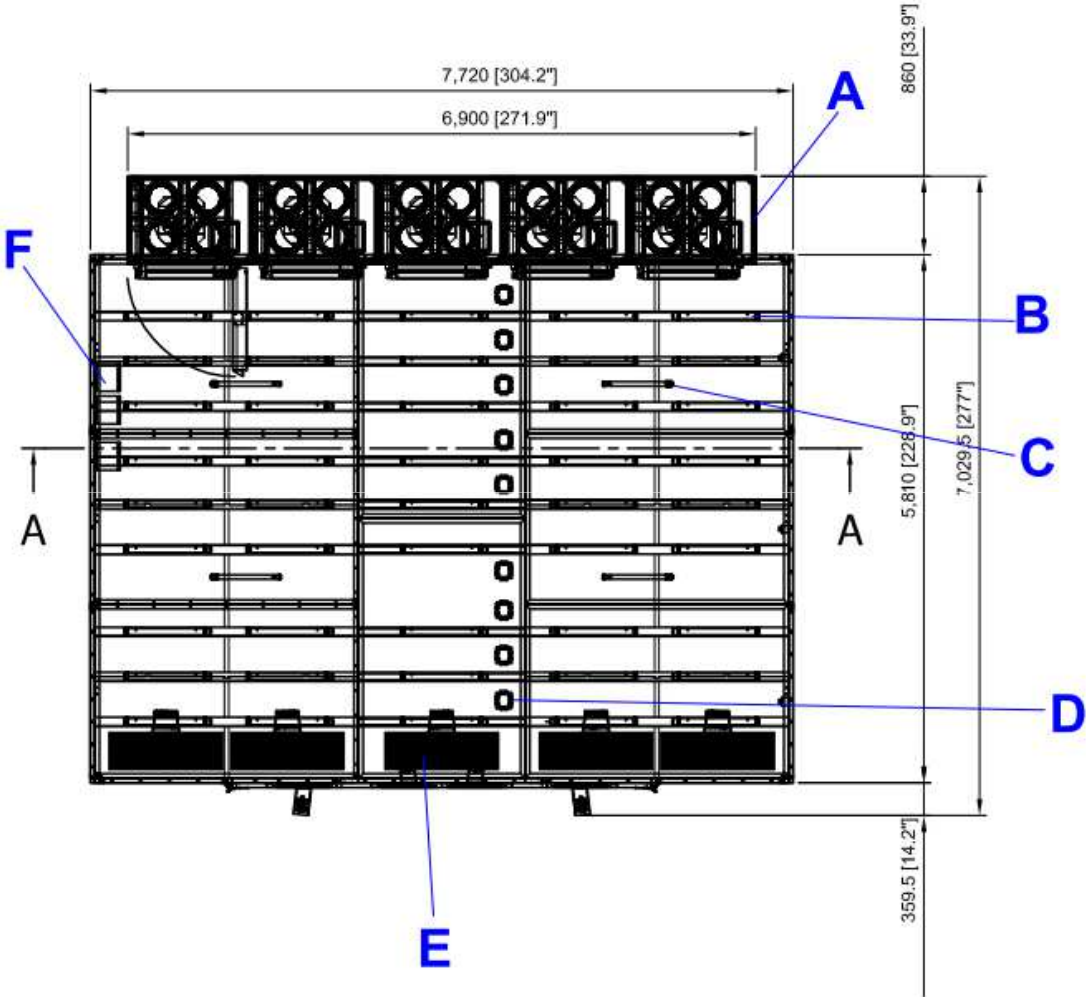
Title:
Environmental Booth 25' x 18' x 12'

Size	Scale	Drawing Number:
A	1 = 25	EB-12-14-8.7

Top view without Roof

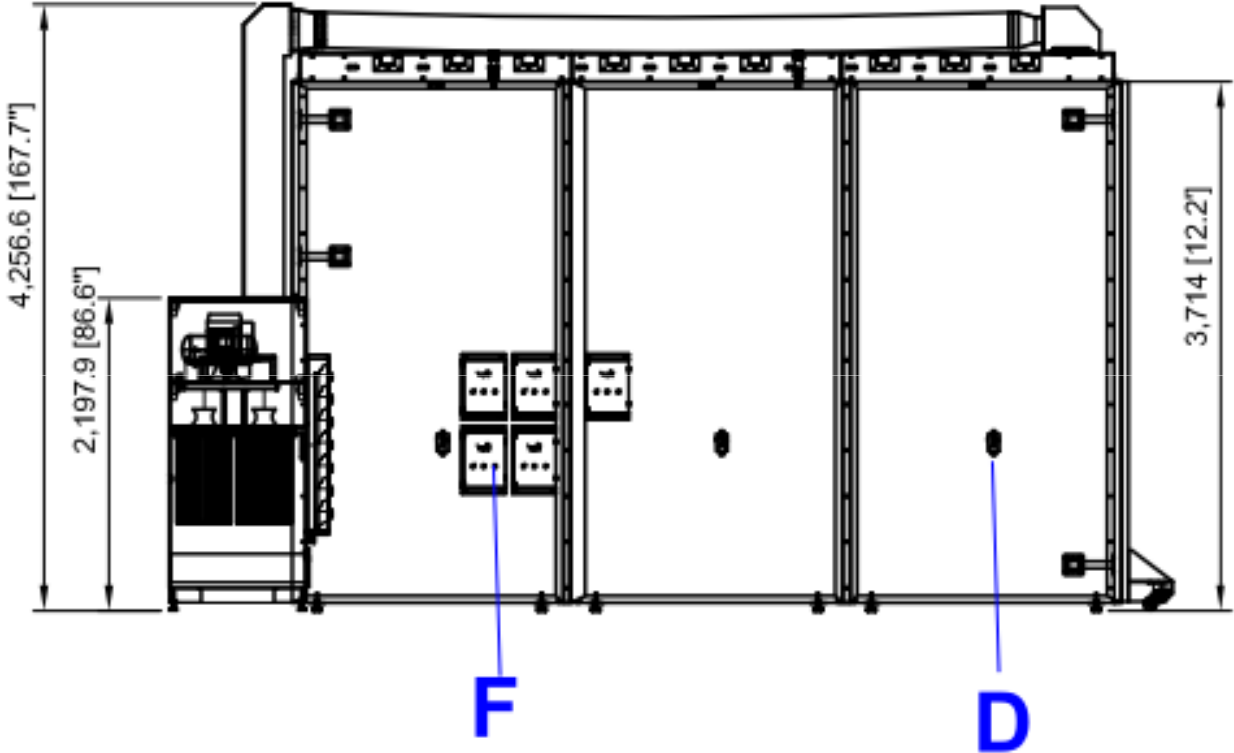


Top view with Roof



- A – EB-L-5-4 collector (5)
- B – Working light (45) (quoted 29)
- C – Fire sprinkler (4)
- D – Light switch (9)
- E – Adjustable louver (5)
- F – Control panel for collectors (5)

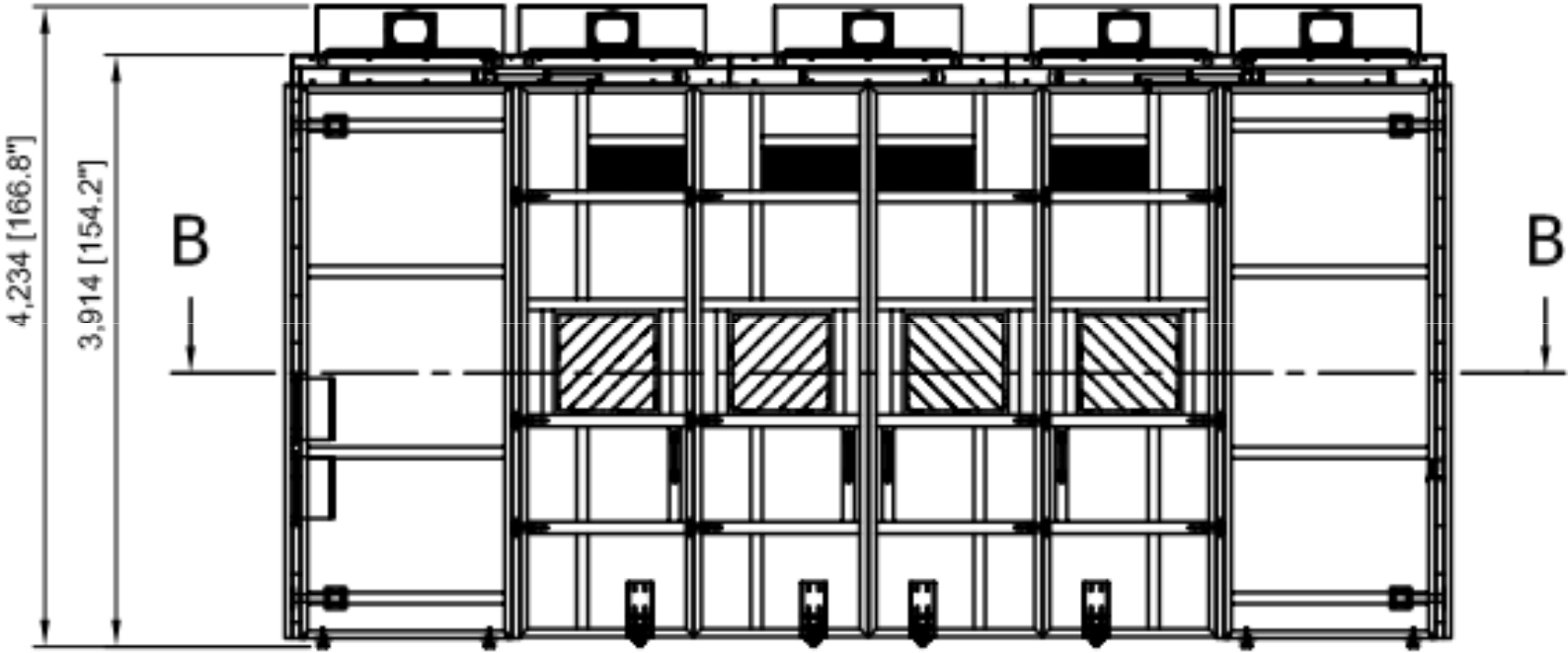
Side view (left hand side)



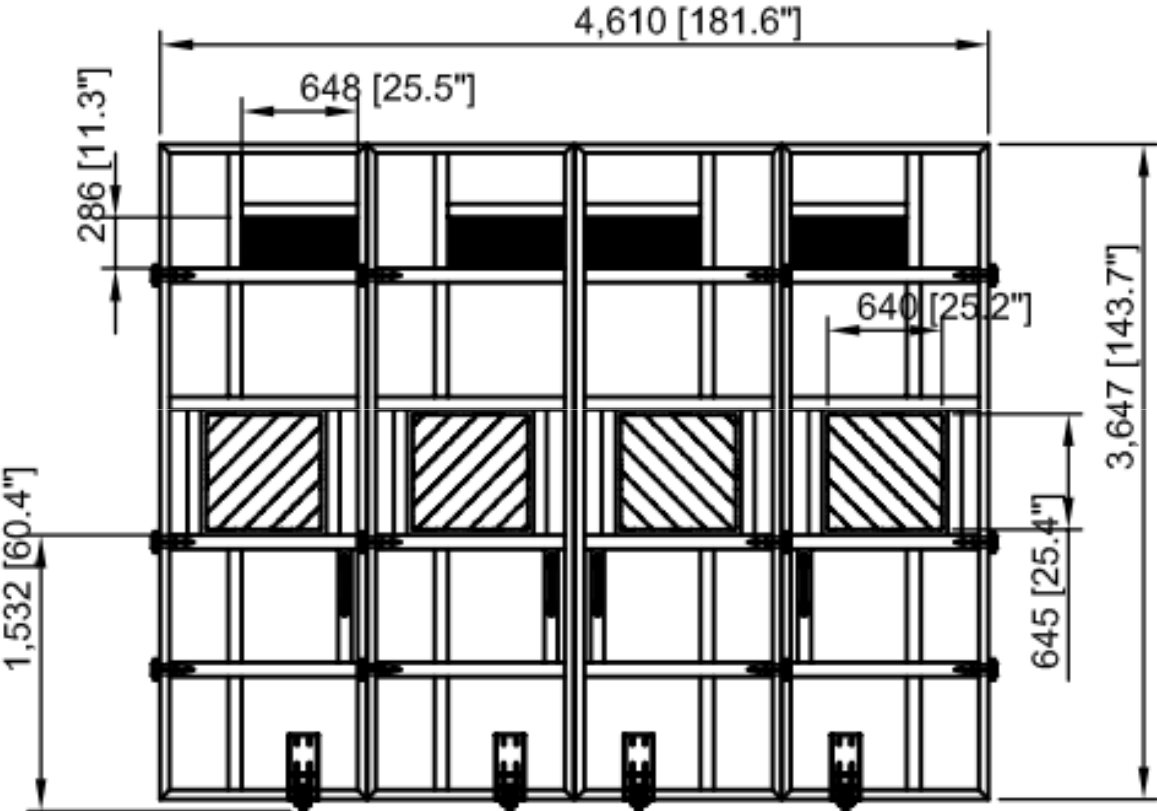
D – Light switch (9)

F – Control panel for collectors (5)

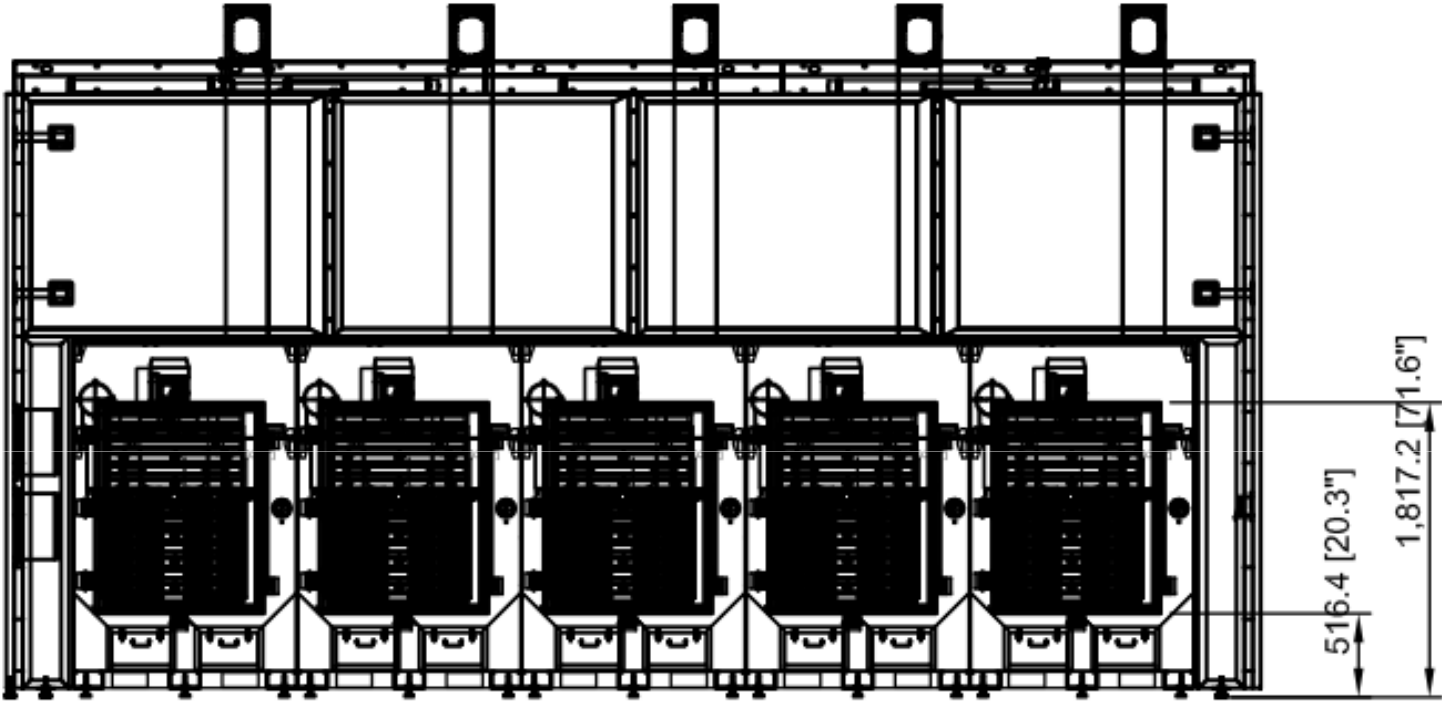
Side view (right hand side)



Front door only



Front view without front door



A - A