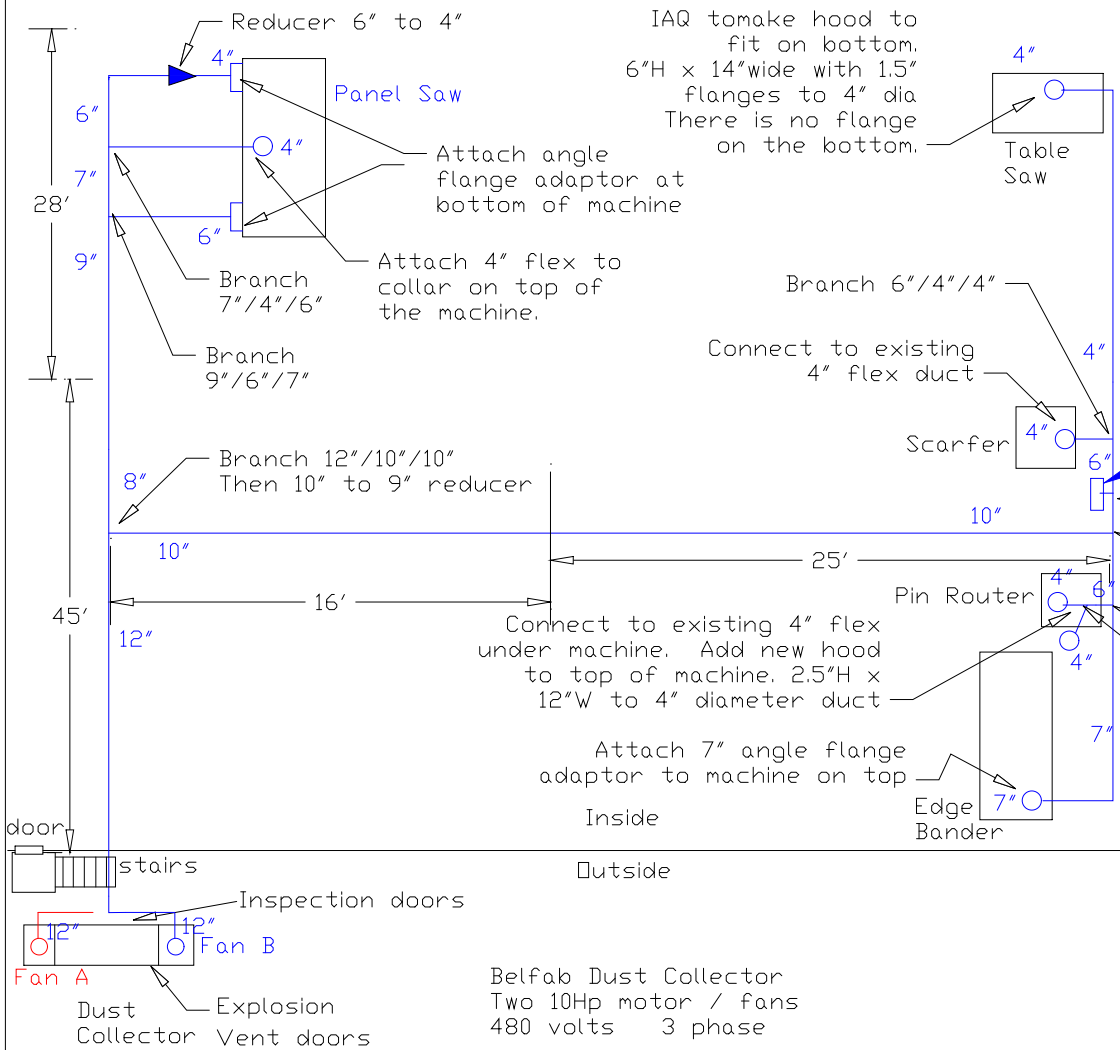


Plan View Ductwork Layout for Fan B



IAQ tomake hood to fit on bottom. 6"H x 14"wide with 1.5" flanges to 4" dia There is no flange on the bottom.

Notes:
A) Bottom of ductwork off of floor is 10' 6"
B) The Router and Blow off hoods will have an automatic blastgate so one will be open while the other is closed.
C) All other machines will have a manual blastgate for air flow adjustment.

Industrial Air Quality	
102 AG DRIVE	
Youngsville, NC 27596	
P# 919-562-7181 F# 919-562-7182	
Project: WINCO	
Drawing: Ductwork layout	
Date: 9/15/08	Drawn by: RAV
Revision: 9/30/08 Rev 6	

