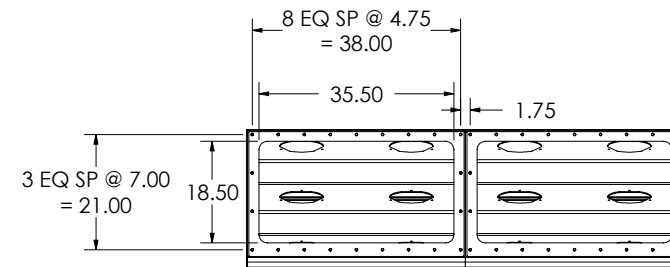
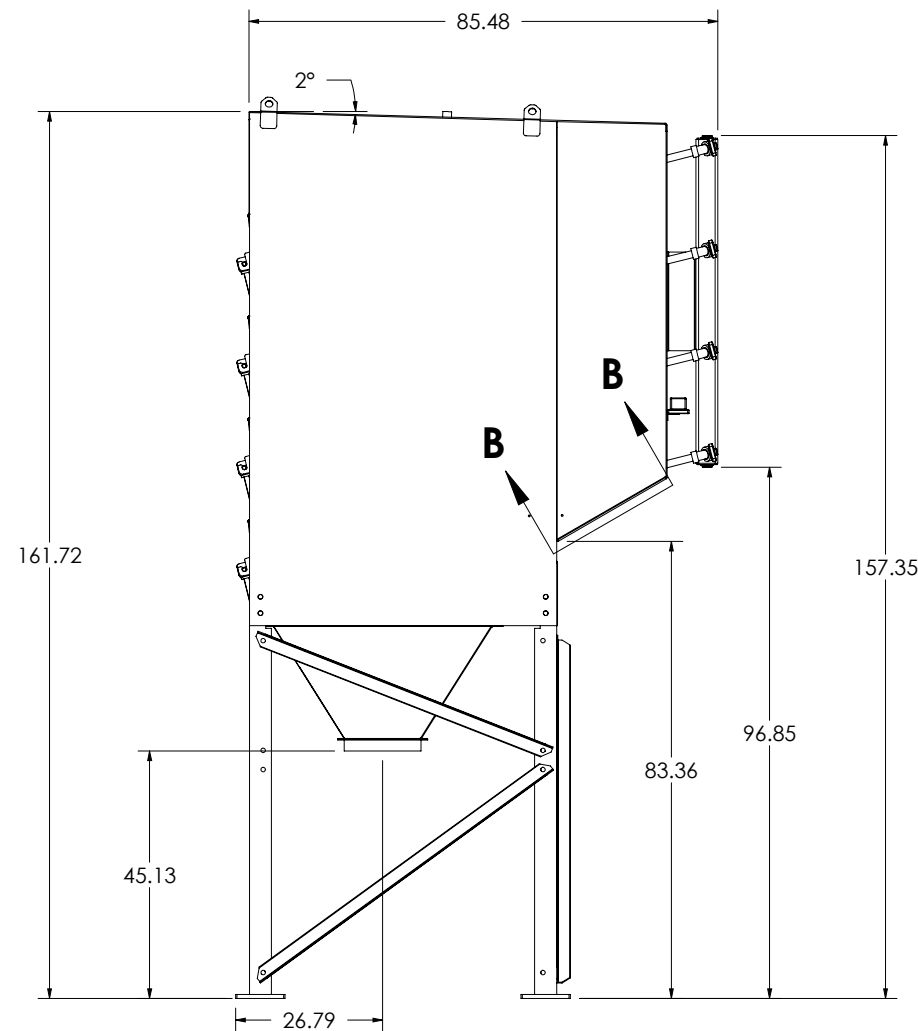
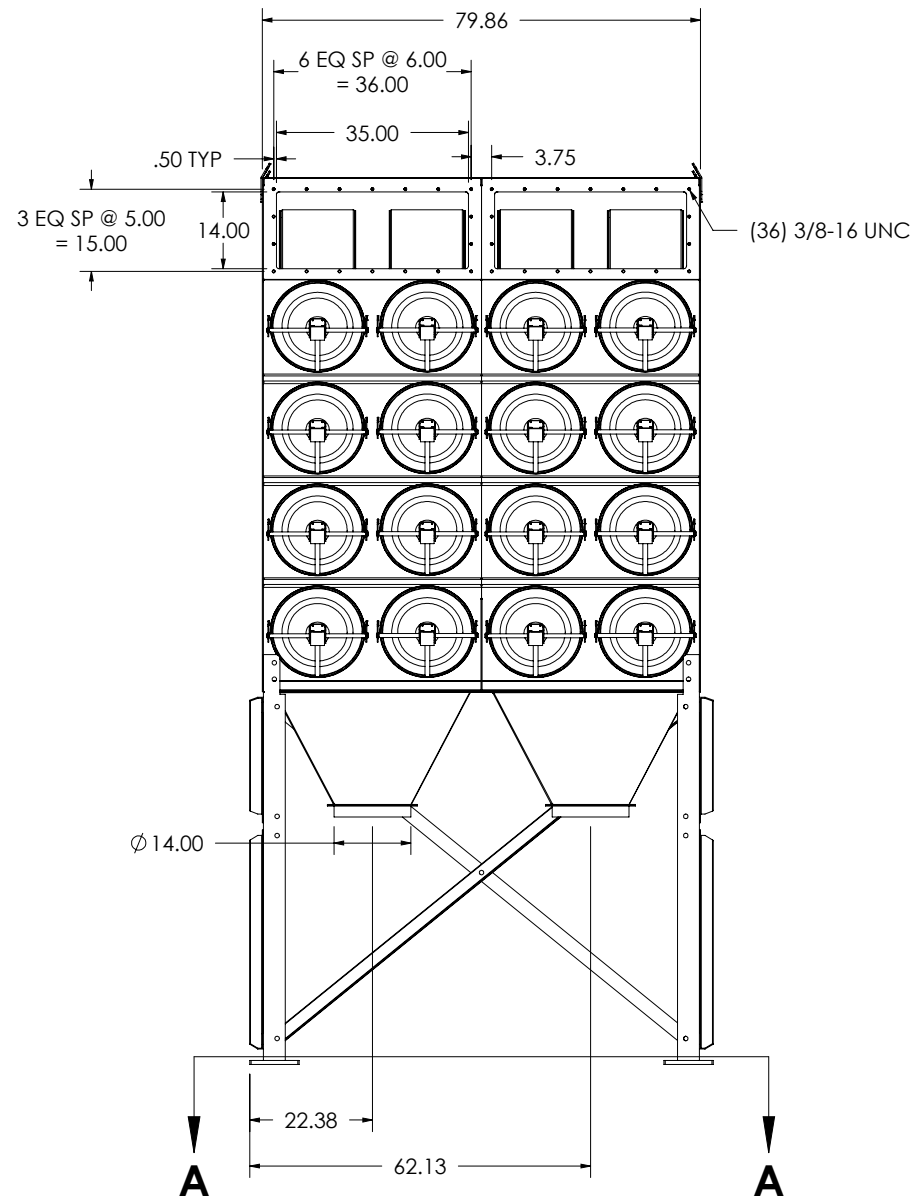
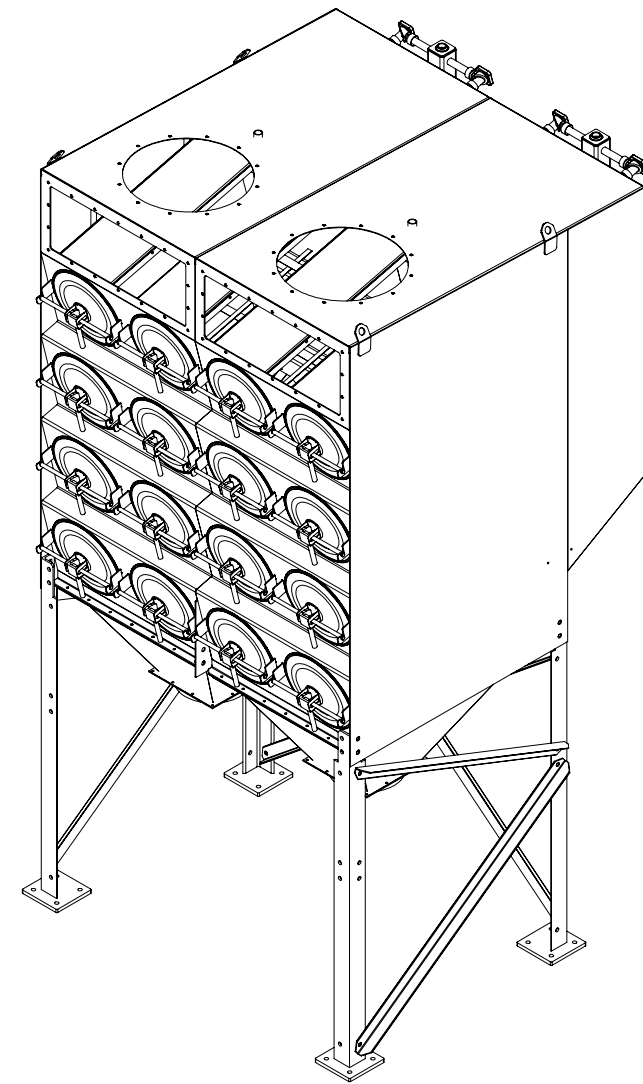


SECTION A-A




SECTION B-B



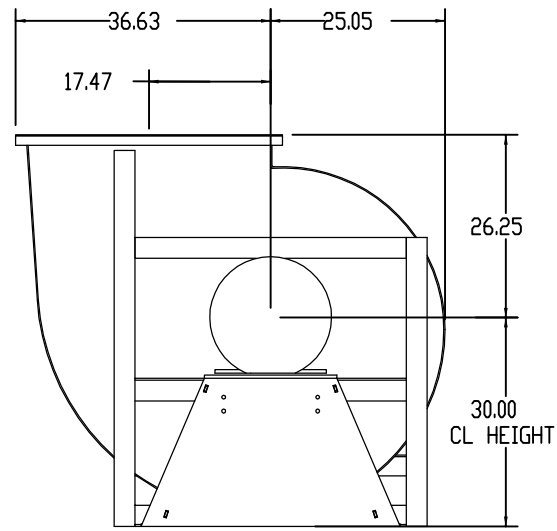
ACCESSORIES

1. FLAME RETARDANT FILTERS
2. DRUM LID LATCH RINGS
3. SPRINKLER COUPLER
4. ALL-IN-ONE CONTROLS (460 V)

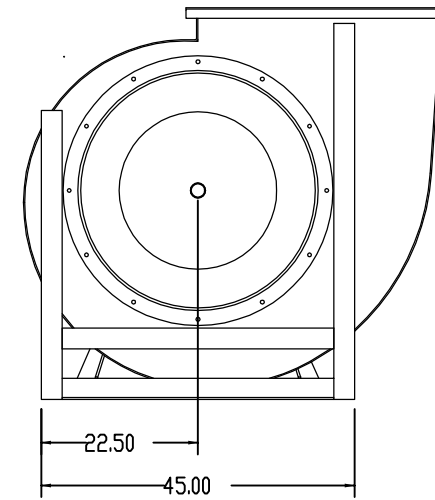
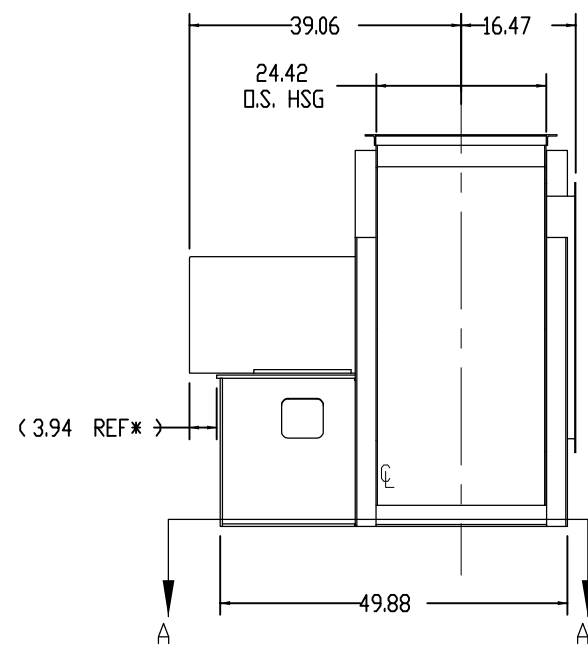
THE INFORMATION SHOWN ON THIS DRAWING IS THE EXCLUSIVE PROPERTY OF AIR CLEANING TECHNOLOGY, INC. IT IS NOT TO BE USED FOR ANY PURPOSE OR ITS CONTENTS DISCLOSED WITHOUT OUR WRITTEN CONSENT.

REV	ECN	DATE	BY	CHK	DESCRIPTION
-	-	-	-	-	-
 Air Cleaning Technology, Inc. <small>13310 Industrial Park Blvd, Suite 195 - Plymouth, MN 55441</small>					
TITLE ACT 4-32					
DRAWING NO. BC 15508		ROW 001	ITEM 00	SHEET 1 OF 1	REV. -

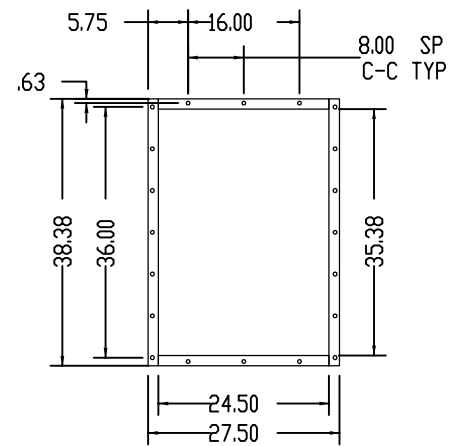
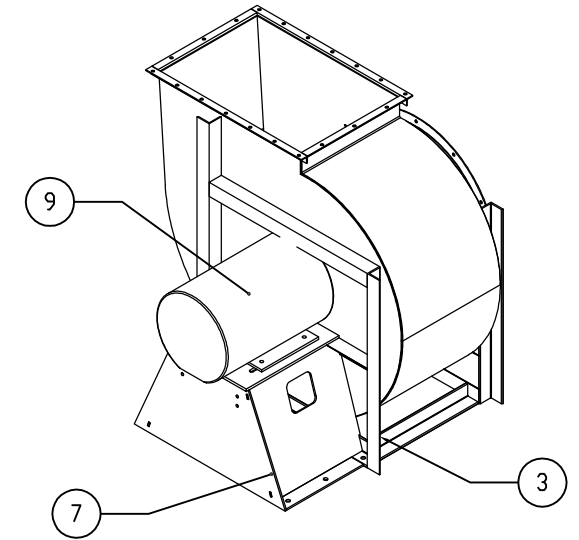
JOB AND LOCATION	CUSTOMER NAME	TEMP.	DRAWN BY
	JOB NAME	ELEVATION	DATE
	JOB ID	DENSITY	CHKD BY
	LOCATION	C.F.M.	DATE
	ENG/ARCH.	S.P.	MOTOR WT
	S.O. NUMBER	R.P.M.	FAN WT
	TAG UNIT	B.H.P.	SCALE



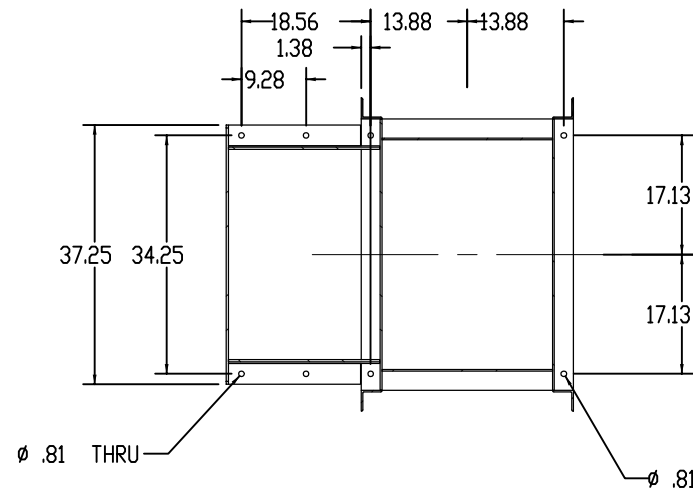
DRIVE SIDE VIEW



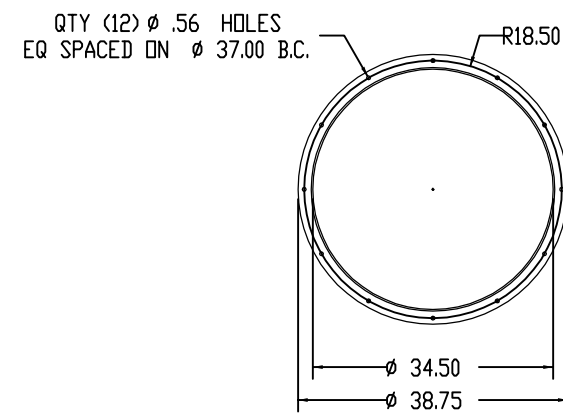
INLET SIDE VIEW



OUTLET FLANGE DETAIL



FOUNDATION PLAN - TOP VIEW SECTION A-A



INLET FLANGE DETAIL

ACCESSORIES

1. ACCESS DOOR- BOLTED
2. DRAIN W/ PLUG
3. DAMPER-OUTLET PARALLEL BLADE STD TYPE PER. 482221-001-04
4. SHAFT SEAL- STD TYPE
5. INLET MOUNTED FAN
6. MOUNT TCF MOTOR
7. SPCL PAINT-ENTIRE FANPAINT ENTIRE FAN AEROVENT GRAY
8. CRATE PER SHIPPING STD #3

* PLEASE NOTE THIS DIMENSION WILL VARY BY MOTOR MFG. ALL OTHER DIMENSIONS ARE BASED ON NEMA STD.
 * THE DESIGN SHOWN ON THIS DRAWING IS THE EXCLUSIVE PROPERTY OF TWIN CITY FAN COMPANIES, LTD. IT IS NOT TO BE USED FOR ANY PURPOSE OR ITS CONTENTS DISCLOSED WITHOUT OUR WRITTEN CONSENT.

JOB AND LOCATION	CUSTOMER NAME	AIR CLEANING TECHNOLOGIES
	JOB NAME	
	JOB ID	6994
	LOCATION	
	ENG/ARCH.	
	S.D. NUMBER	492221
	TAG UNIT	16000CFM@12"

PERFORMANCE " A "	TEMP.	70°F	DRAWN BY	PSHKINDER
	ELEVATION	0 FT	DATE	7/2/2013
	DENSITY	0.075	CHKD BY	AW
	CFM	16000	DATE	7/8/13
	SP.	12	MOTOR WT	750 LBS
	RPM	1750	FAN WT	1120
	B.H.P.	38.01		
	T.S.	15118		
D.V.	2741	SCALE	1:28	

WARNING MESSAGES

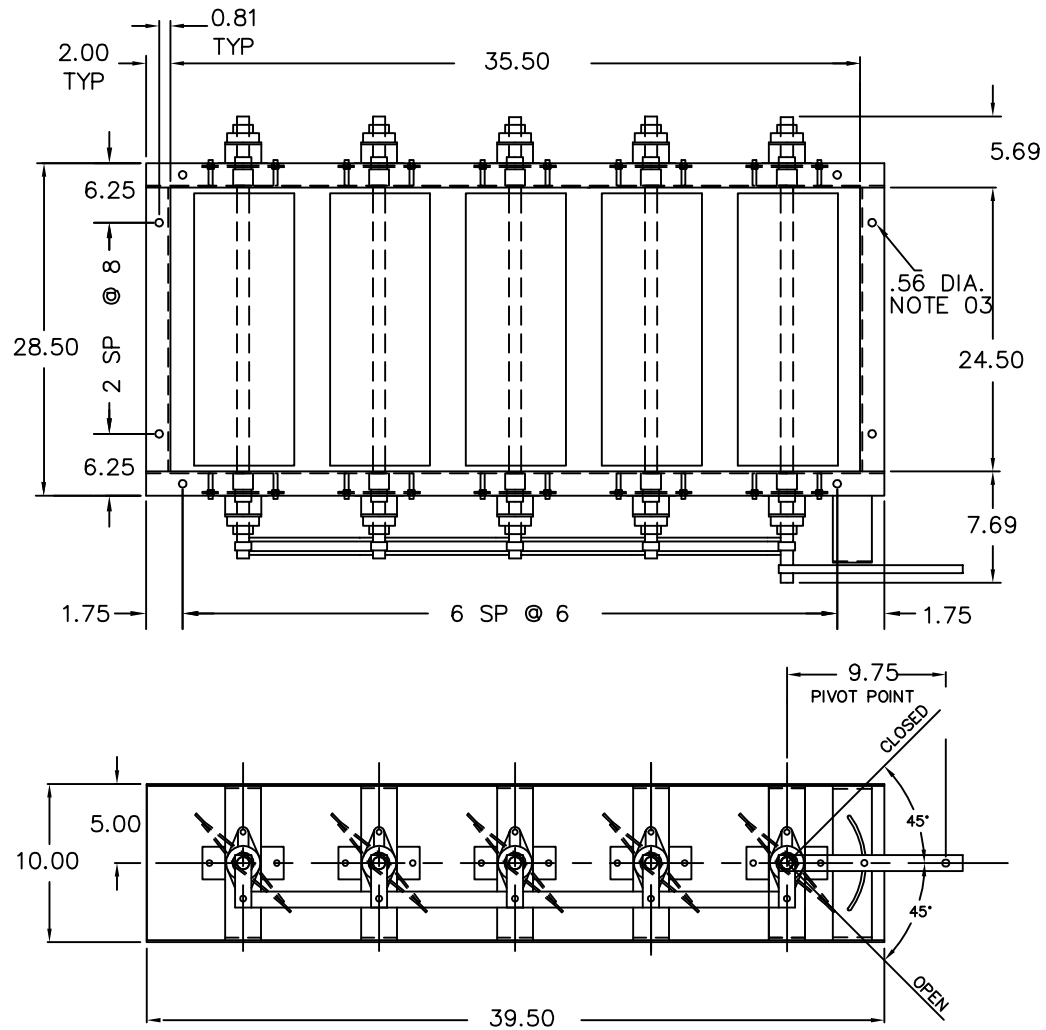
REV	ECN	DATE	BY	CHK	DESCRIPTION
-	-	-	-	-	

Twin City Fan Companies, Ltd.
 Aerovent | Fiber-Aire | TC Axial | TC Ventcol | Twin City Fan & Blower
 Member of Air Movement and Control Association
 5959 Trenton Lane - Minneapolis, MN 55442-3238

TITLE
 SIZE 330, BCS CLASS 17, CW ROT, UBD DISCH
 ARR-4, NON-ROTATABLE (80% WD.)

DRAWING NO.	ROW	ITEM	SHEET	REV.
BC 492221	001	00	1 OF 1	

ITEM DESCRIPTION	QTY	NOTES
9 MOTOR	1	40 HP, 1800 RPM, 324T TEFC FRAME SIZE FURN. & MTD. BY TCF
8 INLET FLANGE	1	7 GA THK FLANGE, PUNCHED
7 PEDESTAL	1	
6 OUTLET FLANGE	1	1.5' x 1.5' x .25' ANGLE, PUNCHED
5 INLET CONE	1	
4 WHEEL (NOT SHOWN)	1	
3 FRAME	1	3' x 3' x .25' BASE ANGLES
2 HOUSING SCROLL	1	7 GA.
1 HOUSING SIDE	2	7 GA.
BILL OF MATERIALS		



DRAWN BY
PS

DATE
7/2/13

CHKD BY
AW

DATE
7/2/13

PART NO.

MATERIAL

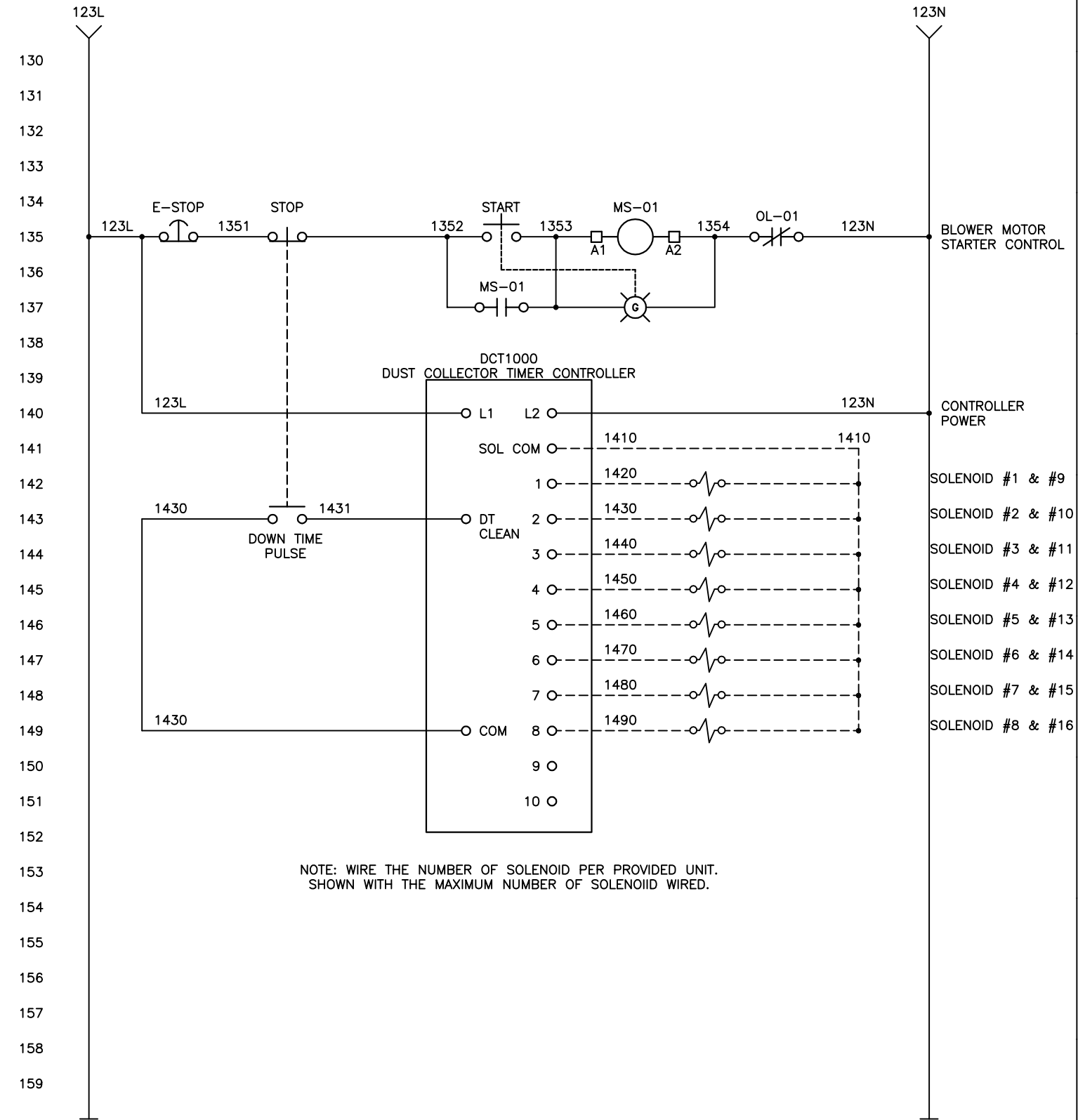
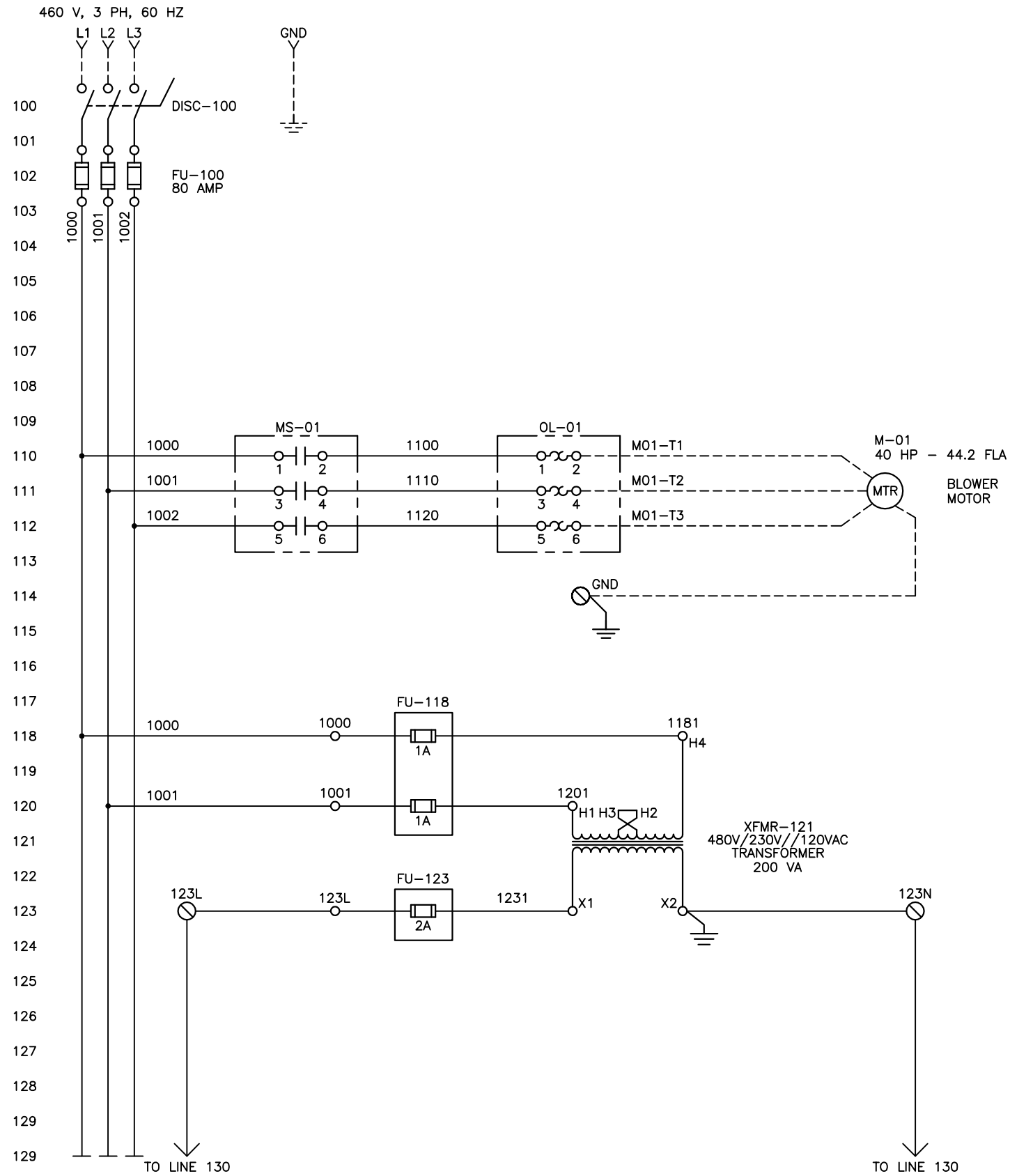
FILE
492221-001-03



Twin City Fan Companies, Ltd.
 Aerovent • Fiber-Aire • TC Axial • TC Ventco • Twin City Fan & Blower
 Member of Air Movement and Control Association
 5959 Trenton Lane - Minneapolis, MN 55442-3238

TITLE
330 BCS CLASS 17 DISCHARGE DAMPER
PARALLEL BLADE WITH STUFFING BOXES

SCALE	DRAWING NO.	ROW/SHEET	ITEM	REV.
NTS	AC492221	001	03	-



THIS DRAWING IS CONFIDENTIAL PROPERTY OF ENGINEERING FIRM DO NOT DUPLICATE IN ANY TYPE WITHOUT PROPER WRITTEN PERMISSION. IF YOU ARE NOT THE INTENDED CLIENT PLEASE DESTROY THIS DOCUMENT.			DUST COLLECTOR BLOWER PACKAGE 480VAC, 3 PHASE - 40 HP WITH DUST COLLECTOR TIMER CONTROLLER		
REV.	DESCRIPTION	DATE	FILE PATH: c:/clients/		PLOT DATE: 01/01/04
1	CREATED	7/28/08			
			DRAWN BY: ECS	DATE: 7/28/08	DRAWING SCALE: NONE
			CHECKED BY: ECS	DATE: 7/28/08	CLIENT: AIR CLEANING TECH, INC.
					PROJECT NUMBER: 50 HP 100