



**Date:** February 16, 2015

**Project:** KODIAK

**To:**

**Attn:**

**Recommended Equipment:**

(17) WB-1054 booths at an outside dimension of 48" and

(1) WB-1055 booth

---

**Avani Environmental Intl. Inc.**

95 Cypress Drive

Youngsville, NC 27596

[www.avanienvironmental.com](http://www.avanienvironmental.com)

Phone: (919) 570-2862

Fax: (919) 570-2863

Email: [info@avanienvironmental.com](mailto:info@avanienvironmental.com)

[www.weldingbooths.com](http://www.weldingbooths.com)

The drawings, AutoCAD, 3-D Models, and specifications are the property of Avani Environmental Intl. Inc. (AE) and may not be reproduced, distributed, modified, or otherwise used, except provided herein, without the express written permission of AE.

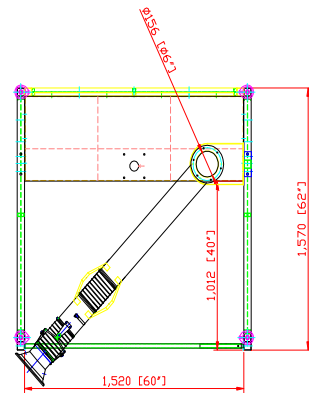
DO NOT SCALE

IF IN DOUBT ASK



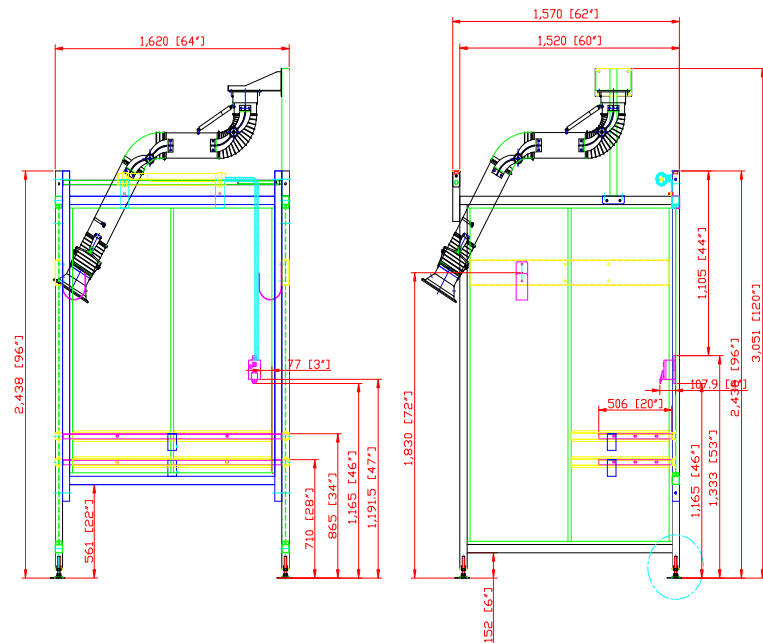
Revisions

Rev	Description	Date	Approved



**WB-1055 WELDING BOOTH SPECIFICATIONS**

- Construction: 12 gauge steel
- Plates on feet for attaching to floor
- Back Panels as per drawing,
- Side panels to that reach to 6" from floor level
- Adjustable shelf between 28-34" from floor
- 120 volt electrical outlet
- Fluorescent light
- One J hook on each side panel, located one foot from back wall, 6' off floor
- Accessories will be (18) 1220 arms, and (18) BR005 brackets
- Welded nuts and welding nuts



AVANI ENVIRONMENTAL INTL. INC. Sales Department

95 Cypress Drive

Youngsville, NC 27596

(919) 570-2862

info@avanienvironmental.com

Drawn by:	2015-01-23	Name	***	Part Number:	***	Title:	Booth WB-1055
Checked by:							

The drawings, AutoCAD, 3-D Models, and specifications are the property of Avani Environmental Intl. Inc. (AE) and may not be reproduced, distributed, modified, or otherwise used, except provided herein, without the express written permission of AE.

Size A Scale 1 = 25

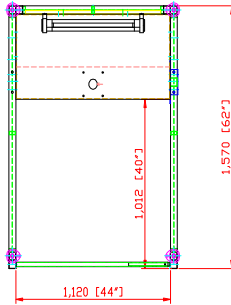
Drawing Number: WB-5x55

DO NOT SCALE

IF IN DOUBT ASK

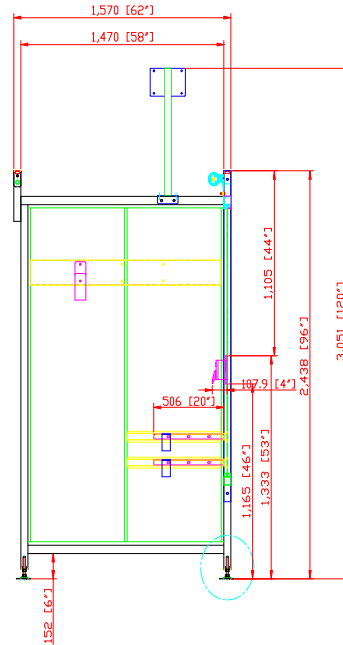
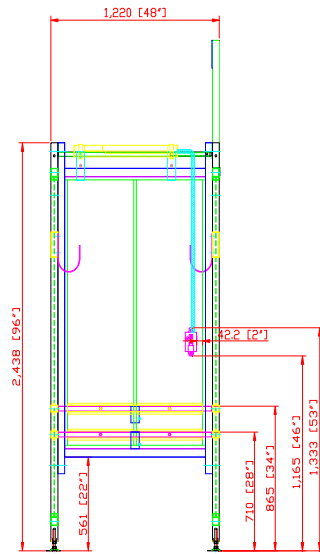


Revisions			
Rev	Description	Date	Approved



**WB-1054 WELDING BOOTH SPECIFICATIONS**

- Construction: 12 gauge steel
- Plates on feet for attaching to floor
- Adjustable shelf between 28-34" from floor
- Back Panels as per drawing,
- Side panels to that reach to 6" from floor level
- 120 volt electrical outlet
- Fluorescent light
- One J hook on each side panel, located one foot from back wall, 6' off floor
- Accessories will be (18) 1220 arms, and (18) BR005 brackets
- Welded nuts and welding nuts



AVANI ENVIRONMENTAL INTL. INC. Sales Department  
 95 Cypress Drive  
 Youngsville, NC 27596  
 (919) 570-2862  
 info@avanienvironmental.com

Drawn by:	Date:	Name:	Part Number:	Title:
***	2015-01-23	***	***	Booth WB-1054
Checked by:	The drawings, AutoCAD, 3-D Models, and specifications are the property of Avani Environmental Int. Inc. (AE) and may not be reproduced, distributed, modified, or otherwise used, except provided herein, without the express written permission of AE.			Drawing Number:
				WB-5x5S

Size: A  
 Scale: 1 = 25

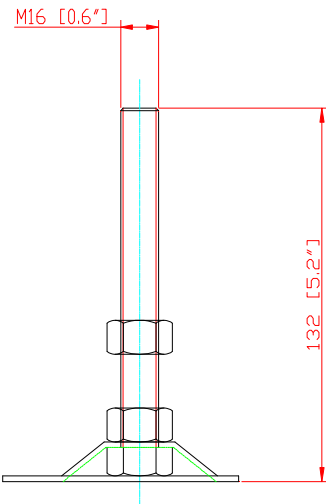
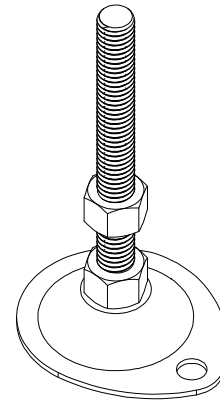
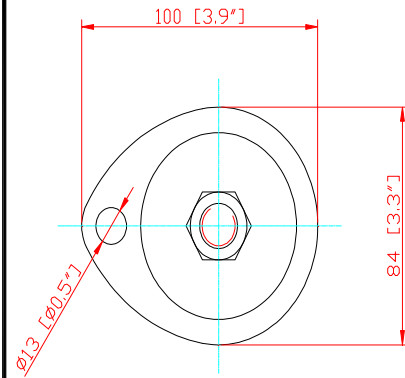
DO NOT SCALE

IF IN DOUBT ASK



Revisions

Rev	Description	Date	Approved



AVANI ENVIRONMENTAL INT'L. INC. Sales Department  
 95 Cypress Drive  
 Youngsville, NC 27596

(919) 570-2862  
 info@avanienvironmental.com

Date	Name	Part Number:
2015-01-22	***	***

The drawings, AutoCAD, 3-D Models, and specifications are the property of Avani Environmental Int'l. Inc. (AE) and may not be reproduced, distributed, modified, or otherwise used, except provided herein, without the express written permission of AE.

Title: Plate for Booth		
Size A	Scale 1 = 25	Drawing Number: REVISION A