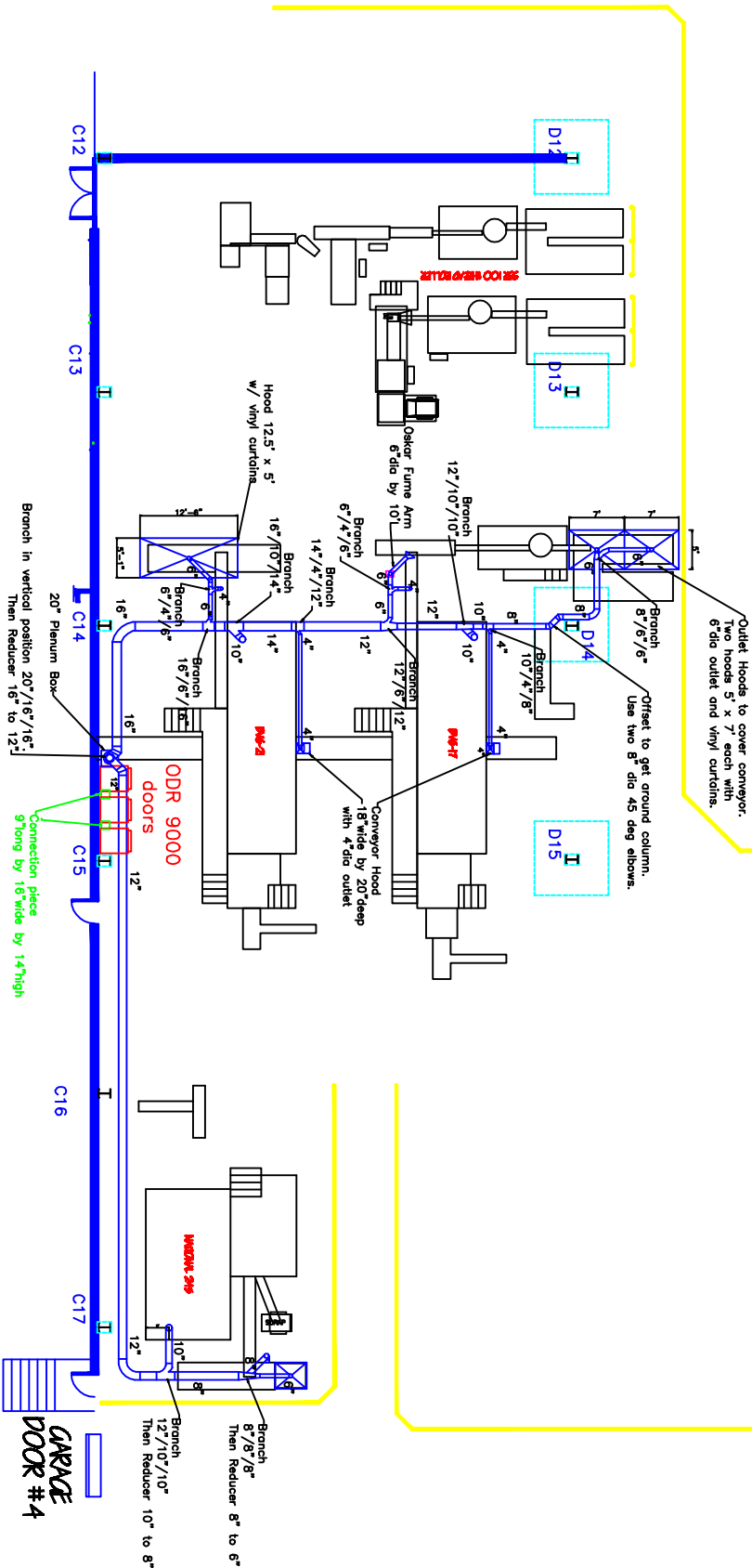


Ductwork Layout for ODR 9000



- NOTE:
- A) ODR 9000: The actual length will be 137' end to end. Add 24" to the length for the inlet plenum box. The ODR 9000 should fit between the column and floor trench.
 - B) Each ODR tower will have a 10HP motor. At 480 volts the full load amps of each motor is 14.5 amps.
 - C) The control boxes are shipped loose. Wall mount and reconnection to Assemblies by others. The pumps will be attached to each tower.
 - D) Bottom of ductwork is about 12' off of floor.

Industrial Air Quality
102 AG DRIVE
Youngsville, NC 27596
P# 919-562-7181 F# 919-562-7182
Project: Unytle Drive
Drawing: Ductwork layout
Date: 11/30/09 Drawn by: RAV
Sheet No: Rev 2

