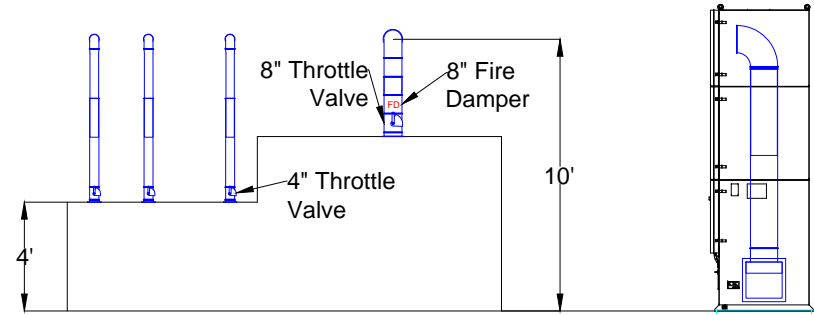
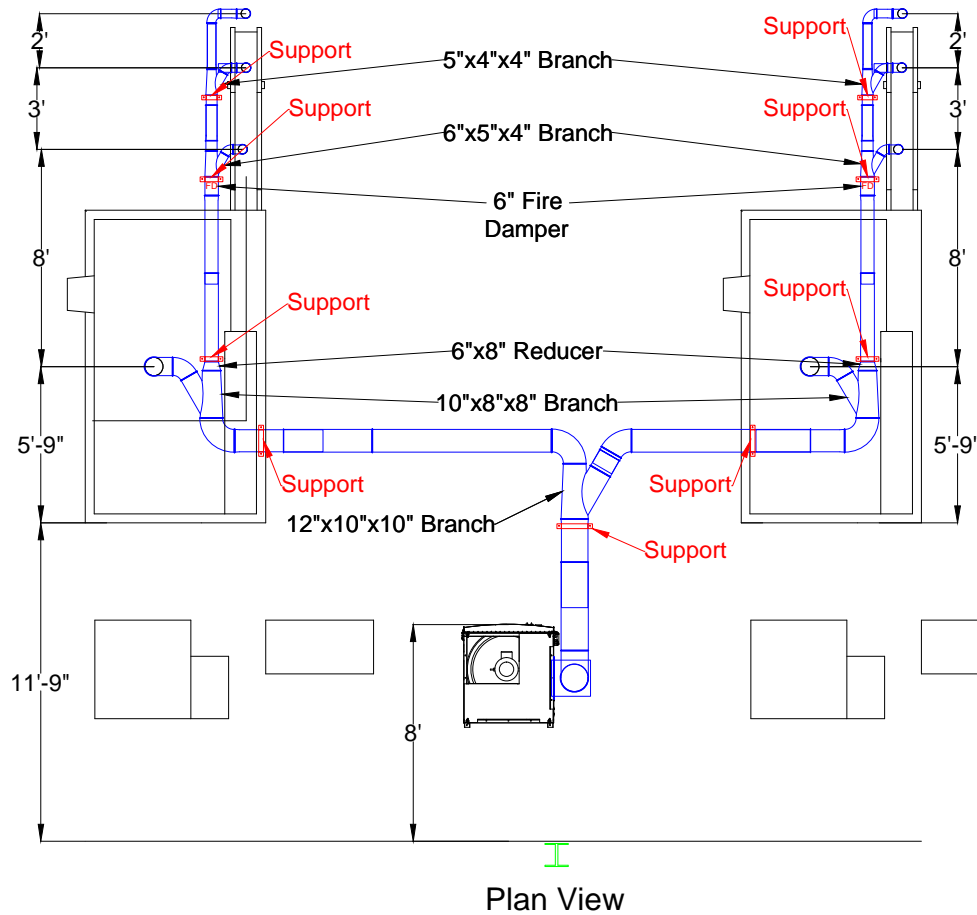


MacLean Fogg Sanshing Fastech Corp Duct Layout



Elevation View

Notes:

1. Jacobs Tubing
2. Support from Machine & Ceiling via Gripples
3. Will ship 10" Throttle Valve to bleed in while awaiting other system (ETA 2/14)
4. Support system denoted in red

Avani Environmental Intl.
95 Cypress Drive
Youngsville, NC 27596
P# 919-570-2862 F# 919-570-2863

Avani

| | |
|--|----------------------|
| Project: MacLean Fogg | |
| Drawing: Sanshing Fastech Duct Layout | |
| Date: 11/11/13 | Drawn by: MDT |
| Sheet No: 1 of 1 | Rev.: 1 |