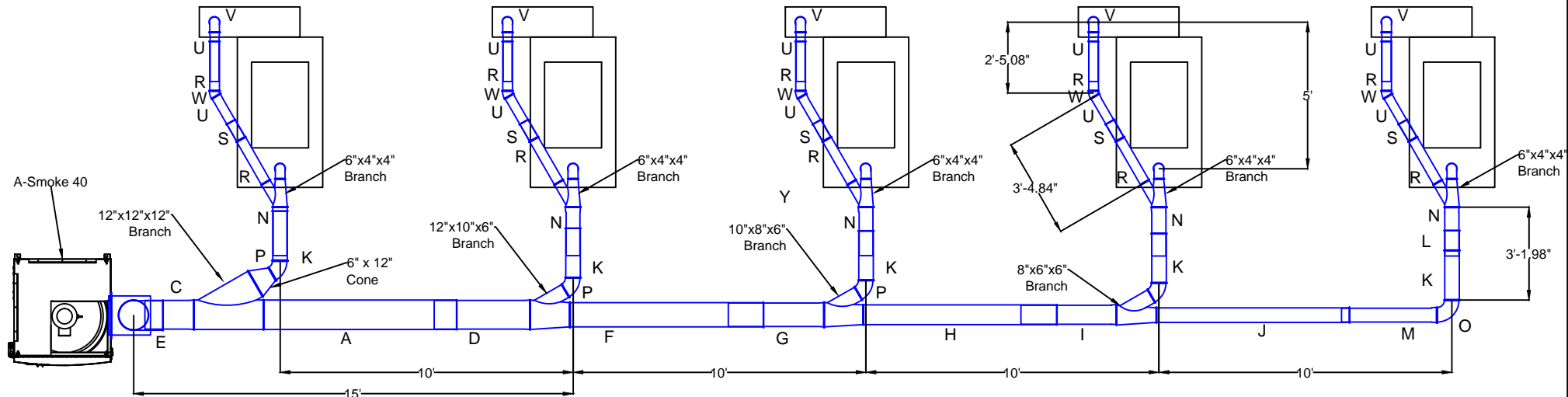


Truform IAF - SO20225

Duct Layout

Notes:

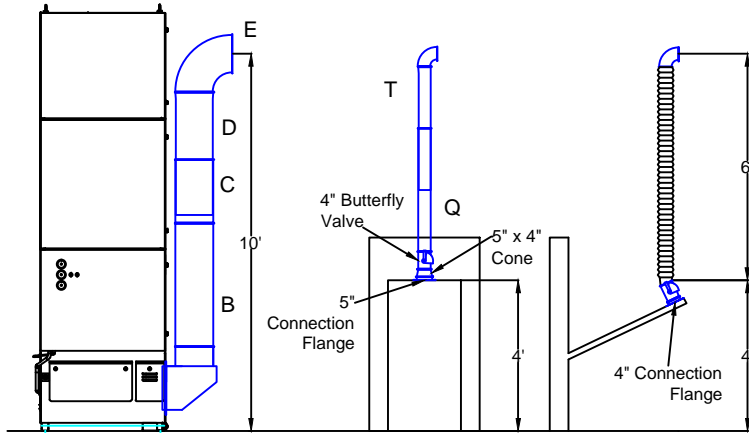
1. Jacobs Tubing
2. A-Smoke 40
3. Butterfly Valves on every drop for flow control



Plan View

Parts:

- | | |
|-----------------------------|----------------------------|
| A=12" dia. 2000mm tube | N=6" dia. 500mm slip tube |
| B=12" dia. 1000mm tube | O=6" dia. 90 deg elbow |
| C=12" dia. 500mm tube | P=6" dia. 60 deg elbow |
| D=12" dia. 1000mm slip tube | Q=4" dia. 1000mm tube |
| E=12" dia. 90 deg elbow | R=4" dia. 500mm tube |
| F=10" dia. 2000mm tube | S=4" dia. 200mm tube |
| G=10" dia. 1000mm slip tube | T=4" dia. 1000mm slip tube |
| H=8" dia. 2000mm tube | U=4" dia. 500mm slip tube |
| I=8" dia. 1000mm slip tube | V=4" dia. 90 deg elbow |
| J=6" dia. 2000mm tube | W=4" dia. 30 deg elbow |
| K=6" dia. 500mm tube | X=6" dia. 1000mm tube |
| L=6" dia. 200mm tube | Y=4" dia. 2000mm tube |
| M=6" dia. 1000mm slip tube | |



Elevation View

Avani Environmental
 95 Cypress Drive
 Youngsville, NC 27596
 P# 919-570-2862 F# 919-570-2863

Avani

Project: Truform IAF - SO20225

Drawing: Duct Layout

Date: 9/27/13

Drawn by: MDT/WWB

Sheet No: 1

Rev.: 4