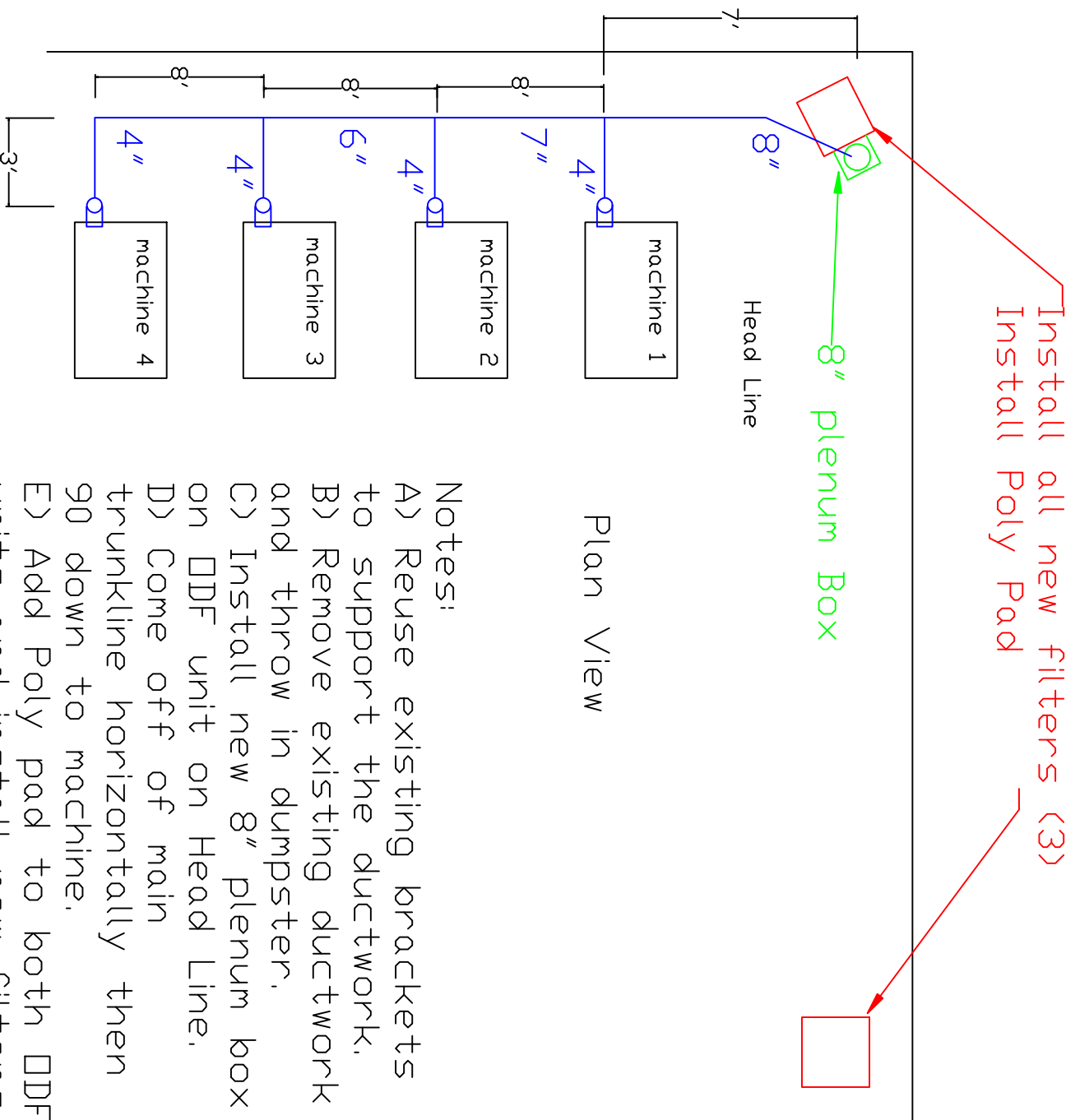


# Timken -Lab Head Line Ductwork Layout



## Notes:

- A) Reuse existing brackets to support the ductwork.
- B) Remove existing ductwork and throw in dumpster.
- C) Install new 8" plenum box on DDF unit on Head Line.
- D) Come off of main trunkline horizontally then 90 down to machine.
- E) Add Poly pad to both DDF units and install new filters.