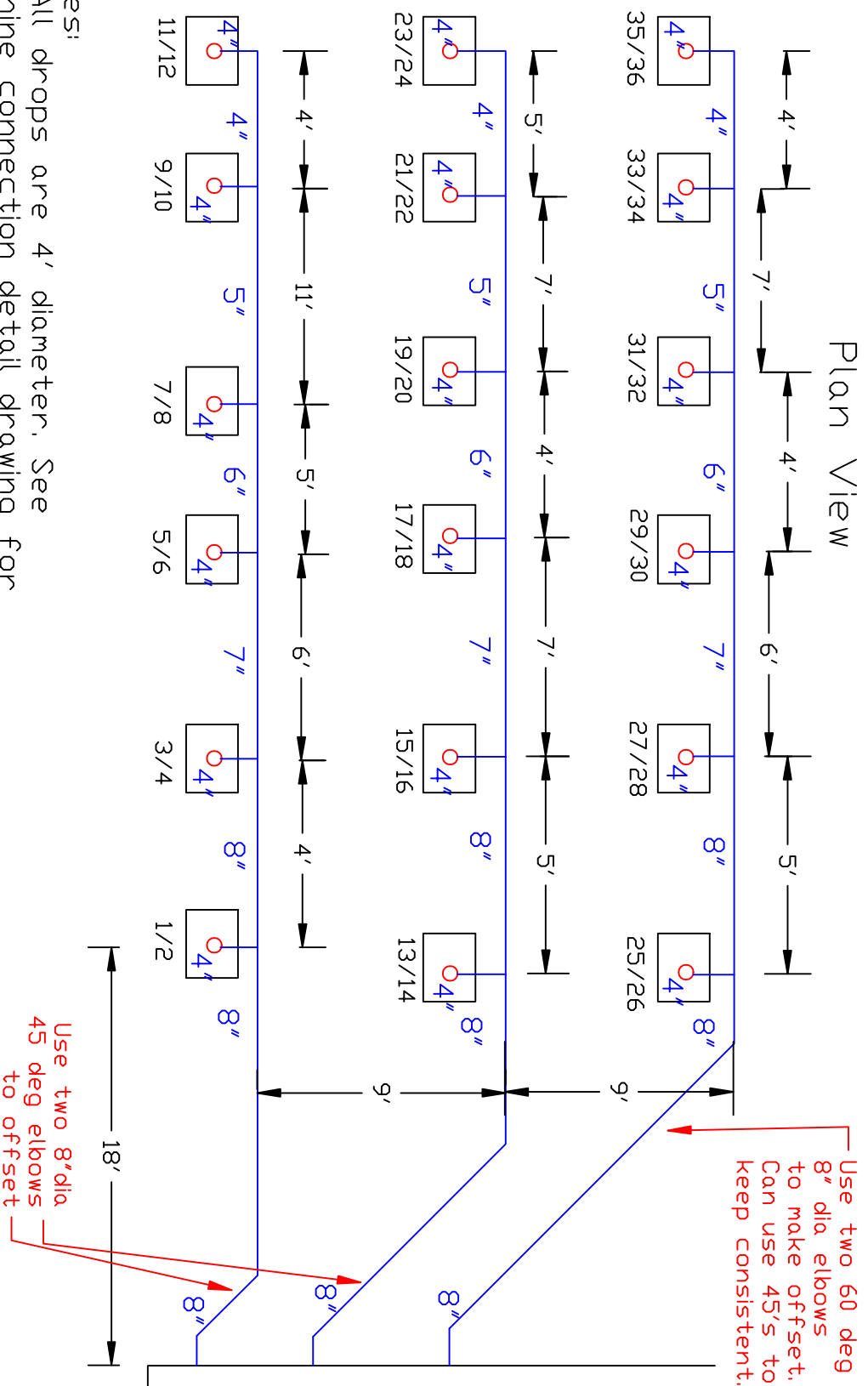


# Ductwork Layout for Radial Lines

## Plan View



### Notes:

- A) All drops are 4' diameter. See Machine connection detail drawing for more details.
- B) Hang ductwork at same height as existing. Can reuse same hangers.
- C) Run ductwork through same holes in wall.
- D) Cover holes with plates.

Industrial Air Quality  
 102 AG DRIVE  
 Youngsville, NC 27596  
 P# 919-562-7181 F# 919-562-7182

Project: Timken - Test Lab  
 Drawing: Planet Radial lines  
 Date: 10/19/09 Drawn by: RAV

Sheet No: 2 of 2