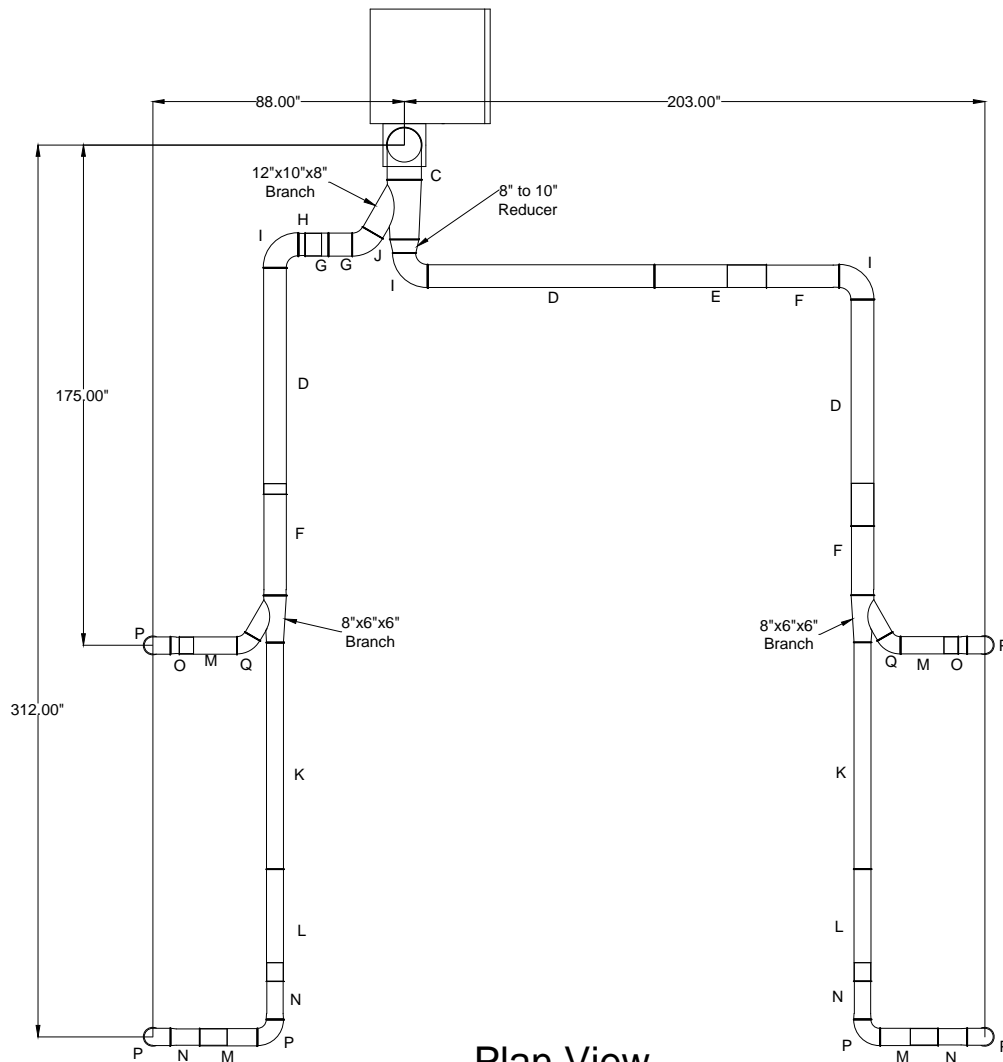


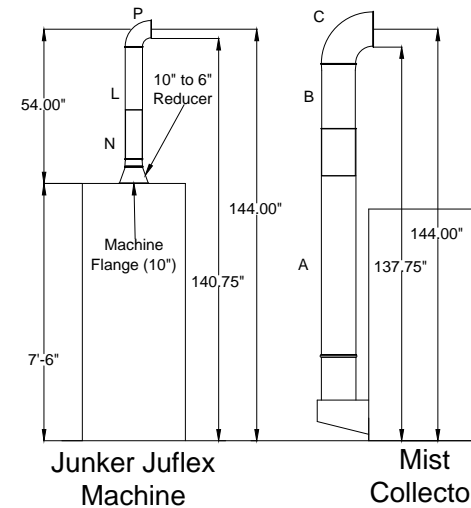
# ThyssenKrupp SO#19001 GL20 & GL11 to Collector



Plan View

- Notes:
1. All duct Jacobs Tubing
  2. Will hang from ceiling via gripples
  3. Machine inlets 10", will reduce to 6" to efficiently remove mist

- A=12" dia. 2000mm tube
- B=12" dia. 1000mm slip tube
- C=12" dia. 90 deg elbow
- D=8" dia. 2000mm tube
- E=8" dia. 1000mm tube
- F=8" dia. 1000mm slip tube
- G=8" dia. 200mm tube
- H=8" dia. 200mm slip tube
- I=8" dia. 90 deg elbow
- J=8" dia. 60 deg elbow
- K=6" dia. 2000mm tube
- L=6" dia. 1000mm tube
- M=6" dia. 500mm tube
- N=6" dia. 500mm slip tube
- O=6" dia. 200mm slip tube
- P=6" dia. 90 deg elbow
- Q=6" dia. 60 deg elbow



Elevation View

Avani Environmental Intl. Inc.  
95 Cypress Drive  
Youngsville, NC 27596  
P# 919-570-2862 F# 919-570-2863

**Avani**

Project: ThyssenKrupp SO#19001  
Drawing: GL20 & GL11 Duct Layout  
Date: 9-28-12 Drawn by: MDT  
Sheet No: 1 OF 1