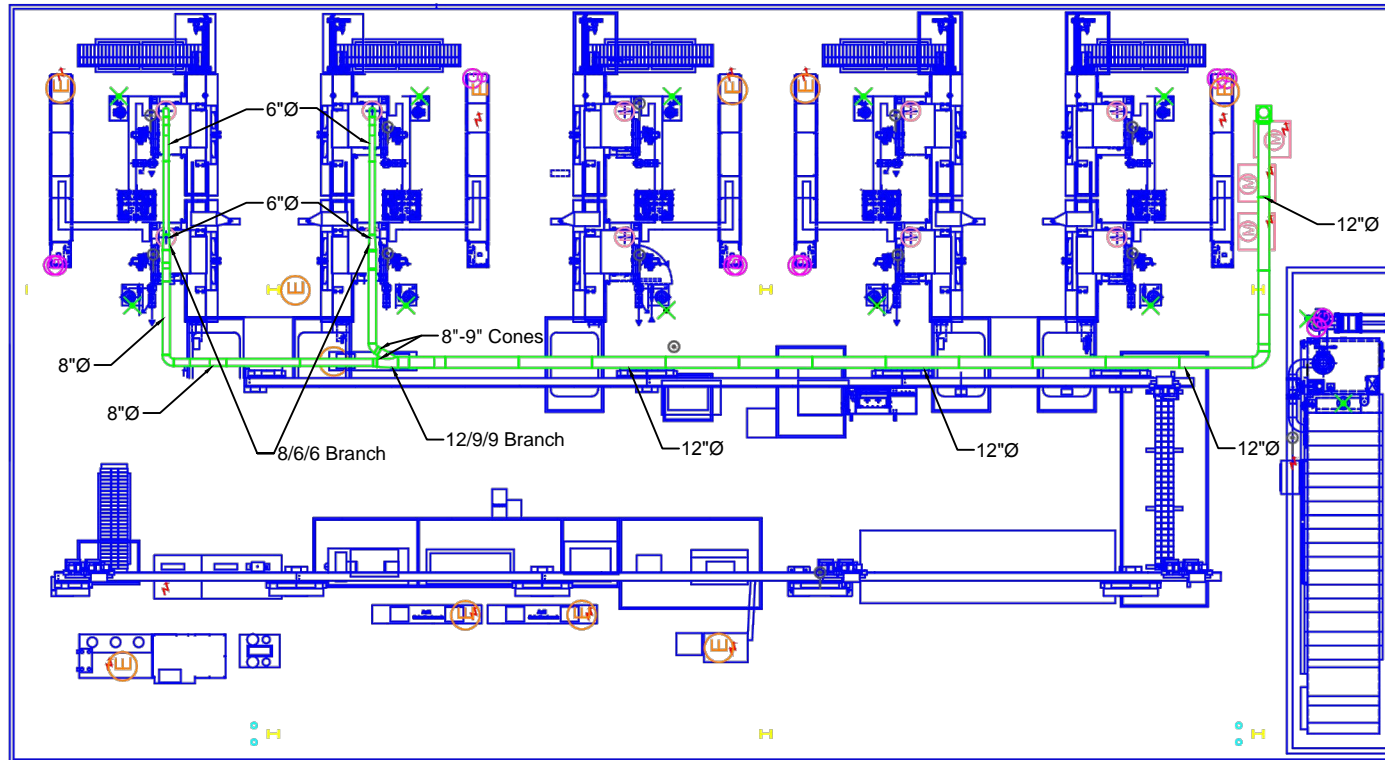


GL-20 GL-11



Notes:

- 1) Reuse existing 8" pipe
- 2) Run duct above existing K&B duct
- 3) All pipe on this system is Jacob
- 4) Customer will relocate Absolent
- 5)

PRELIMINARY

This product has not been tested for seismic calculations.

Any Customer requested, or caused changes or deviations from the approved drawing that effect, T&M will require a change order.

Avani Environmental Intl. Inc.
 95 Cypress Drive
 Youngsville, NC 27596
 P# 919-570-2862 F# 919-570-2863

Avani

Project: Thyssen Krupp	
Drawing: Machines GL-20 & GL-11	
Date: 4/8/15	Drawn by: DJT
Sheet No:	Rev 0