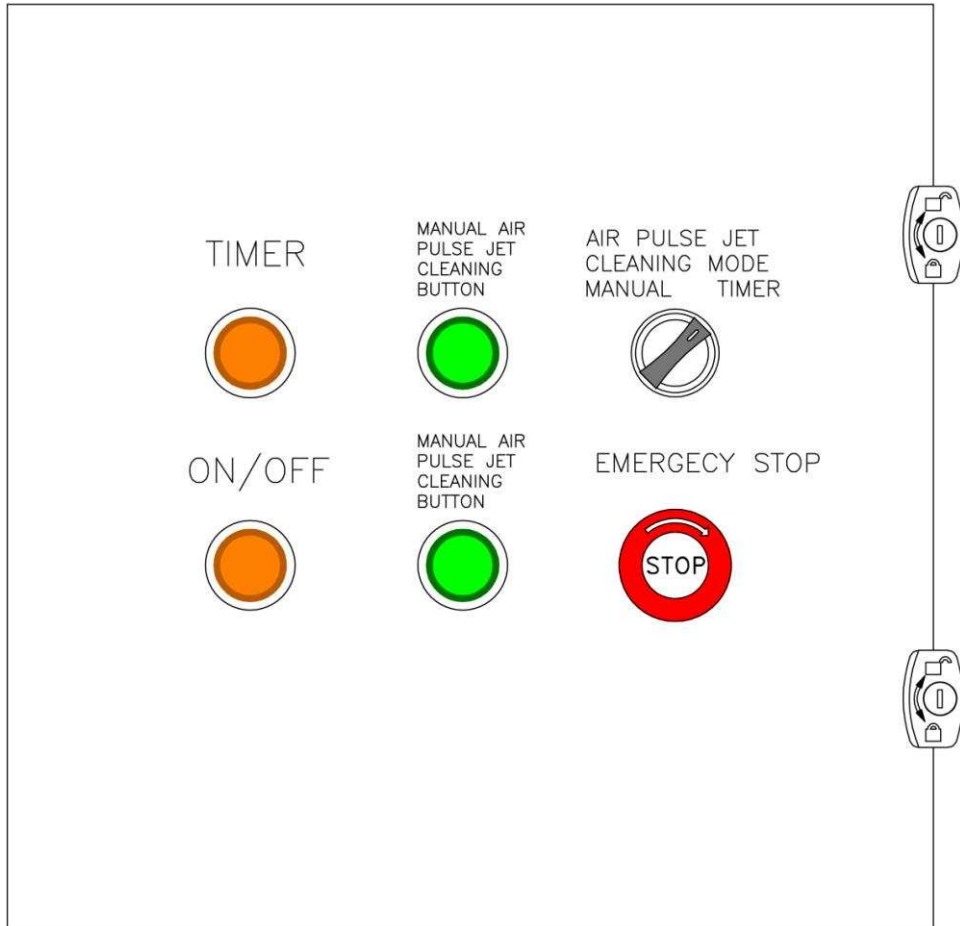
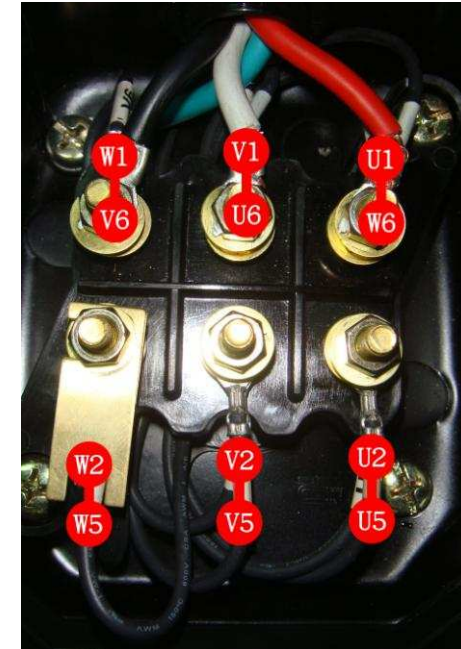
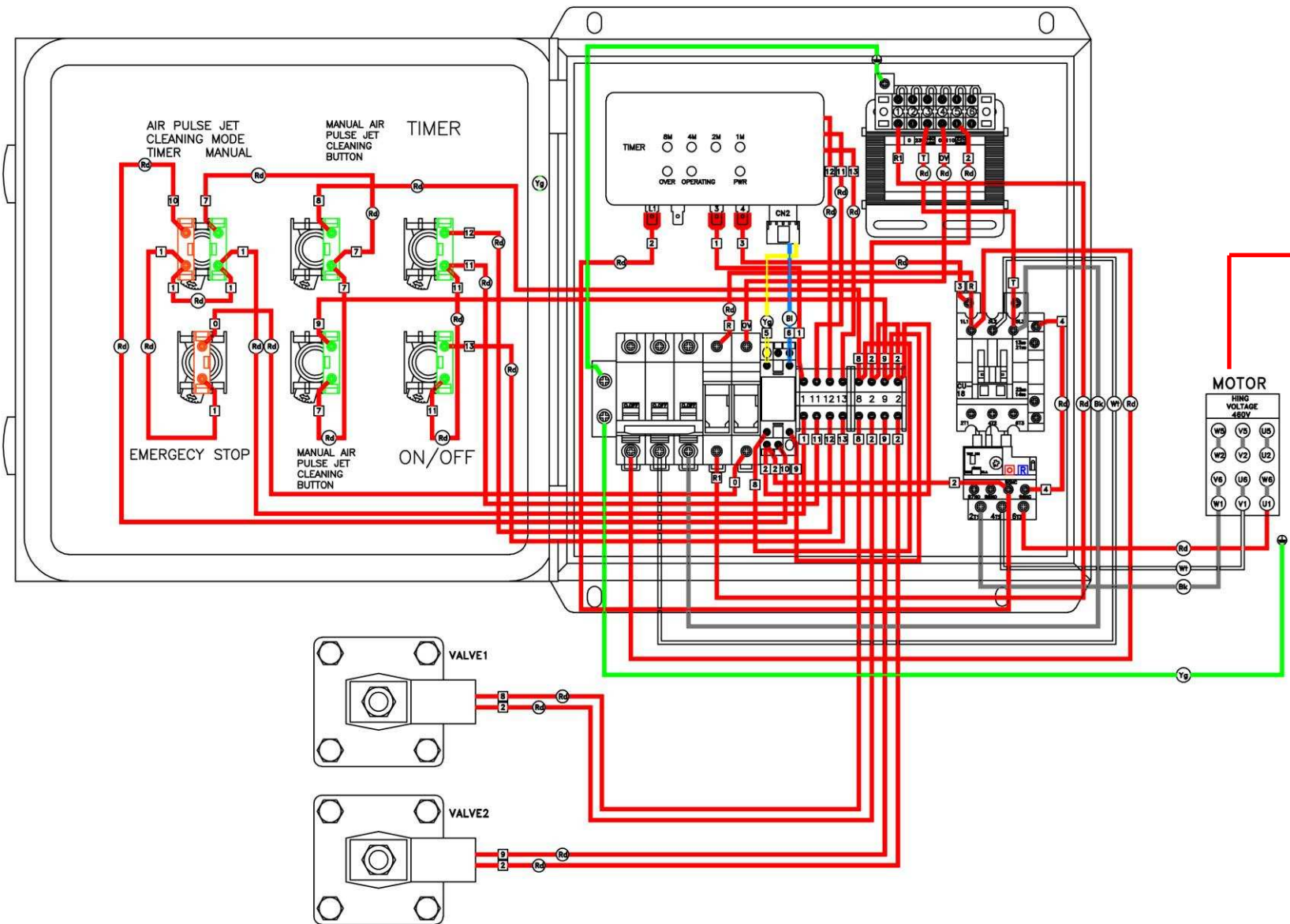


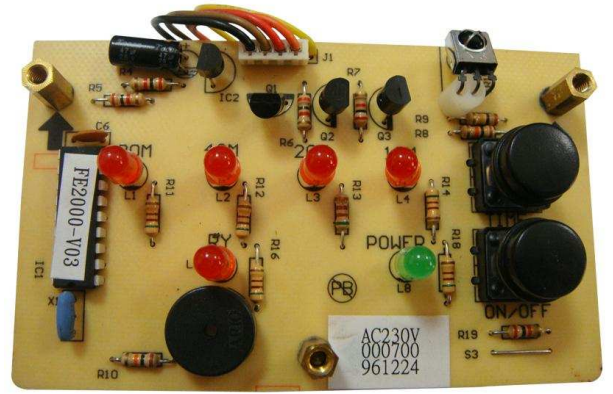
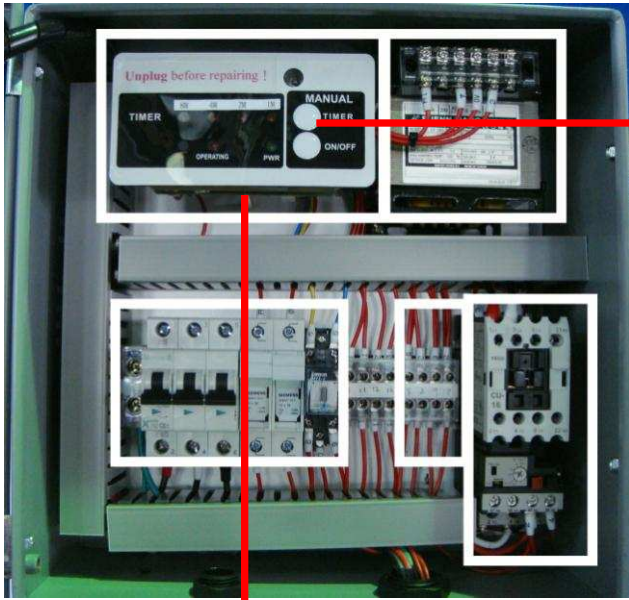
Main Electrical Box Wiring For SDC-10-8MD (460V)



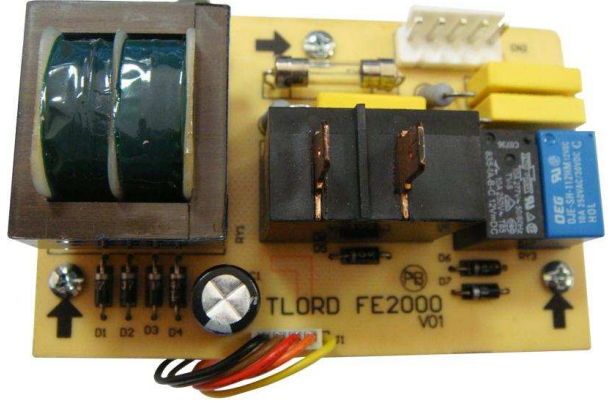
Main Electrical Box Wiring For SDC-10-8MD (460V)



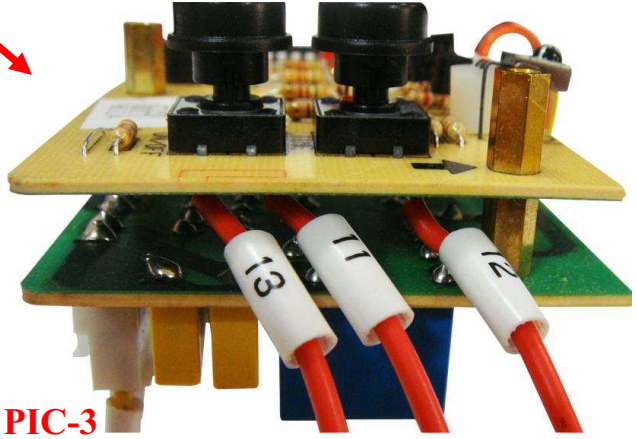
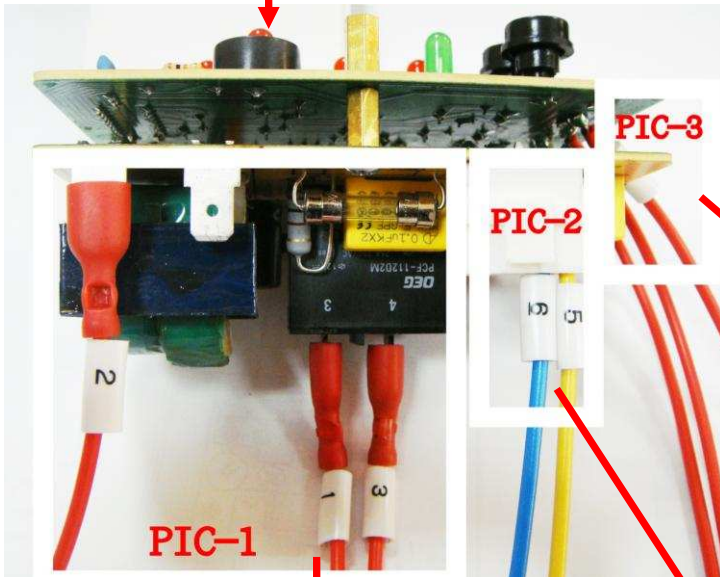
Main Electrical Box Components



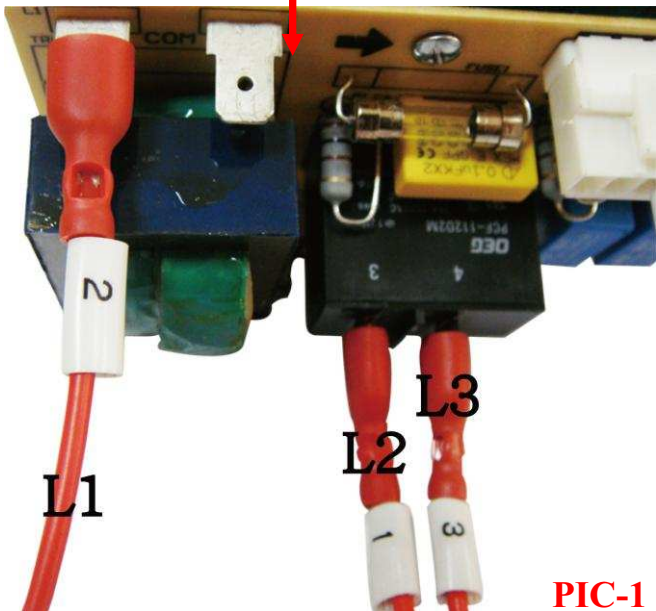
◆ IC Board (Front)



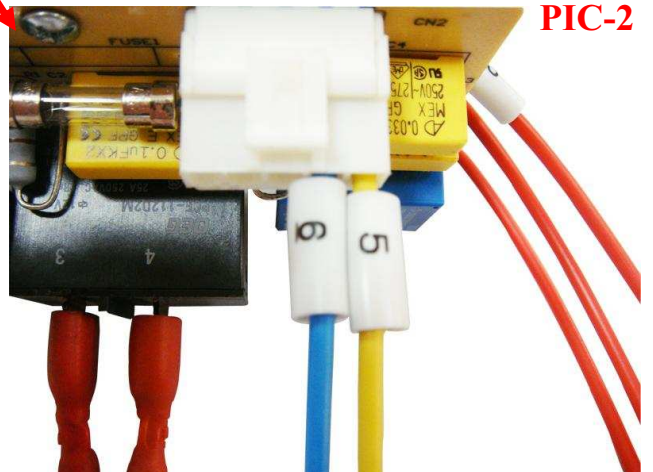
◆ IC Board (Back)



- ◆ 12 : TIMER.
- ◆ 13 : ON/OFF

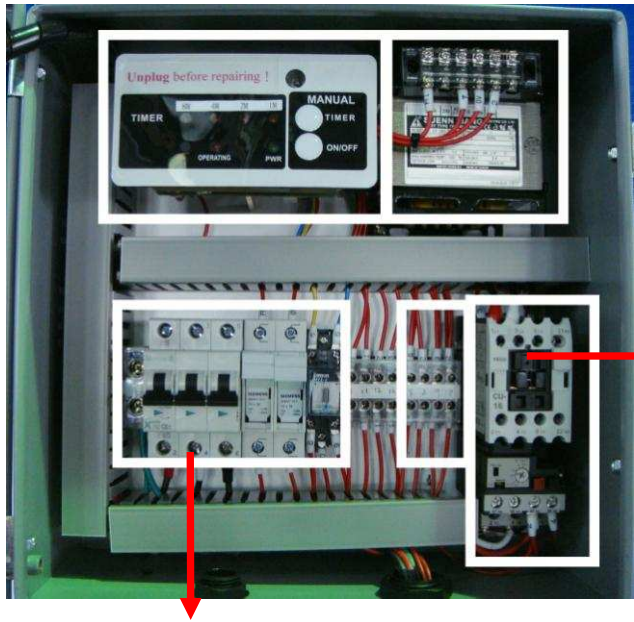


- ◆ L1/L2 : The main power.
- ◆ L3 : The blower.

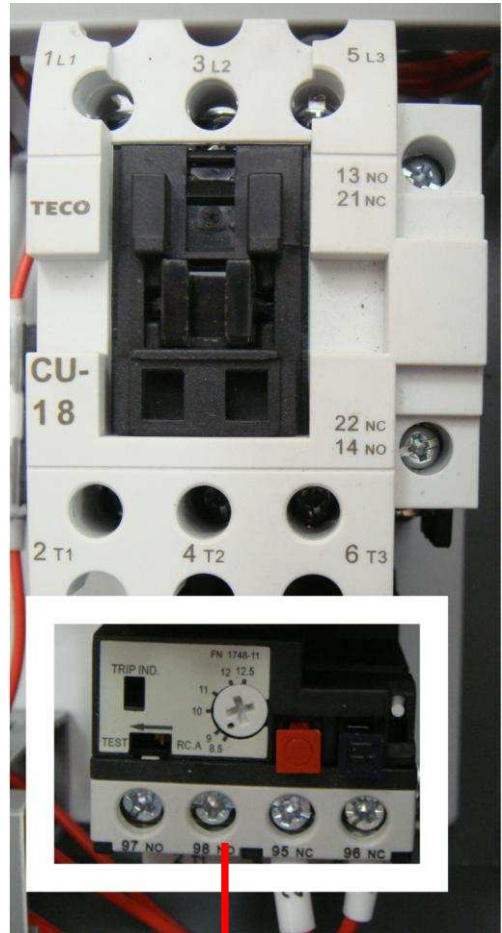


◆ Air pulse jet system.

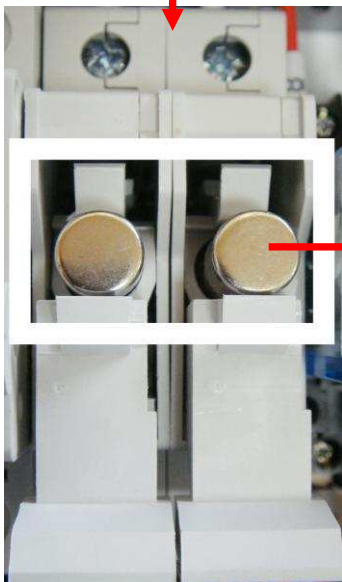
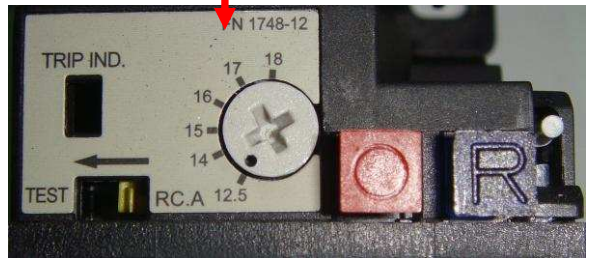
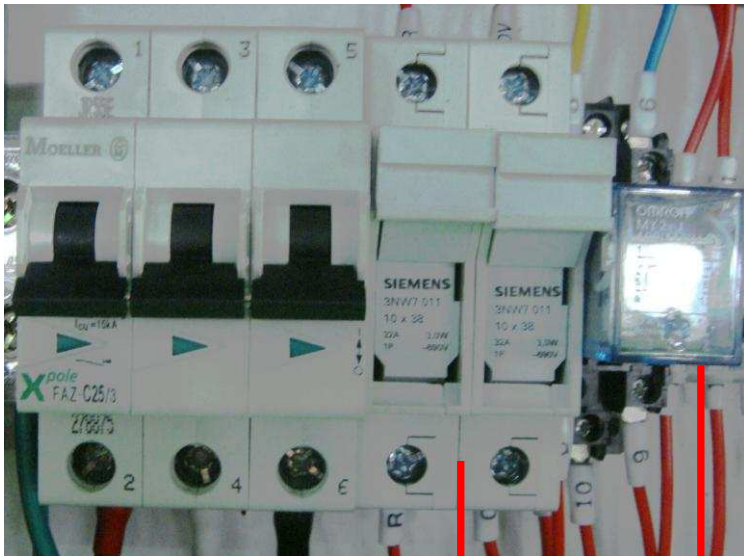
Main Electrical Box Components



◆ Contactor and thermal relay. (10HP-460V)

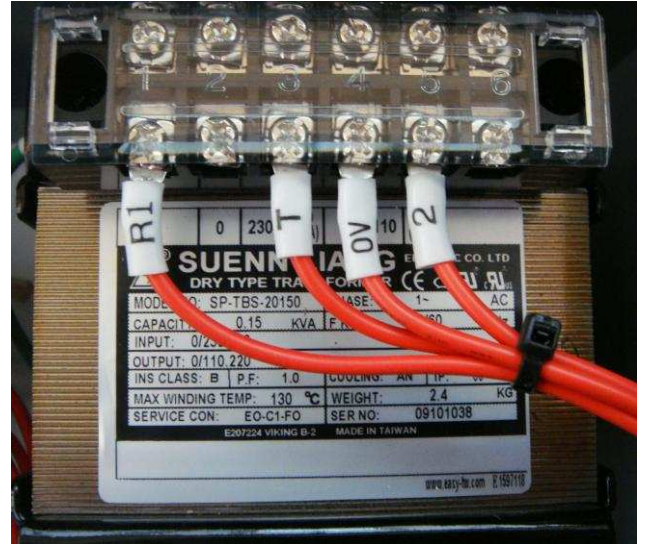


◆ Input relay, fuse bus, relay.



Main Electrical Box Components

◆ Transformer for 460V.



◆ Air pulse jet system.



◆ Coin

