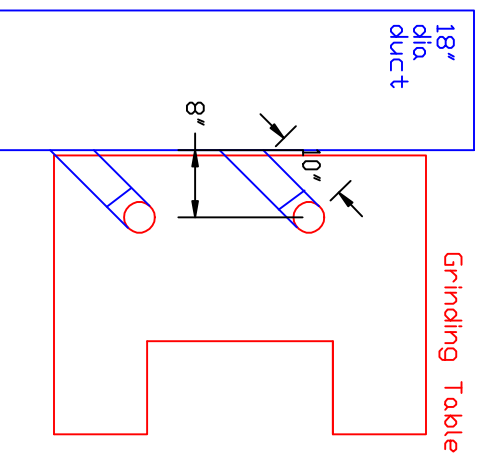
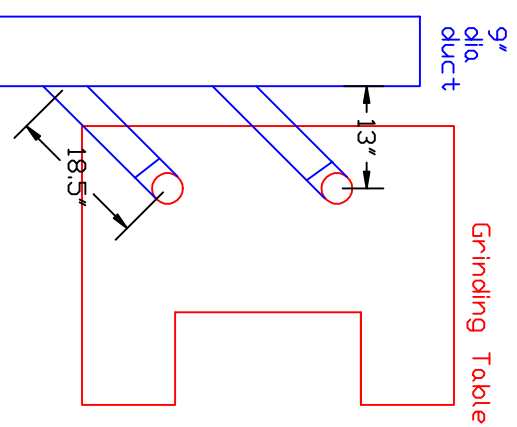


# Ductwork Layout for Grinding Tables

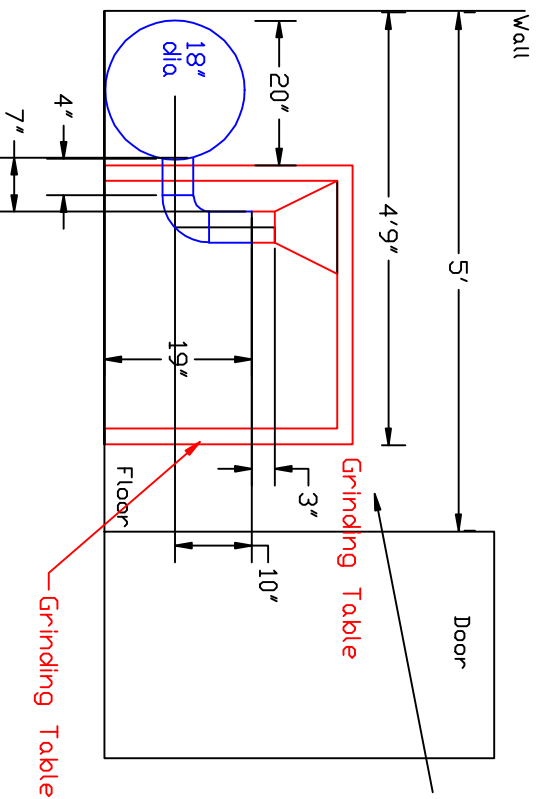
Plan View of 18" dia duct



Plan View of 9" dia duct



Side View



Note: The grinding table will be about 3" from the door opening if we run the ductwork behind the grinding tables.

|                                 |
|---------------------------------|
| Industrial Air Quality          |
| 102 AG DRIVE                    |
| Toungesville, NC 27596          |
| PH 919-562-7181 F# 919-562-7182 |
| <b>IAQ</b>                      |
| Project: Greenville Tech        |
| Drawing: Grinding Table         |
| Date: 9/25/09   Drawn by: RAV   |
| Sheet No:                       |