



REPRESENTED BY:

TODD AIR SOLUTIONS
101 E FISHER ST, 3rd FLOOR
SALISBURY NC 28144
Phone: 704 630-1101
Fax: 704 630-0528

DRAWING SUBMITTAL

CUSTOMER:

AVANI ENVIRONMENTAL
PO BOX 1279
YOUNGSVILLE, NC 27596

DATE: 4/6/2011

ATTENTION: Mr. Ken Haga
P.O. # 3002
CFV # 1104135
REPRESENTATIVE ORDER # CFQ# 183197

X REFERENCE APPROVAL CORRECTION

Table with 2 columns: DRAWING NO. and DESCRIPTION. Rows include SPECIFICATION SHEET, MODEL: HDBI-240, INLET AND DISCHARGE FLANGE, and DISCHARGE DAMPER.

REMARKS: 2D AUTOCAD DRAWING INCLUDED.

SPECIFICATION SHEET

CFV NO. 1104135	CUSTOMER ID NUMBER 3566220	PAGE 1	
S O L D	AVANI ENVIRONMENTAL PO BOX 1279 YOUNGSVILLE, NC 27596		S H I P T O
	CUSTOMER P.O. NUMBER 3002	BUYER MR. KEN HAGA	SCHEDULED SHIP DATE 4/21/11

MARKS
SO#: 16951 / PO#: 110244802DS

SHIP VIA FedEx Freight Economy	REPRESENTATIVE TODD AIR SOLUTIONS	REP. ORDER NO. CFQ# 183197	SHIPPING CHARGES Bill 'Sold-To'						
QTY. 1	DESCRIPTION HEAVY DUTY BI BLOWER	MODEL HDBI-240	ROT CW	DISCH UB	ARR 4	WHEEL/PROP HDBI 100%	INLET		
MOTOR DATA	HP 15	RPM 1750	PH 3	CYCLE 60	VOLTAGE SEE BELOW	FRAME 254T	ENCLOSURE TEFC	SUPPLIED BY CFV	INSTALLED BY CFV
	CFV MOTOR PART NUMBER 376163S							GROOVES	FXD/ADJ
FAN DATA	DENSITY .075	TEMP. 70°F	ALTITUDE	CFM 8500	SP 6.500	RPM 1750	BHP 11.900	MOTOR SHEAVE	BUSHING
AT OPERATING CONDITIONS								FAN SHEAVE	BUSHING
MOTOR VENDOR MODEL NUMBER	1LE21212BB114AA3								

Record Print, 2D CAD Drawings

Complete Motor Description:

MTR,15 HP,1425/1750 RPM,3PH,50/60Hz,200/400/50 & 208-230/460/60,TEFC,Prem Eff,FM ,254T,1.15 SF,F Insul.,40C Amb.,Sealed Bearings,F1 Box,Alum. Frame, CE, 1.00 SF @ 50 HZ., GP100A SERIES, ALTERNATE #1LE21112BB114AA3,Siemens

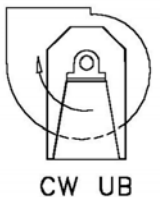
Maximum allowable wheel speed at 70°F is 2132 RPM

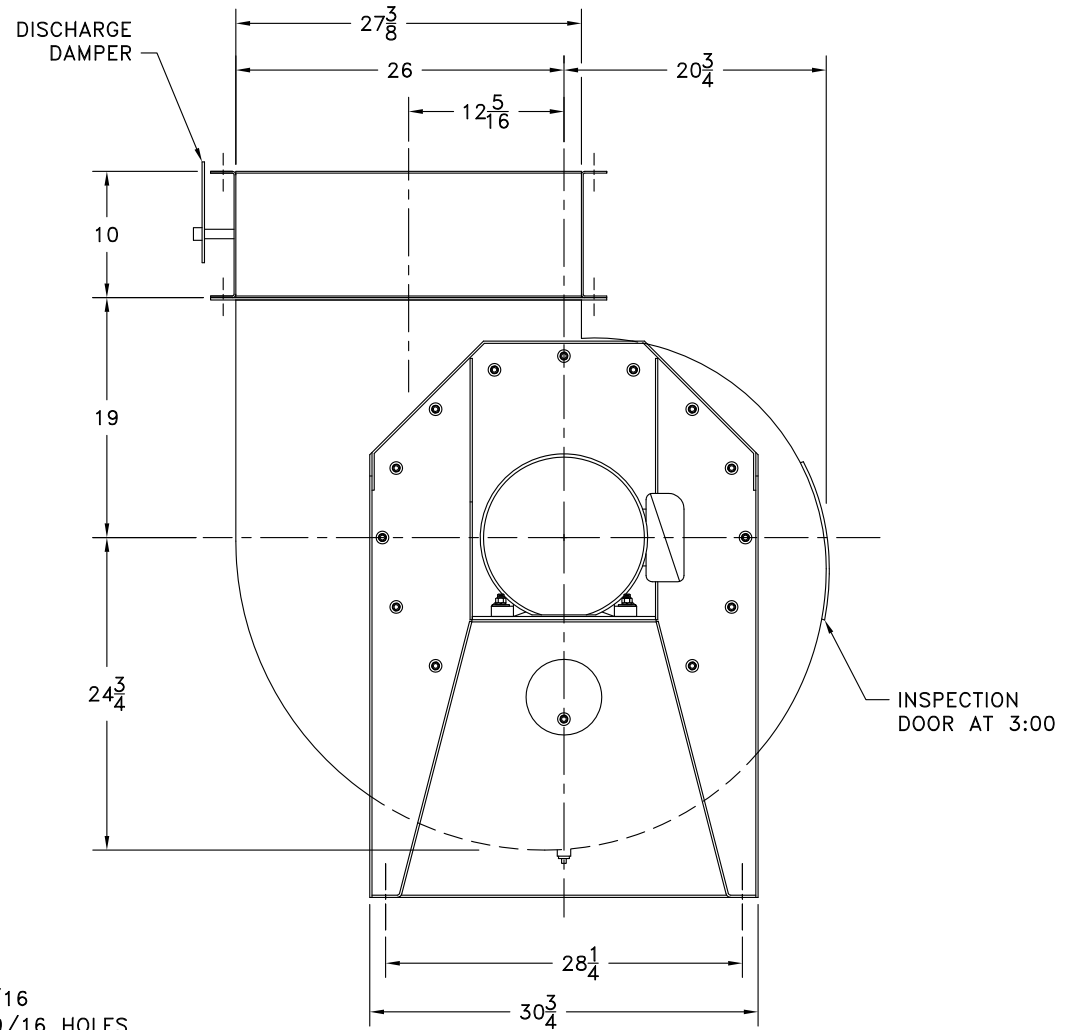
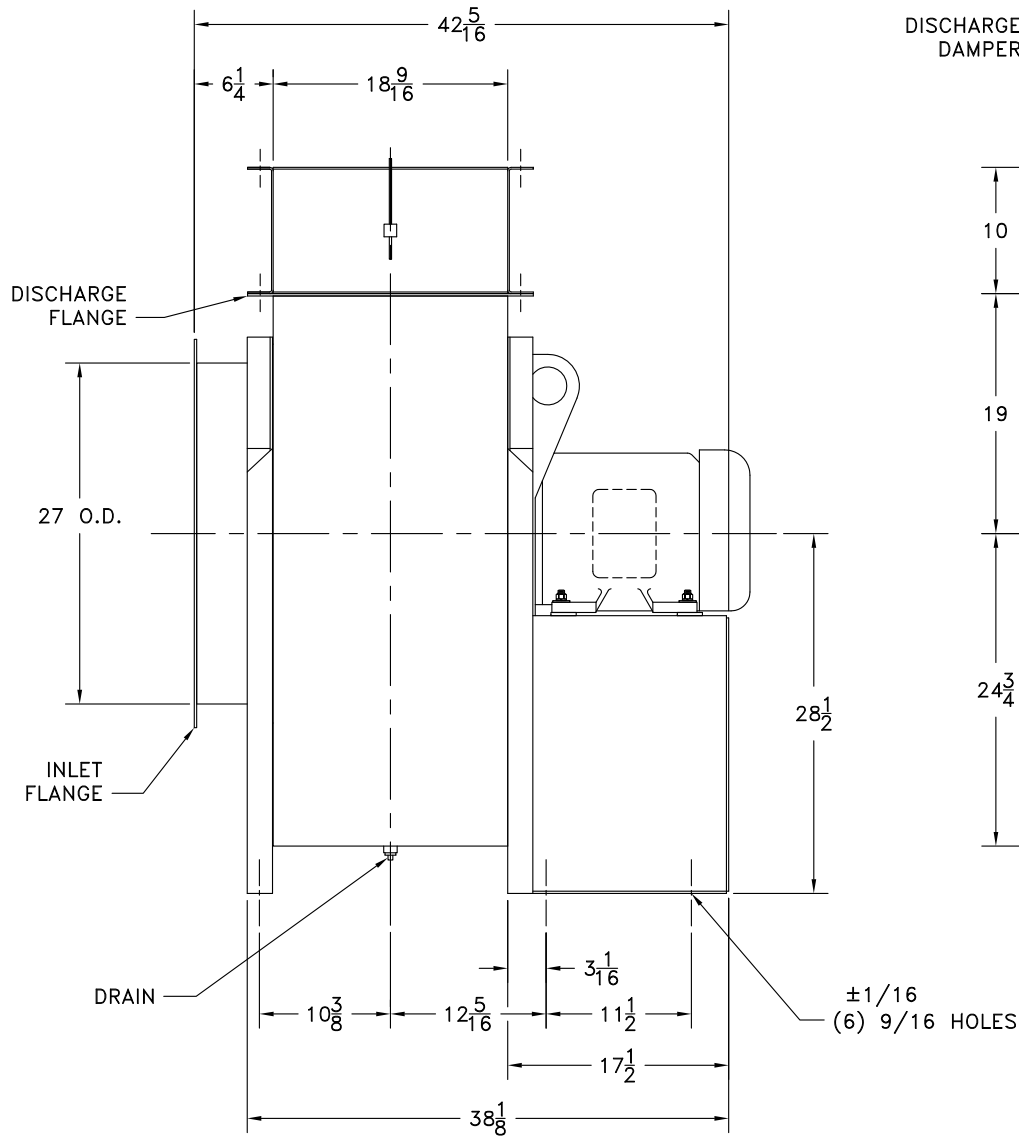
- CLASS II WHEEL CONSTRUCTION
- MANUAL CONTROLLED OPPOSED BLADE DISCHARGE DAMPER
- DRILL DISCHARGE FLANGE STANDARD
- DRILL INLET FLANGE STANDARD BOLT CIRCLE ON-CENTERS
- QUICK OPEN INSPECTION DOOR AT 3 O'CLOCK
- DRAIN
- TEFLON SHAFT SEAL

Estimated Shipping Weight: 980 pounds

AVANI BLUE PAINT

Submittal Email: khaga@avanienvironmental.com



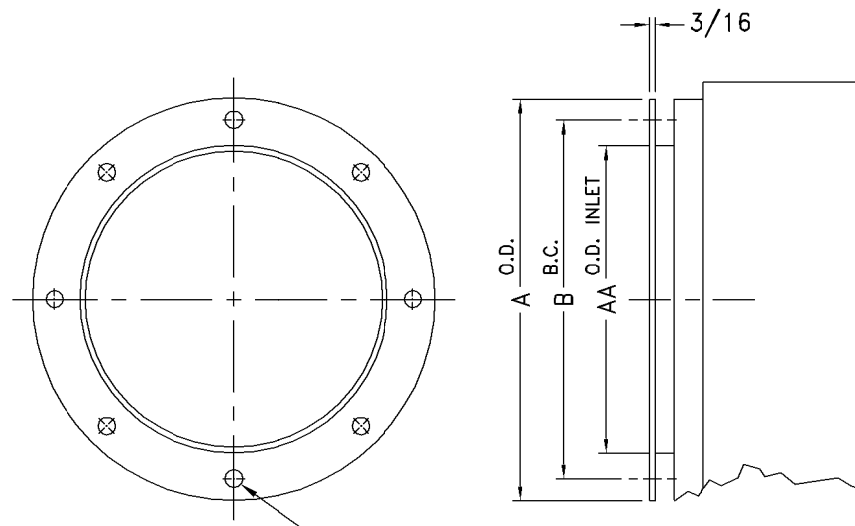


±1/16
(6) 9/16 HOLES

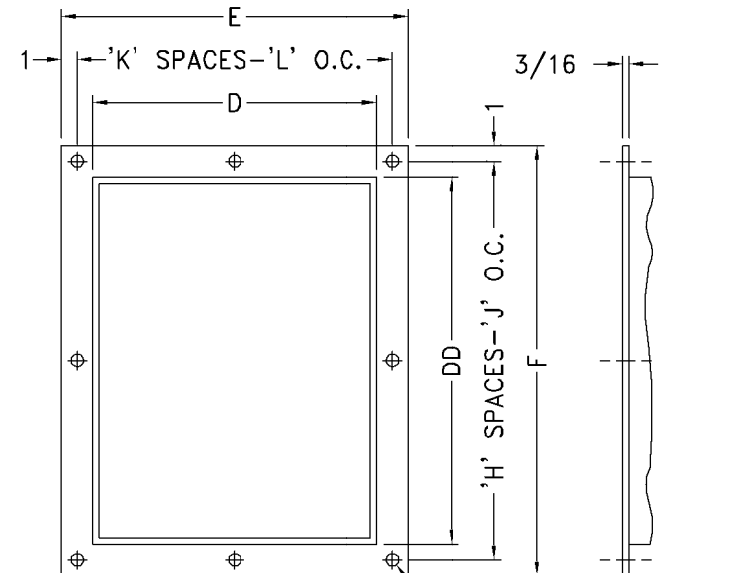
CW UB DISCHARGE SHOWN

- NOTES:
1. MOTOR: 15 HP, 1750 RPM, 254T FRAME, TEFC.
 2. SEE DWG. A27205 FOR INLET AND DISCHARGE FLANGES.
 3. SEE DWG. A17110 FOR DISCHARGE DAMPER.
 4. CLASS II WHEEL CONSTRUCTION.
 5. TEFLON SHAFT SEAL.

				SUPERSEDES:		TOLERANCES: FRACTIONS ±1/8 ANGLES: ± 1° DECIMALS: X.XXX = ±0.005 X.XX = ±0.060 X.X = ±0.120		SCALE: FULL IN CAD		 7697 SNIDER ROAD MASON, OHIO 45040	
				SIMILAR TO:		ALL DIMENSIONS IN INCHES UNLESS OTHERWISE SPECIFIED		DATE: 04/06/11			
						MATERIAL:		DR. BY: JH		SHEET REV.	
				CERTIFIED		ASSEMBLY		CHK. BY:		DRAWING NO. A 1104135	
NO. DESCRIPTION DATE INITIALS										1 of 1	
REVISIONS											



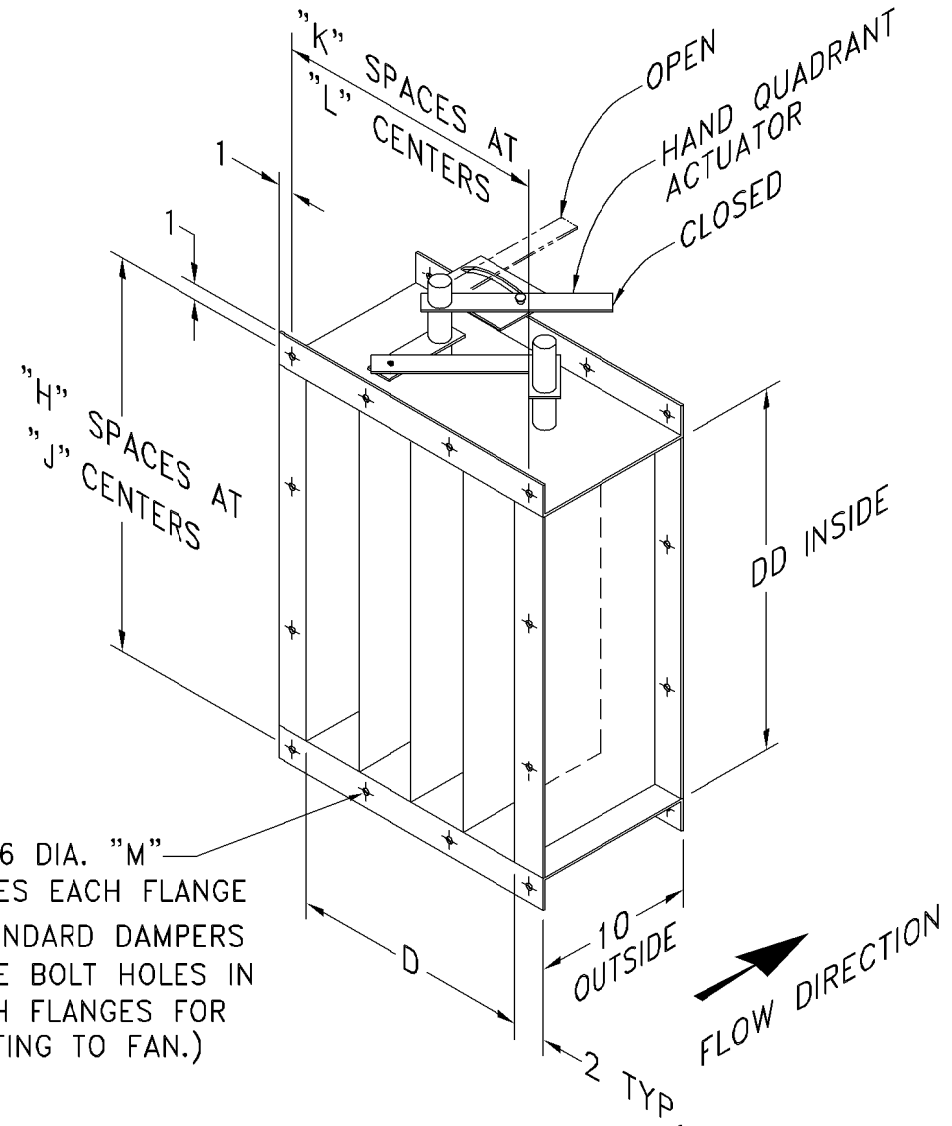
INLET FLANGE
"N" HOLES, "P" DIA.



DISCHARGE FLANGE ①
"M" 7/16 DIA. HOLES

SIZE	INLET					DISCHARGE								
	A O.D.	B B.C.	N	AA DIA.	P	D	E	F	H	J	K	L	M	DD
120	16	14-3/8	8	13-1/4	7/16	9-3/8	13-3/8	17-11/16	2	7-27/32	2	5-11/16	8	13-3/4
130	17-3/4	15-15/16	8	14-5/8	7/16	10-3/8	14-3/8	19-3/16	2	8-19/32	2	6-3/16	8	15-1/4
150	19-1/4	17-1/2	8	16-1/8	7/16	11-3/8	15-3/8	20-3/4	3	6-1/4	2	6-11/16	10	16-13/16
160	21-1/8	19-3/8	8	18	7/16	12-1/2	16-1/2	22-7/16	3	6-13/16	2	7-1/4	10	18-7/16
180	23-1/2	21-1/2	12	20	7/16	13-7/8	17-7/8	24-1/2	3	7-1/2	2	7-15/16	10	20-3/8
200	25-1/2	23-1/2	12	22	7/16	15-1/4	19-1/4	26-3/8	3	8-1/8	3	5-3/4	12	22-3/8
220	28-1/8	26-1/8	12	24-5/8	7/16	16-7/8	20-15/16	28-7/8	4	6-23/32	3	6-5/16	14	24-7/8
X 240	30-3/4	28-3/4	16	27	7/16	18-9/16	22-5/8	31-3/8	4	7-11/32	3	6-7/8	14	27-3/8
270	33-3/4	31-5/8	16	30	7/16	20-7/16	24-1/2	34-1/8	4	8-1/32	3	7-1/2	14	30-1/16
300	37-1/4	35-1/4	16	33-1/2	7/16	22-3/4	26-3/4	37-5/8	5	7-1/8	3	8-1/4	16	33-9/16
330	40-3/8	38-3/4	16	36-3/4	1/2	24-7/8	28-7/8	40-7/8	7	5-9/16	5	5-3/8	24	36-3/4
360	43-5/8	42	16	40	1/2	27-1/4	31-1/4	44-1/4	7	6-1/32	5	5-27/32	24	40-1/4

NOTE:
① NOT AVAILABLE ON ANY MODEL FOR DOWNBLAST, BOTTOM ANGULAR DOWN OR TOP ANGULAR DOWN DISCHARGE POSITIONS.
DISCHARGE FLANGE IS STANDARD ON SIZES -270 THRU -360.



SIZE	D	DD	H	J	K	L	M
120	9-3/8	13-11/16	2	7-27/32	2	5-11/16	8
130	10-3/8	15-3/16		8-19/32		6-3/16	
150	11-3/8	16-3/4	3	6-1/4	2	6-11/16	10
160	12-1/2	18-3/8		6-13/16		7-1/4	
180	13-7/8	20-3/8		7-1/2		7-15/16	
200	15-1/4	22-3/8	4	8-1/8	3	5-3/4	12
220	16-15/16	24-7/8		6-23/32		6-5/16	
240	18-5/8	27-3/8	4	7-11/32	3	6-7/8	14
270	20-1/2	30-1/8		8-1/32		7-1/2	
300	22-3/4	33-9/16	5	7-1/8	5	8-1/4	16
330	24-7/8	36-7/8	7	5-9/16		5-3/8	
360	27-1/4	40-1/4		6-1/32	5-27/32	24	

* HOLES PER FLANGE.

7/16 DIA. "M"
HOLES EACH FLANGE
(STANDARD DAMPERS
HAVE BOLT HOLES IN
BOTH FLANGES FOR
BOLTING TO FAN.)

- NOTES:
1. OPPOSED BLADE IS STANDARD. PARALLEL BLADE IS OPTIONAL.
 2. DAMPER BLADES WILL BE PERPENDICULAR TO FAN SHAFT.
 3. STANDARD MATERIAL IS CARBON STEEL WITH RUST INHIBITING PRIMER. OPTIONAL MATERIAL _____.
 4. STANDARD CONSTRUCTION MAX. TEMPERATURE: 300° F.
 OPTIONAL HIGH TEMPERATURE CONSTRUCTION MAX. TEMPERATURE: 800° F.

