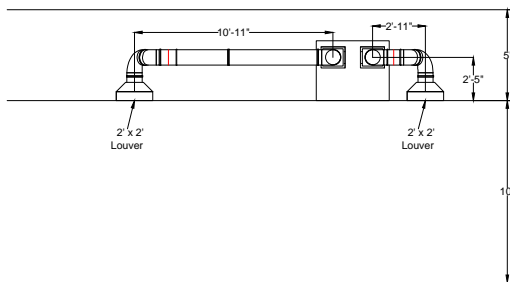
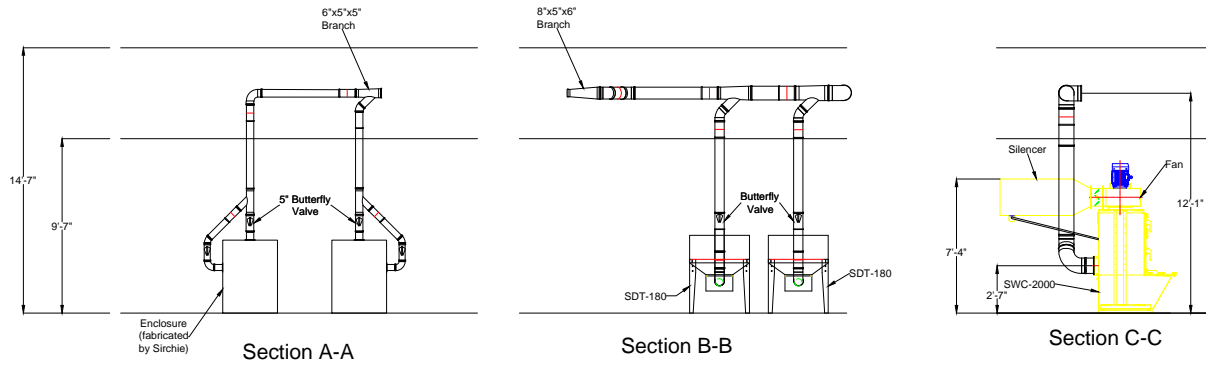
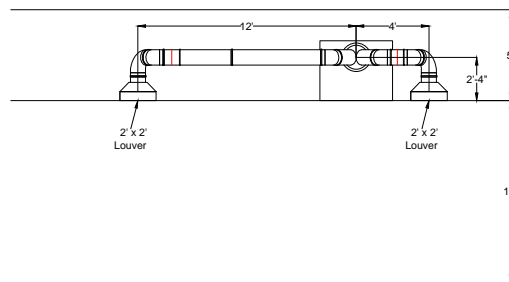


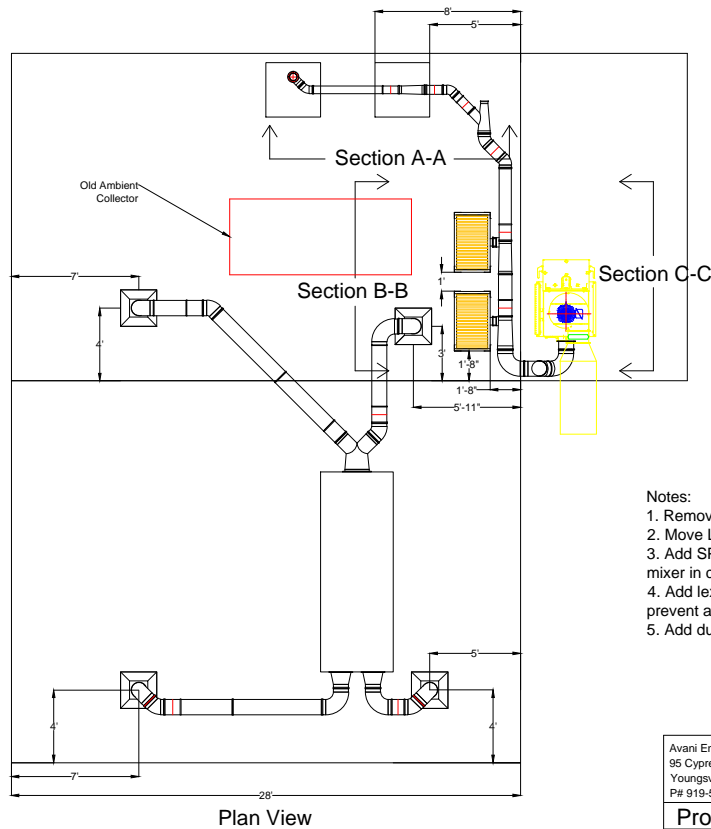
# Sirchie Fingerprint Labs Post-Install Duct Changes



Elevation View - Exhaust



Elevation View - Intake



Plan View

**Notes:**

1. Remove 6" Fume Arm
2. Move Louvers to Ambient Dust Room
3. Add SPC-2000 Portable with (2) 4" Arms to pickup mixer in corner
4. Add lexan covers on top of SDT-180 tables to prevent ambient dust to escape
5. Add dust collection bag to wet collector outlet

Avani Environmental Int.  
95 Cypress Drive  
Youngsville, NC 27596  
P# 919-570-2862 F# 919-570-2863

**Avani**

Project: Sirchie Fingerprint Labs

Drawing: Post-Install Duct Changes

Date: 12/19/13

Drawn by: MDT

Sheet No: 1 of 1

Rev.: 0