



Date: May 12, 2015

To: San Bernardino Valley College

Project:

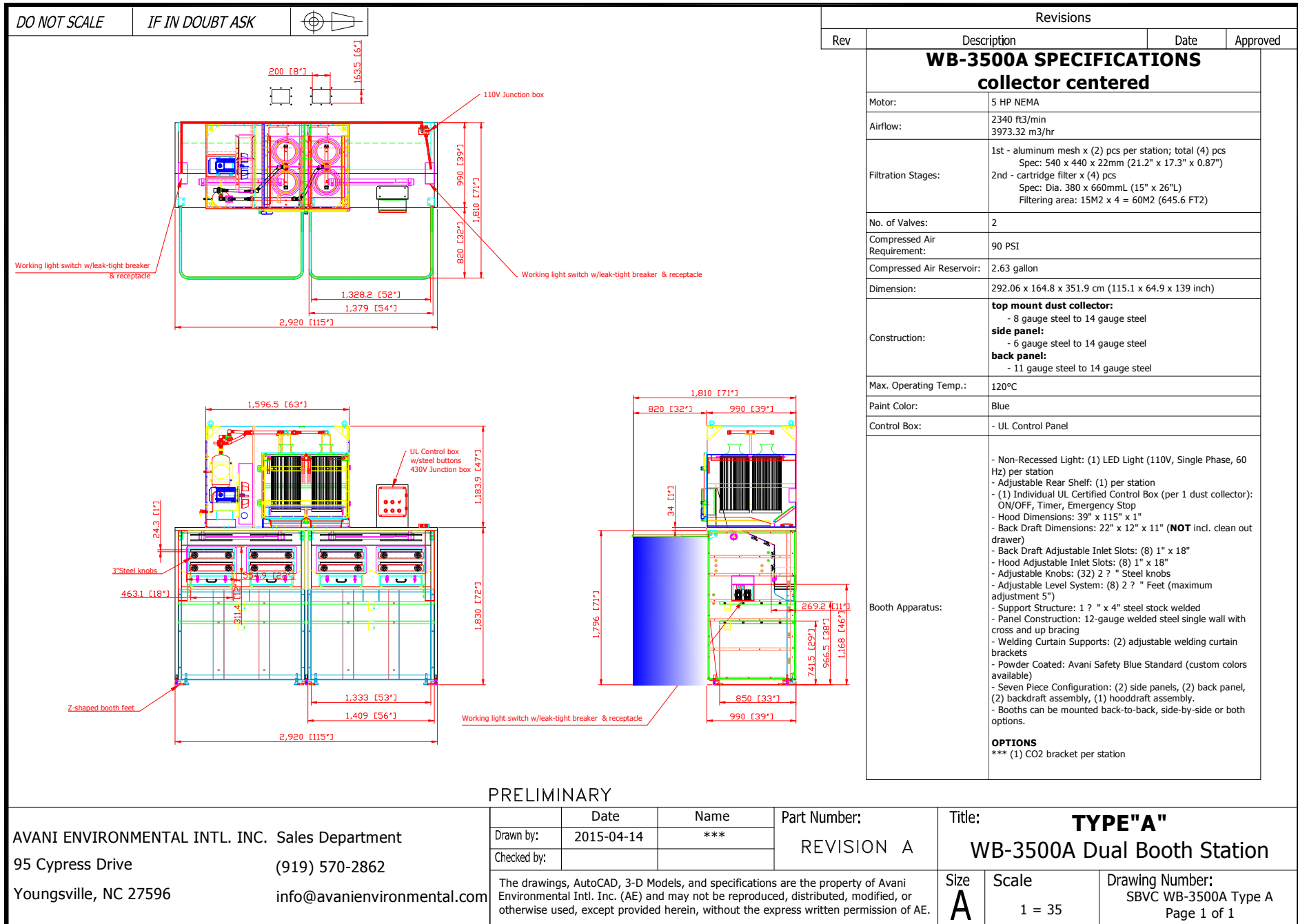
Attn:

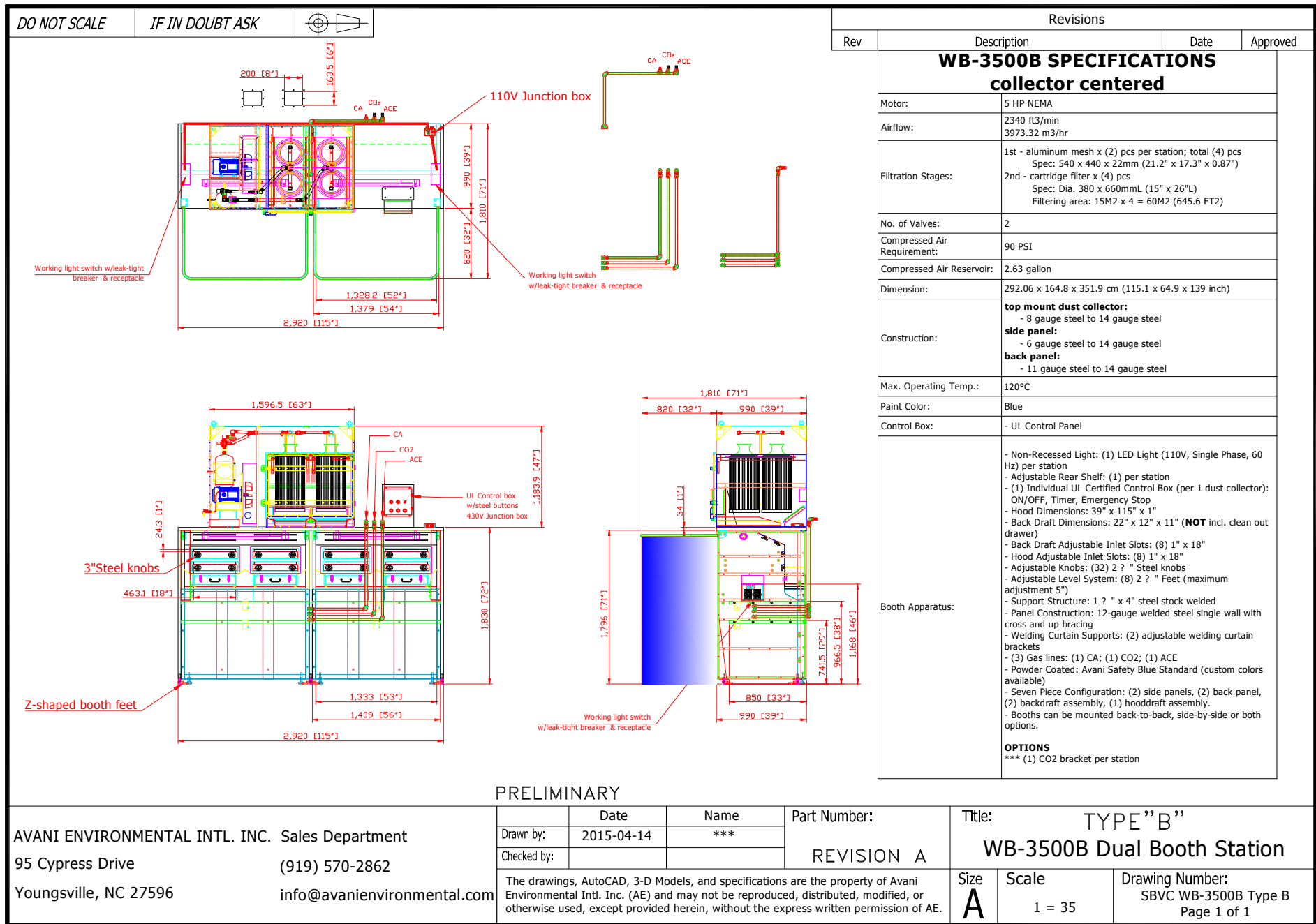
Recommended Equipment:

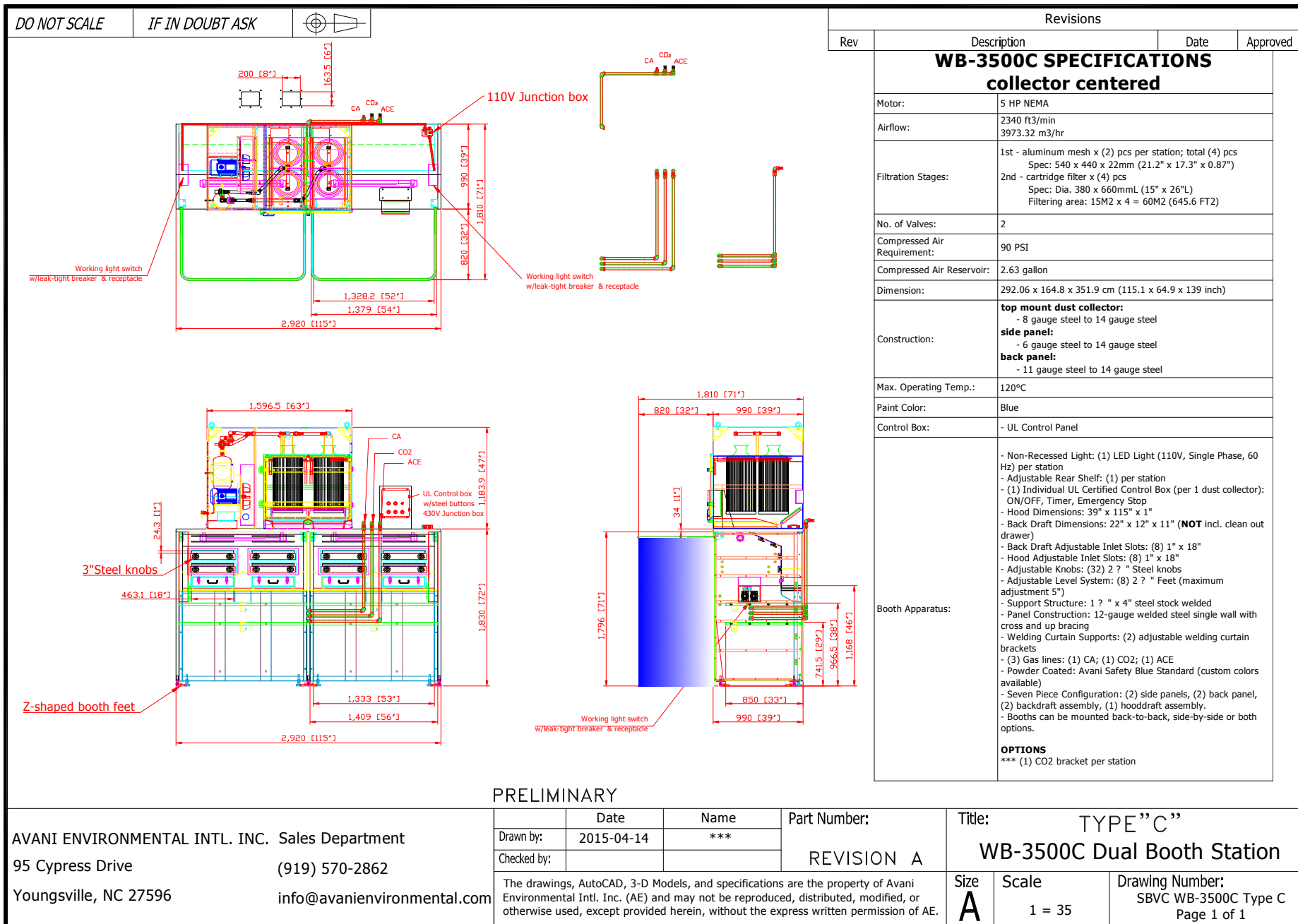
- (12) WB-3500A dual welding booth with centered collector
- (11) WB-3500B dual welding booth with centered collector
- (1) WB-3500C dual welding booth with centered collector
- (1) WB-3500CR dual welding booth with centered collector
- (1) WB-3500D single welding booth with centered collector
- (1) WB-3500DR single welding booth with centered collector
- (1) WB-3500E single welding booth with centered collector

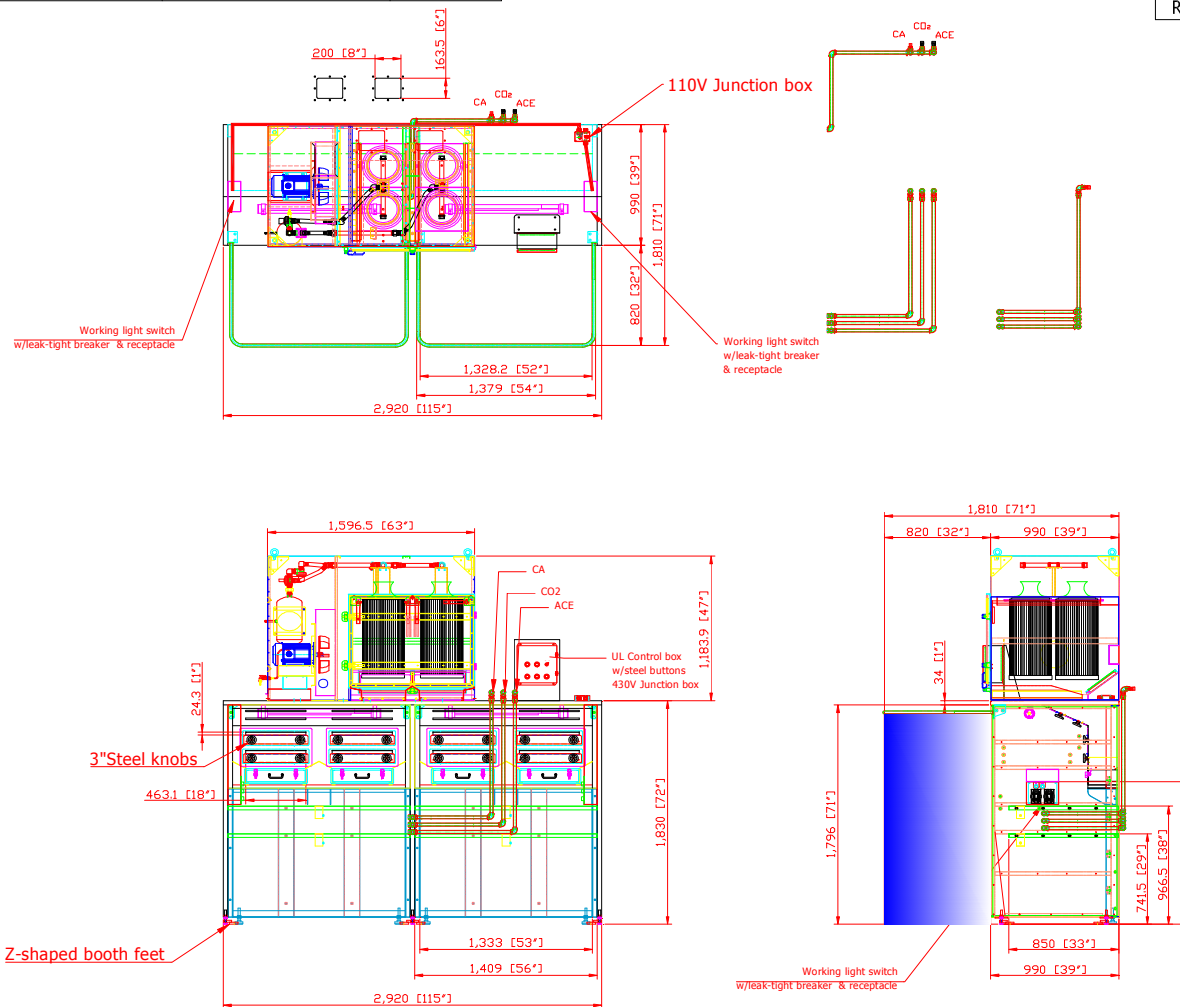
Avani Environmental Intl. Inc.
95 Cypress Drive
Youngsville, NC 27596
www.avanienvironmental.com

Phone: (919) 570-2862
Fax: (919) 570-2863
Email: info@avanienvironmental.com
www.weldingbooths.com



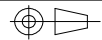






DO NOT SCALE

IF IN DOUBT ASK

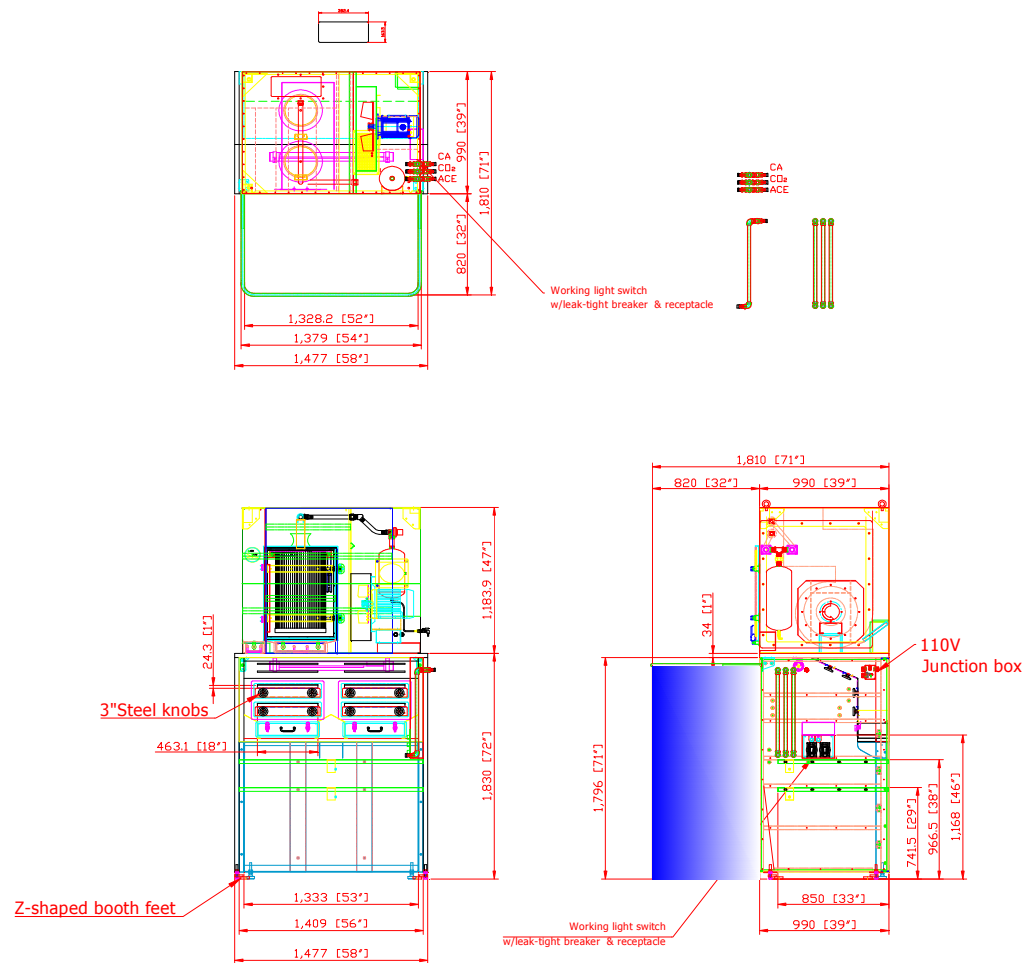


Revisions

Rev	Description	Date	Approved
-----	-------------	------	----------

WB-3500D SPECIFICATIONS

Motor:	3 HP NEMA
Airflow:	2340 ft ³ /min 3973.32 m ³ /hr
Filtration Stages:	1st - aluminum mesh x (2) pcs per station; total (4) pcs Spec: 540 x 440 x 22mm (21.2" x 17.3" x 0.87") 2nd - cartridge filter x (2) pcs Spec: Dia. 380 x 660mmL (15" x 26"L) Filtering area: 15M2 x 4 = 60M2 (645.6 FT2)
No. of Valves:	2
Compressed Air Requirement:	90 PSI
Compressed Air Reservoir:	2.63 gallon
Dimension:	292.06 x 164.8 x 351.9 cm (115.1 x 64.9 x 139 inch)
Construction:	top mount dust collector: - 8 gauge steel to 14 gauge steel side panel: - 6 gauge steel to 14 gauge steel back panel: - 11 gauge steel to 14 gauge steel
Max. Operating Temp.:	120°C
Paint Color:	Blue
Control Box:	- UL Control Panel
Booth Apparatus:	<ul style="list-style-type: none"> - Non-Recessed Light: (1) LED Light (110V, Single Phase, 60 Hz) - Adjustable Rear Shelf: (1) - (1) ON/OFF Switch w/Manual pulse jet - Hood Dimensions: 39" x 58" x 1" - Back Draft Dimensions: 22" x 12" x 11" (NOT incl. clean out drawer) - Back Draft Adjustable Inlet Slots: (4) 1" x 18" - Hood Adjustable Inlet Slots: (4) 1" x 18" - Adjustable Knobs: (16) 2 ? " Steel knobs - Adjustable Level System: (4) 2 ? " Feet (maximum adjustment 5") - Support Structure: 1 ? " x 4" steel stock welded - Panel Construction: 12-gauge welded steel single wall with cross and up bracing - Welding Curtain Supports: (2) adjustable welding curtain brackets - (3) Gas lines: (1) CA; (1) CO2; (1) ACE - Powder Coated: Avani Safety Blue Standard (custom colors available) - Five Piece Configuration: (2) side panels, (1) back panel, (1) backdraft assembly, (1) hooddraft assembly. - Booths can be mounted back-to-back, side-by-side or both options. <p>OPTIONS *** (1) CO2 bracket per station</p>



PRELIMINARY

AVANI ENVIRONMENTAL INTL. INC. Sales Department
95 Cypress Drive
Youngsville, NC 27596

(919) 570-2862

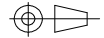
info@avanienvironmental.com

Date	Name	Part Number:	Title:
2015-04-14	***	REVISION A	TYPE "D" WB-3500D Dual Booth Station
Drawn by:	Checked by:	Size	Scale
		A	1 = 35
The drawings, AutoCAD, 3-D Models, and specifications are the property of Avani Environmental Intl. Inc. (AE) and may not be reproduced, distributed, modified, or otherwise used, except provided herein, without the express written permission of AE.		Drawing Number:	SBVC WB-3500D Type D Page 1 of 1

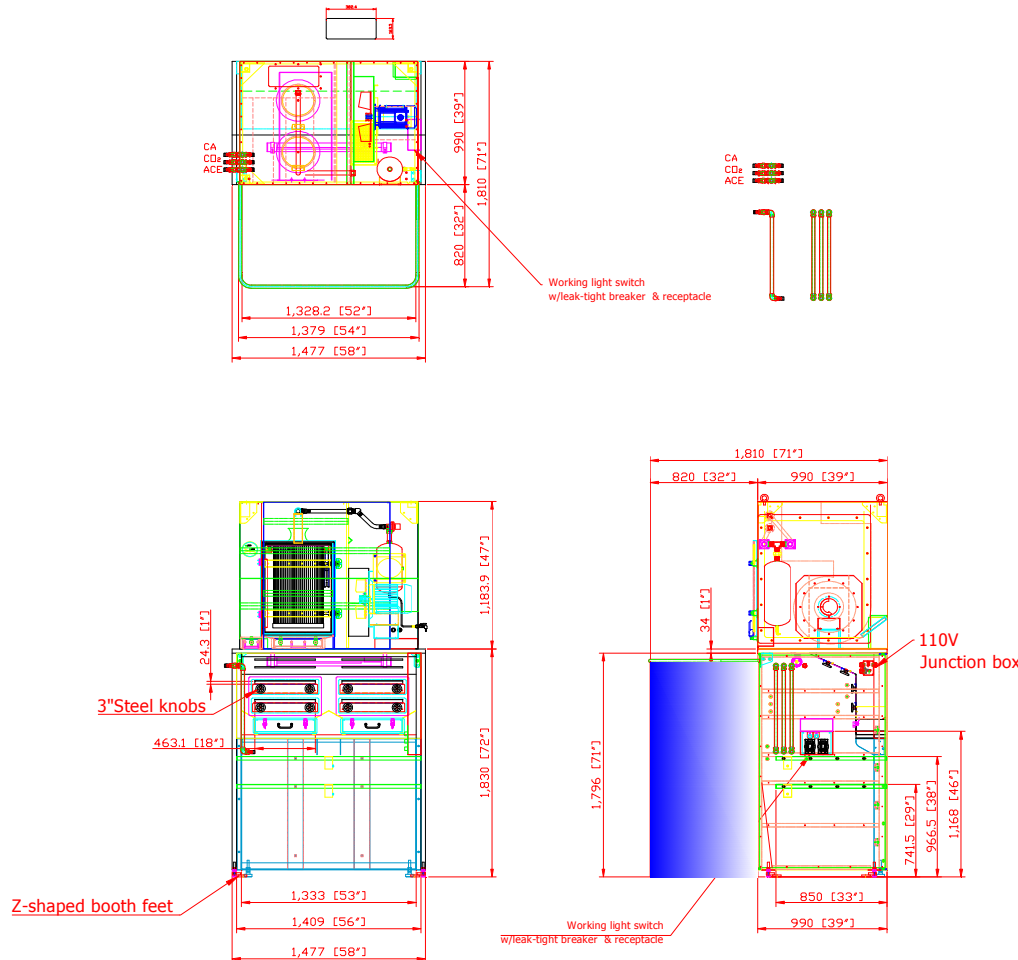
2015/5/12

SBVC REVISION B

6



Revisions			
Rev	Description	Date	Approved
WB-3500DR SPECIFICATIONS			
Motor:	3 HP NEMA		
Airflow:	2340 ft ³ /min 3973.32 m ³ /hr		
Filtration Stages:	1st - aluminum mesh x (2) pcs per station; total (4) pcs Spec: 540 x 440 x 22mm (21.2" x 17.3" x 0.87") 2nd - cartridge filter x (2) pcs Spec: Dia. 380 x 660mmL (15" x 26"L) Filtering area: 15M2 x 4 = 60M2 (645.6 FT2)		
No. of Valves:	2		
Compressed Air Requirement:	90 PSI		
Compressed Air Reservoir:	2.63 gallon		
Dimension:	292.06 x 164.8 x 351.9 cm (115.1 x 64.9 x 139 inch)		
Construction:	top mount dust collector: - 8 gauge steel to 14 gauge steel side panel: - 6 gauge steel to 14 gauge steel back panel: - 11 gauge steel to 14 gauge steel		
Max. Operating Temp.:	120°C		
Paint Color:	Blue		
Control Box:	- UL Control Panel		
Booth Apparatus:	<ul style="list-style-type: none"> - Non-Recessed Light: (1) LED Light (110V, Single Phase, 60 Hz) - Adjustable Rear Shelf: (1) - (1) ON/OFF Switch, w/Manual pulse jet - Hood Dimensions: 39" x 58" x 1" - Back Draft Dimensions: 22" x 12" x 11" (NOT incl. clean out drawer) - Back Draft Adjustable Inlet Slots: (4) 1" x 18" - Hood Adjustable Inlet Slots: (4) 1" x 18" - Adjustable Knobs: (16) 2" Steel knobs - Adjustable Level System: (4) 2" Feet (maximum adjustment 5") - Support Structure: 1" x 4" steel stock welded - Panel Construction: 12-gauge welded steel single wall with cross and up bracing - Welding Curtain Supports: (2) adjustable welding curtain brackets - (3) Gas lines: (1) CA; (1) CO2; (1) ACE - Powder Coated: Avani Safety Blue Standard (custom colors available) - Five Piece Configuration: (2) side panels, (1) back panel, (1) backdraft assembly, (1) hooddraft assembly. - Booths can be mounted back-to-back, side-by-side or both options. <p>OPTIONS *** (1) CO2 bracket per station</p>		

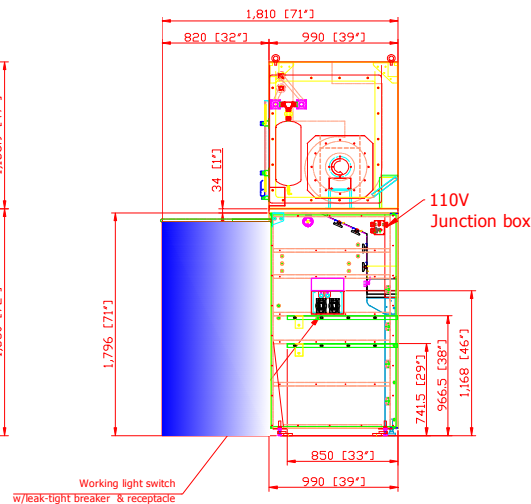
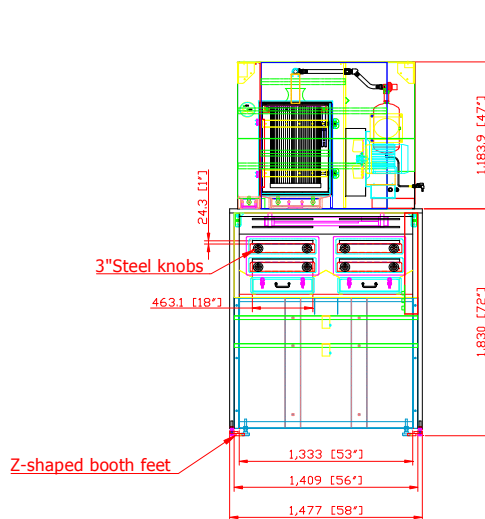
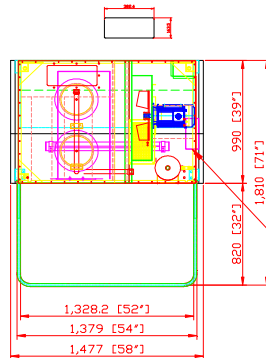
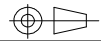


PRELIMINARY

AVANI ENVIRONMENTAL INTL. INC. Sales Department 95 Cypress Drive Youngsville, NC 27596 info@avanienvironmental.com		Date	Name	Part Number:	Title: TYPE”DR”		
	Drawn by:	2015-04-14	***	REVISION A	WB-3500DR Dual Booth Station		
	Checked by:				Size A	Scale 1 = 35	Drawing Number: SBVC WB-3500DR Type DR Page 1 of 1
	The drawings, AutoCAD, 3-D Models, and specifications are the property of Avani Environmental Intl. Inc. (AE) and may not be reproduced, distributed, modified, or otherwise used, except provided herein, without the express written permission of AE.						

DO NOT SCALE

IF IN DOUBT ASK



PRELIMINARY

Revisions

Rev	Description	Date	Approved
WB-3500E SPECIFICATIONS			
Motor:	3 HP NEMA		
Airflow:	2340 ft3/min 3973.32 m3/hr		
Filtration Stages:	1st - aluminum mesh x (2) pcs per station; total (4) pcs Spec: 540 x 440 x 22mm (21.2" x 17.3" x 0.87") 2nd - cartridge filter x (2) pcs Spec: Dia. 380 x 660mmL (15" x 26"L) Filtering area: 15M2 x 4 = 60M2 (645.6 FT2)		
No. of Valves:	2		
Compressed Air Requirement:	90 PSI		
Compressed Air Reservoir:	2.63 gallon		
Dimension:	292.06 x 164.8 x 351.9 cm (115.1 x 64.9 x 139 inch)		
Construction:	top mount dust collector: - 8 gauge steel to 14 gauge steel side panel: - 6 gauge steel to 14 gauge steel back panel: - 11 gauge steel to 14 gauge steel		
Max. Operating Temp.:	120°C		
Paint Color:	Blue		
Control Box:	- UL Control Panel		
Booth Apparatus:	<ul style="list-style-type: none">- Non-Recessed Light: (1) LED Light (110V, Single Phase, 60 Hz)- Adjustable Rear Shelf: (1)- (1) ON/OFF Switch, w/Manual pulse jet- Hood Dimensions: 39" x 58" x 1"- Back Draft Dimensions: 22" x 12" x 11" (NOT incl. clean out drawer)- Back Draft Adjustable Inlet Slots: (4) 1" x 18"- Hood Adjustable Inlet Slots: (4) 1" x 18"- Adjustable Knobs: (16) 2 ? " Steel knobs- Adjustable Level System: (4) 2 ? " Feet (maximum adjustment 5")- Support Structure: 1 ? " x 4" steel stock welded- Panel Construction: 12-gauge welded steel single wall with cross and up bracing- Welding Curtain Supports: (2) adjustable welding curtain brackets- Powder Coated: Avani Safety Blue Standard (custom colors available)- Five Piece Configuration: (2) side panels, (1) back panel, (1) backdraft assembly, (1) hooddraft assembly.- Booths can be mounted back-to-back, side-by-side or both options. OPTIONS *** (1) CO2 bracket per station		

AVANI ENVIRONMENTAL INTL. INC. Sales Department

95 Cypress Drive

Youngsville, NC 27596

(919) 570-2862

info@avanienvironmental.com

	Date	Name	Part Number: REVISION A
Drawn by:	2015-04-14	***	
Checked by:			
The drawings, AutoCAD, 3-D Models, and specifications are the property of Avani Environmental Intl. Inc. (AE) and may not be reproduced, distributed, modified, or otherwise used, except provided herein, without the express written permission of AE.			

Title: TYPE "E"
WB-3500E Dual Booth Station

Size A	Scale 1 = 35	Drawing Number: SBVC WB-3500E Type E Page 1 of 1
------------------	-----------------	--

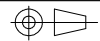
2015/5/12

SBVC REVISION B

8

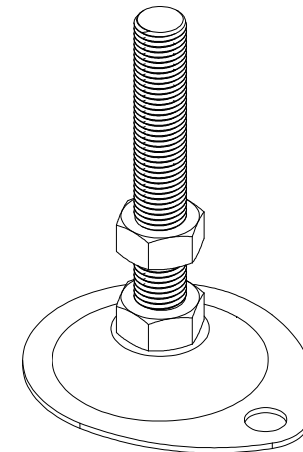
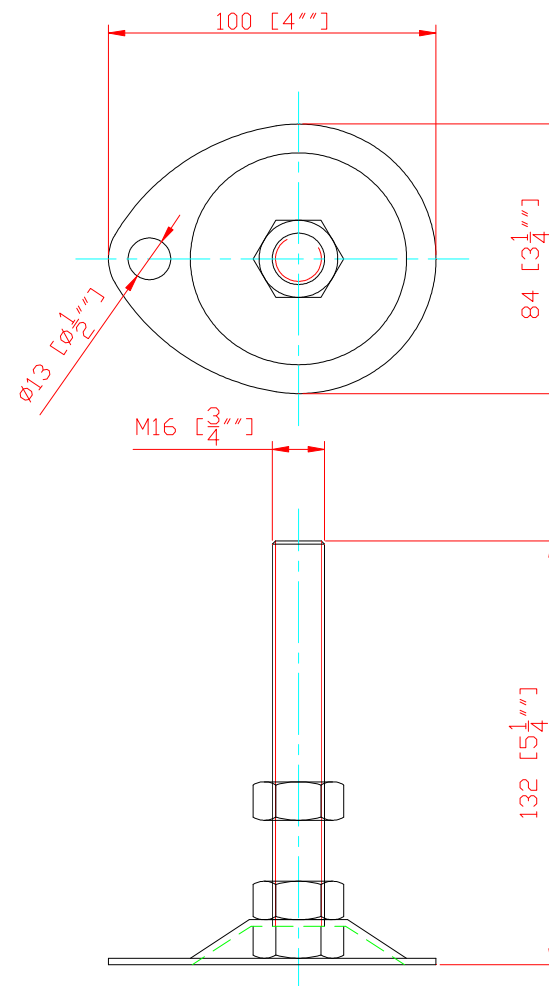
DO NOT SCALE

IF IN DOUBT ASK



Revisions

Rev	Description	Date	Approved
-----	-------------	------	----------



AVANI ENVIRONMENTAL INTL. INC.
95 Cypress Drive
Youngsville, NC 27596

Sales Department
(919) 570-2862

info@avanienvironmental.com

Drawn by:
Checked by:

Date
2015-04-14

Name

Part Number:

REVISION A

Title:

TEARDROP BOOTH FEET

The drawings, AutoCAD, 3-D Models, and specifications are the property of Avani Environmental Intl. Inc. (AE) and may not be reproduced, distributed, modified, or otherwise used, except provided herein, without the express written permission of AE.

Size
A

Scale
1 = 2

Drawing Number:

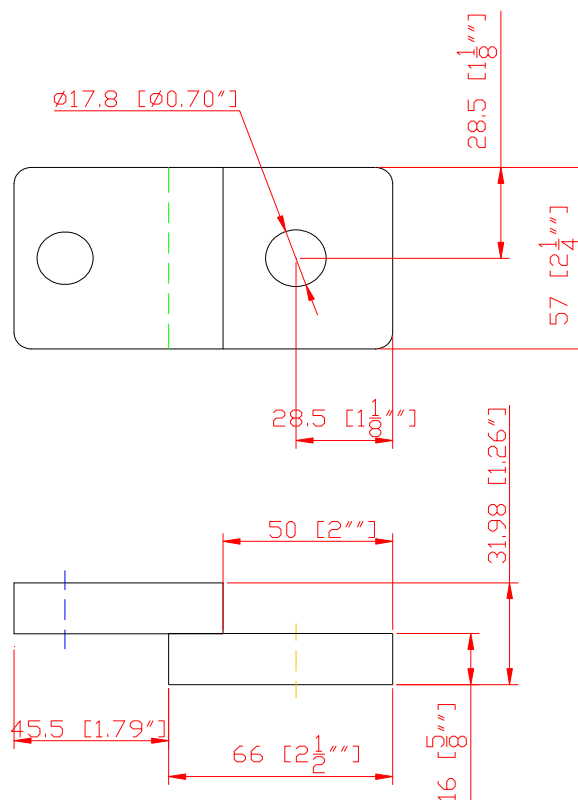
SBVC WB-3500

2015/5/12

SBVC REVISION B

9

Rev	Description	Date	Approved
-----	-------------	------	----------



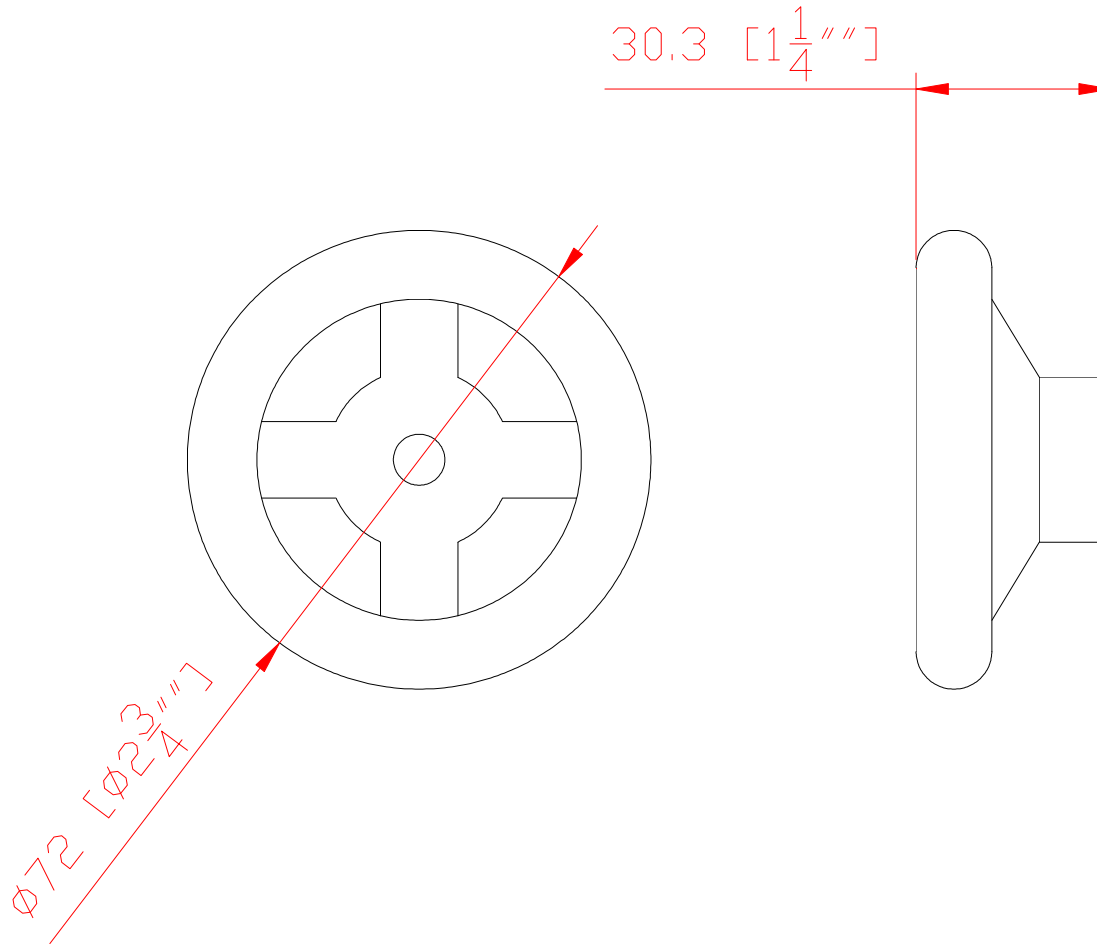
DO NOT SCALE

IF IN DOUBT ASK



Revisions

Rev	Description	Date	Approved
-----	-------------	------	----------



PRELIMINARY

AVANI ENVIRONMENTAL INTL. INC.
95 Cypress Drive
Youngsville, NC 27596

Sales Department
(919) 570-2862

info@avanienvironmental.com

	Date	Name	Part Number:	Title:
Drawn by:	2015-04-14	***	REVISION A	STEEL KNOB
Checked by:				
The drawings, AutoCAD, 3-D Models, and specifications are the property of Avani Environmental Intl. Inc. (AE) and may not be reproduced, distributed, modified, or otherwise used, except provided herein, without the express written permission of AE.			Size A	Scale 1 = 2
				Drawing Number: SBVC WB-3500

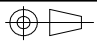
2015/5/12

SBVC REVISION B

11

DO NOT SCALE

IF IN DOUBT ASK



Revisions			
Rev	Description	Date	Approved

TYPE "A"

TYPE "A"

TYPE "A"

TYPE "A"

TYPE "A"

TYPE "A"

TYPE "A"

TYPE "A"

TYPE "A"

TYPE "A"

TYPE "A"

TYPE "A"

TYPE "A"

TYPE "A"

TYPE "A"

TYPE "A"

TYPE "A"

TYPE "A"

TYPE "A"

TYPE "A"

TYPE "A"

TYPE "A"

TYPE "B"

TYPE "B"

TYPE "B"

TYPE "B"

TYPE "B"

TYPE "B"

TYPE "B"

TYPE "B"

TYPE "C"

TYPE "C"

TYPE "C"

TYPE "C"

TYPE "B"

TYPE "B"

TYPE "B"

TYPE "B"

TYPE "C"

TYPE "C"

TYPE "C"

TYPE "C"

TYPE "B"

TYPE "B"

TYPE "B"

TYPE "B"

TYPE "B"

TYPE "B"

TYPE "B"

TYPE "B"

TYPE "B"

TYPE "B"

TYPE "B"

TYPE "B"

TYPE "A"

TYPE "A"

TYPE "A"

TYPE "A"

TYPE "A"

TYPE "A"

TYPE "A"

TYPE "A"

PRELIMINARY

AVANI ENVIRONMENTAL INTL. INC. Sales Department

95 Cypress Drive

Youngsville, NC 27596

(919) 570-2862

info@avanienvironmental.com

Drawn by:

2015-05-12

Checked by:

Date

2015-05-12

Name

Part Number:

REVISION A

Title:

SBVC Layout

The drawings, AutoCAD, 3-D Models, and specifications are the property of Avani Environmental Intl. Inc. (AE) and may not be reproduced, distributed, modified, or otherwise used, except provided herein, without the express written permission of AE.

Size

B

Scale

1 = 35

Drawing Number:

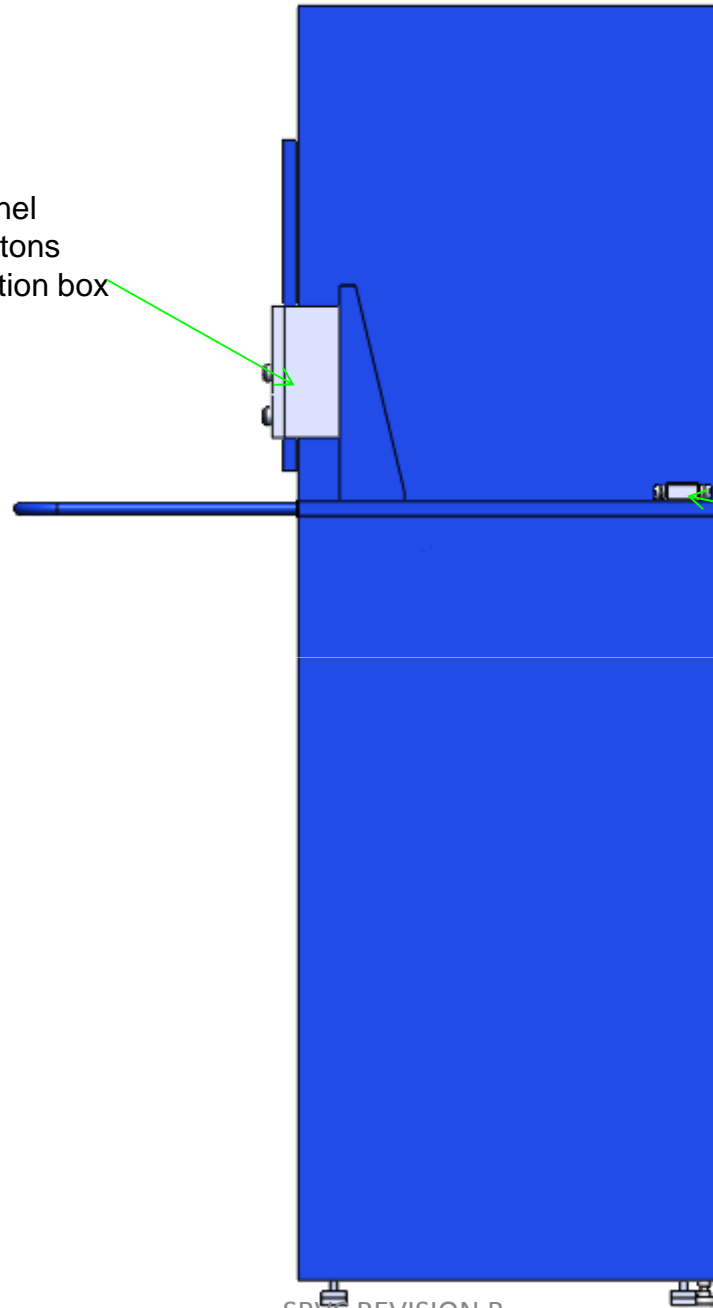
SBVC Layout

Page 1 of 1

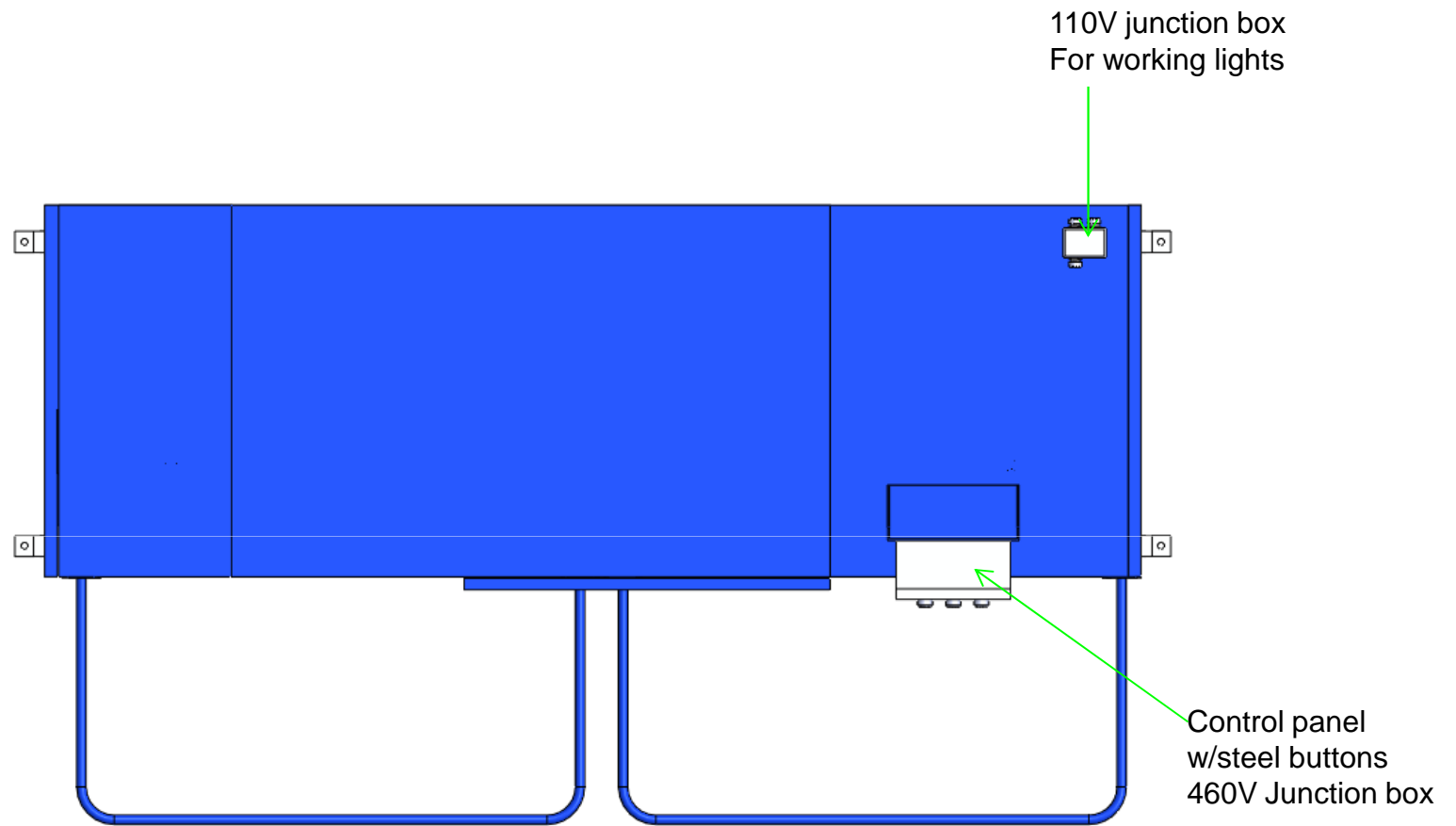
Type A
WB-3500A



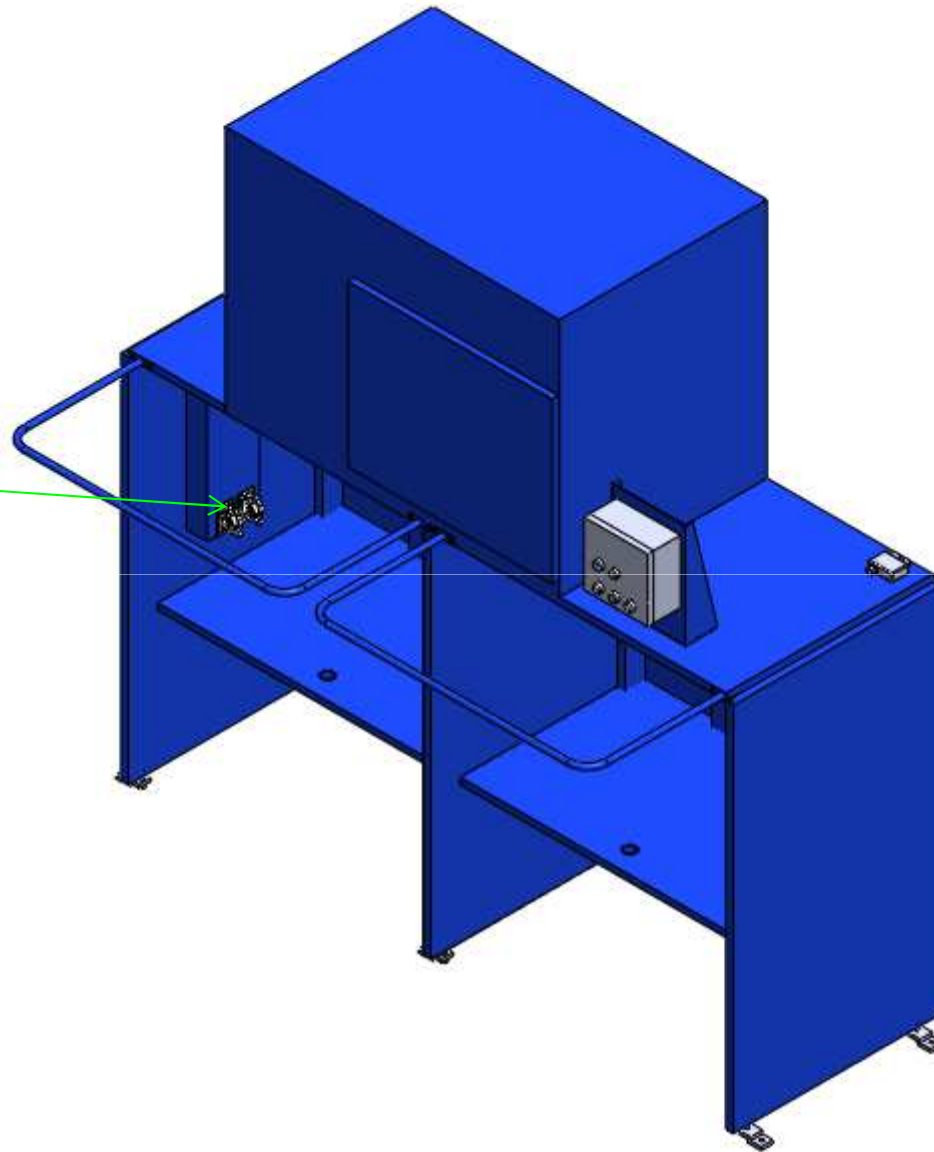
Control panel
w/steel buttons
460V Junction box

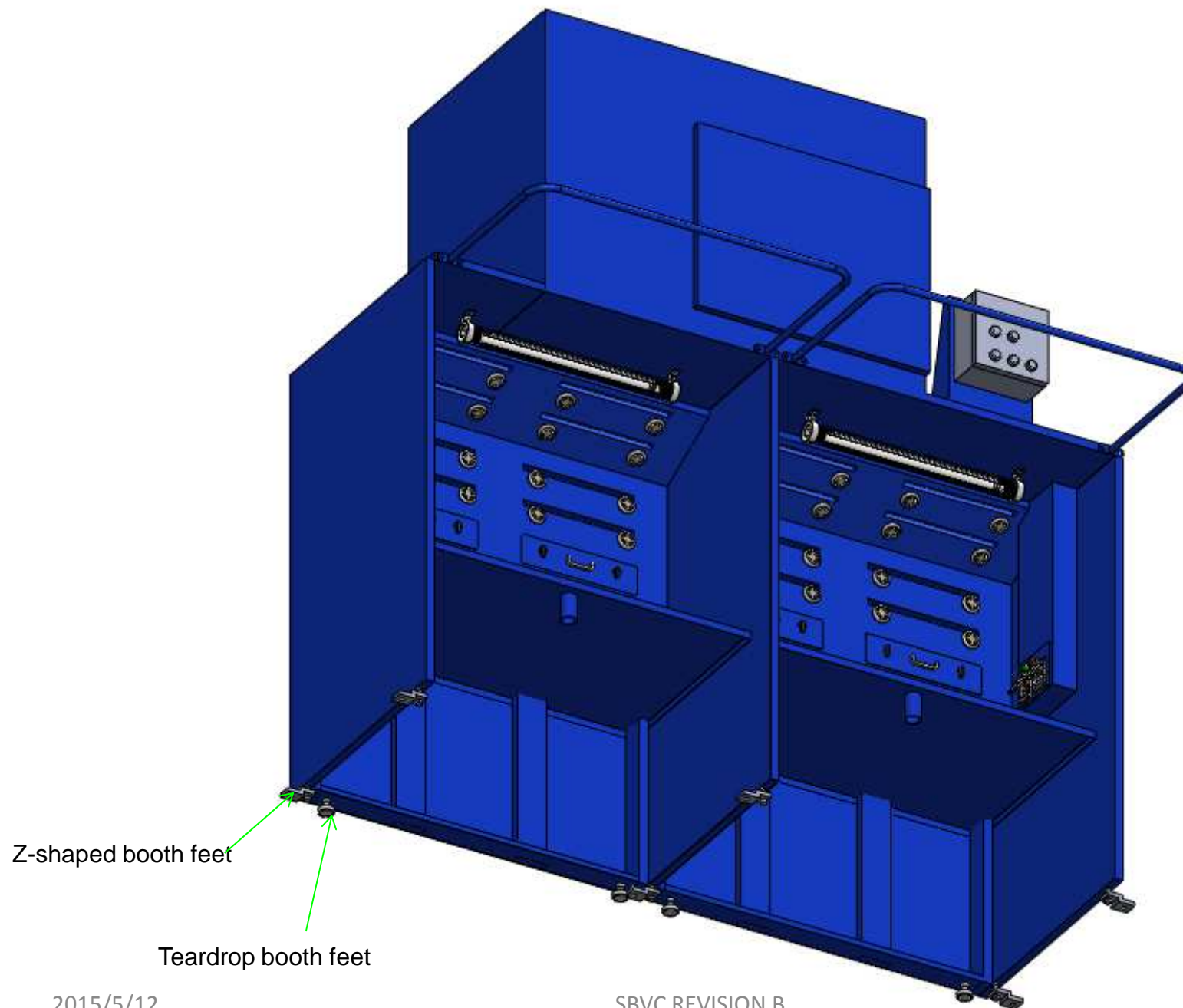


110V junction box
For working lights



Light switch
w/leak-tight breaker
& outlet





Z-shaped booth feet

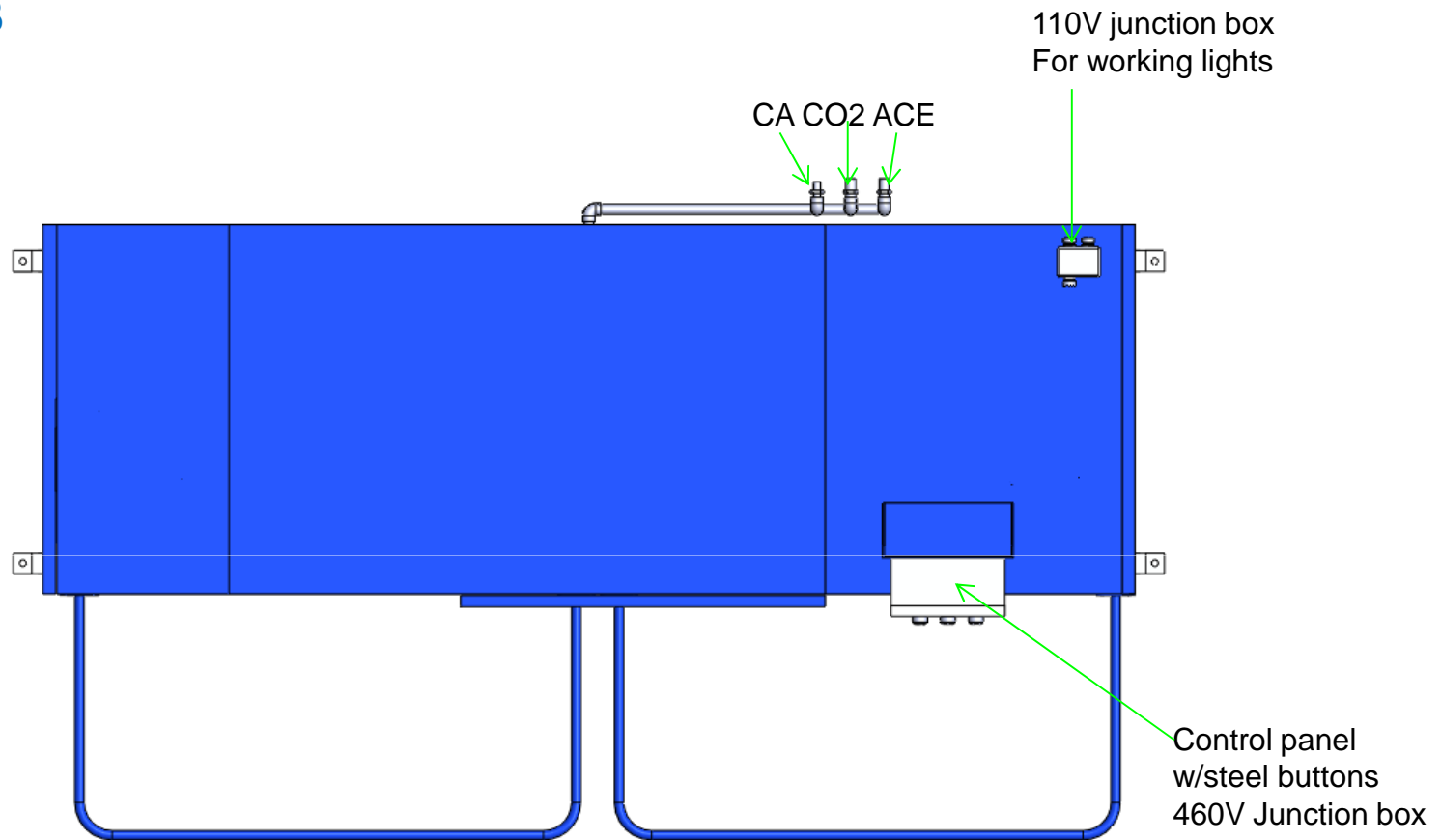
Teardrop booth feet

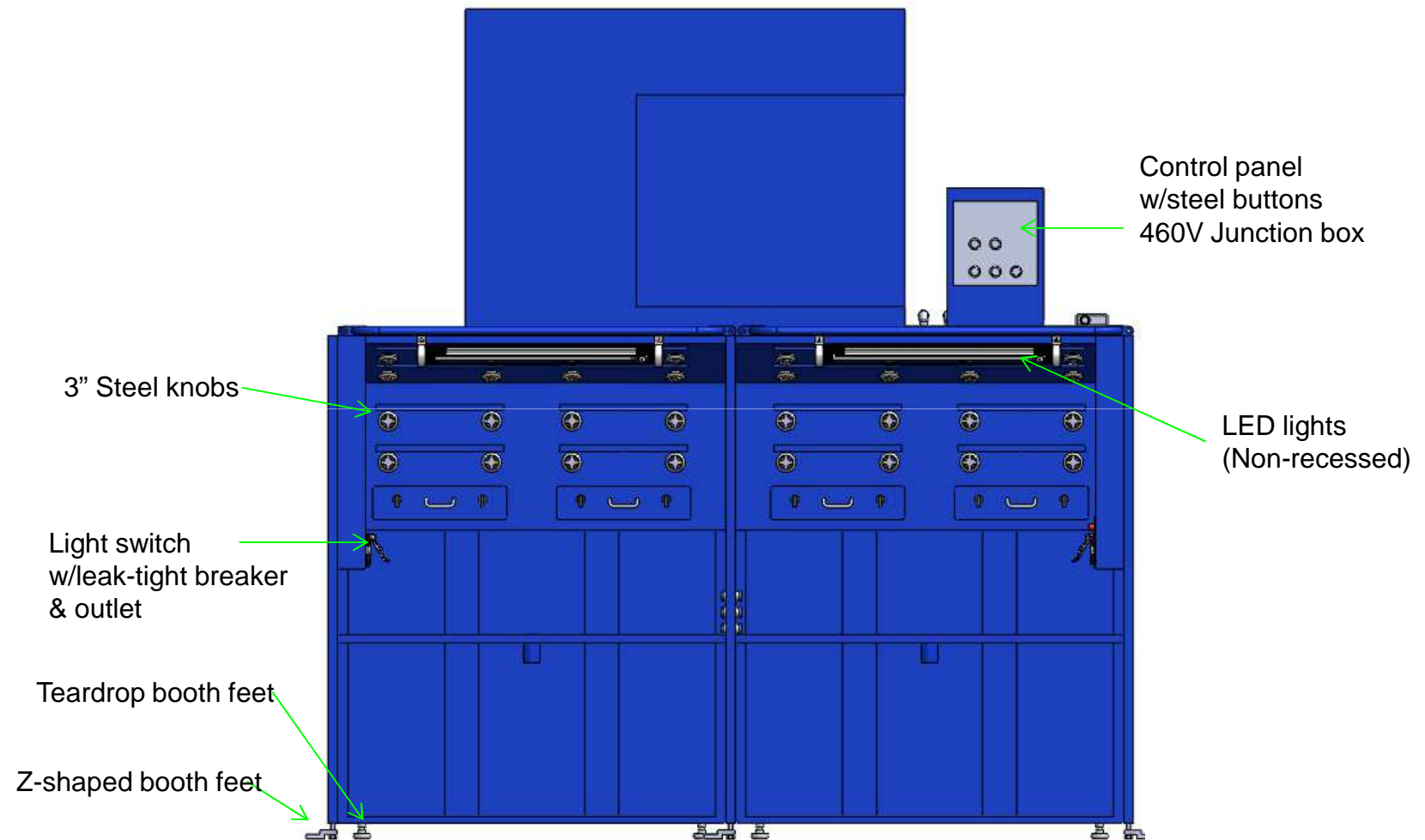
2015/5/12

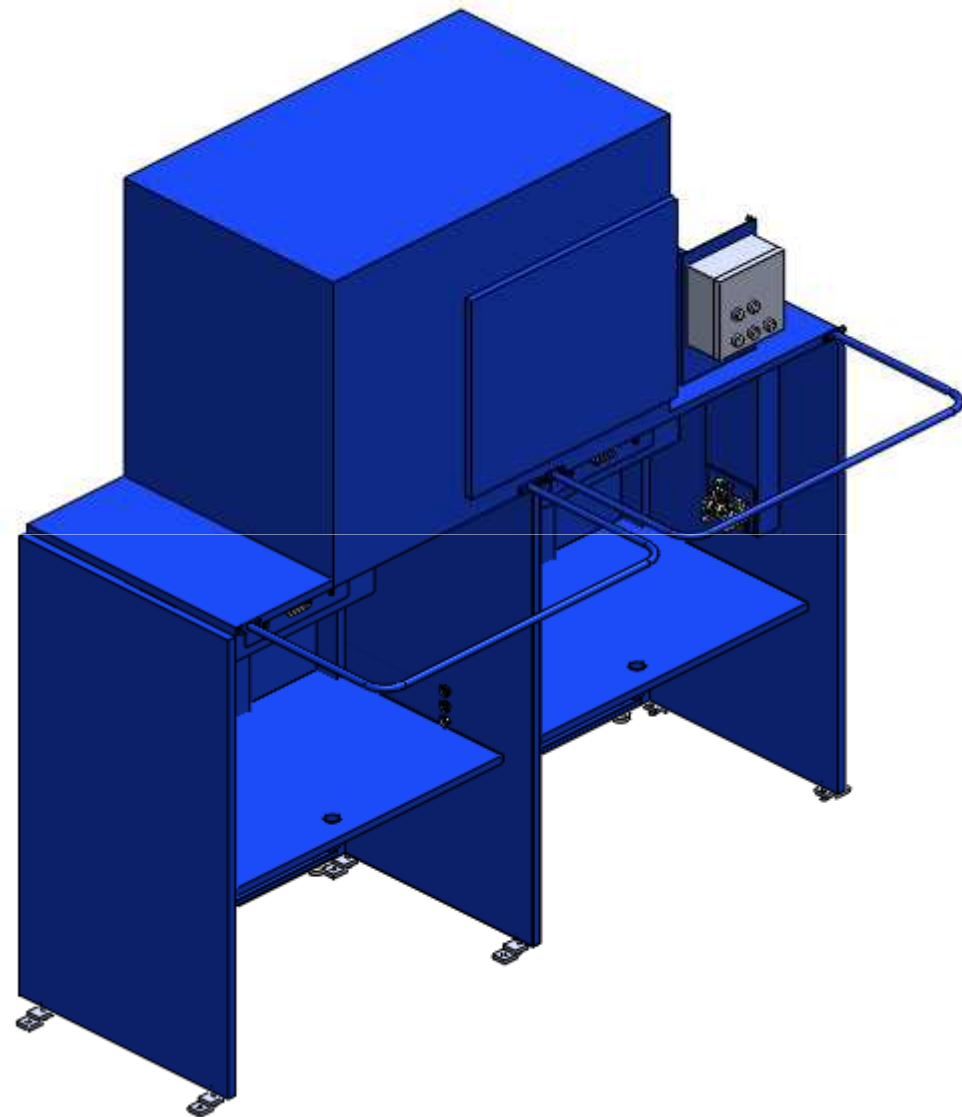
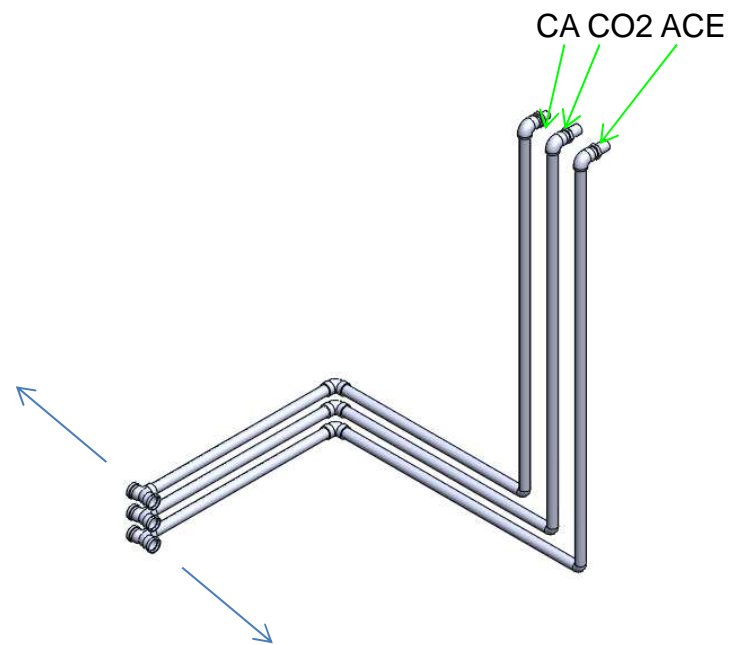
SBVC REVISION B

17

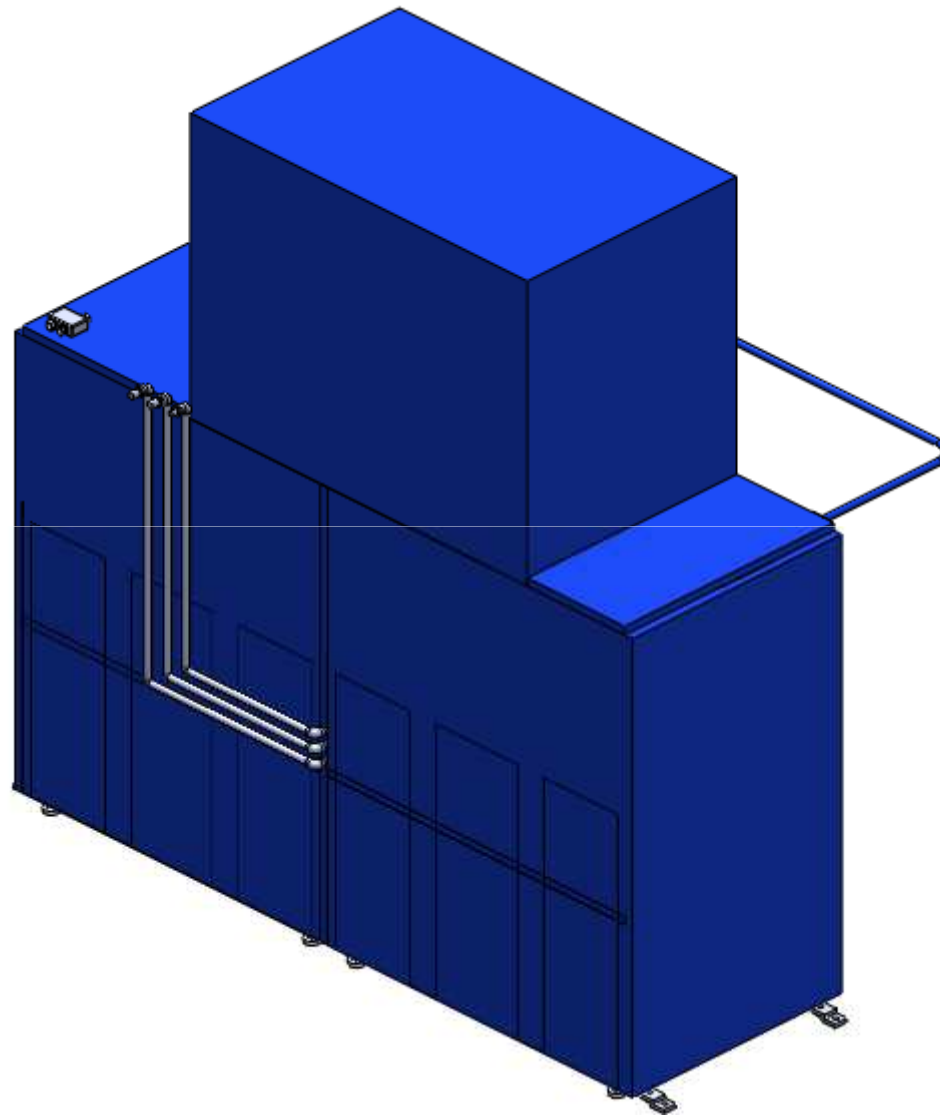
Type B
WB-3500B



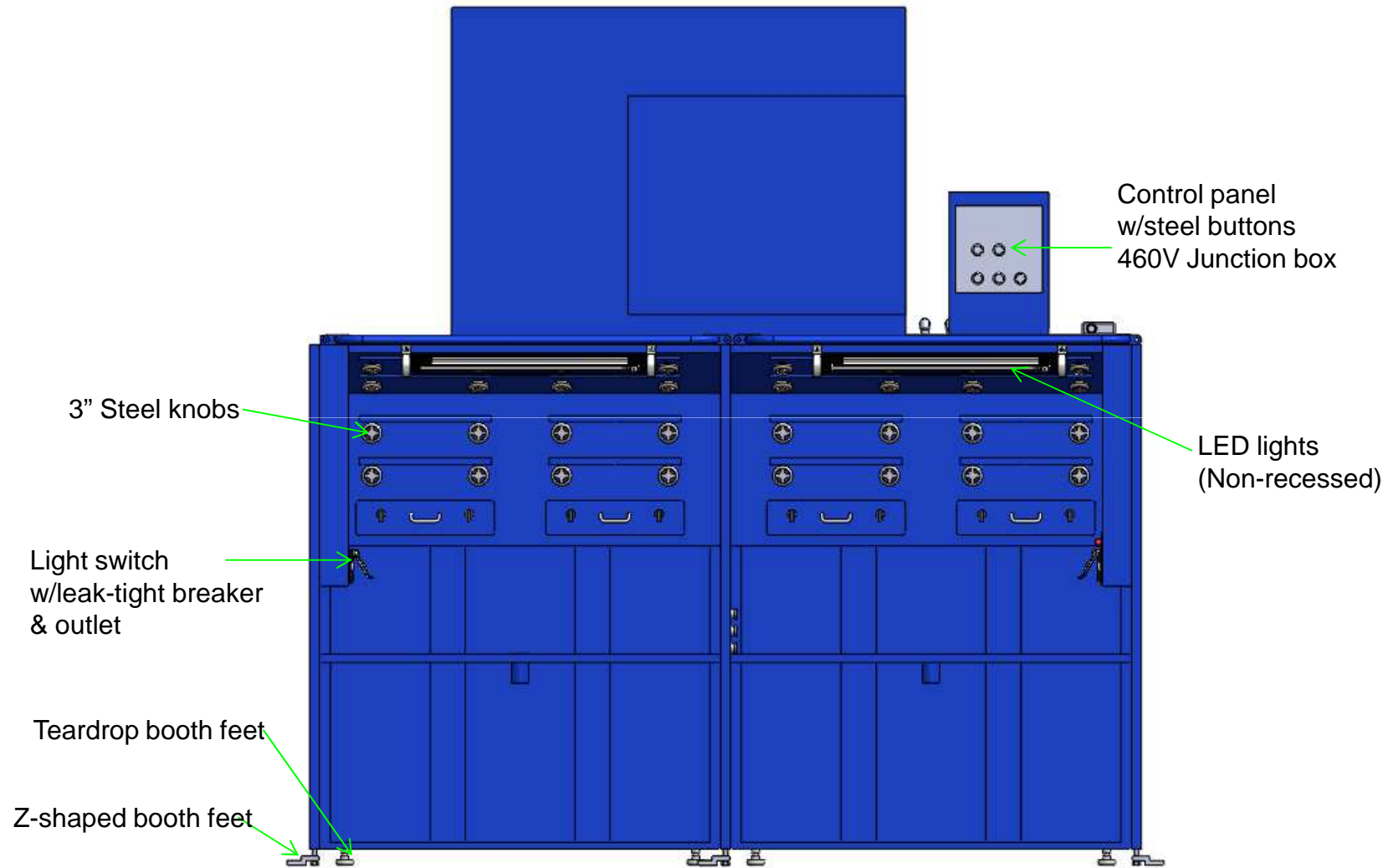


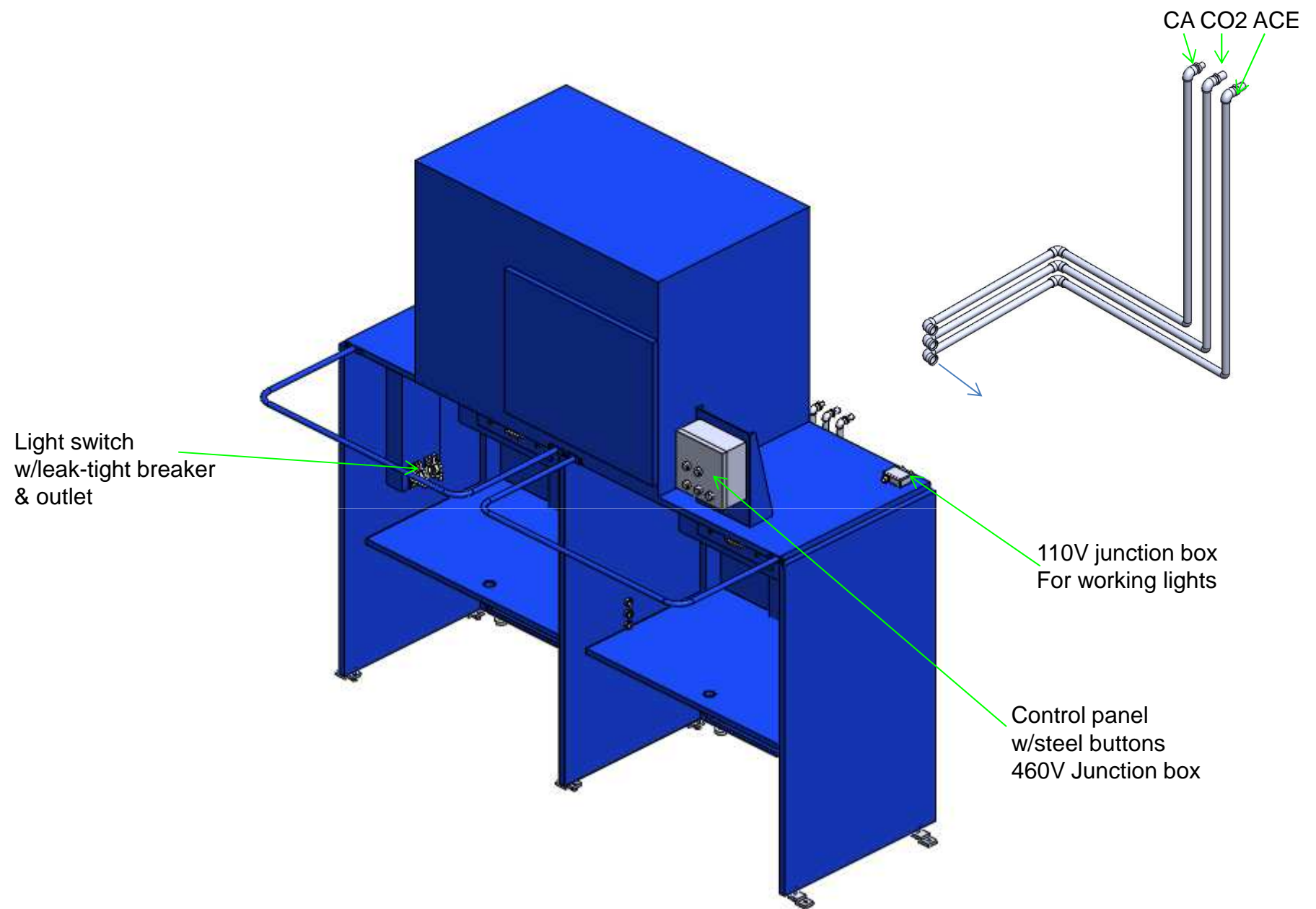




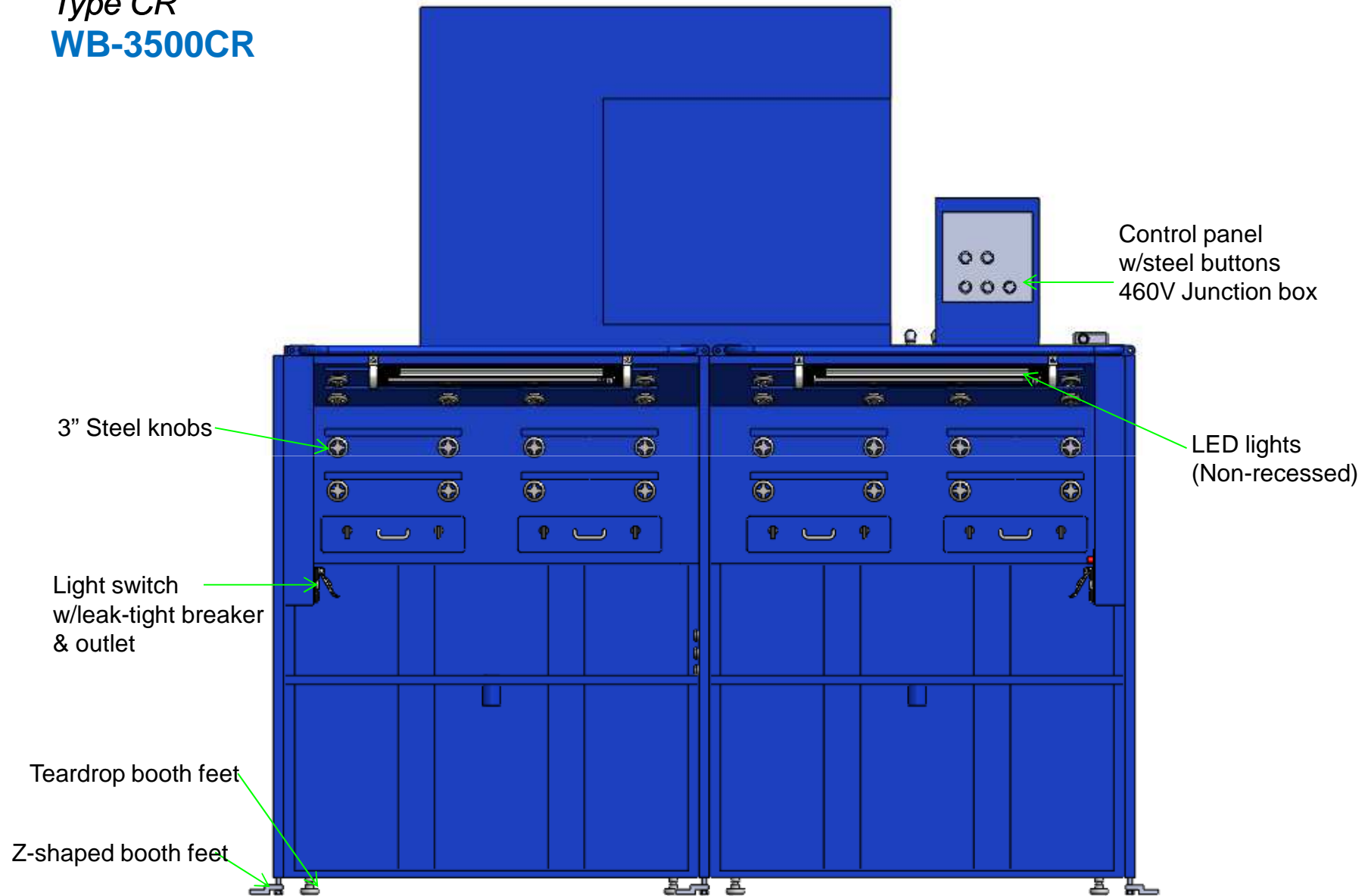


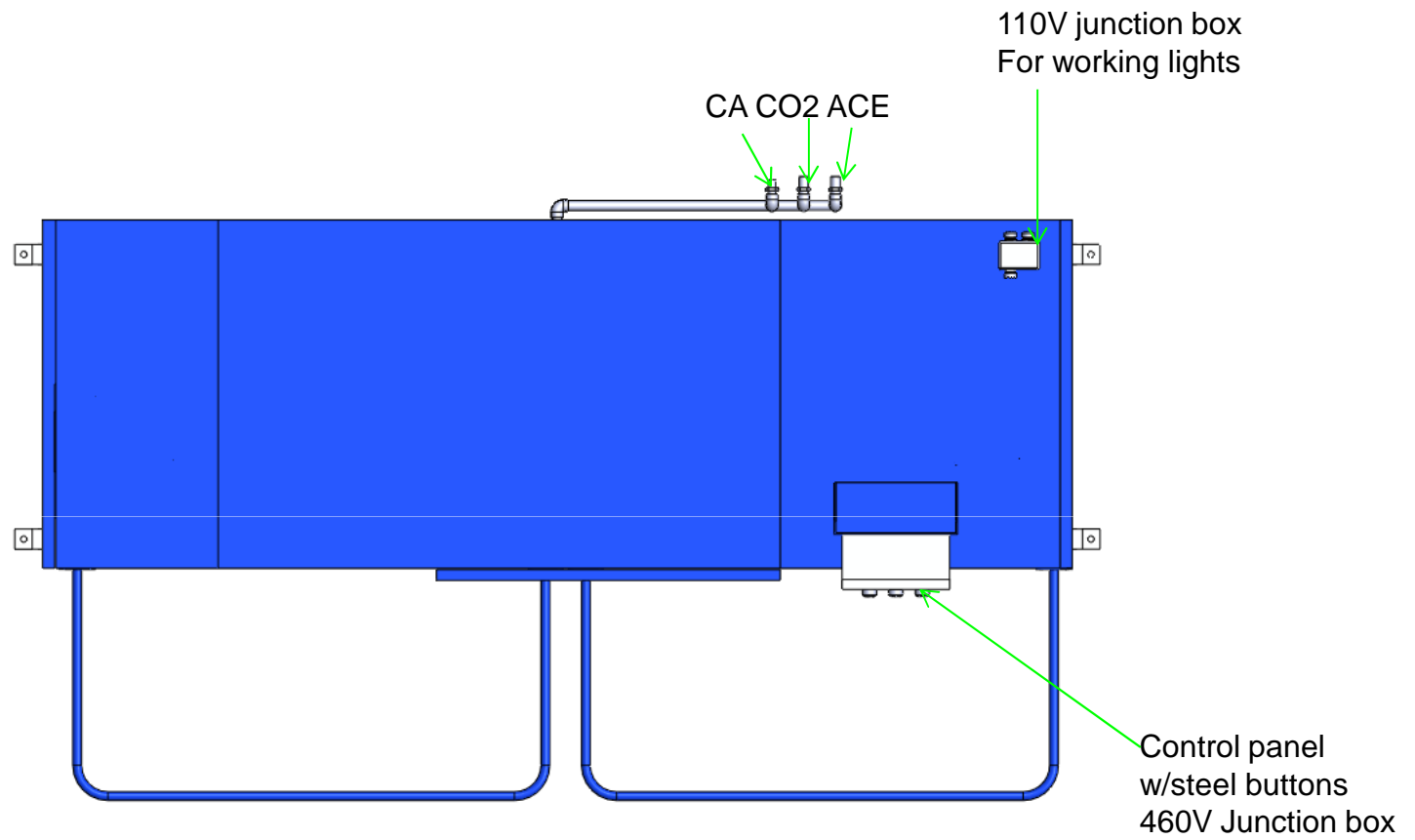
Type C
WB-3500C





Type CR
WB-3500CR

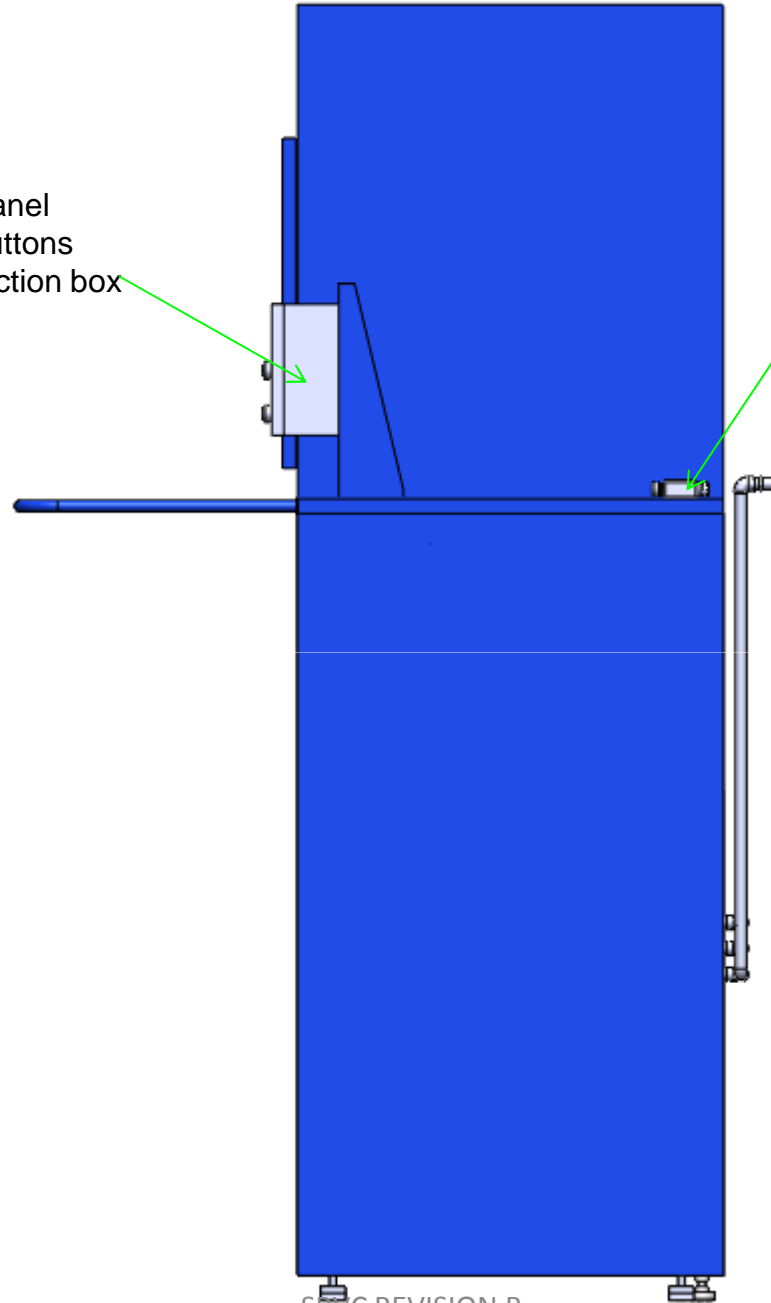


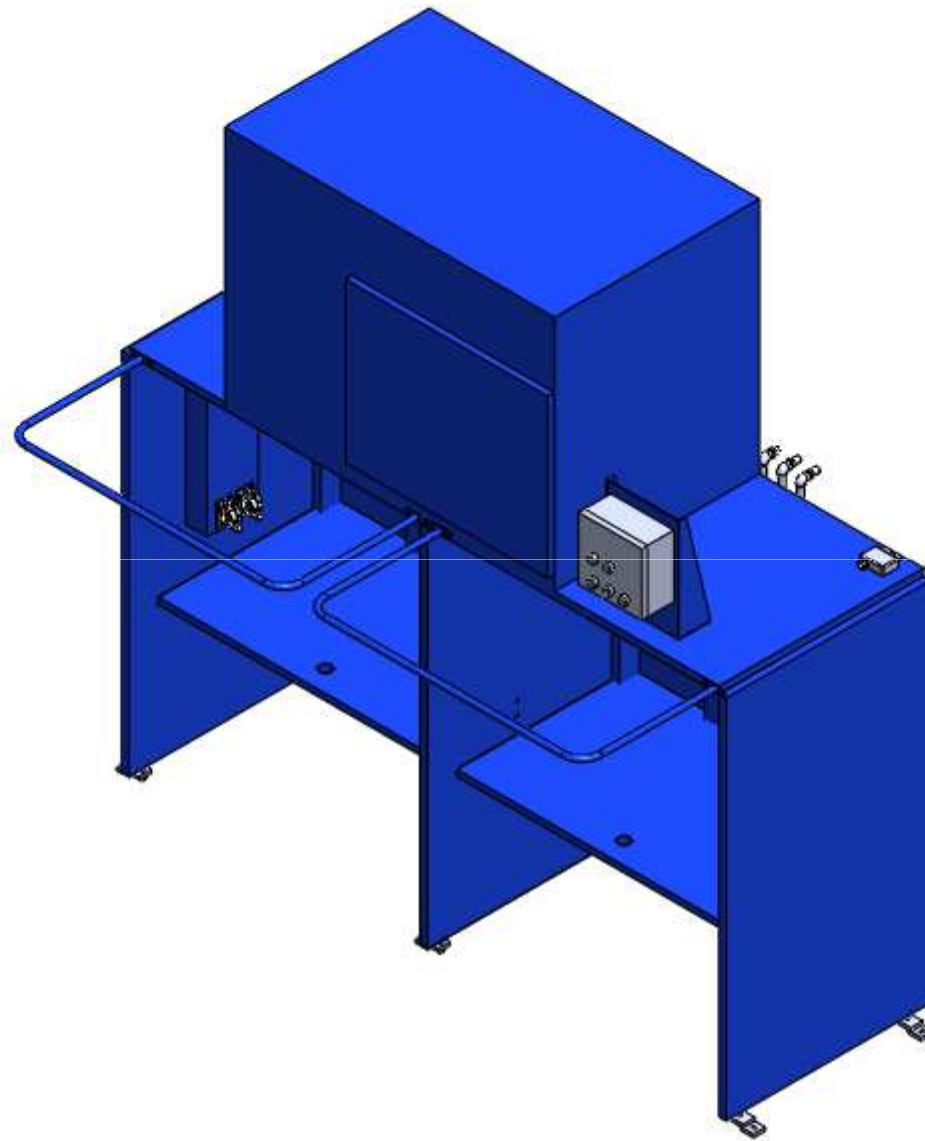


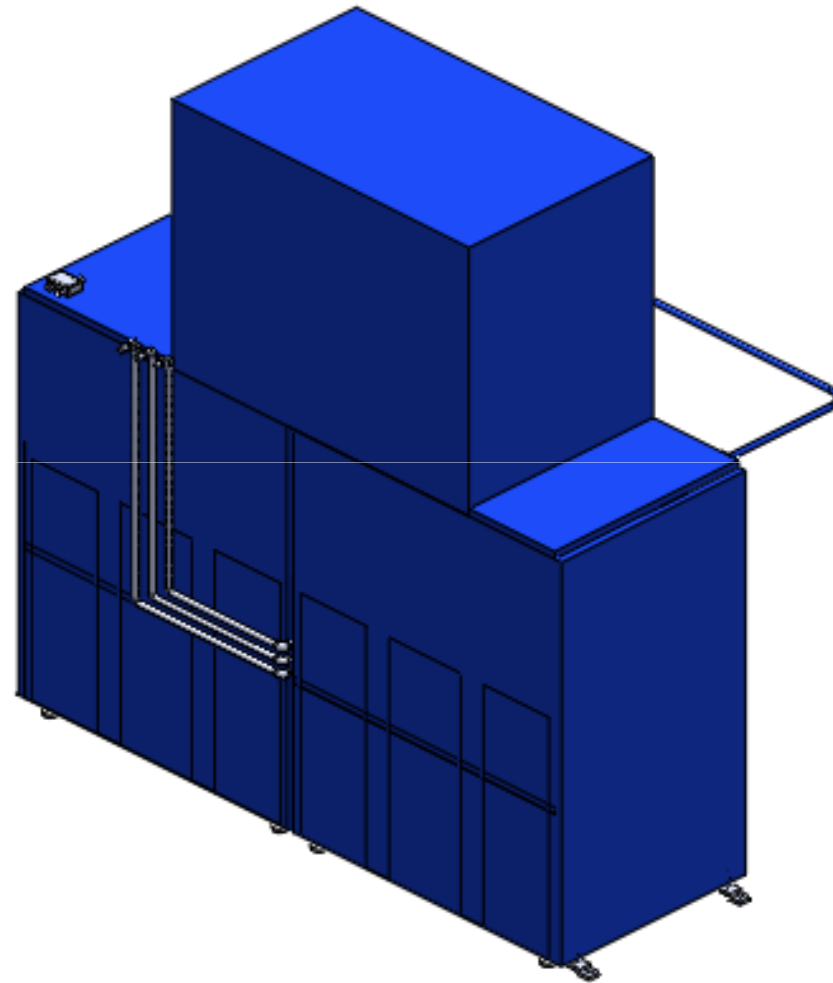
Control panel
w/steel buttons
460V Junction box

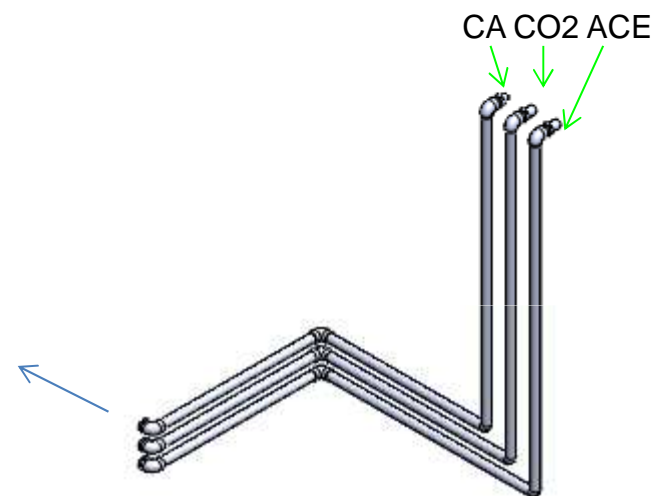
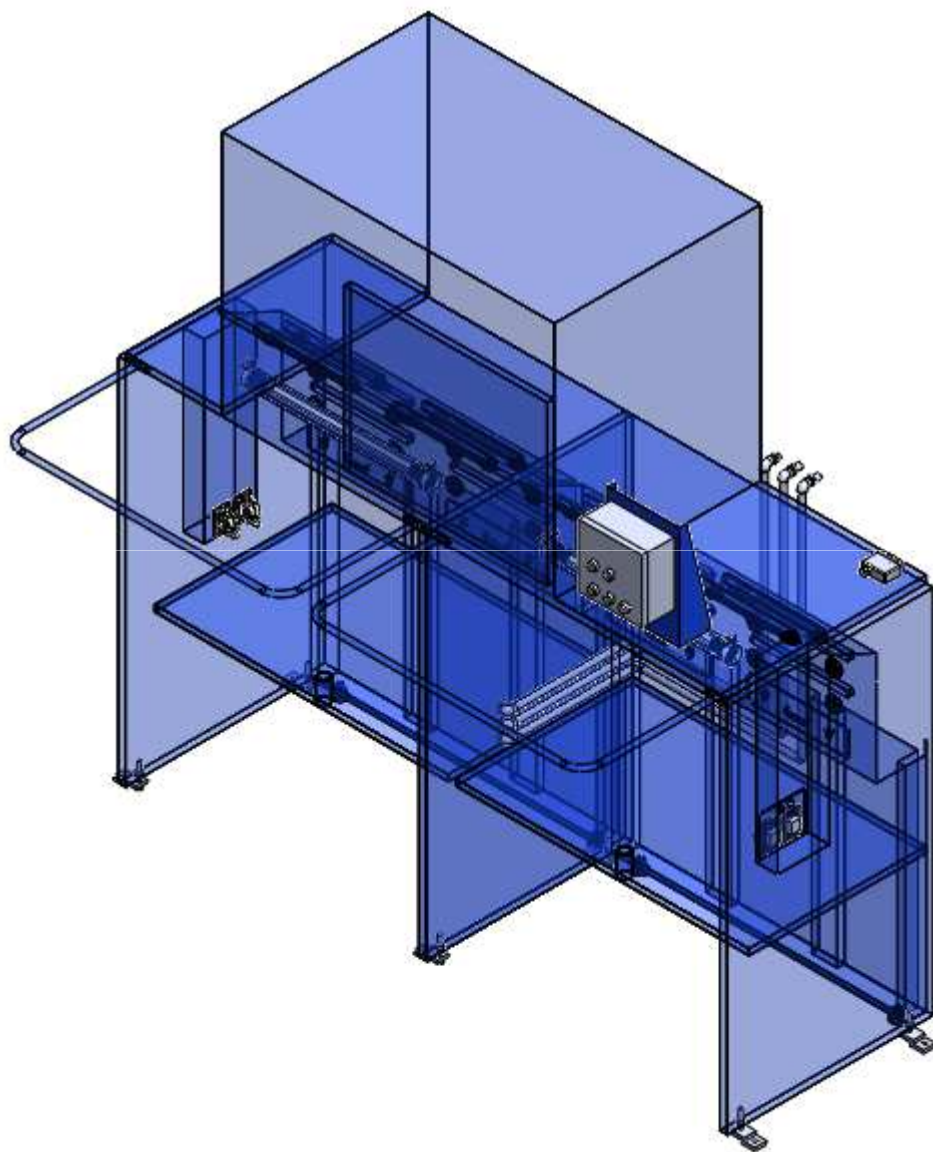
110V junction box
For working lights

CA CO2 ACE

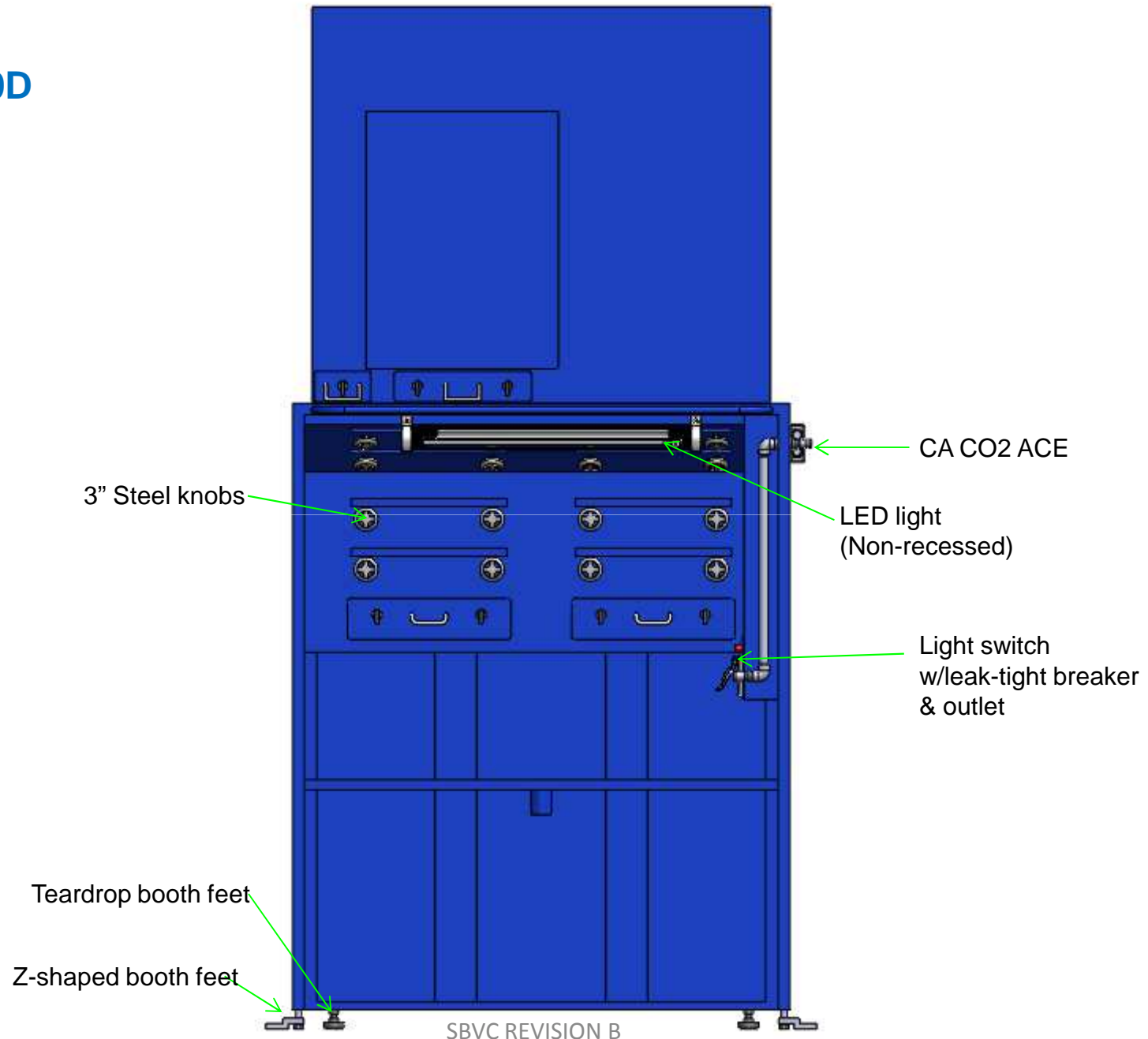


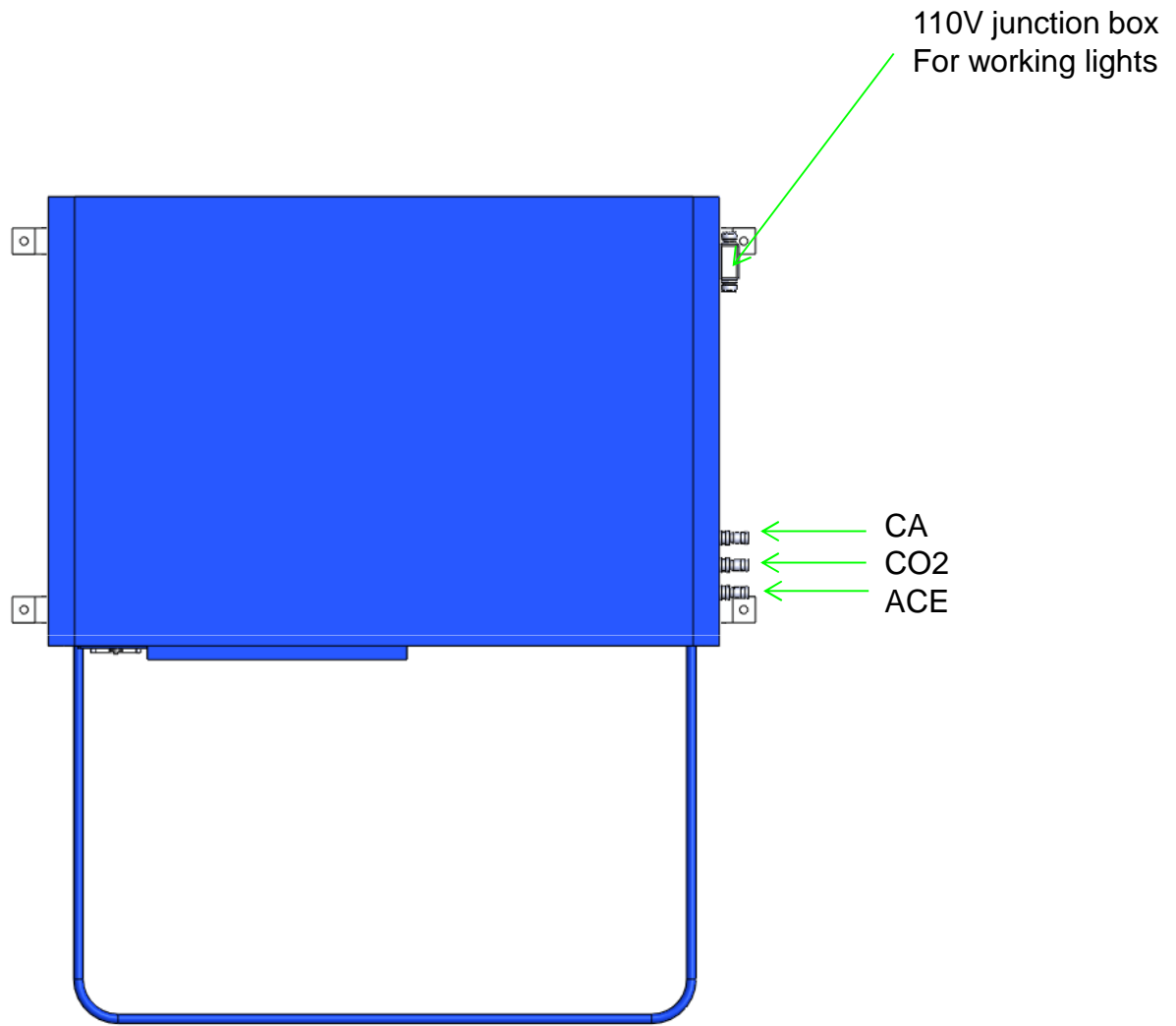


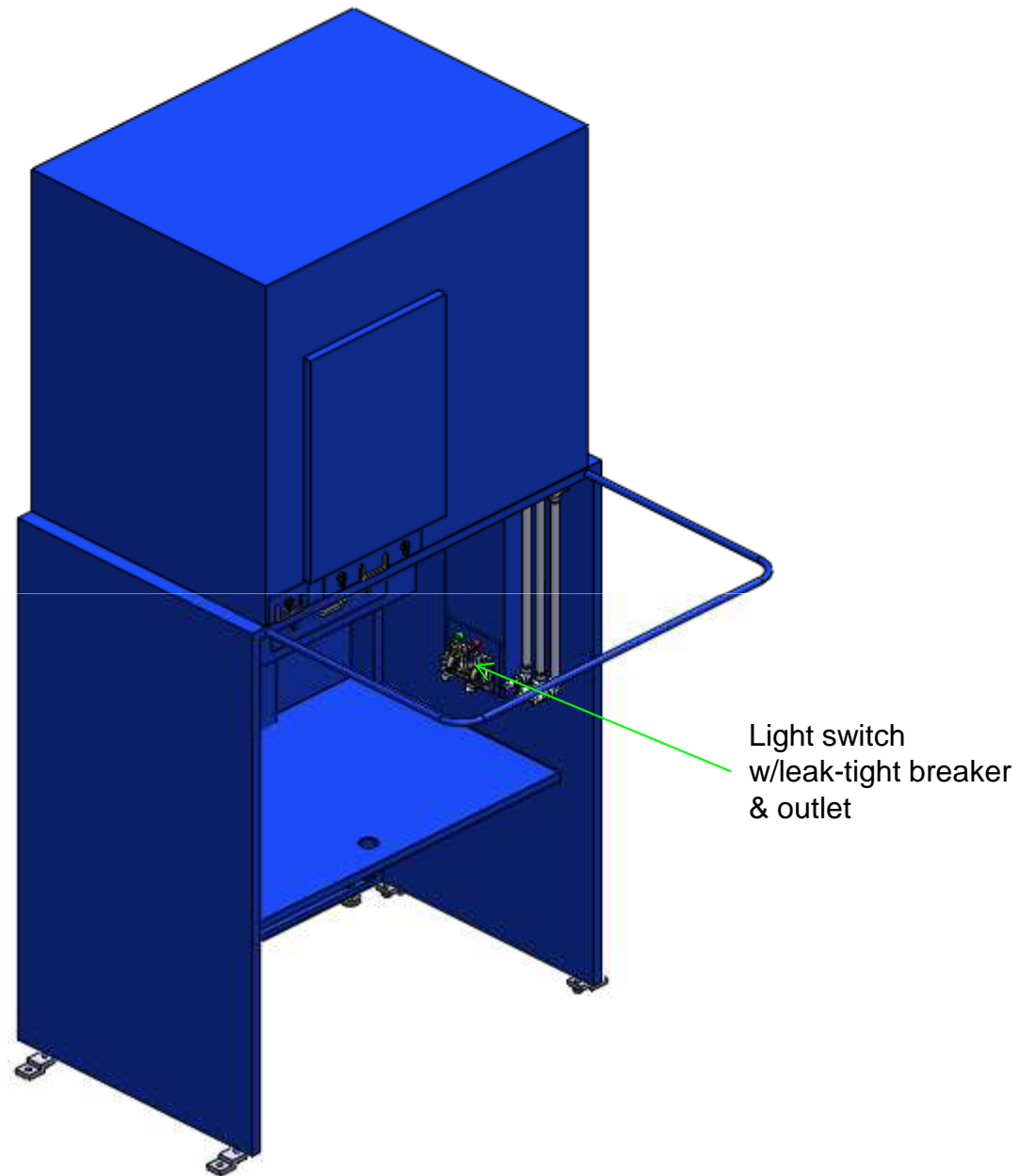




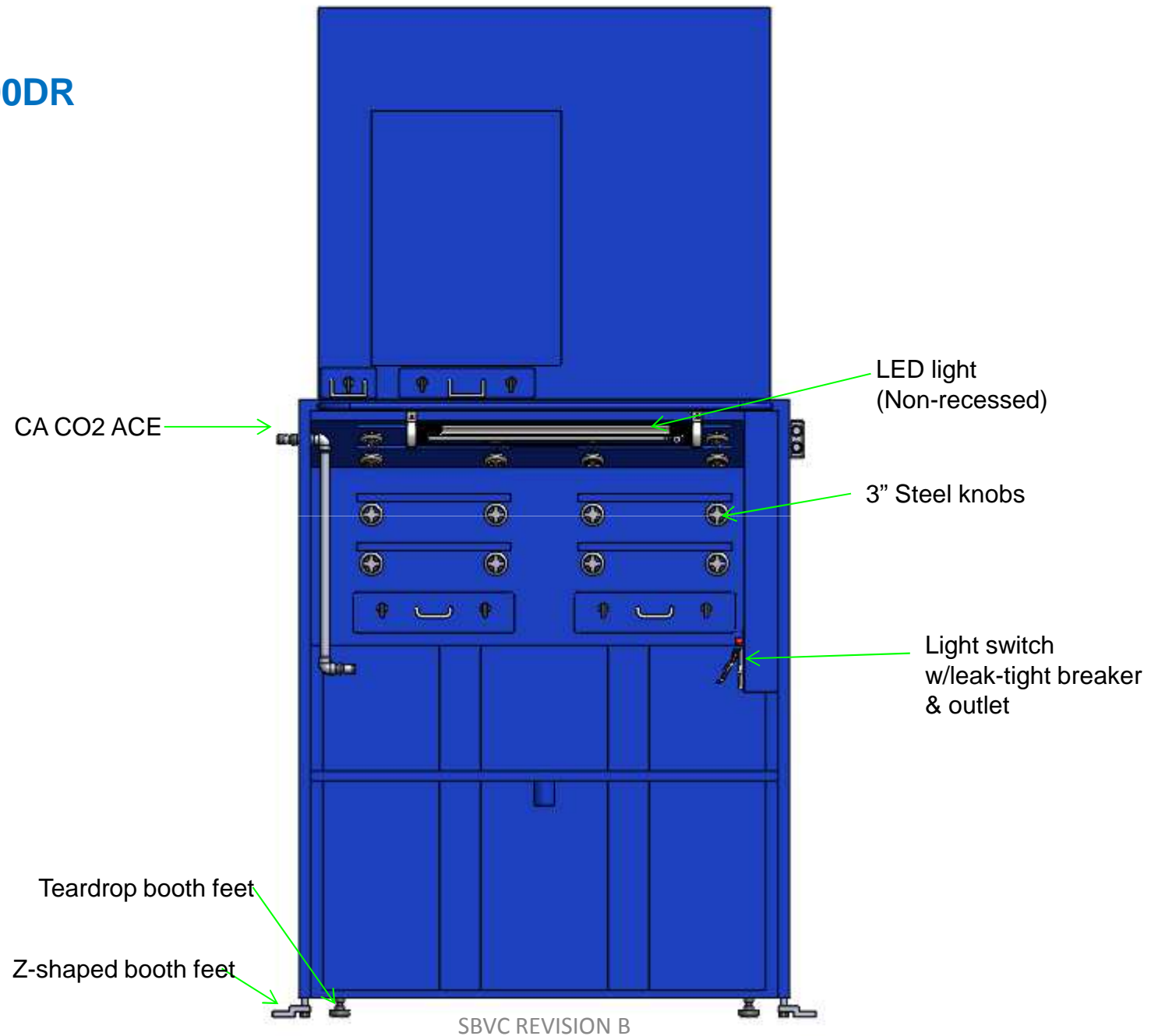
Type D
WB-3500D

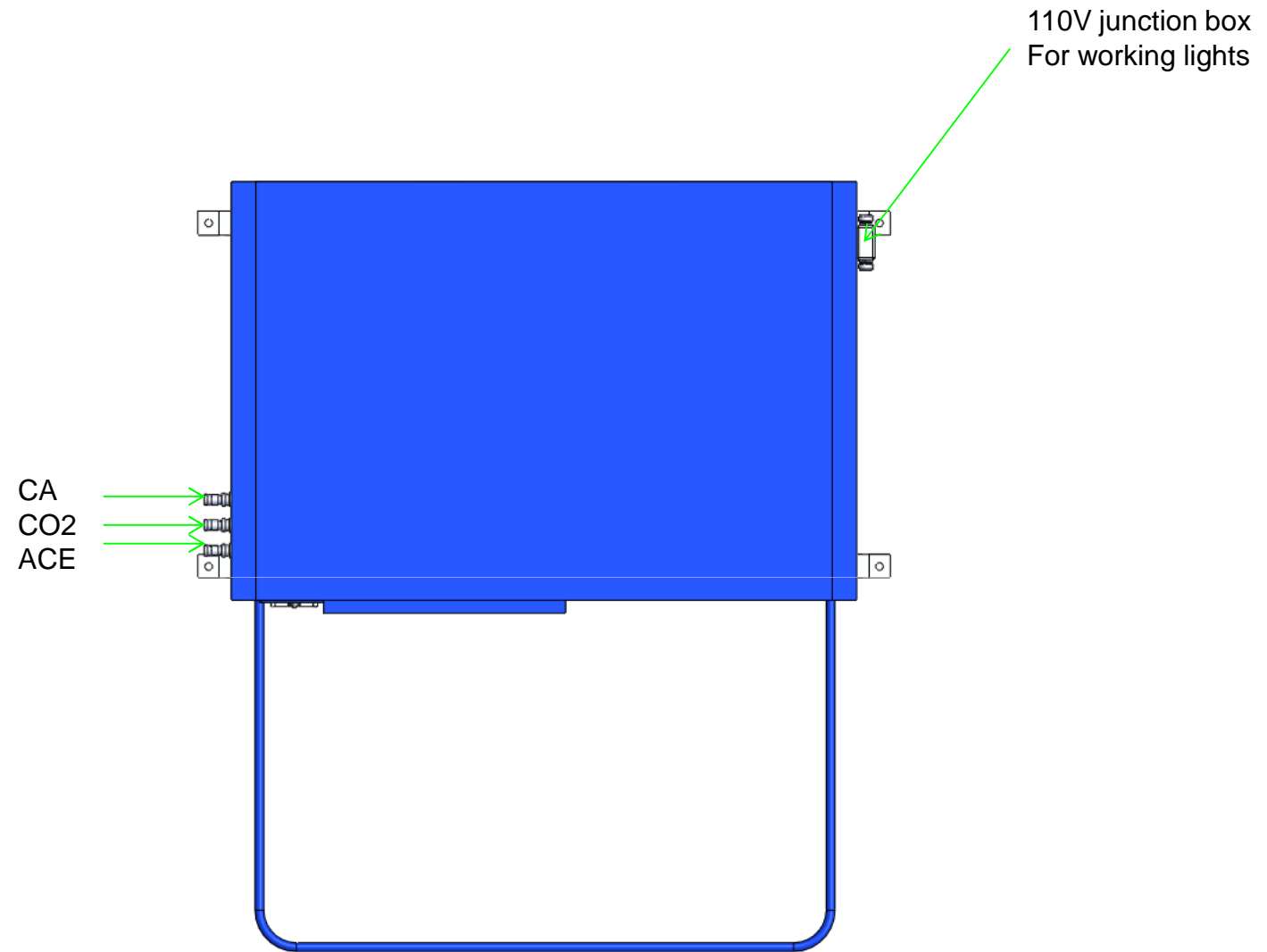


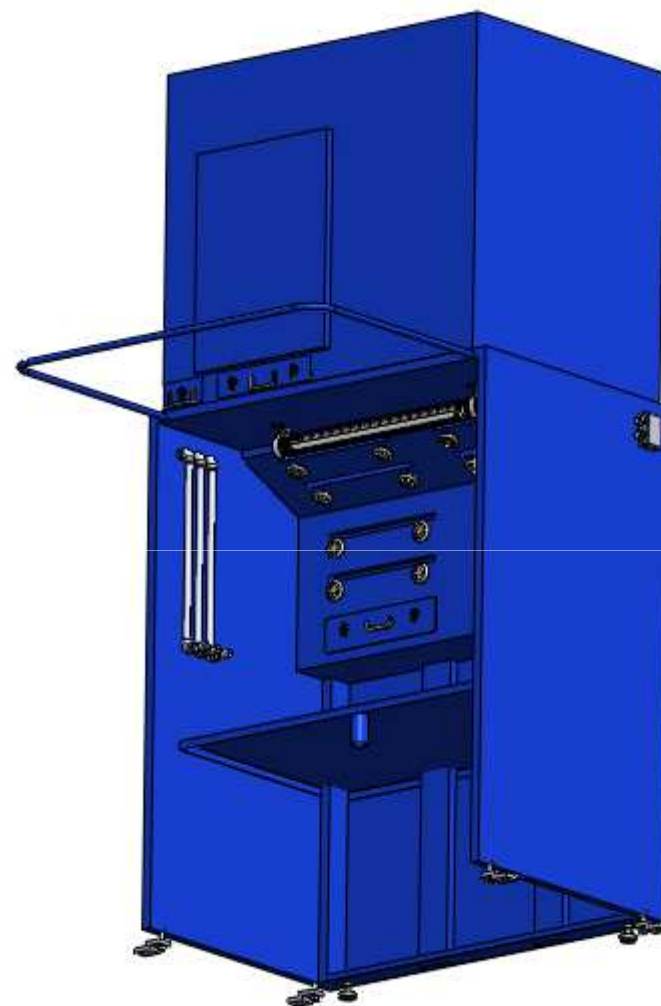
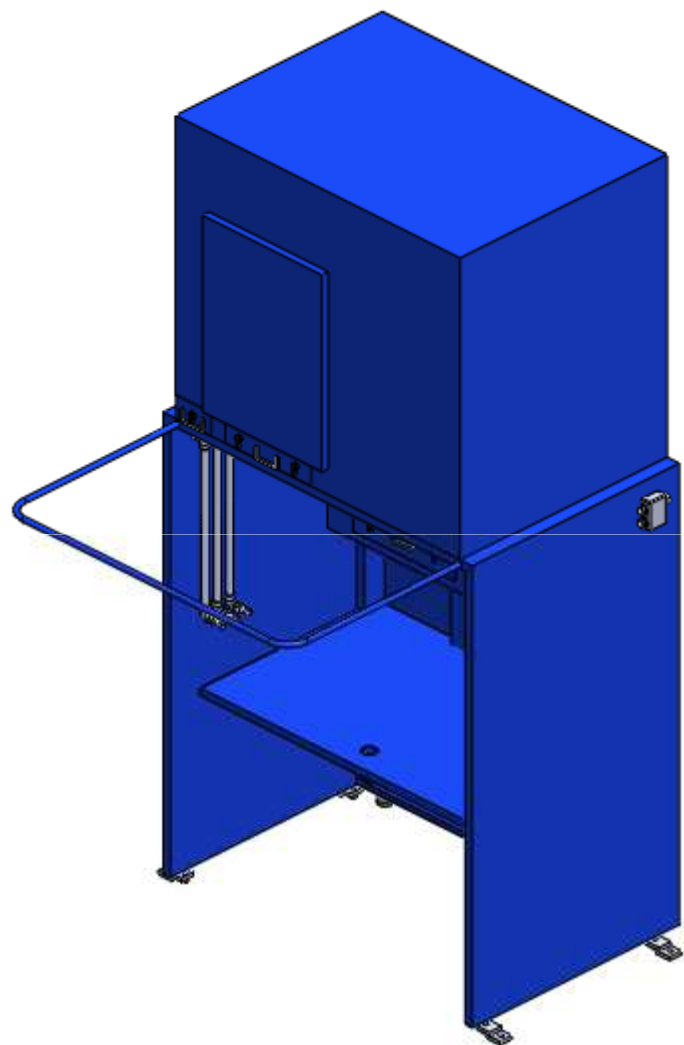




Type DR
WB-3500DR







Type E
WB-3500E

