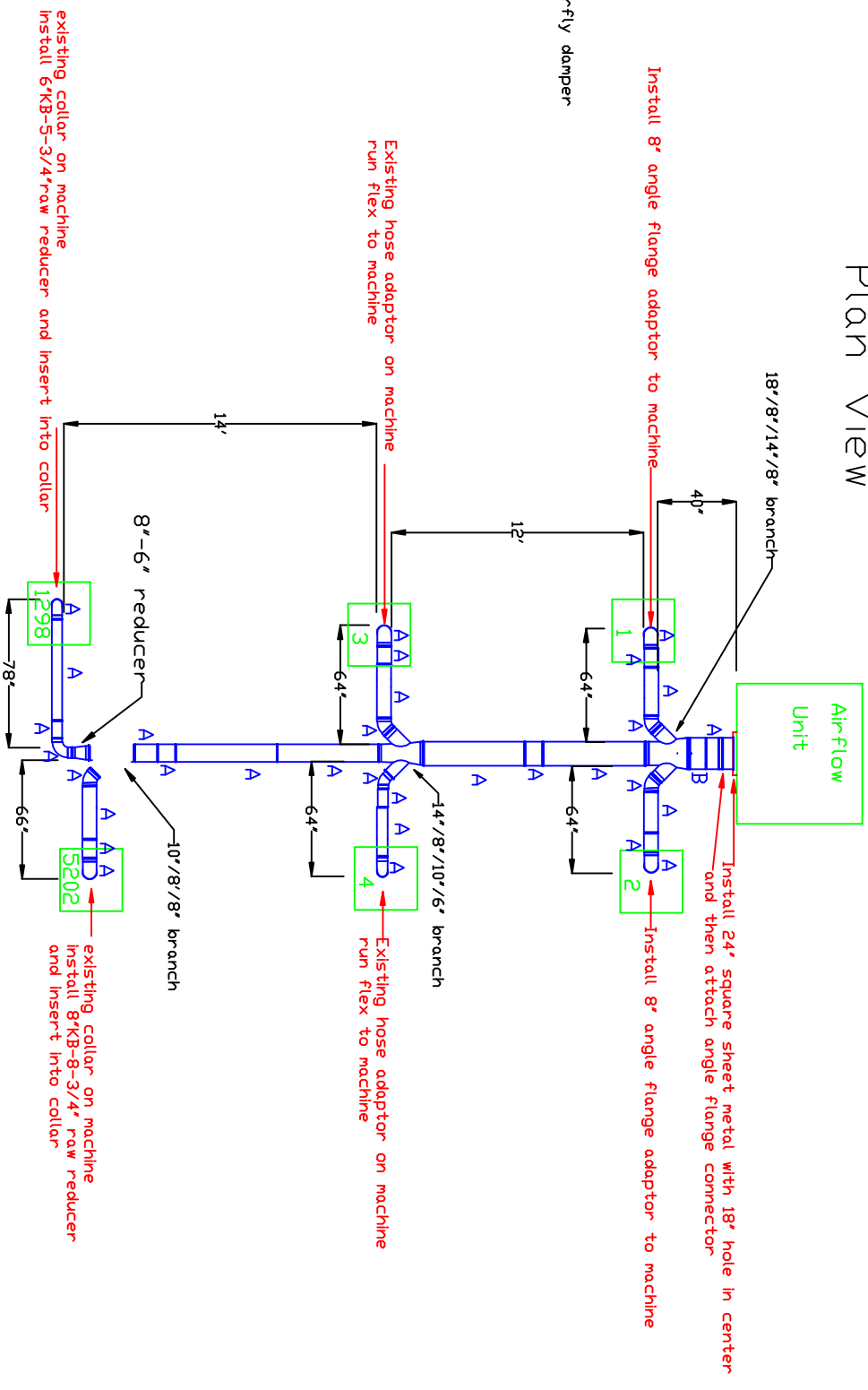


# AirFlow Ductwork Layout

## Plan View



- Notes:
1. Every drop to have a butterfly damper
  2. Vertical drops are 5'

- Bill of Materials:
- A: 18" pipe
  - B: 18" nipple
  - C: 14" pipe
  - D: 14" nipple
  - E: 10" pipe
  - F: 10" nipple
  - G: 8" pipe
  - H: 8" nipple
  - I: 8" 45 deg elbow
  - J: 8" 90 deg elbow
  - K: 6" pipe
  - L: 6" nipple
  - M: 6" 45 deg elbow
  - N: 6" 90 deg elbow