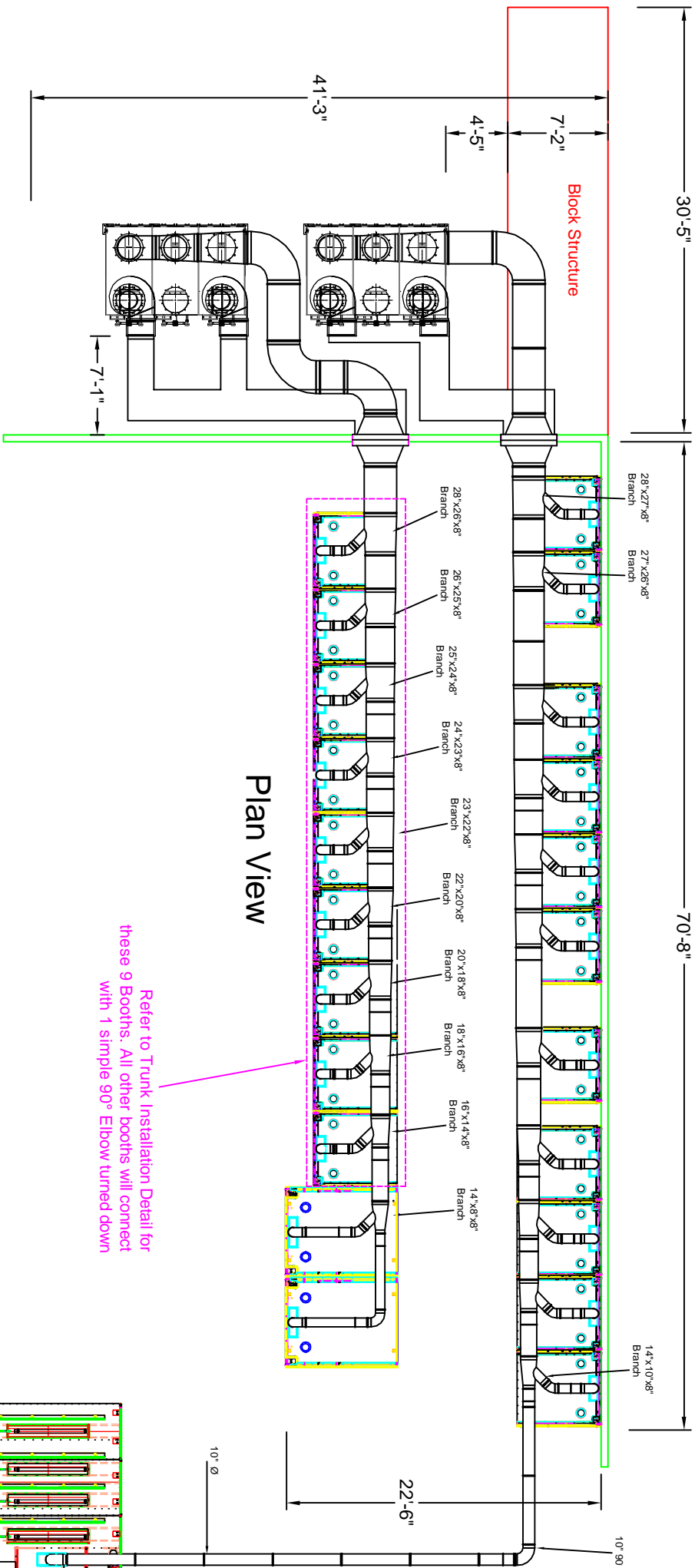
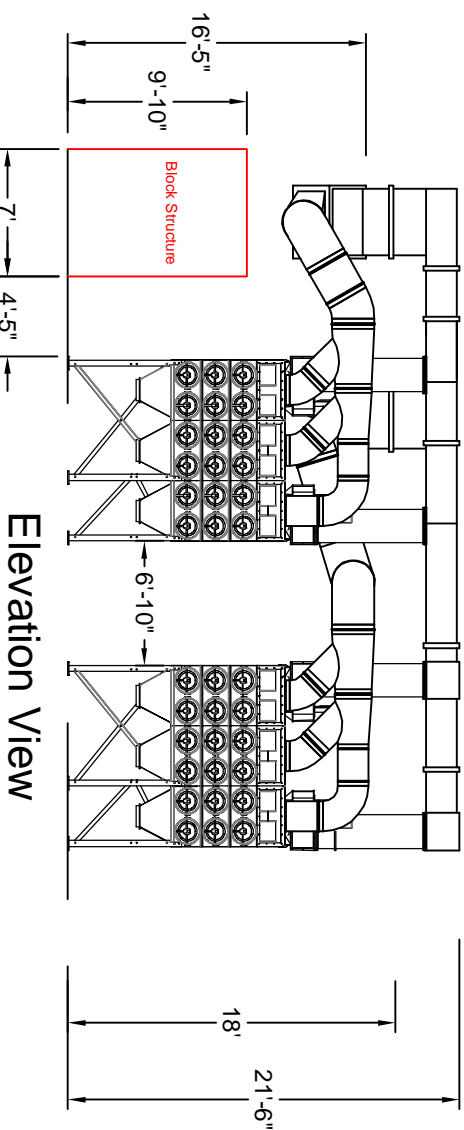


UA Local 5



Plan View



Elevation View

- Notes:
- 1) Clamp together duct
 - 2) Standard installation duct hung from ceiling
 - 3) Butterfly valve on each drop
 - 4) SDC AT 3-36 Collectors
 - 5) Fans/Silencers/ Rectangle Duct for Return Air

Refer to Trunk Installation Detail for these 9 Booths. All other booths will connect with 1 simple 90° Elbow turned down

PRELIMINARY

This product has not been tested for seismic calculations.

Any Customer requested, or caused changes effect, T&M will require a change order.

Avani Environmental Int'l. Inc.
95 Cypress Drive
Youngsville, NC 27596
P# 919-570-2862 F# 919-570-2883

Avani

Project: UA Local 5	Drawn by: HB
Drawing: Duct Layout	Rev 5
Date: 6/11/2015	
Sheet No: 1	

This document was created with Win2PDF available at <http://www.win2pdf.com>.
The unregistered version of Win2PDF is for evaluation or non-commercial use only.
This page will not be added after purchasing Win2PDF.