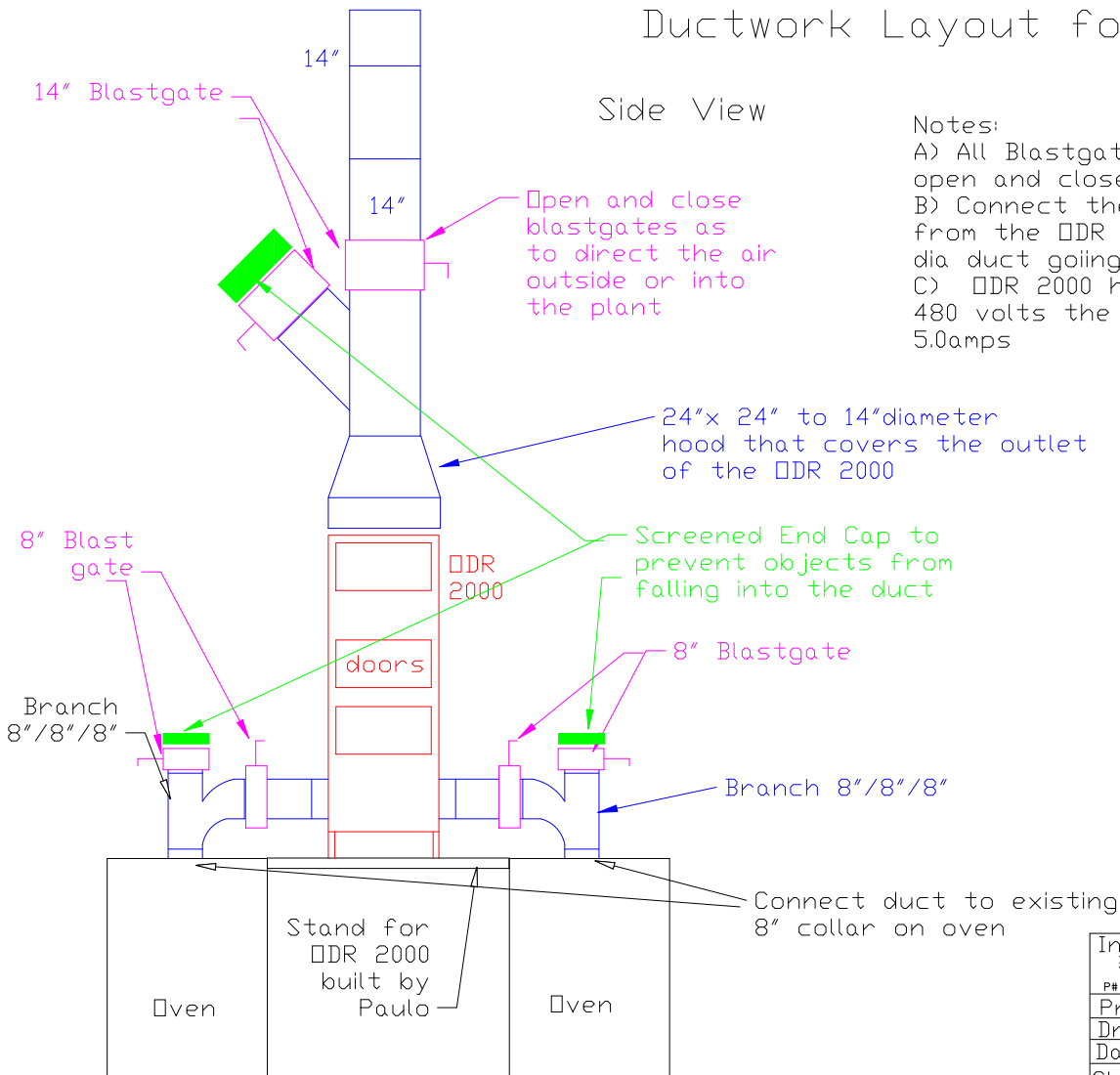


Ductwork Layout for the Ovens

Side View



Notes:

- A) All Blastgates will be manual to open and close
- B) Connect the 14" diameter duct from the ODR 2000 to existing 14" dia duct going through the roof
- C) ODR 2000 has a 3.5HP motor. AT 480 volts the full load amps are 5.0amps

Industrial Air Quality	IAQ
102 AG DRIVE Youngsville, NC 27596 P# 919-562-7181 F# 919-562-7182	
Project: Paulo	
Drawing: Ductwork Layout	
Date: 10/14/08 Drawn by: RAV	
Sheet No:	