

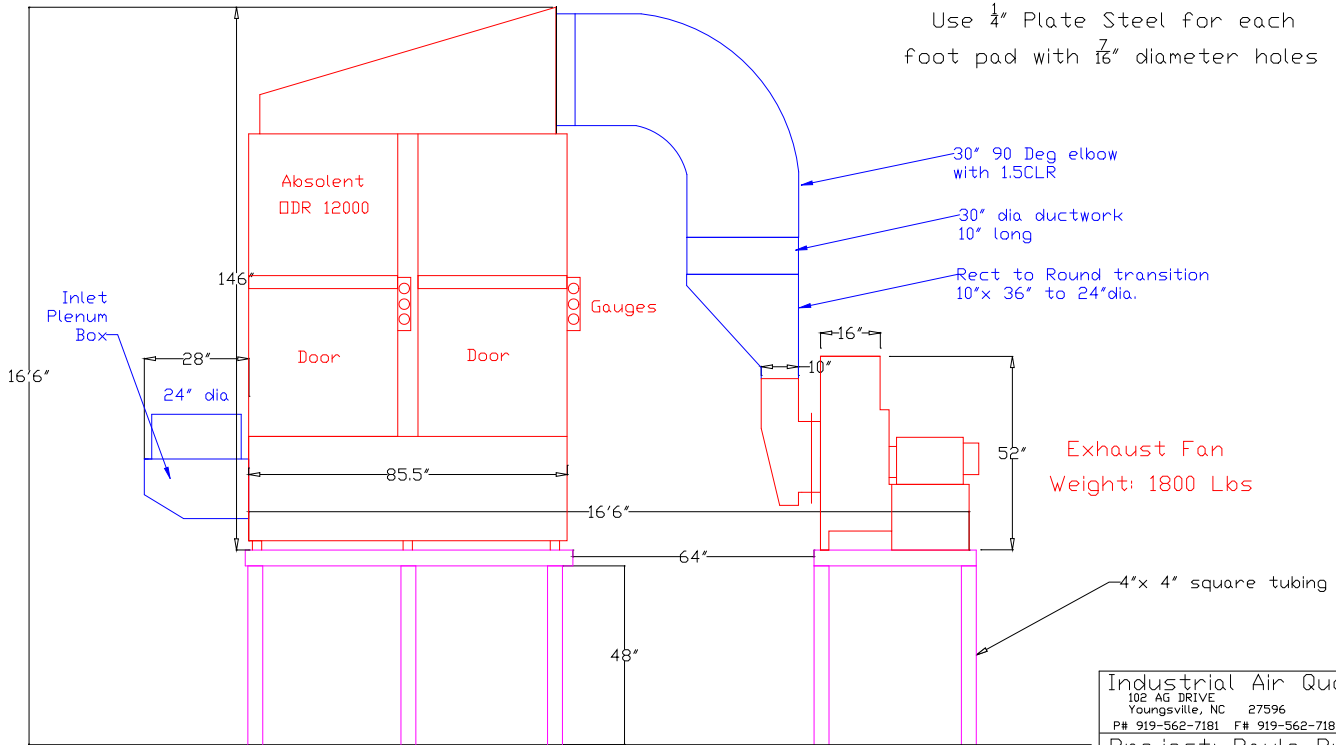
# Absolent / Fan Layout Drawing

## Elevation View

Absolent Stand is 86" Deep  
 Exhaust Fan Stand is 36" Deep

Use 4" Square Tubing for legs  
 and center support.  
 Add Gussets in all corners  
 for support

Use 1/4" Plate Steel for each  
 foot pad with 7/16" diameter holes



Exhaust Fan  
 Weight: 1800 Lbs

Industrial Air Quality		<b>IAQ</b>
102 AG DRIVE Youngsville, NC 27596		
P# 919-562-7181	F# 919-562-7182	
Project: Paulo Products		
Drawing: Stand Drawing		
Date: 3/30/09	Drawn by: RAV	
Sheet No: 1 of 2		