

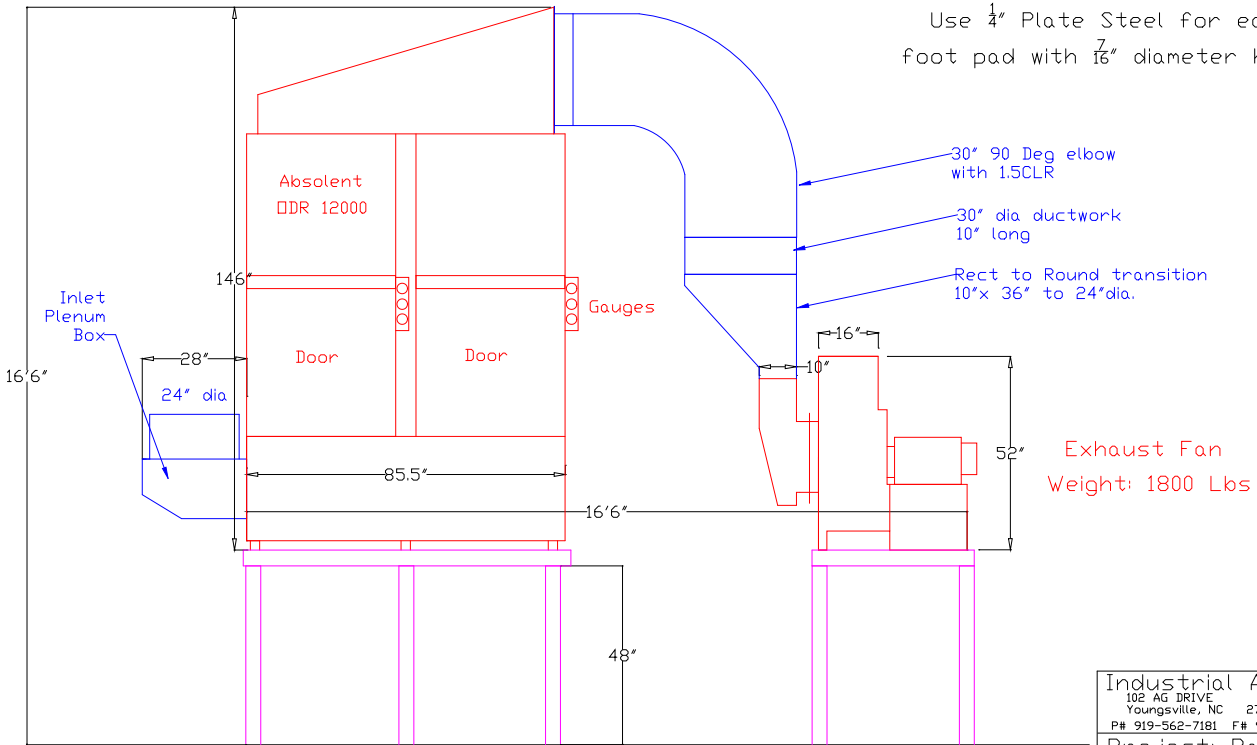
Absolent / Fan Layout Drawing

Elevation View

Absolent Stand is 86" Deep
 Exhaust Fan Stand is 36" Deep

Use 4" Square Tubing for legs
 and center support.
 Add Gussets in all corners
 for support

Use 1/4" Plate Steel for each
 foot pad with 7/16" diameter holes



Exhaust Fan
 Weight: 1800 Lbs

Industrial Air Quality		IAQ
102 AG DRIVE		
Youngsville, NC	27596	
P# 919-562-7181	F# 919-562-7182	
Project: Paulo Products		
Drawing: Stand Drawing		
Date: 3/30/09	Drawn by: RAV	
Sheet No:		