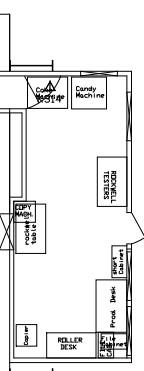
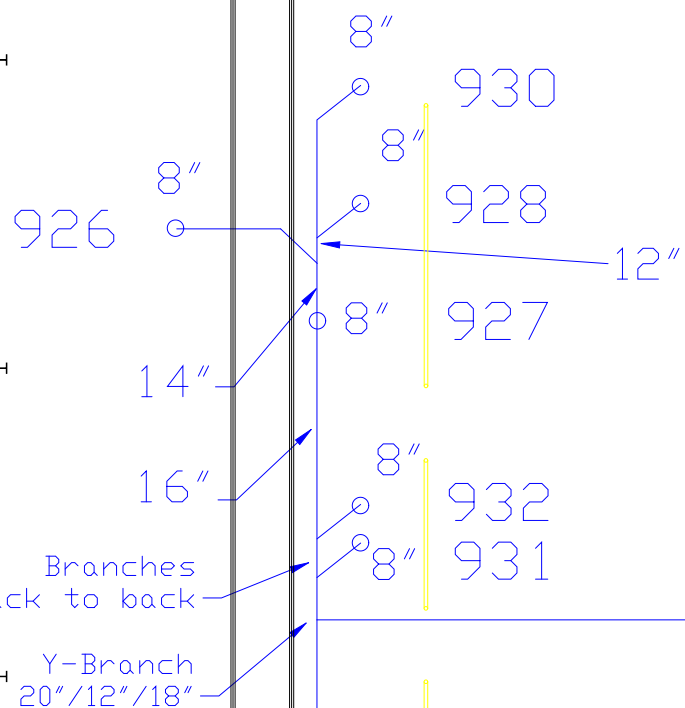


Cost Bay

N



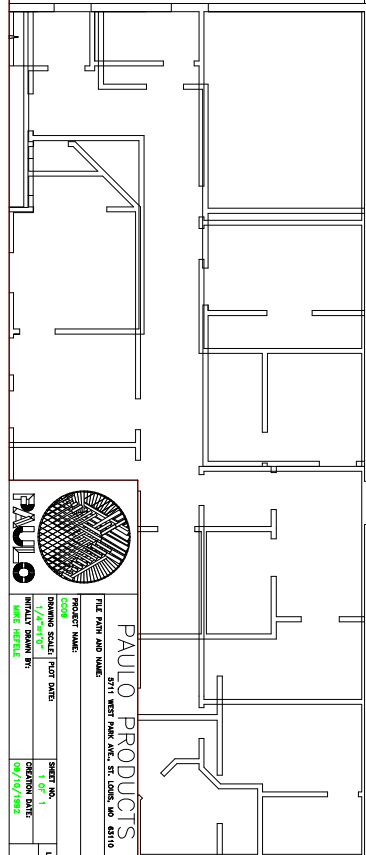
WALK



Branches are back to back

Y-Branch 20"/12"/18"

Note: 933 and 934 are are currently ducted together inside. We will connect to a 12" dia duct and go out through roof. It will go out directly above



PAULO PRODUCTS CO.
THE PAULO AND DAVID
2711 WEST PARK AVENUE, ST. LOUIS, MO 63110

PROJECT NAME:	SHEET NO.:	DATE:
DRAWING SCALE:	1 OF 1	07/07/1992
DATE:	07/07/1992	07/07/1992
DATE:	07/07/1992	07/07/1992
DATE:	07/07/1992	07/07/1992