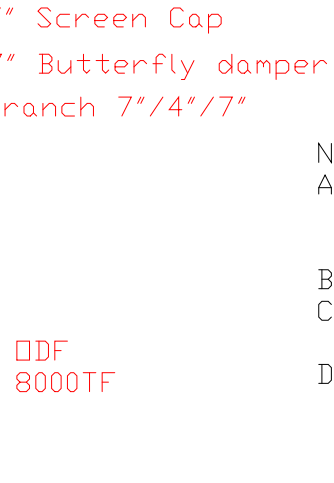
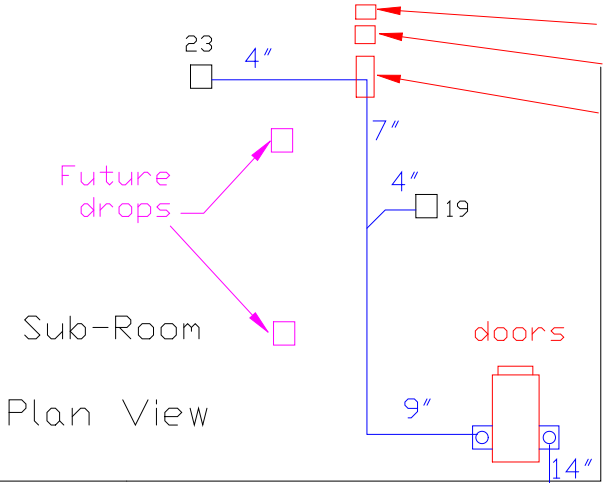


Ductwork Layout for ODF 8000TF



- Notes:
- A) ODF 8000TF 460 volts
3 phase Full load amps
14.5amps
 - B) Each drop has 300 CFM
 - C) Trunkline duct velocity
is 2700 FPM or higher
 - D) Each drop has a butter fly

damper to allow for airflow
adjustments

- E) At the ends of each main ductworkline, they will have

a butter fly damper. This will allow for bleed air into the trunkline to maintain a duct velocity above 2700 FPM so the oil mist will not drop out in the ductwork.

- F) Bottom of ductwork will be run at Industrial Air Quality
- G) Drain line to run with ball valve.

| | |
|--------------------------------------|--------------------|
| 19246 DRIVE Youngsville, Nc 27696 | IAQ |
| PH 919-562-7181 F# 919-562-7182 | Project: Mintz Ind |
| Who: MINTZ Ind | Who: MINTZ Ind |
| Date: 5/6/08 | Drawn by: RAV |
| Revision Date: | |