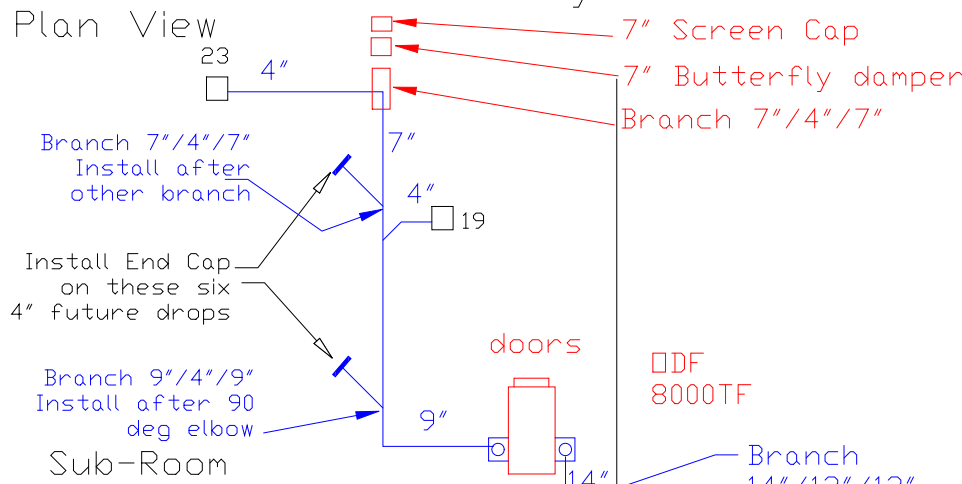
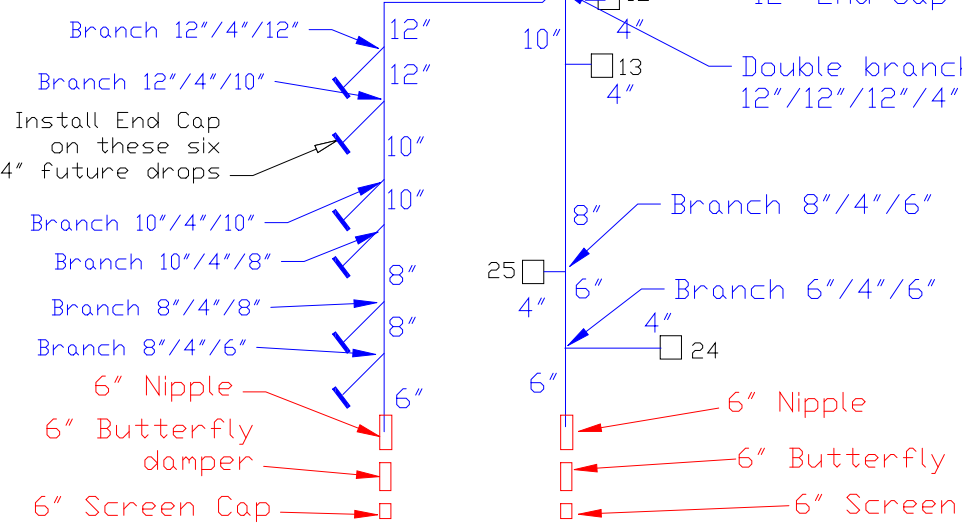


Ductwork Layout for ODF 8000TF

Plan View



Main Room



- Notes:
- A) ODF 8000TF 460 volts
3 phase Full load amps 14.5amps
 - B) Each drop has 270 CFM
 - C) Trunkline duct velocity is 2700 FPM or higher
 - D) Each drop has a butter fly damper to allow for airflow adjustments
 - E) At the ends of each main ductworkline, they will have a butter fly damper. This will allow for bleed air into the trunkline to maintain a duct velocity above 2700 FPM so the oil mist will not drop out in the ductwork.
 - F) Bottom of ductwork will be run at 12' off of floor.
 - G) Drain line: P-Trap with bal valve. Where do you want to run the drain line to?
 - H) Each drop will have a 5" Fire Damper

Industrial Air Quality		IAQ
102 AG DRIVE Youngsville, NC 27596		
P# 919-562-7181	F# 919-562-7182	
Project: Muntz Ind		
Drawing: Ductwork layout		
Date: 5/9/08	Drawn by: RAV	
Revision Date:		