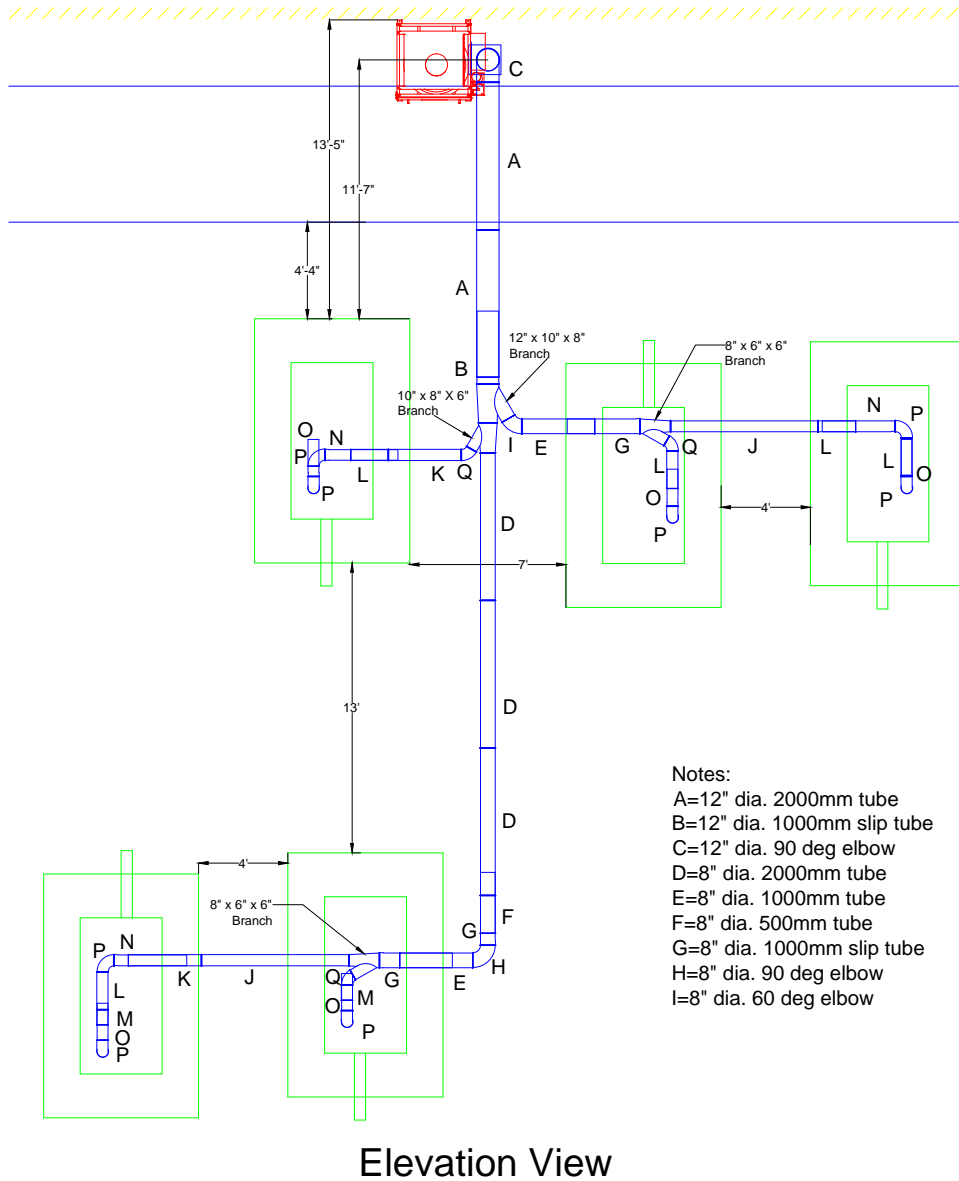


Medtronic - Citizen Line Area 2

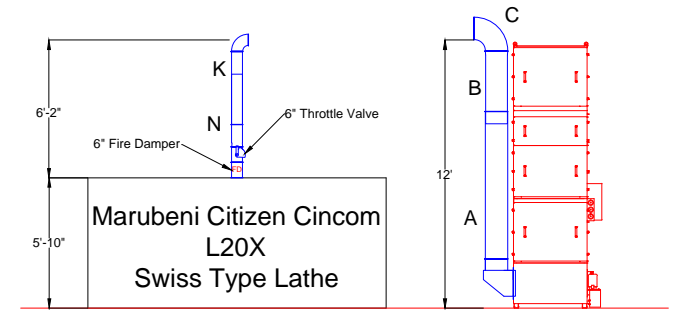


Elevation View

Notes:

- A=12" dia. 2000mm tube
- B=12" dia. 1000mm slip tube
- C=12" dia. 90 deg elbow
- D=8" dia. 2000mm tube
- E=8" dia. 1000mm tube
- F=8" dia. 500mm tube
- G=8" dia. 1000mm slip tube
- H=8" dia. 90 deg elbow
- I=8" dia. 60 deg elbow

- J=6" dia. 2000mm tube
- K=6" dia. 1000mm tube
- L=6" dia. 500mm tube
- M=6" dia. 200mm tube
- N=6" dia. 1000mm slip tube
- O=6" dia. 500mm slip tube
- P=6" dia. 90 deg elbow
- Q=6" dia. 60 deg elbow



Plan View

Notes:

1. All tubing, branches, reducers, and elbows provided by Jacobs Tubing Systems.
2. System tying into A-Smoke 40 (ODR-3000)

Avani Environmental Intl. Inc.
95 Cypress Drive
Youngsville, NC 27596
P# 919-570-2862 F# 919-570-2863

Avani

Project: Medtronic Citizen Line - Area 2

Drawing: Duct Layout

Date: 7-30-13

Drawn by: MDT

Sheet No: 1 OF 1

Rev 2