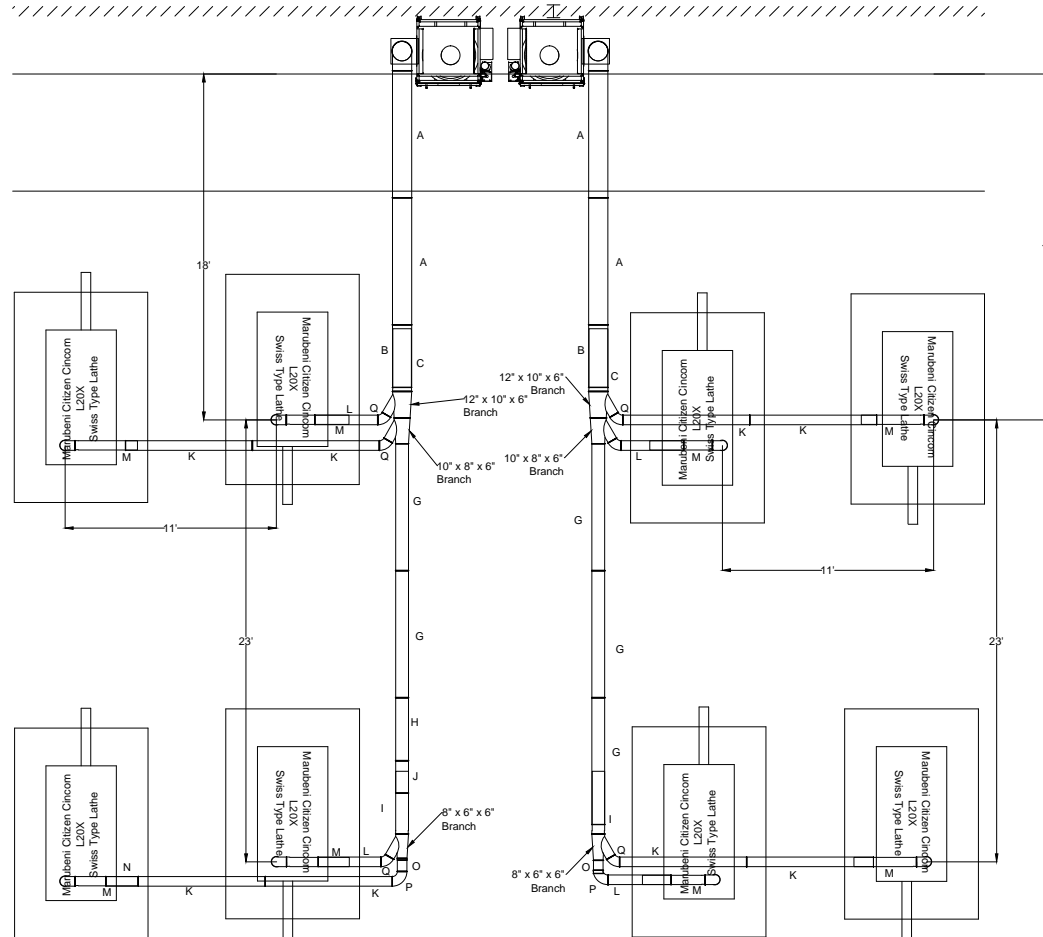
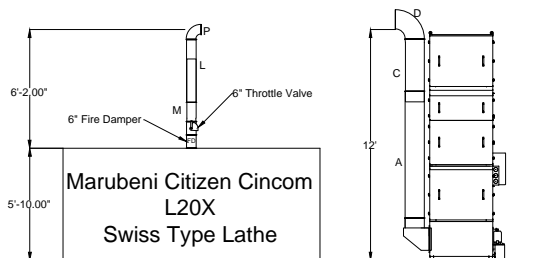


Medtronic - Citizen Line



- Notes:
1. All tubing, branches, reducers, and elbows provided by Jacobs Tubing Systems.
 2. System tying into two A-Smoke 40's (ODR-3000)



- Notes:
- A=12" dia. 2000mm tube
 - B=12" dia. 1000mm tube
 - C=12" dia. 1000mm slip tube
 - D=12" dia. 90 deg elbow
 - E=10" dia. 1000mm tube
 - F=10" dia. 1000mm slip tube
 - G=8" dia. 2000mm tube
 - H=8" dia. 1000mm tube

- I=8" dia. 1000mm slip tube
- J=8" dia. 500mm tube
- K=6" dia. 2000mm tube
- L=6" dia. 1000mm tube
- M=6" dia. 1000mm slip tube
- N=6" dia. 500mm tube
- O=6" dia. 200mm tube
- P=6" dia. 90 deg elbow
- Q=6" dia. 60 deg elbow

Avani Environmental Intl. Inc.
 95 Cypress Drive
 Youngsville, NC 27596
 P# 919-570-2862 F# 919-570-2863

Avani

Project: Medtronic Citizen Duct Layout

Drawing: Duct Layout

Date: 12-17-12

Drawn by: MDT

Sheet No: 1 OF 1

Rev 2