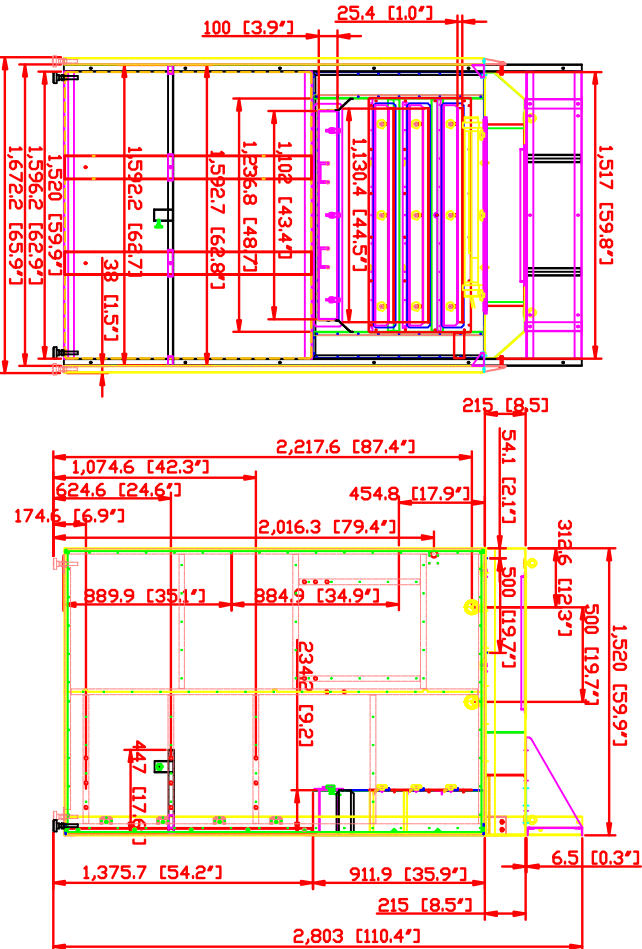
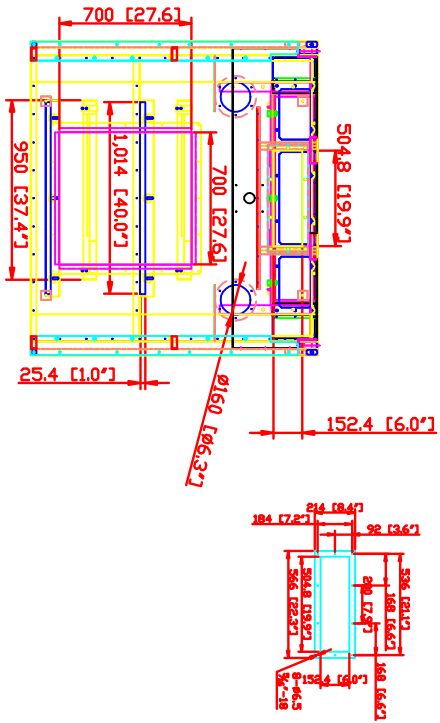


DO NOT SCALE

IF IN DOUBT ASK



Rev	Description	Date	Approved



WB-5X5 (RebTech side walls) WELDING BOOTH SPECIFICATIONS FOR MEDOX

- Hood Dimensions: 60" x 60" x 8.5"
 - Back Draft Dimensions: 48.7" x 35.9" x 9.2" (incl. clean out drawer)
 - Hood Inlet Opening: 6" x 19.9" (119.4 square inches)
 - Hood Service Panel: Removable 27.6" x 27.6" service panel
 - Back Draft Adjustable Inlet Slots: (3) 1" x 44.5"
 - Hood Adjustable Inlet Slots: (2) 1" x 40"
 - ***Overhead Lights: (2) LED Lights (110V, Single Phase, 60 Hz, 20W, non-recessed)
 - Adjustable Knobs: (15) 2 1/2" Five Star Twists
 - Clean Out Drawer: 3.9" x 43.4" (TD) with (3) hand twist locks
 - Adjustable Level System: (6) 2 1/2" Feet (maximum adjustment 5")
 - Support Structure: 1 1/2" x 4" steel stock welded
 - Panel Construction: 14-gauge welded steel single wall with cross and up bracing
 - Welding Curtain Supports: (2) 12" x 19" 30 degree gussets for overhead piping and accessories
 - Welding Support: (2) welding curtain brackets
 - Lifting Lugs: (4) Hood mounted lifting lugs to set and move hood or booth
 - Fume Arm Ceiling Supports & Brackets: Bolt into the hood
 - Fume Arm Cover Plates: (2) cover plates (6 bolt pattern) to match optional dia. 6" fume arm
 - Powder Coated: Oskar Safety Blue Standard (custom colors available)
 - Five Piece Configuration: (2) side panels, (1) back panel, (1) backdraft assembly, (1) hoodraft assembly.
 - Booths can be mounted back-to-back, side-to-side or both options
 - ***FabTech Side Wall Construction: one piece: exterior side smooth, interior side not smooth
 - ***Adjustable Back Shelf: 62.7"W x 17.6"D x 1.1"H (sold with 2" hole drilled)
- OPTIONS**
- Welded Nuts: Optional locations for J-hooks
 - Welding Nuts: For wire feeder or welder bracket
 - Adjustable Rear Shelf (solid, grated or cutting table)
 - Corner Shelves
 - Viewing Windows
 - Custom Welding Brackets
 - Foot Lockers
 - Fixtures, Lazy Suzans
 - Any option that can fit inside the booth or on the booth

OSKAR ENVIRONMENTAL, INC.
 95 Cypress Drive
 Youngsville, NC 27596

Sales Department
 (919) 570-2862
 sales@oskarsales.com

Date	Name	Part Number:	Title:
2010-04-26	XXXXX	Medix	WB-5X5 (KD walls)

Drawn by: 2010-04-26
 Checked by: XXXXX

This drawing is confidential and is the exclusive property of Oskar Environmental. No unauthorized use/copy or disclosure is to be made and it is returned whenever required.

Size: A
 Scale: 1 = 35
 Drawing Number: WB-5-5