

DO NOT SCALE

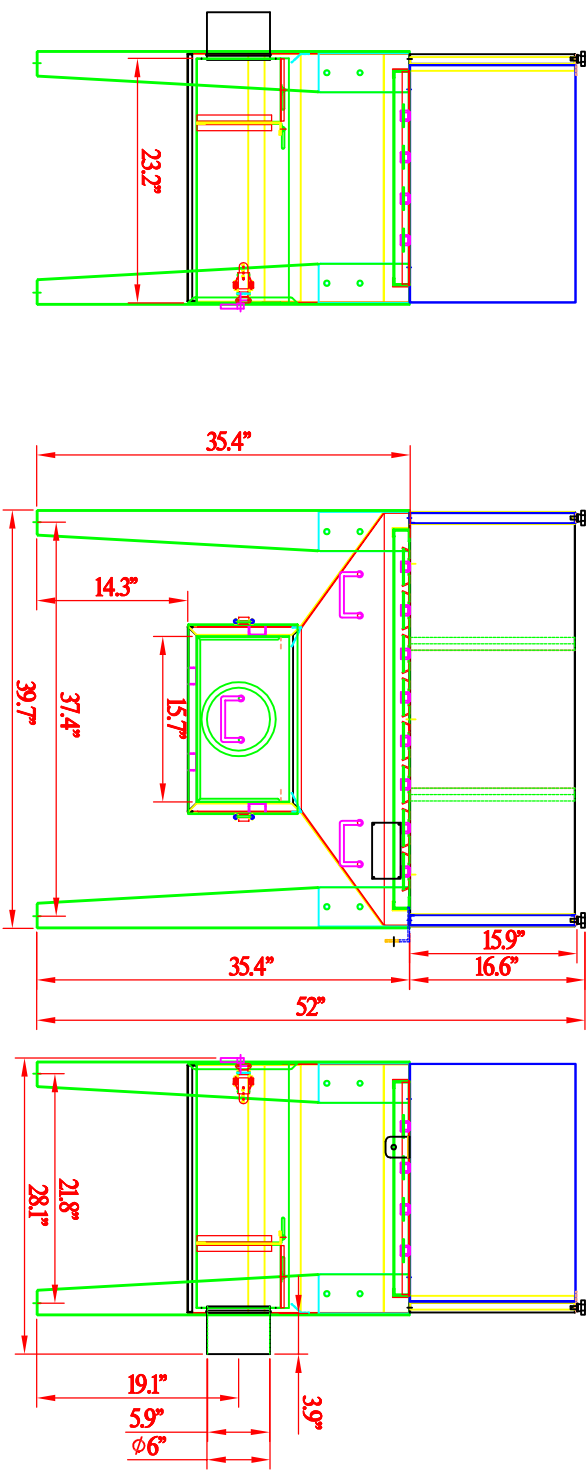
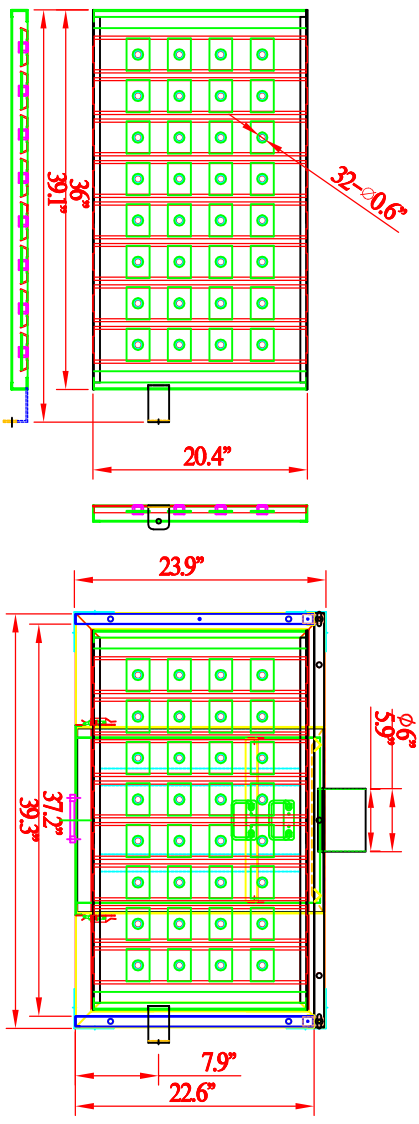
IF IN DOUBT ASK



Revisions			
Rev	Description	Date	Approved

SDT-180 DOWNDRAFT TABLE SPECIFICATION

- motor: NIL.
- dimensions: 39.3"L x 23.9"D x 52"H
- cabinet: 12-16 Gauge
- full grated top: 36"W x 20.4"D
- 3 single wall: removable sheet metal sides/back
- *** outlet: dia. 6"
- paint color: powder coated Blue
- *** grated table top with 16mm fixture holes



PRELIMINARY

AVANI ENVIRONMENTAL INTL. INC. Sales Department 95 Cypress Drive Youngsville, NC 27596		(919) 570-2862 Info@avanienvironmental.com	
Date	Name	Part Number:	Title:
Drawn by: 2015-03-30	***	REVISION II	SDT-180 Downdraft Table
Checked by:			
The drawings, AutoCAD, 3-D Models, and specifications are the property of Avani Environmental Intl. Inc. (AE) and may not be reproduced, distributed, modified, or otherwise used, except provided herein, without the express written permission of AE.		Size	Drawing Number:
		Scale	McCown Gordon
		1 = 20	SDT-180 Page 1 of 1