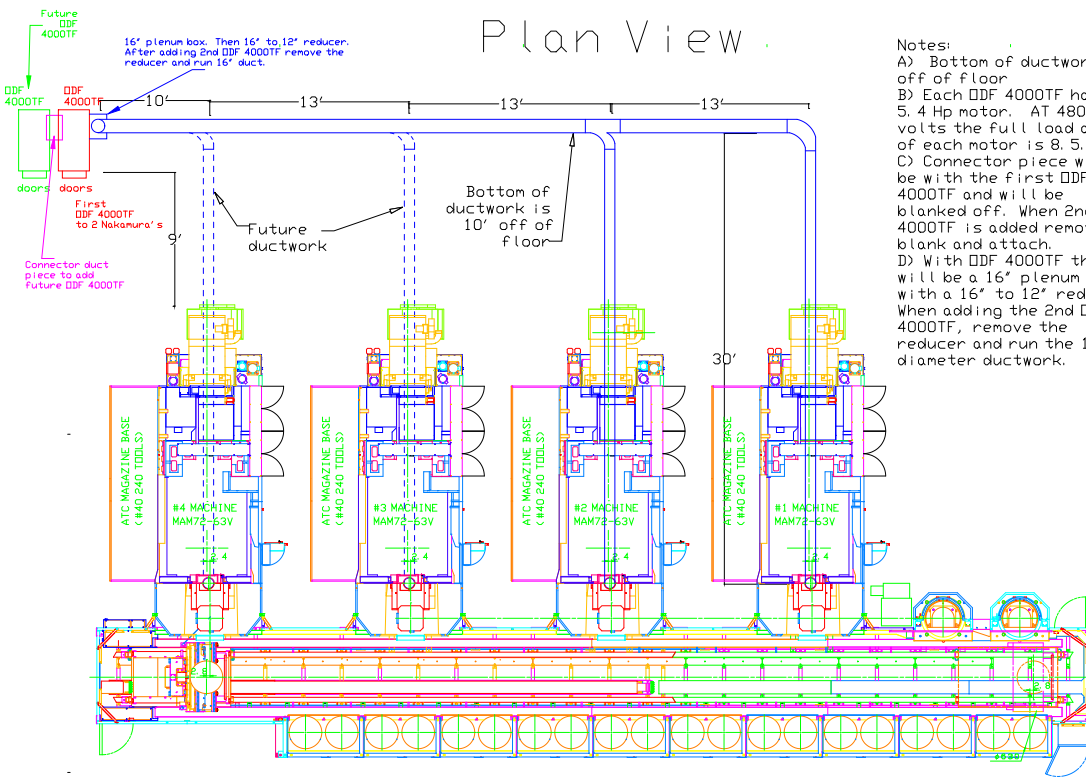
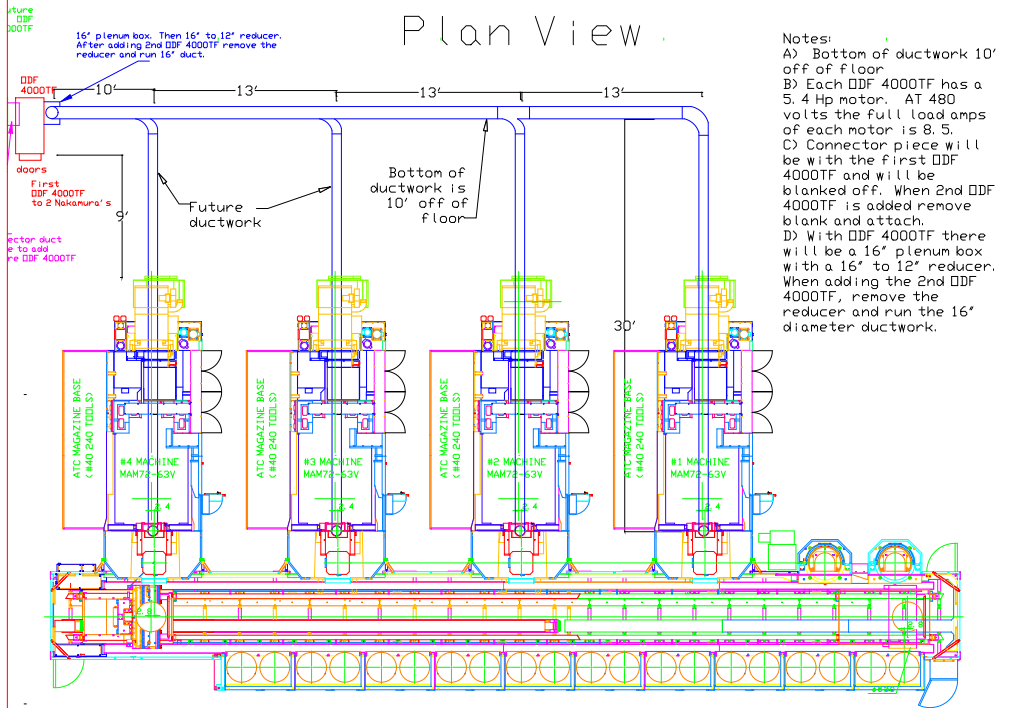


# Ductwork layout for Nakamuras Plan View



- Notes:
- A) Bottom of ductwork 10' off of floor
  - B) Each DDF 4000TF has a 5.4 Hp motor. AT 480 volts the full load amps of each motor is 8.5.
  - C) Connector piece will be with the first DDF 4000TF and will be blanked off. When 2nd DDF 4000TF is added remove blank and attach.
  - D) With DDF 4000TF there will be a 16' plenum box with a 16' to 12' reducer. When adding the 2nd DDF 4000TF, remove the reducer and run the 16' diameter ductwork.

# Ductwork layout for Nakamuras Plan View



- Notes:
- A) Bottom of ductwork 10' off of floor
  - B) Each DDF 4000TF has a 5.4 Hp motor. AT 480 volts the full load amps of each motor is 8.5.
  - C) Connector piece will be with the first DDF 4000TF and will be blanked off. When 2nd DDF 4000TF is added remove blank and attach.
  - D) With DDF 4000TF there will be a 16" plenum box with a 16" to 12" reducer. When adding the 2nd DDF 4000TF, remove the reducer and run the 16" diameter ductwork.