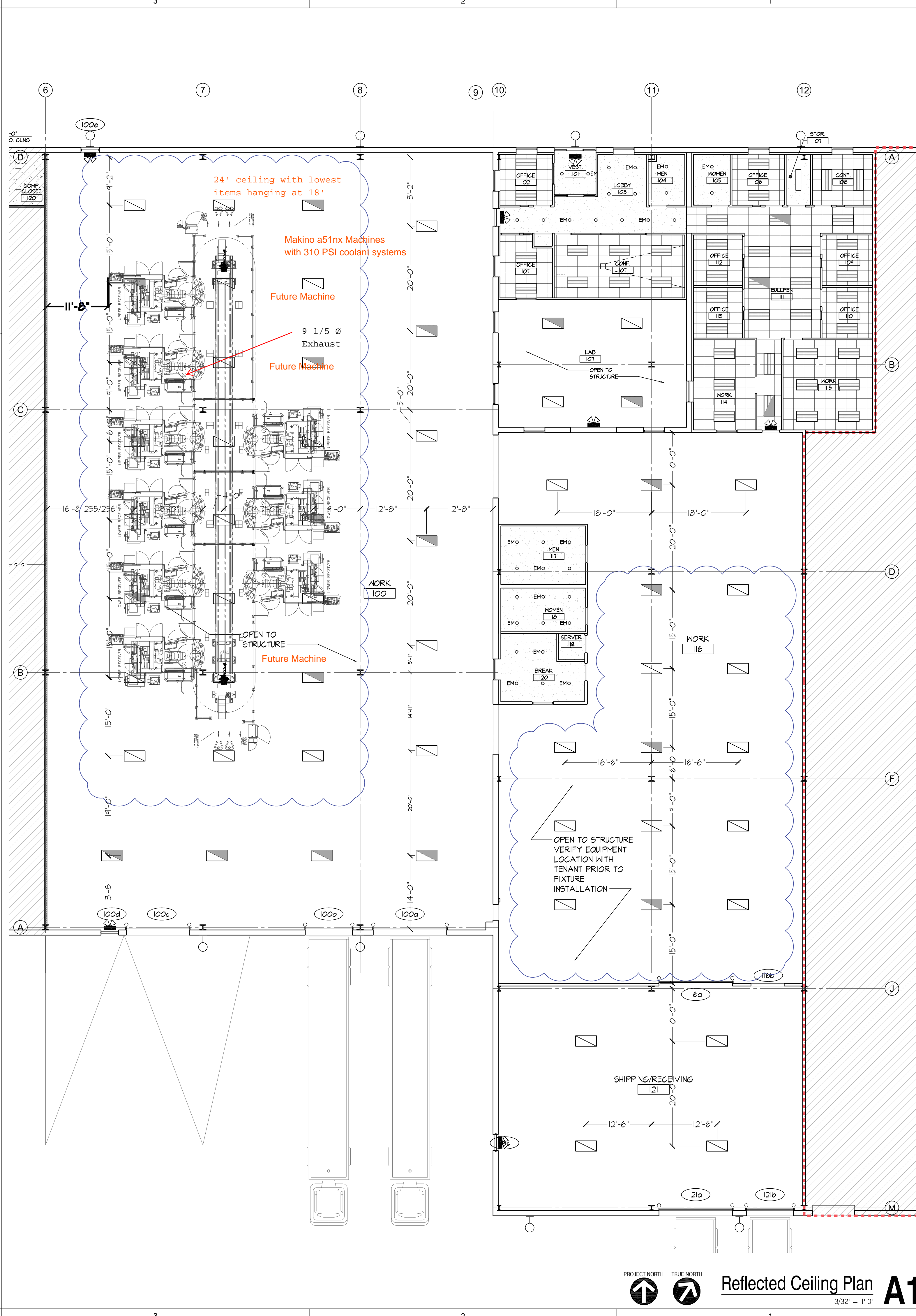


PROJECT NORTH TRUE NORTH Enlarged Reflected Ceiling Plan A1 1/8" = 1'-0"



PROJECT NORTH TRUE NORTH Reflected Ceiling Plan A1 3/32" = 1'-0"

CEILING GRAPHIC LEGEND:

- SUSPENDED FLUORESCENT LIGHT
- SUSPENDED FLUORESCENT LIGHT W/EMERGENCY BALLAST
- T-5 WAREHOUSE FLUORESCENT LIGHT (18' A.F.F.)
- T-5 WAREHOUSE FLUORESCENT LIGHT W/EMERGENCY BALLAST (18' A.F.F.)
- 2x4 FLUORESCENT LIGHT
- 2x4 FLUORESCENT LIGHT W/EMERGENCY BALLAST
- RECESSED CAN LIGHT
- RECESSED CAN LIGHT W/EMERGENCY BALLAST
- SURFACE MOUNTED FLUORESCENT LIGHT
- EXIT SIGN
- EMERGENCY LIGHT
- WALL MOUNTED EXTERIOR LIGHT FIXTURE

* NOTE: -ALL LAY-IN AND GYP. CEILING ARE 9'-0" A.F.F. U.N.O.
 -REF. INTERIOR ELEVATIONS & ELECTRICAL ELEVATIONS FOR ALL DECORATIVE FIXTURE HEIGHTS A.F.F.
 -REF. ELECTRICAL SCHEDULE FOR TYPES.
 -CLEAN & PAINT ALL EXISTING STRUCTURE TO REMAIN EXPOSED.

Tenant Finish Package for
KEMLAB L.L.C.
 1218 Central Industrial Ave., St. Louis, MO 63110

GS
 G. S. and S. Construction
 13588 Northwest Industrial Drive
 Bridgeton, Missouri 63044
 (314) 298-8100

TREANOR ARCHITECTS P.A.
 ARCHITECTS P.A.
 110 McDonald Drive, Suite 192
 Lawrence, Kansas 66044-1063
 Office: 785.842.4898
 Fax: 785.842.7536
 www.treanorarchitects.com

DRAWING INFORMATION

Drawing Date:	Drawn By:	Checked By:
10.17.12	YS	MT

REVISIONS

Rev	Comment	Date

A401

REFLECTED CEILING PLAN