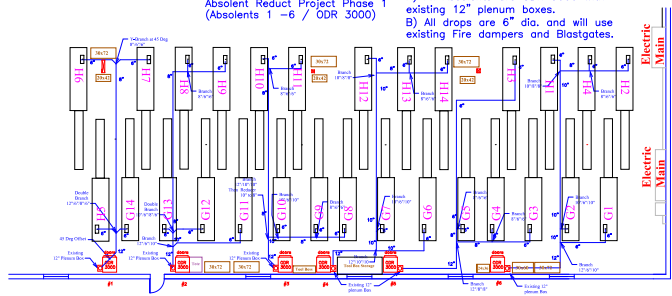
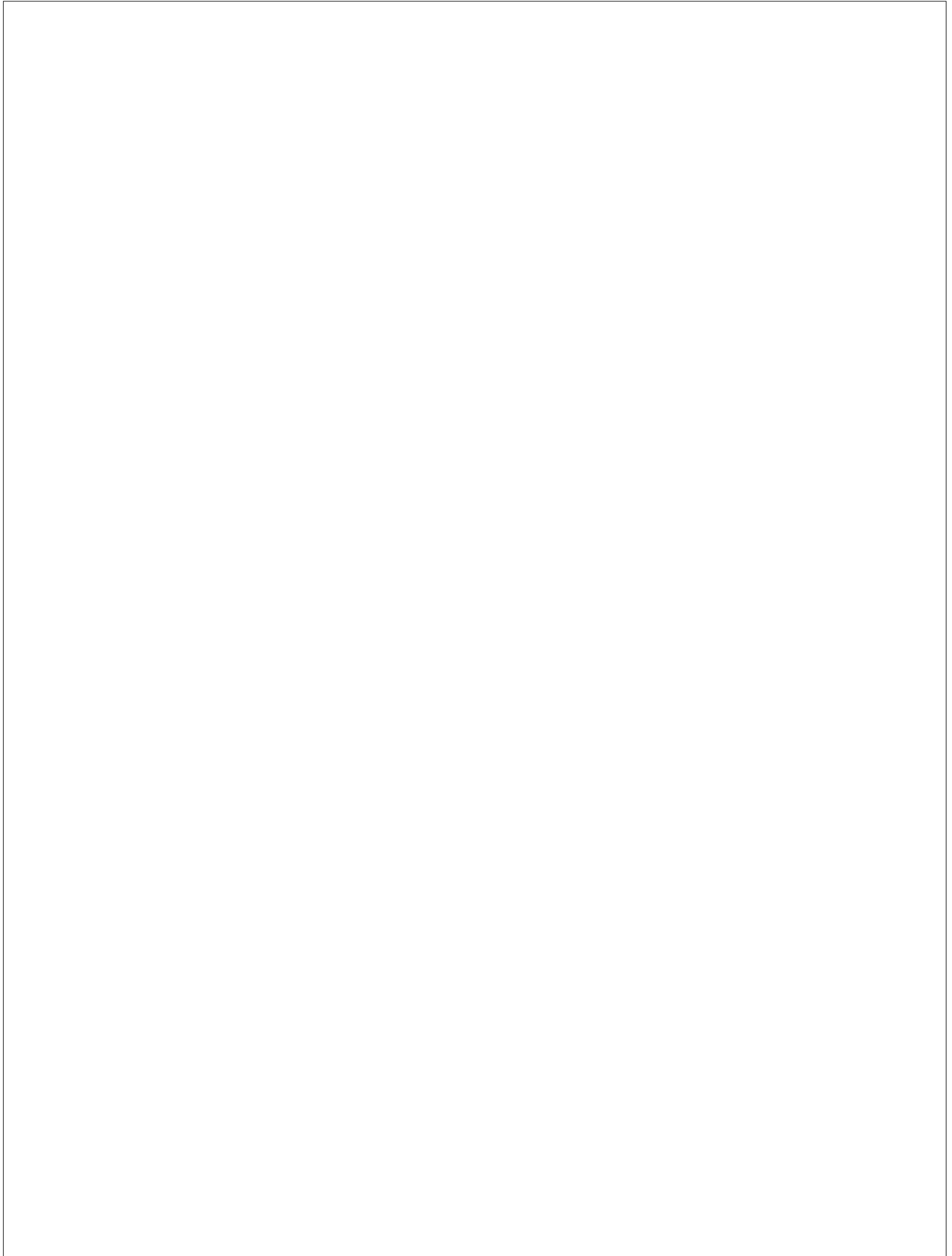


Machine Labs / Lexena, KS  
Absolent Reduct Project Phase 1  
(Absolents 1 - 6 / ODR 3000)

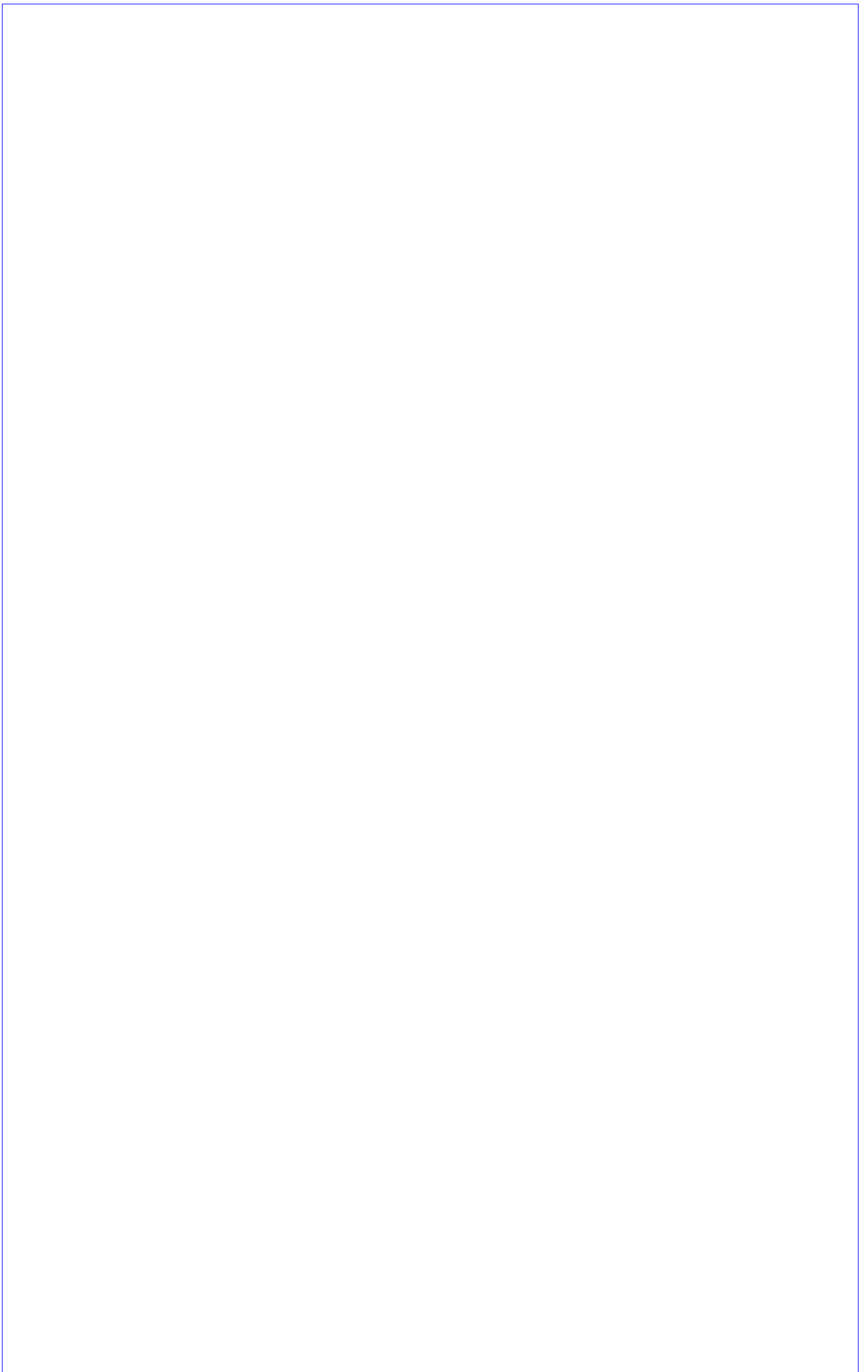
Notes:  
A) All Absolents are ODR 3000 with existing 12" plenum boxes.  
B) All drops are 6" dia. and will use existing Fire dampers and Blastgates.











Blue = Operator #1  
Red = Operator #2

