



REPRESENTED BY:

TODD AIR SOLUTIONS
101 E FISHER ST, 3rd FLOOR
SALISBURY NC 28144
Phone: 704 630-1101
Fax: 704 630-0528

DRAWING SUBMITTAL

CUSTOMER:

AVANI ENVIRONMENTAL
PO BOX 1279
YOUNGSVILLE, NC 27596

DATE: 11/12/2012

ATTENTION: Mr. Ken Haga

P.O. # 5352

CFV # 1214335

REPRESENTATIVE ORDER # CFQ# 216796

 X REFERENCE APPROVAL CORRECTION

QTY.	DRAWING NO.	DESCRIPTION
	- - - -	SPECIFICATION SHEET
	1214335	MODEL HDBI-270
	27205	FLANGES
	17110-270	DISCHARGE DAMPER

REMARKS: 2D CAD FILE ALSO INCLUDED.

SPECIFICATION SHEET

CFV NO. 1214335	CUSTOMER ID NUMBER 3566220	PAGE 1	SCHEDULED SHIP DATE 11/28/12
S O L D	AVANI ENVIRONMENTAL PO BOX 1279 YOUNGSVILLE, NC 27596	CUSTOMER P.O. NUMBER 5352	BUYER Mr. Ken Haga
		REPRESENTATIVE TODD AIR SOLUTIONS	REP. ORDER NO. CFQ# 216796
T O			

MARKS

5352

QTY.	DESCRIPTION				MODEL	ROT	DISCH	ARR	WHEEL/PROP	INLET			
2	HEAVY DUTY BI BLOWER				HDBI-270	CW	UB	4	SQBI 100%				
MOTOR DATA	HP	RPM	PH	CYCLE	VOLTAGE		FRAME	ENCLOSURE	SUPPLIED BY	INSTALLED BY			
	30	1750	3	60	190/380/50 & 230/460/60		286T	TEFC	CFV	CFV	GROOVES	FXD/ADJ	BELT
CFV MOTOR PART NUMBER											37710033I		
FAN DATA	DENSITY	TEMP.	ALTITUDE	CFM	SP	RPM	BHP			MOTOR SHEAVE	BUSHING		
AT OPERATING CONDITIONS	.075	70 °F.		12000	10.000	1750	26.600			FAN SHEAVE	BUSHING		
MOTOR VENDOR MODEL NUMBER	0304SDSR41A-P												

Record Print, 2D CAD Drawings

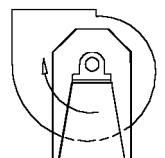
Complete Motor Description:

MTR, 30 HP, 1425/1750 RPM, 3PH, 50/60Hz, 190/380/50 & 230/460/60, TEFC, Prem Eff, FM, 286T, IP54, 1.15 SF, F Insul., 40C Amb., F1 Box, Cast Iron Frame, EQP Global SD Series, Toshiba

Maximum allowable wheel speed at 70°F is 2493 RPM

- Estimated Shipping Weight: 1391 pounds
- CLASS III WHEEL CONSTRUCTION
- PAINT DAMPER WITH SAME SPECIAL COATING AS FAN
- MANUAL CONTROLLED OPPOSED BLADE DISCHARGE DAMPER
- DRILL DISCHARGE FLANGE STANDARD
- DRILL INLET FLANGE STANDARD BOLT CIRCLE ON-CENTERS
- QUICK OPEN INSPECTION DOOR AT 3 O'CLOCK
- DRAIN
- TEFLON SHAFT SEAL
- Avani Blue PAINT

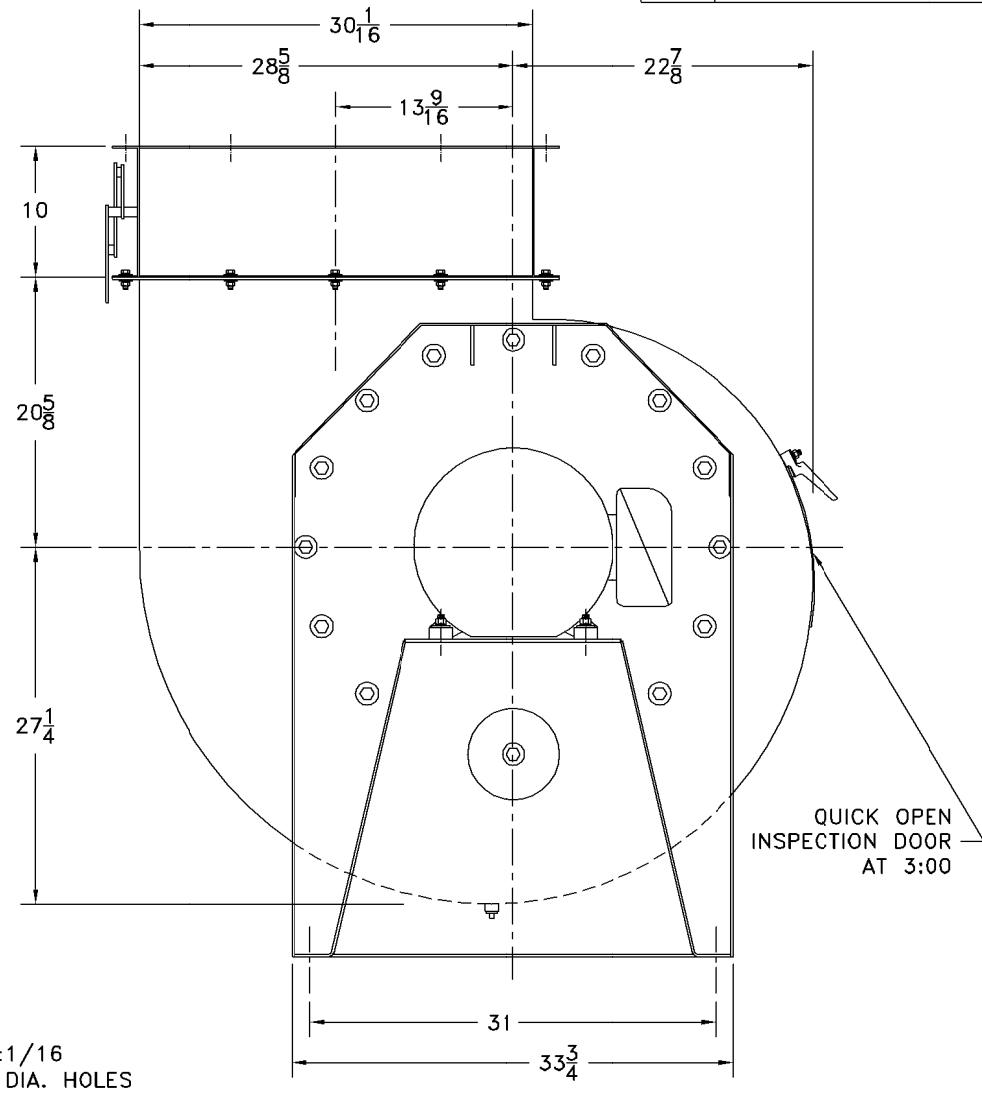
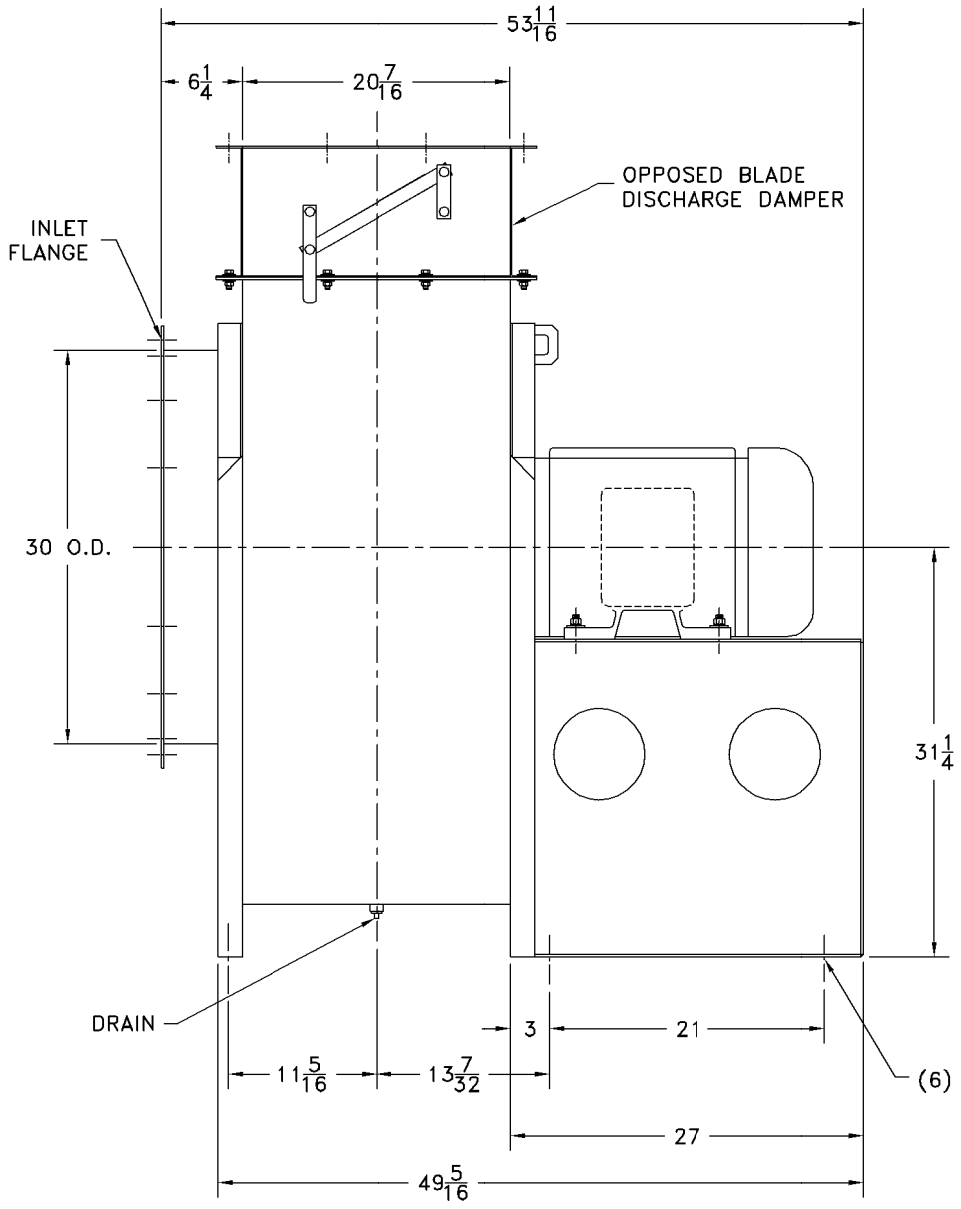
Submittal Email: cbendiksby@avanienvironmental.com



CW UB

DR. BY _____ LG

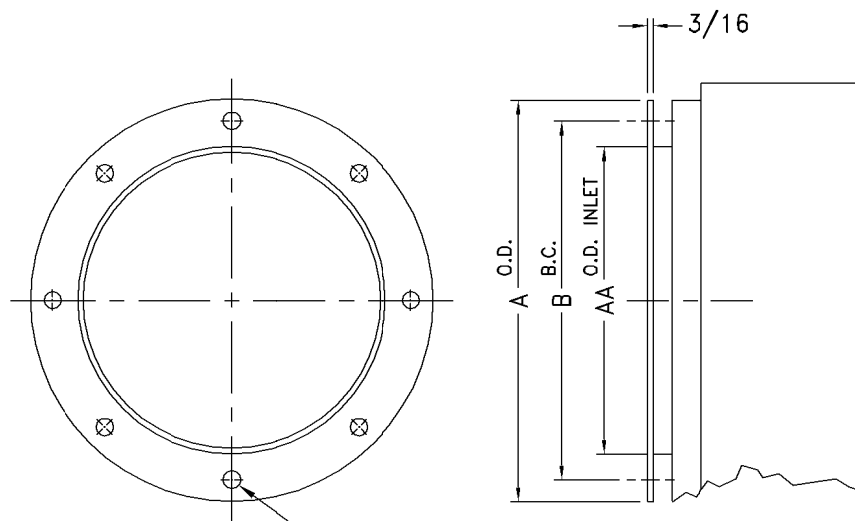
DATE: 11/12/2012 CERTIFIED



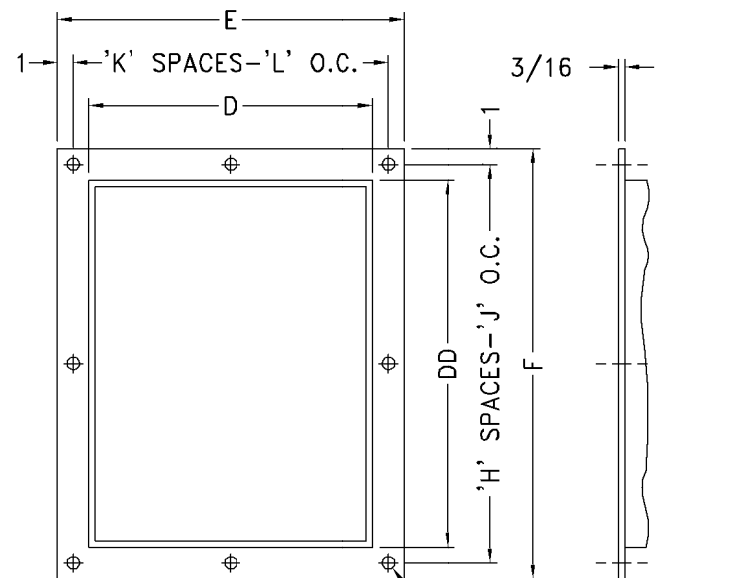
CW ROTATION, UP BLAST DISCHARGE SHOWN

- NOTES:
1. MOTOR: 286T FRAME, 30 HP, 1750 RPM, 60 Hz, TEFC.
 2. SEE DRAWING A27205 FOR FLANGE DETAILS.
 3. TEFLON SHAFT SEAL.
 4. CLASS III WHEEL CONSTRUCTION.

				SUPERSEDES:		TOLERANCES:		SCALE: FULL IN CAD		cincinnati fan 7697 SNIDER ROAD MASON, OHIO 45040	
				SIMILAR TO:		FRACTIONS $\pm 1/8$ ANGLES: $\pm 1^\circ$ DECIMALS: X.XXX = ± 0.005 X.XX = ± 0.060 X.X = ± 0.120		DATE: 11/12/12			
						ALL DIMENSIONS IN INCHES UNLESS OTHERWISE SPECIFIED		DR. BY: DCF		TITLE HDBI-270 ARR. 4 (CW UB) W/ DISCHARGE DAMPER FOR AVANI ENVIRONMENTAL	
								CHK. BY:			
NO.	DESCRIPTION	DATE	INITIALS	MATERIAL:		ASSEMBLY		DRAWING NO.		SHEET	REV.
REVISIONS				CERTIFIED				A 1214335		1 of 1	



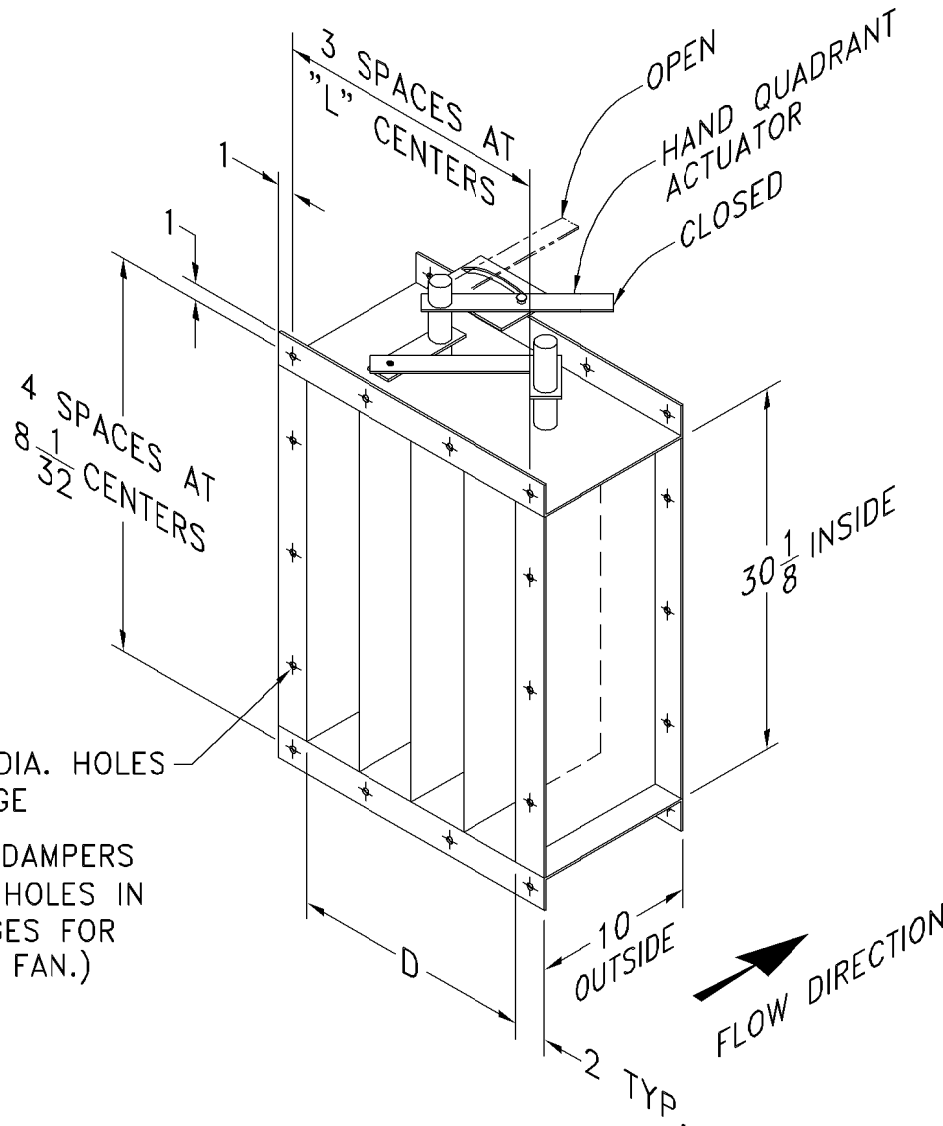
INLET FLANGE "N" HOLES, "P" DIA.



DISCHARGE FLANGE ① "M" 7/16 DIA. HOLES

SIZE	INLET					DISCHARGE								
	A O.D.	B B.C.	N	AA DIA.	P	D	E	F	H	J	K	L	M	DD
120	16	14-3/8	8	13-1/4	7/16	9-3/8	13-3/8	17-11/16	2	7-27/32	2	5-11/16	8	13-3/4
130	17-3/4	15-15/16	8	14-5/8	7/16	10-3/8	14-3/8	19-3/16	2	8-19/32	2	6-3/16	8	15-1/4
150	19-1/4	17-1/2	8	16-1/8	7/16	11-3/8	15-3/8	20-3/4	3	6-1/4	2	6-11/16	10	16-13/16
160	21-1/8	19-3/8	8	18	7/16	12-1/2	16-1/2	22-7/16	3	6-13/16	2	7-1/4	10	18-7/16
180	23-1/2	21-1/2	12	20	7/16	13-7/8	17-7/8	24-1/2	3	7-1/2	2	7-15/16	10	20-3/8
200	25-1/2	23-1/2	12	22	7/16	15-1/4	19-1/4	26-3/8	3	8-1/8	3	5-3/4	12	22-3/8
220	28-1/8	26-1/8	12	24-5/8	7/16	16-7/8	20-15/16	28-7/8	4	6-23/32	3	6-5/16	14	24-7/8
240	30-3/4	28-3/4	16	27	7/16	18-9/16	22-5/8	31-3/8	4	7-11/32	3	6-7/8	14	27-3/8
X 270	33-3/4	31-5/8	16	30	7/16	20-7/16	24-1/2	34-1/8	4	8-1/32	3	7-1/2	14	30-1/16
300	37-1/4	35-1/4	16	33-1/2	7/16	22-3/4	26-3/4	37-5/8	5	7-1/8	3	8-1/4	16	33-9/16
330	40-3/8	38-3/4	16	36-3/4	1/2	24-7/8	28-7/8	40-7/8	7	5-9/16	5	5-3/8	24	36-3/4
360	43-5/8	42	16	40	1/2	27-1/4	31-1/4	44-1/4	7	6-1/32	5	5-27/32	24	40-1/4

NOTE:
 ① NOT AVAILABLE ON ANY MODEL FOR DOWNBLAST, BOTTOM ANGULAR DOWN OR TOP ANGULAR DOWN DISCHARGE POSITIONS.
 DISCHARGE FLANGE IS STANDARD ON SIZES -270 THRU -360.



(14) 7/16 DIA. HOLES EACH FLANGE

(STANDARD DAMPERS HAVE BOLT HOLES IN BOTH FLANGES FOR BOLTING TO FAN.)

NOTES:

1. OPPOSED BLADE IS STANDARD. □ PARALLEL BLADE IS OPTIONAL.
2. DAMPER BLADES WILL BE PERPENDICULAR TO FAN SHAFT.
3. STANDARD MATERIAL IS CARBON STEEL WITH RUST INHIBITING PRIMER. □ OPTIONAL MATERIAL _____.
4. STANDARD CONSTRUCTION MAX. TEMPERATURE: 300° F.
□ OPTIONAL HIGH TEMPERATURE CONSTRUCTION MAX. TEMPERATURE: 800° F.

	% WIDTH	D	L
✗	100	20-1/2	7-1/2
	95	20-1/32	7-11/32
	90	19-15/32	7-5/32
	85	18-29/32	6-31/32
	80	18-11/32	6-25/32
	75	17-7/8	6-5/8
	70	17-5/16	6-7/16
	65	16-27/32	6-9/32
	60	16-9/32	6-3/32
	55	15-23/32	5-29/32
	50	15-5/32	5-23/32
	45	14-19/32	5-17/32

