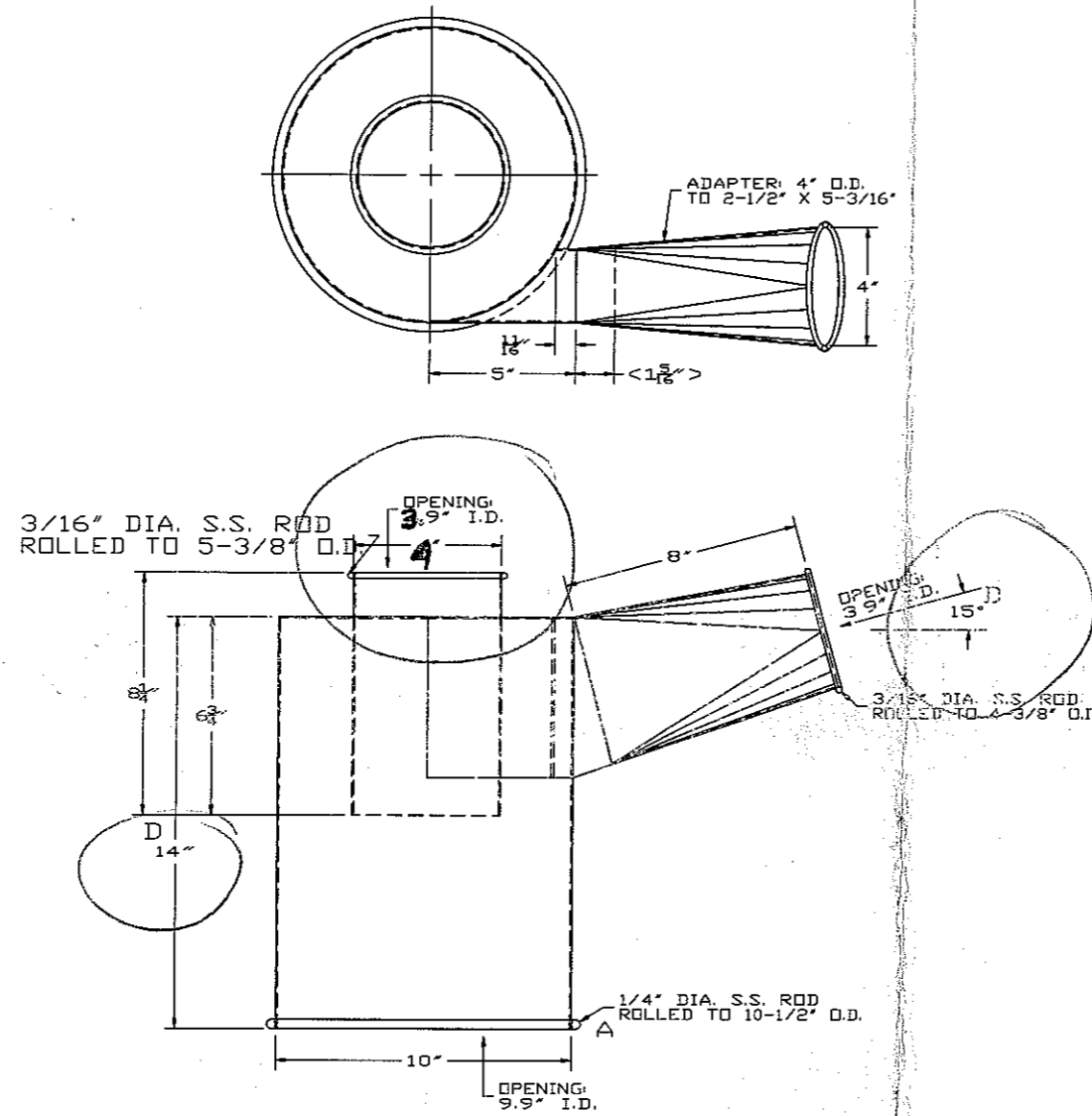
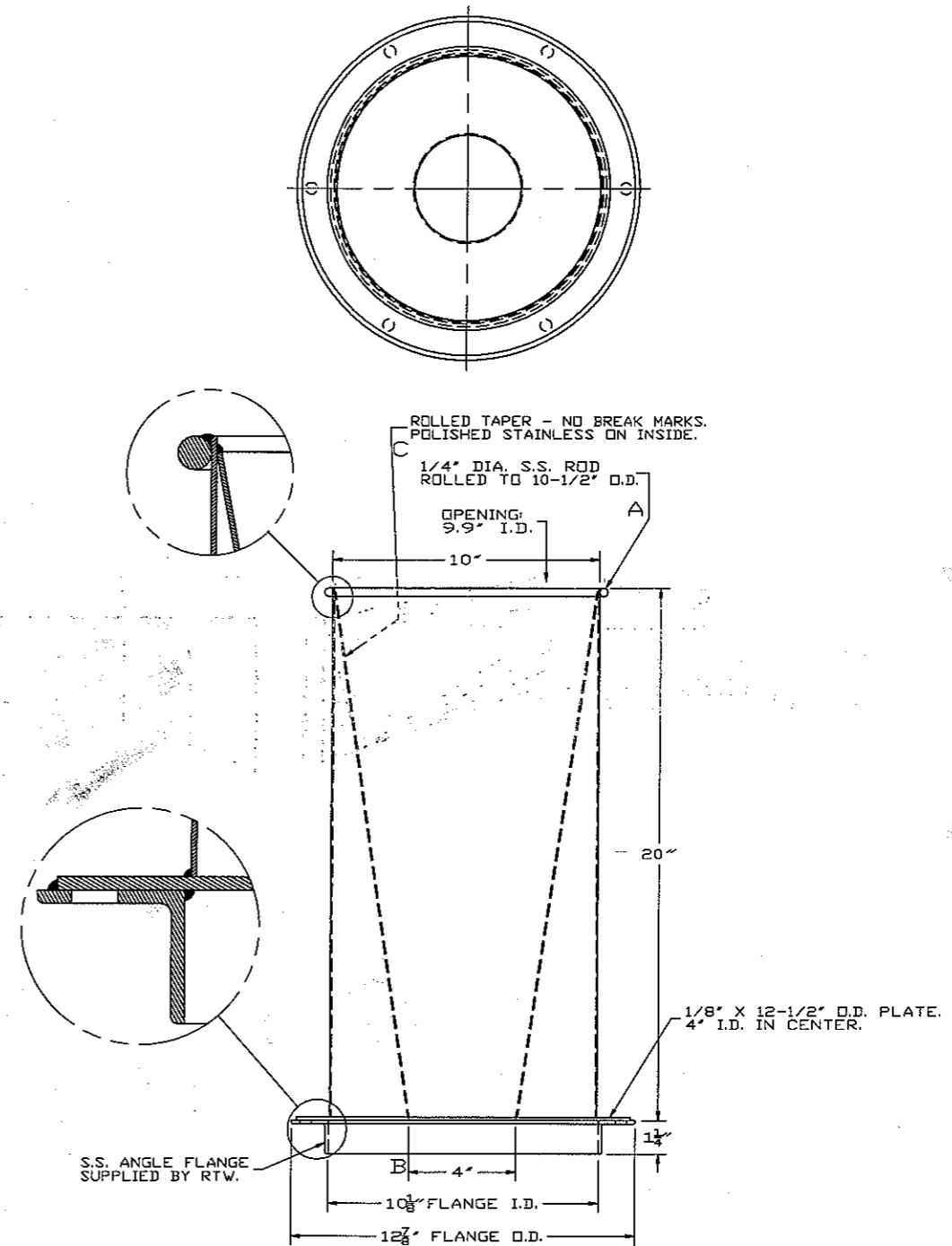


Also
 DEPT (MAINT) CYCLONE-VL.PDF



CYCLONE
 TOP PIECE

ALL 304 STAINLESS STEEL MATERIAL,
 18 GAUGE UNLESS OTHERWISE SPEC.
 CONTINUOUS WELDED JOINTS.



CYCLONE
 BOTTOM PIECE

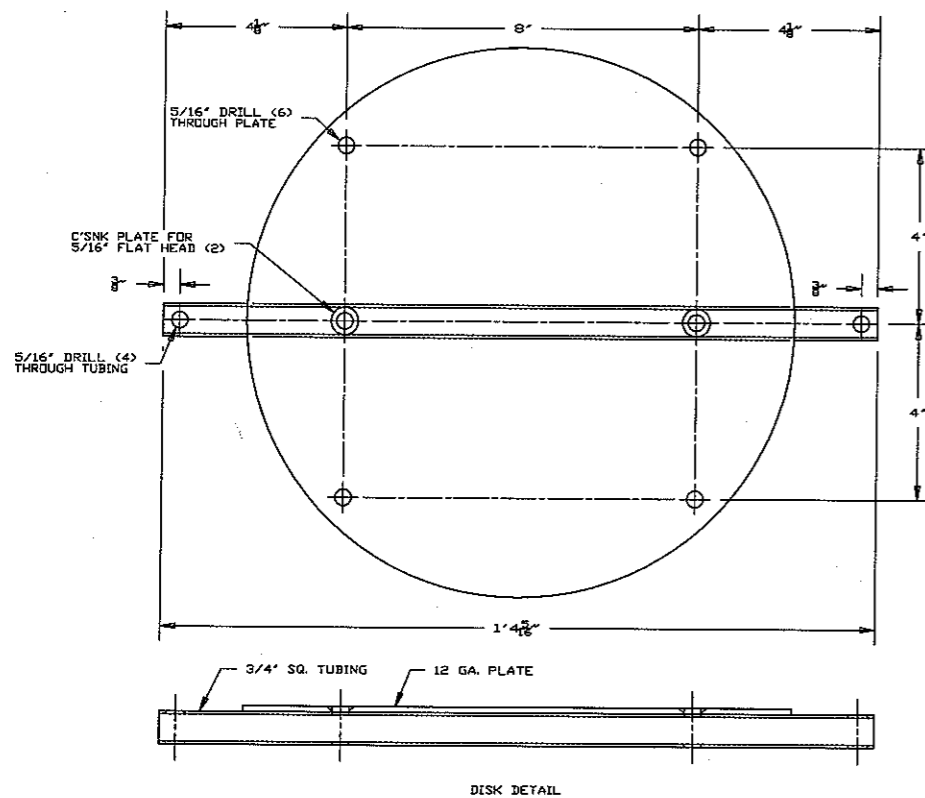
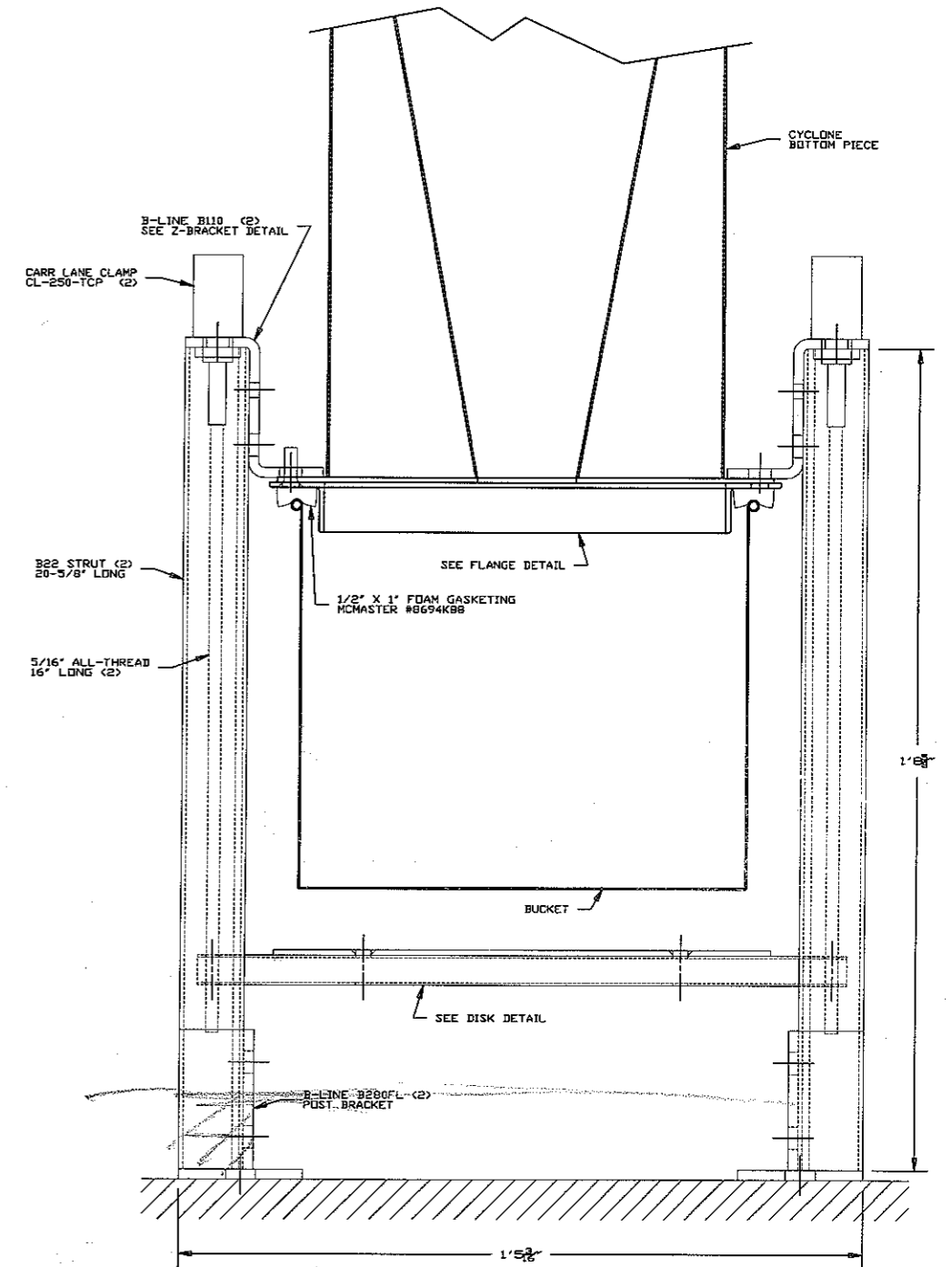
TITLE				
CYCLONE SEPARATOR				
DRAWN BY	DATE	SCALE		
RWJ	12/8/00	1/4		
APPR'D BY	DATE	TOLERANCES		
		±1/16"		
Rogers Tool Works 215 North 13th Street Rogers, Arkansas 72756				
C	ROLL & POLISH TAPER	RWJ	5/02	DRAWING NUMBER VL-35-115-002
B	4" DIA. WAS 2-1/2"	RWJ	5/02	
A	1/4" ROD WAS 5/16"	RWJ	2/01	
LTR	REVISION	BY	DATE	



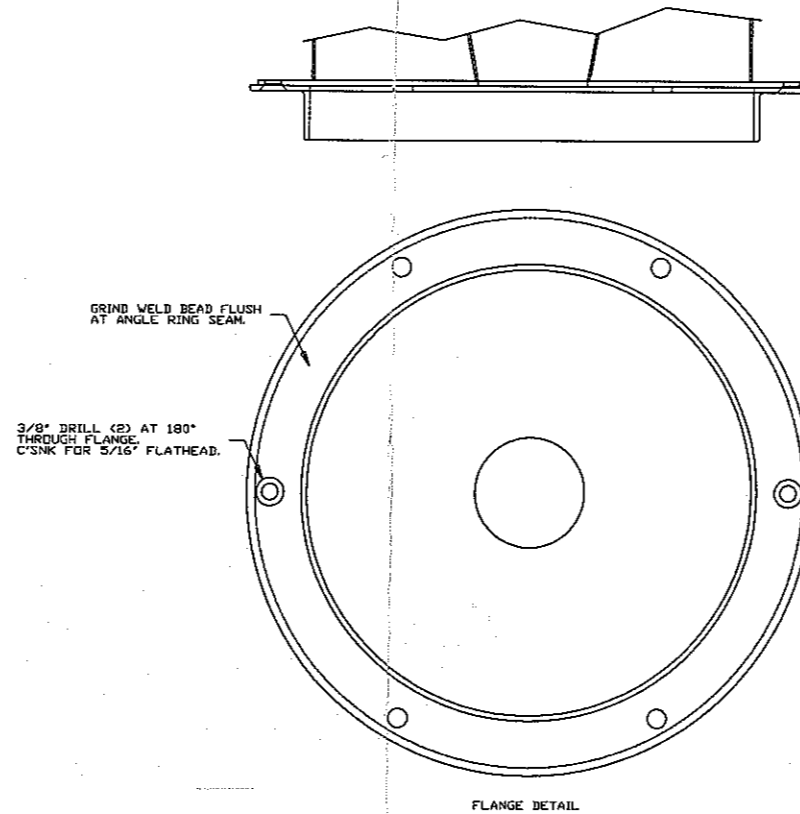
STEP	DESCRIPTION
1	CUT SQUARE TUBING TO LENGTH.
2	CUT TWO ALL-THREAD RODS TO LENGTH.
3	CUT TWO B22 STRUT TO LENGTH.
4	DRILL ONE HOLE THROUGH TWO Z-BRACKETS.
5	ENLARGE ONE HOLE THROUGH TWO Z-BRACKETS.
6	DRILL SIX HOLES THROUGH ROUND DISK.
7	DRILL FOUR HOLES THROUGH SQUARE TUBING.
8	DRILL TWO HOLES THROUGH FLANGE.
9	COUNTERSINK TWO HOLES IN FLANGE.
10	COUNTERSINK TWO HOLES IN ROUND DISK.
11	BOLT ASSEMBLY TOGETHER.
12	MOUNT FOAM STRIP TO FLANGE.

FASTENER DETAIL

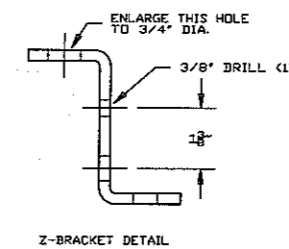
Q'TY	DESCRIPTION
2	5/16" - 18 X 1" FLAT HEAD
2	5/16" - 18 X 1-1/2" FLAT HEAD
2	5/16" - 18 X 1-1/2" CAP SCREW
2	5/16" - 18 X 1" CAP SCREW
2	5/16" - 18 STRUT NUT (TN223)
2	5/16" - 18 HEX NUT
2	5/16" FLAT WASHER
2	5/16" LOCK WASHER



DISK DETAIL



FLANGE DETAIL



Z-BRACKET DETAIL

TITLE			
CYCLONE SEPARATOR BASE ASS'Y			
DRAWN BY	DATE	SCALE	
RVJ	4/18/01	1/2	
APPR'D BY	DATE	TOLERANCES	
Rogers Tool Works 225 North 27th Street Rogers, Arkansas 72756			
FACILITIES ENGINEERING			RTW
DRAWING NUMBER			
LTR	REVISION	BY DATE	45-115-001