



Date: March 27, 2012

To: Johnson Controls

Project:

Attn:

Recommended Equipment:

(1) SDC-20-16MDF Cartridge Collector Drawer Type w/ Feet

- 8,500CFM @ 8" SP
- normal 12" x 52"L polyester cartridges
- silencer
- VFD

(1) Roll Media: RM-6000

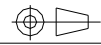
Avani Environmental Intl. Inc.
95 Cypress Drive
Youngsville, NC 27596
www.avanienvironmental.com

Phone: (919) 570-2862
Fax: (919) 570-2863
Email: info@avanienvironmental.com
www.weldingbooths.com

The drawings, AutoCAD, 3-D Models, and specifications are the property of Avani Environmental Intl. Inc. (AE) and may not be reproduced, distributed, modified, or otherwise used, except provided herein, without the express written permission of AE.

DO NOT SCALE

IF IN DOUBT ASK



Revisions			
Rev	Description	Date	Approved

- SDC-20-16MDF SPECIFICATION -

- Direct Drive Blower (on the machine top)
- Motor: 20HP x 1 pc
- CFM: 8,500 ft³/min @ 8" SP
- Include:
 - UL Individual Control Boxes for Cartridge Collector and Blowers

- ***Inlet: dia. 450 mm (dia. 17.7")
- Cartridge Filter: Dia. 325mm x 1320mm x 16pcs (Dia. 12.8" x 52" x 16pcs)
- Material: Polyester with TEFLON coating.
- Filter Area: 19m² x 16 = 304m² (3271.04 ft²)
- Pleat Depth: 48mm

- Horizontal Positioned Filters,
- Continuous Welded Seams,
- Gasket and Latched Doors,
- Powder Coated Paint and
- Reverse Jet Pulse Cleaning
- Include:
 - Filter Chamber
 - Inlet Square Pipe (need dimensions)
 - Fan/motor combinations

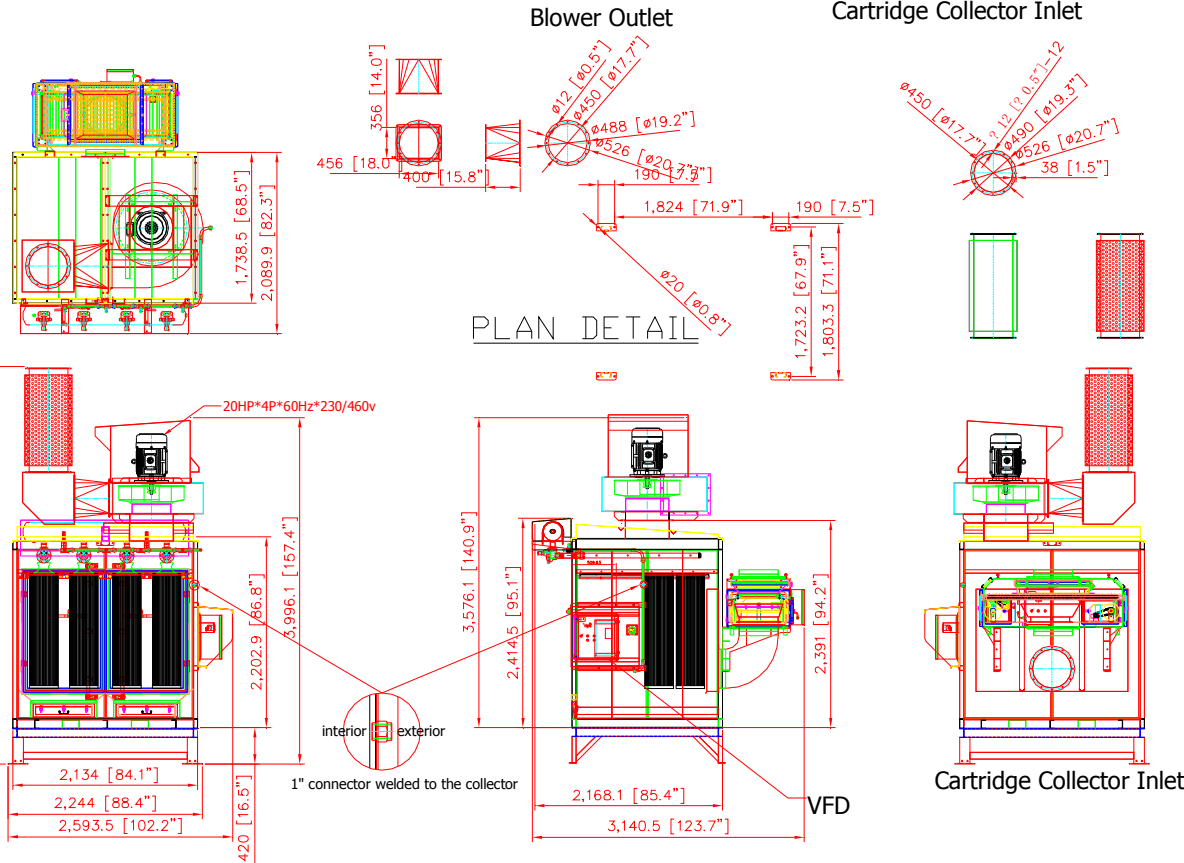
- No. of Valves: 4
- Inlet Air: 4"
- Compressed Air Requirement: 90 PSI
- Compressed Air Reservoir: 15.8 gallon
- Dimension: 102.2" x 123.7" x 180.6" (2593.5 x 3140.5 x 4584.8mm)
- Construction: 13 Gauge for panel; 11 Gauge Steel Cabinet
- Max. Operating Temp.: 120°C
- Paint Color: Blue

- ***with Feet underneath the machine.
- ***1" connector welded to the right side of the collector when facing the unit.

- ***w/ silencer.
- ***Roll Media: RM-6000
- ***VFD

- ***Pulse Control Box: run off of 120V / 60Hz/ 1-phase, no transformer inside the pulse box. Pulse Box located inside the building on the collector.

- ***Blower Control Box 460V / 60Hz / 3-phase, with transformer. Blower box located inside the building.



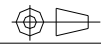
AVANI ENVIRONMENTAL INTL. INC. Sales Department
 95 Cypress Drive (919) 570-2862
 Youngsville, NC 27596 info@avanienvironmental.com

	Date	Name	Part Number:	Title:
Drawn by:	2012-03-27	***	SDC-20-16MDF	Cartridge Collector (drawer type) w Feet
Checked by:				
The drawings, AutoCAD, 3-D Models, and specifications are the property of Avani Environmental Intl. Inc. (AE) and may not be reproduced, distributed, modified, or otherwise used, except provided herein, without the express written permission of AE.				Size
				A

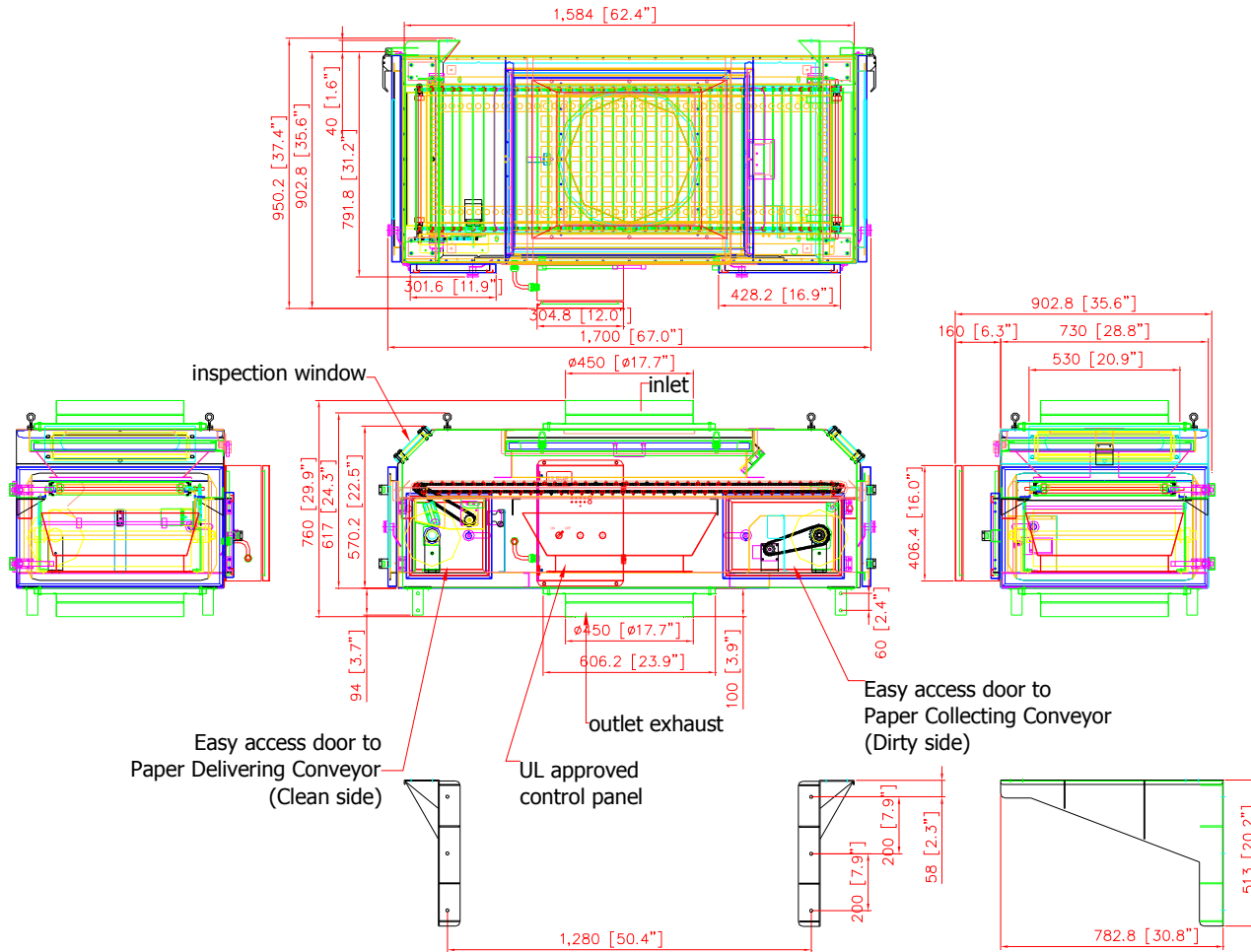
Scale	1 = 1	Drawing Number:	SVL-1600-01
-------	-------	-----------------	-------------

DO NOT SCALE

IF IN DOUBT ASK



Revisions			
Rev	Description	Date	Approved



- RM-6000 ROLL MEDIA SPECIFICATIONS -

Filtration Stages:

1. stainless net
 - spec: 635 x 842 mm (25" x 33.2")
 - required quantity: 1 pc
2. aluminum mesh
 - spec: 640 x 845 x 22 mm (25.2" x 33.3" x 0.87")
 - required quantity: 1 pc
3. roll media
 - required quantity: 1 pc

- Dimension: 67" x 37.4" x 29.9" (1700 x 950.2 x 760mm)
- Construction: 16 Gauge
- Max. Operating Temp.: 120°C
- Paint Color: powder coated Blue
- UL control box
- Inlet Port: dia. 17.7" x 1 hole
- Outlet Port: dia. 17.7" x 1 hole

Optional Accessory

- optional wall-mounting brackets

AVANI ENVIRONMENTAL INTL. INC. Sales Department
 95 Cypress Drive
 Youngsville, NC 27596
 (919) 570-2862
 info@avanienvironmental.com

	Date	Name	Part Number:	Title:
Drawn by:	2011-02-16	***	**	Roll Media RM-6000
Checked by:				
The drawings, AutoCAD, 3-D Models, and specifications are the property of Avani Environmental Intl. Inc. (AE) and may not be reproduced, distributed, modified, or otherwise used, except provided herein, without the express written permission of AE.				Drawing Number:

Size
A

Scale
1 = 16

Drawing Number:

