



**Date:** September 30, 2011

**To:** Los Angeles Trade Technical College

**Project:**

**Attn:**

**Recommended Equipment:**

(1) WB-5000 series Welding Booth (IBB): each booth 4'W x 5'D x 10'H

- fixture
- torch holder
- stool (swing underneath while not in use)
- cutting table with fire bricks

---

**Avani Environmental Intl. Inc.**  
95 Cypress Drive  
Youngsville, NC 27596  
[www.avanienvironmental.com](http://www.avanienvironmental.com)

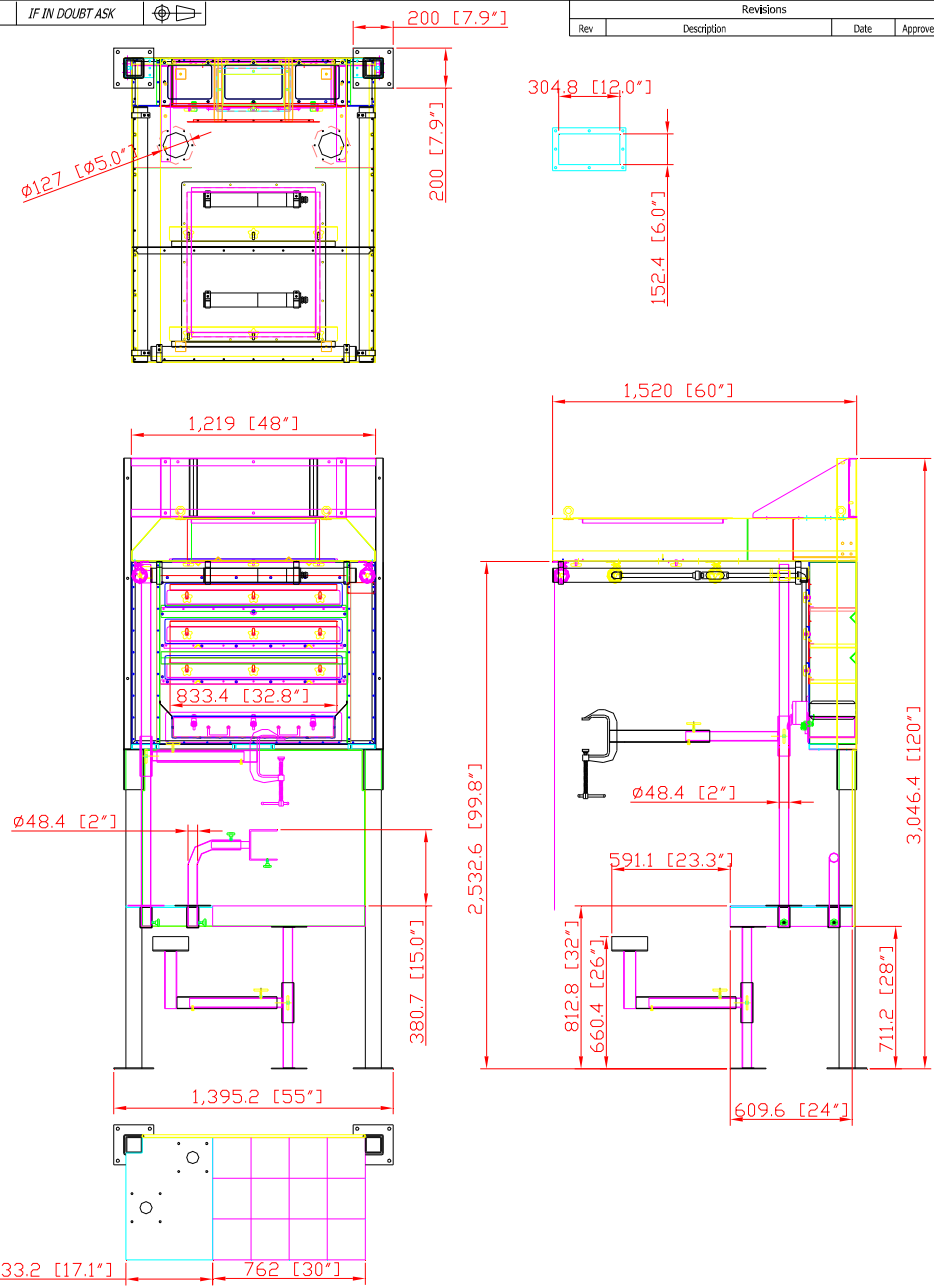
Phone: (919) 570-2862  
Fax: (919) 570-2863  
Email: [info@avanienvironmental.com](mailto:info@avanienvironmental.com)  
[www.weldingbooths.com](http://www.weldingbooths.com)

The drawings, AutoCAD, 3-D Models, and specifications are the property of Avani Environmental Intl. Inc. (AE) and may not be reproduced, distributed, modified, or otherwise used, except provided herein, without the express written permission of AE.

DO NOT SCALE IF IN DOUBT ASK

Revisions

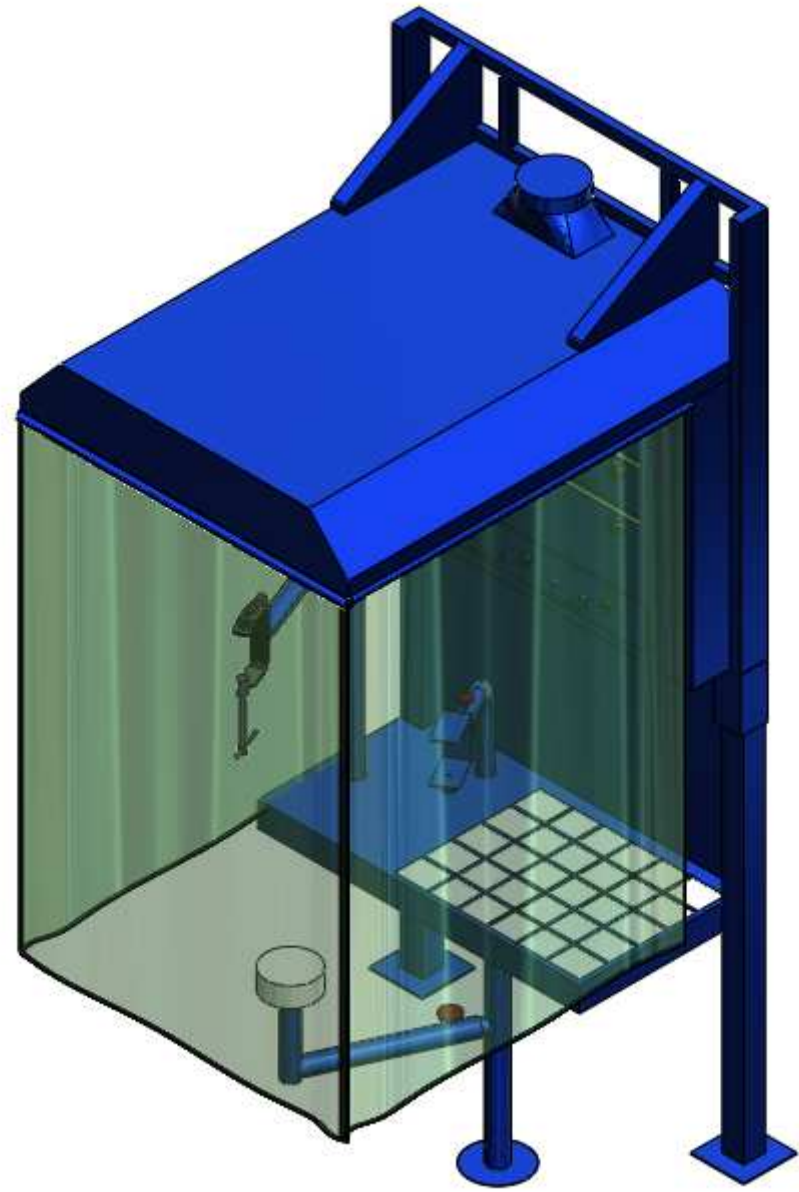
| Rev | Description | Date | Approved |
|-----|-------------|------|----------|
|     |             |      |          |

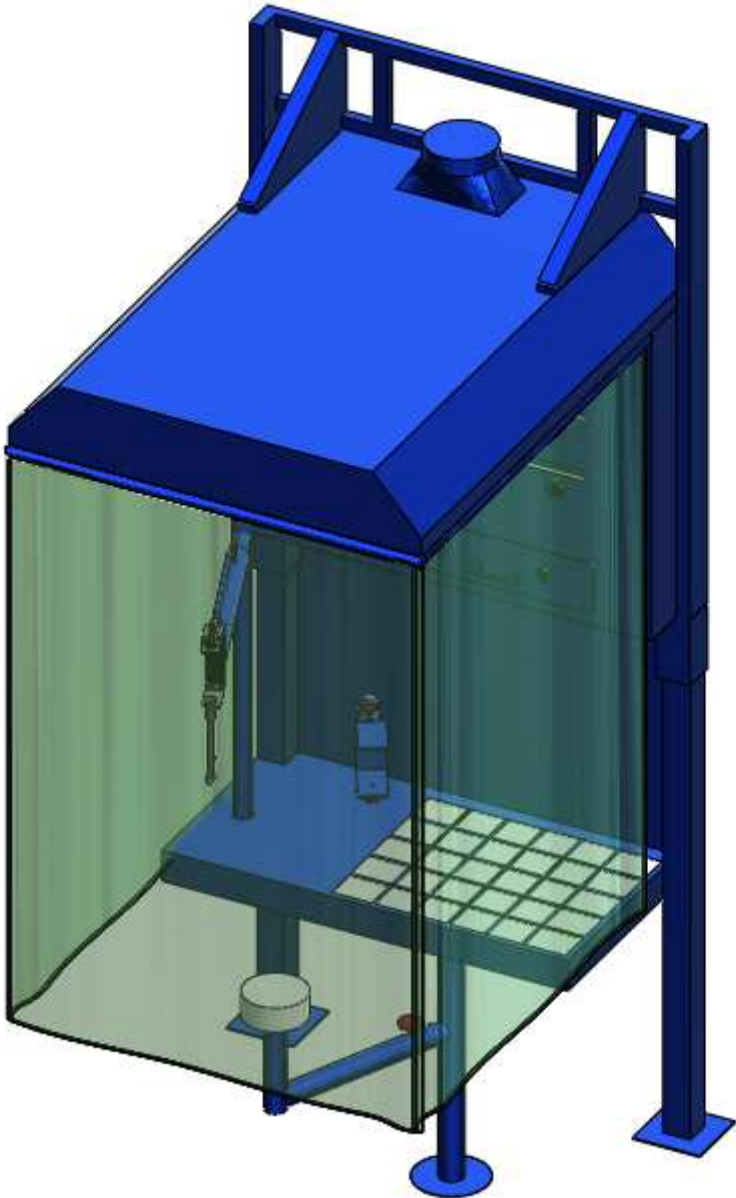


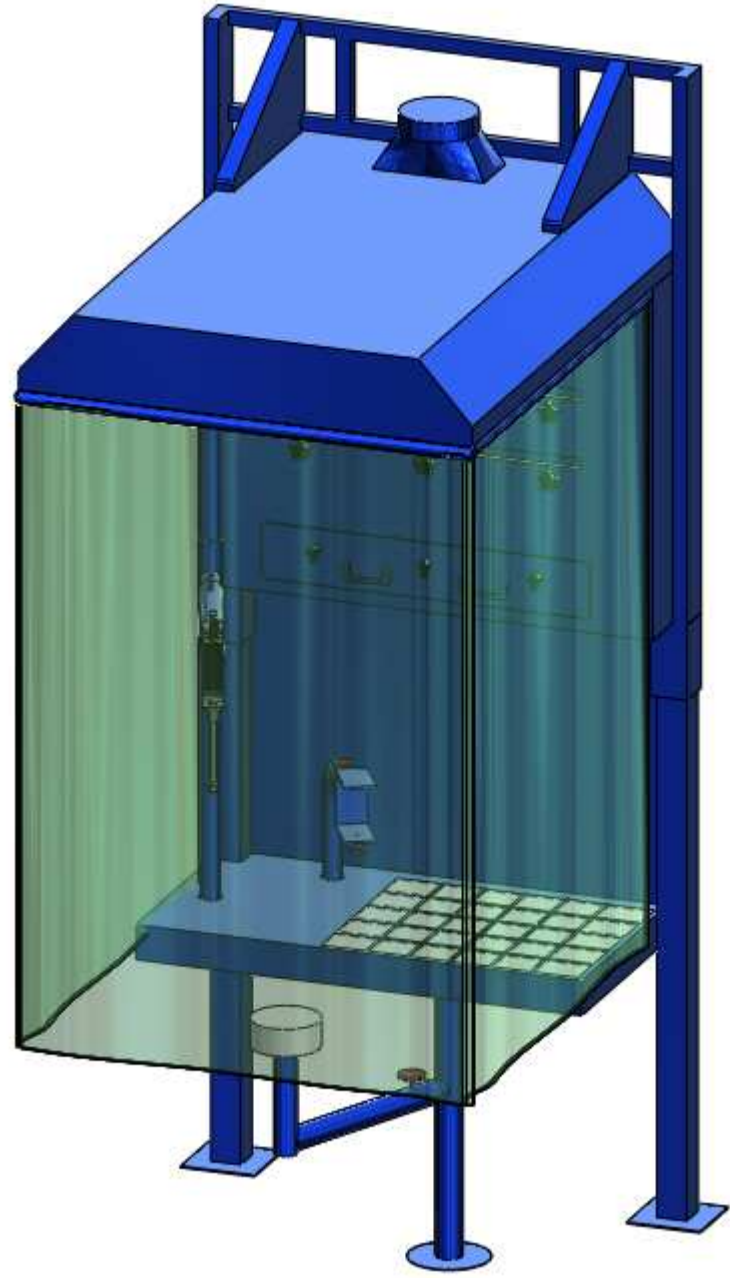
AVANI ENVIRONMENTAL INTL. INC. Sales Department  
 95 Cypress Drive  
 Youngsville, NC 27596  
 (919) 570-2862  
 info@avanienvironmental.com

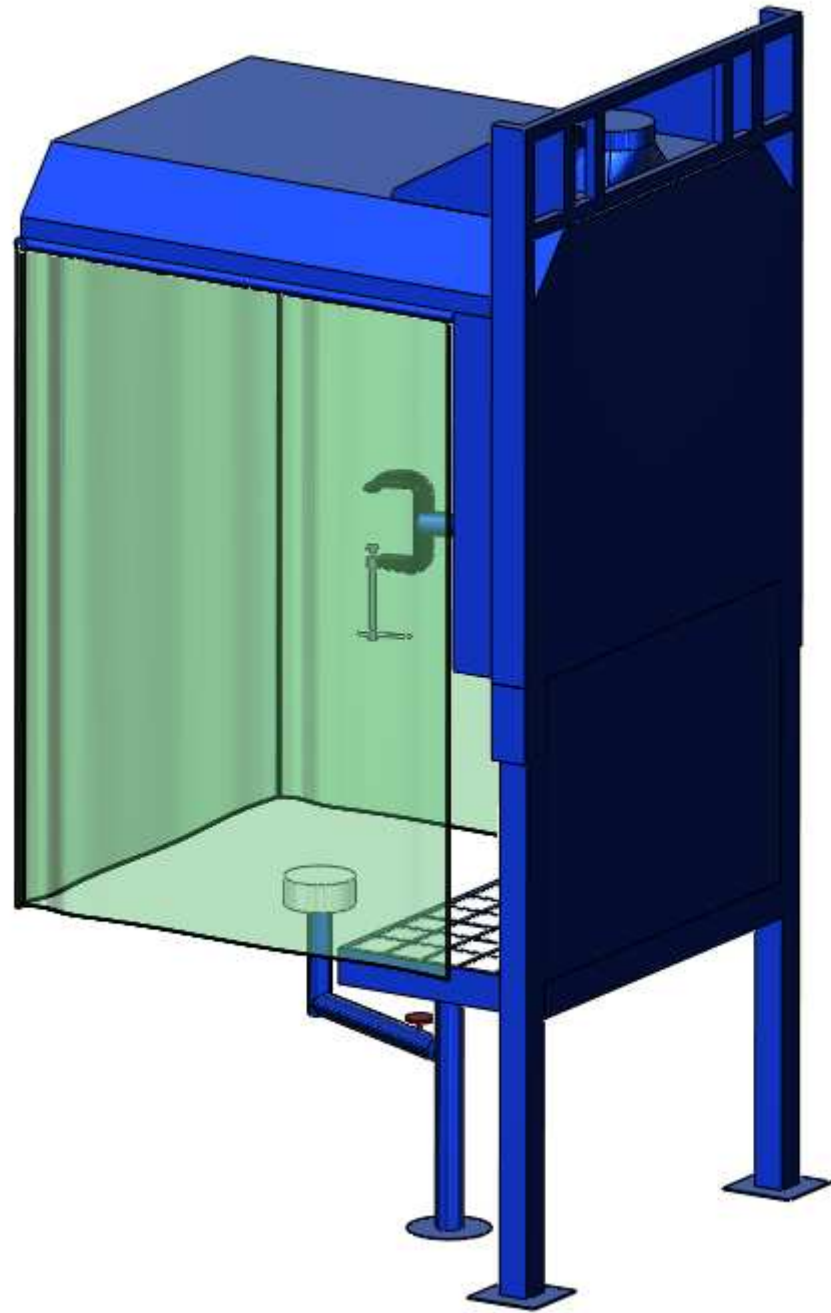
|  |            |      |              |
|--|------------|------|--------------|
| Drawn by:  | Date       | Name | Part Number: |
| Checked by:  | 2011-09-30 | ***  | ***          |
| The drawings, AutoCAD, 3-D Models, and specifications are the property of Avani Environmental Intl. Inc. (AE) and may not be reproduced, distributed, modified, or otherwise used, except provided herein, without the express written permission of AE. |            |      |              |

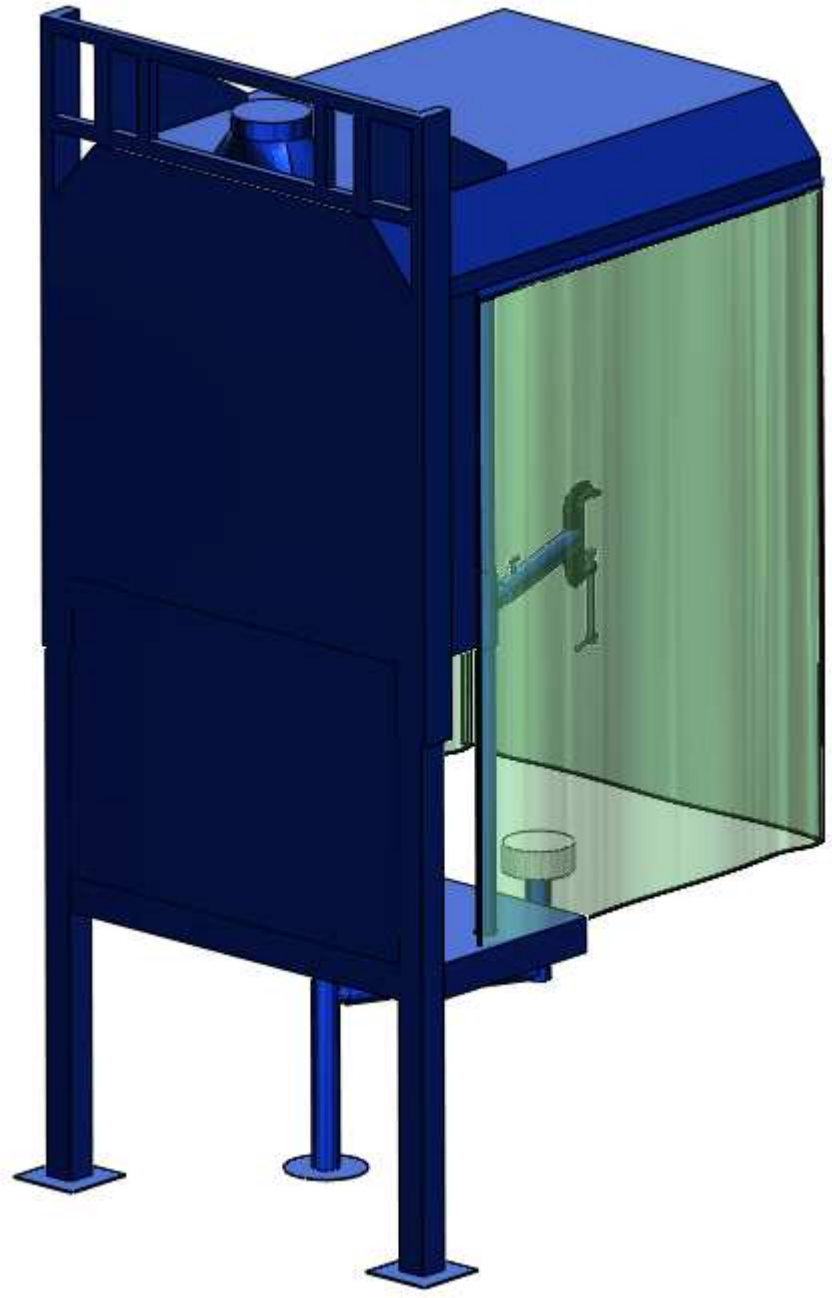
|                 |  |
|-----------------|--|
| Title:          | WB-5000 series (IBB): 4'W x 5'D x 10'H |
| Size            | Scale                                  |
| A               | 1 = 25                                 |
| Drawing Number: | WB-4x5x10IBB                           |

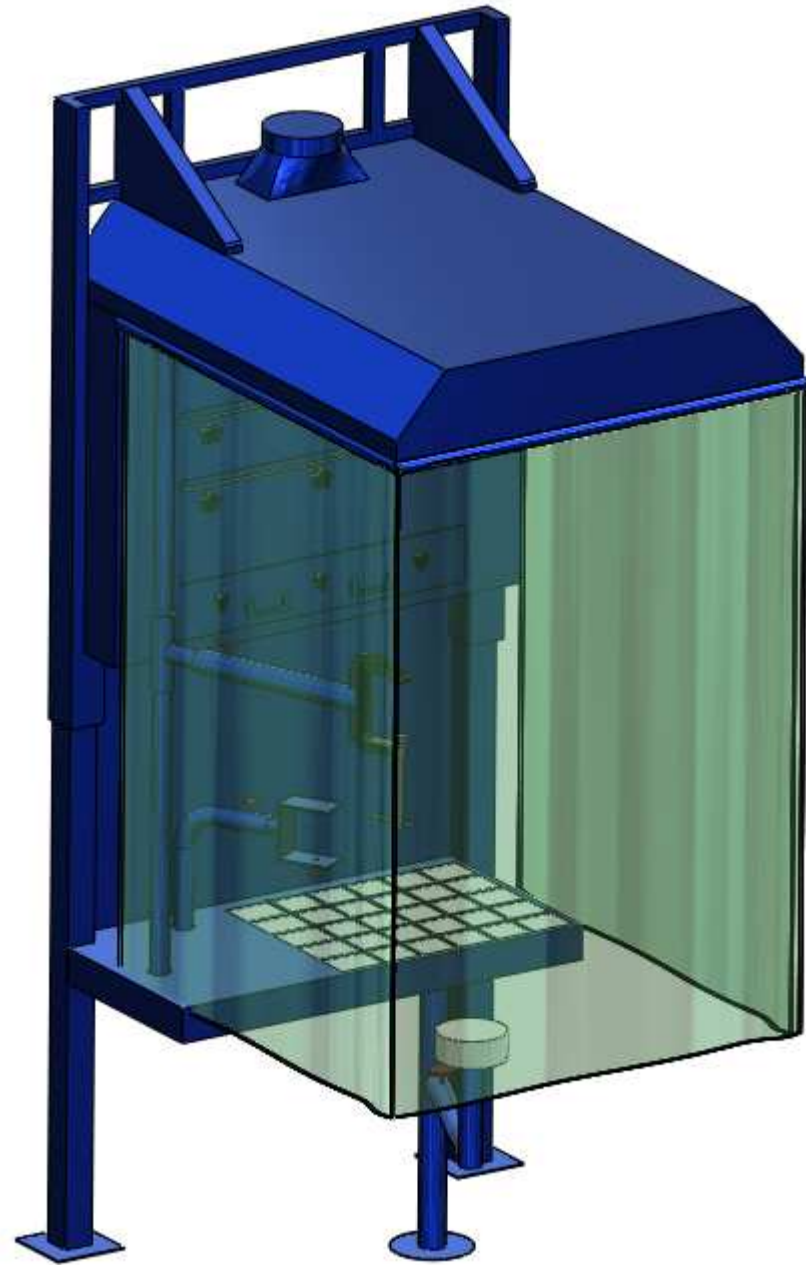




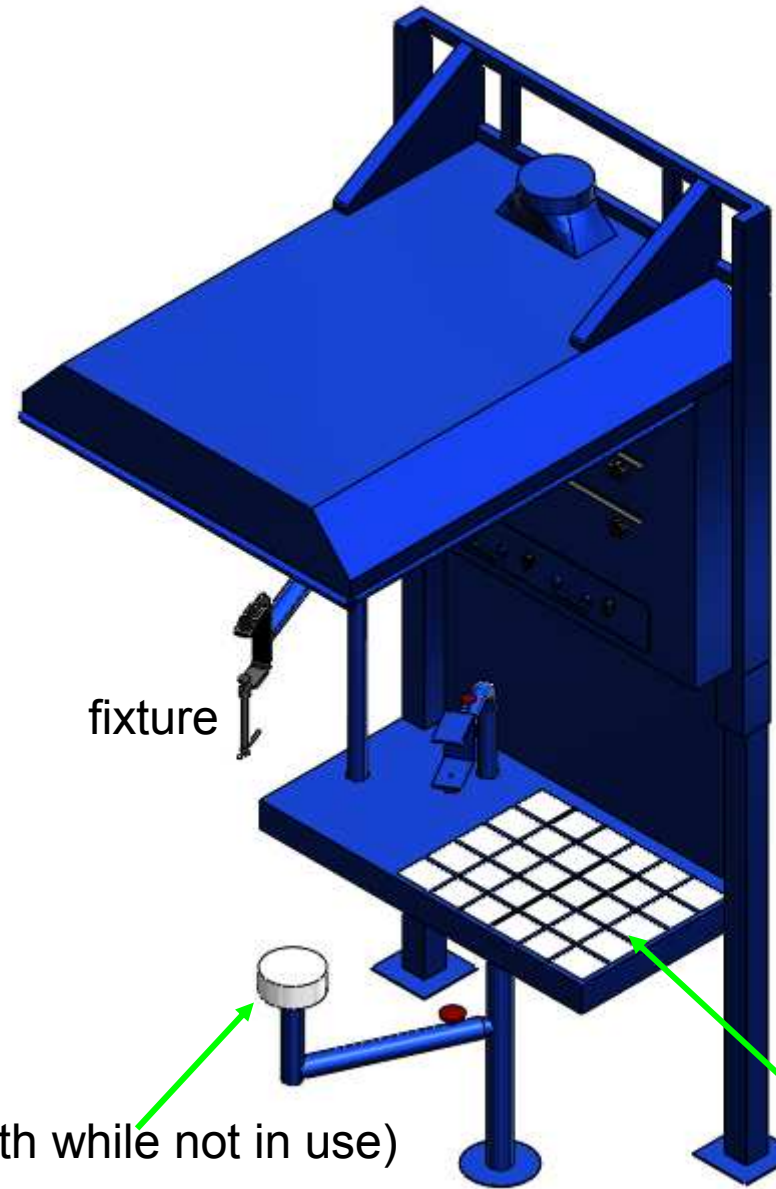












fixture

torch holder

stool (swing underneath while not in use)

cutting table with fire bricks



