



**Date:** October 04, 2011

**To:** Los Angeles Trade Technical College

**Project:**

**Attn:**

**Recommended Equipment:**

(10) WB-6000 series Welding Booth: each booth 6'W (ID) x 5'D

- fixture
- fixture table (right corner)
- removable shelf
- (2) gas lines
- side panels: solid hard walls
- (1) light switch: on right panel

---

**Avani Environmental Intl. Inc.**  
95 Cypress Drive  
Youngsville, NC 27596  
[www.avanienvironmental.com](http://www.avanienvironmental.com)

Phone: (919) 570-2862  
Fax: (919) 570-2863  
Email: [info@avanienvironmental.com](mailto:info@avanienvironmental.com)  
[www.weldingbooths.com](http://www.weldingbooths.com)

The drawings, AutoCAD, 3-D Models, and specifications are the property of Avani Environmental Intl. Inc. (AE) and may not be reproduced, distributed, modified, or otherwise used, except provided herein, without the express written permission of AE.

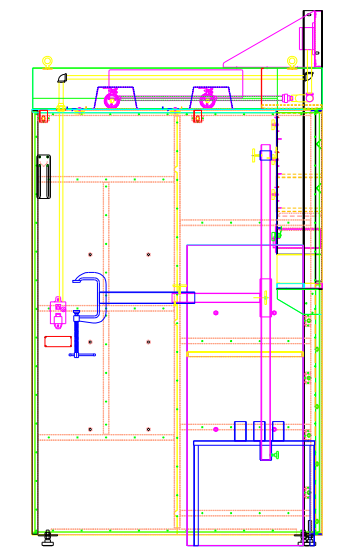
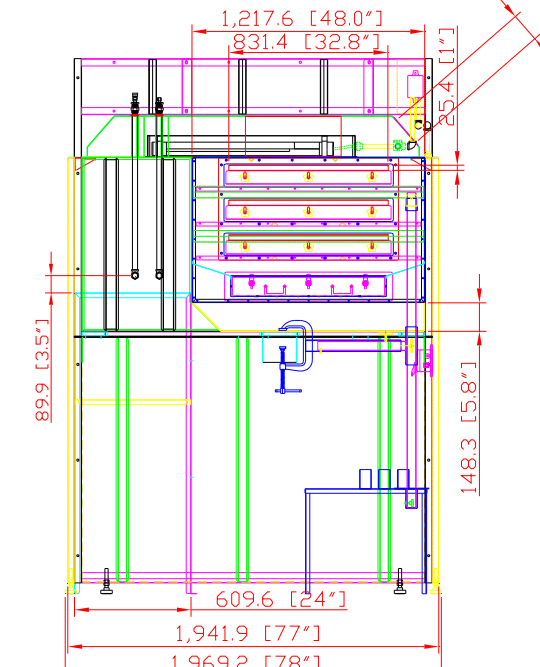
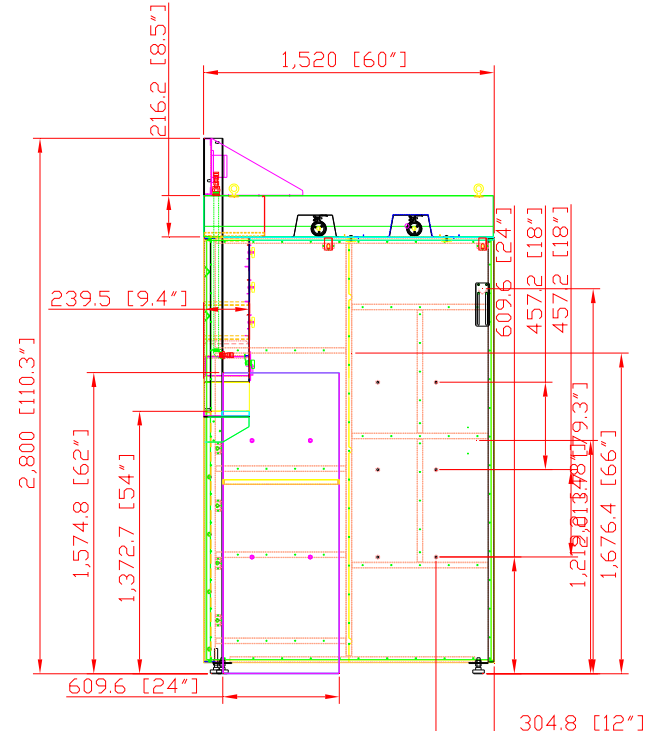
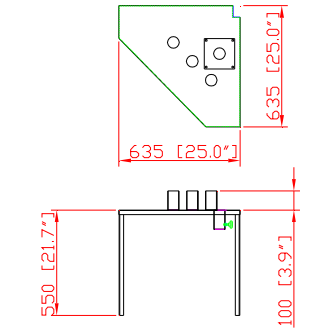
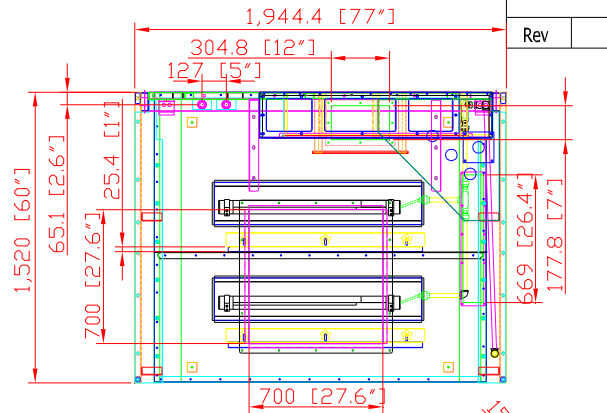
DO NOT SCALE

IF IN DOUBT ASK



Revisions

Rev	Description	Date	Approved
-----	-------------	------	----------



AVANI ENVIRONMENTAL INTL. INC. Sales Department

95 Cypress Drive

Youngsville, NC 27596

(919) 570-2862

info@avanienvironmental.com

Date	Name	Part Number:
2011-10-04	***	LATTC: 6'W (ID)
Checked by:		

Title: WB-6000 series: 6'W (ID) x 5'D

The drawings, AutoCAD, 3-D Models, and specifications are the property of Avani Environmental Intl. Inc. (AE) and may not be reproduced, distributed, modified, or otherwise used, except provided herein, without the express written permission of AE.

Size	Scale	Drawing Number:
C	1 = 35	WB-6-5P

