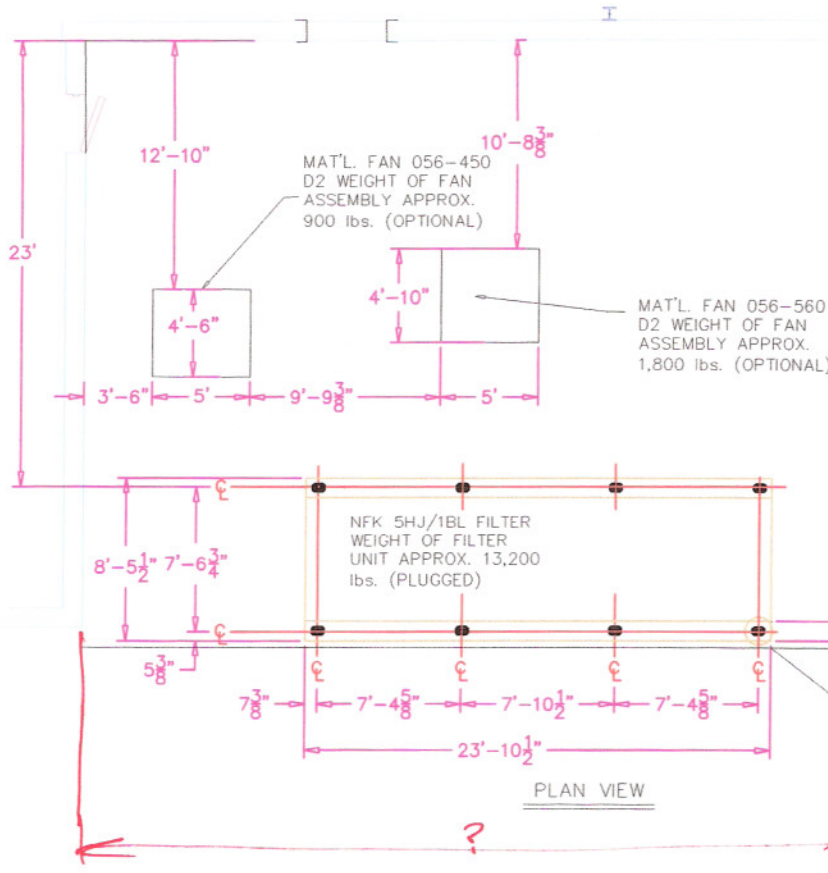


NFK 5HJ/1BL FILTER



APPROVED FOR CONSTRUCTION

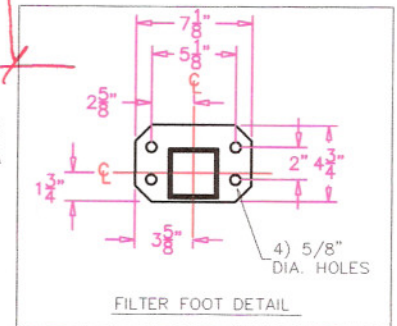
BY: *Chuck M...*

FOR: *IAQ*

DATE: *11-1-06*

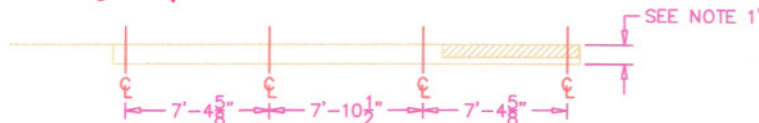
WITH CORRECTIONS/CHANGES AS NOTED

1' TYP. (OPTIONAL)



NOTE: OPTION OF (1) CONCRETE PAD 8'-5 1/2" x 23'-10 1/2" OR (2) CONCRETE PADS 12" x 23'-10 1/2"

PLEASE DIMENSION PAD & IN CASE THEY TO POOR OVERALL PAD WANT THE ENTIRE AREA.



VIEW B - B

- 1 - DETERMINATION OF CONCRETE FOOTINGS, SIZE, DEPTH, AND MASS TO BE THE RESPONSIBILITY OF GENERAL BASED ON LOCAL SOIL CONDITIONS, WIND LOADS, AND LOAD INFORMATION PROVIDED ON DRAWINGS.
- 2 - IT IS IMPORTANT THAT FILTER PIERS AND FAN PADS BE LEVEL IN ALL PLANES.
- 3 - HOLES IN WALL FOR RETURN AIR AND MAIN TRUNK LINES SHOULD NOT BE MADE UNTIL AFTER THE FILTER IS SET AND HOLES ARE MARKED.
- 4 - PENETRATIONS OF BUILDING FOR ABOVE HOLES TO BE MADE BY OTHERS. ANY FLASHINGS THAT IS REQUIRED TO MATCH BUILDING EXTERIOR AND WATERPROOFING BY OTHERS.
- 5 - NO ANCHORS REQUIRED FOR FILTER OR FAN PADS. FILTER AND FAN ASSEMBLIES TO BE MOUNTED CONCRETE THUNDERSTUDS OR CHEMICAL ANCHORS.

TOLL FREE: 800.533.5286
PHONE: 336.821.0800
FAX: 336.821.0890



102 TRANSIT AVENUE
P.O. BOX 429
THOMASVILLE, N.C. 27361-0429

SCALE: 1"=10'-0"
DATE: 6-1-2005
DWG. NO.: 1A150503

APPROVED FOR CONSTRUCTION

BY: *Chuck Marston*FOR: *IAQ*DATE: *11-1-06*

WITH CORRECTIONS/CHANGES AS NOTED

CUSTOMER TO LOCATE ALL PANELS
(ALL PANELS MUST BE UNDER ROOF)SEE DWG. NO.1A150511
FOR ELECTRICAL DATA25, 65 HP. 460V., 3 PH., 60
HZ. MOTOR STARTERS6 COND. CONTROL CKT.
TO FILTER CONTROL PANELNFK FILTER
CONTROL PANEL
30"H x 24"W x
8"D*NFK CONTROL
PANEL TO BE
DUAL LANGUAGE
TOUCH SCREEN
ENGLISH &
FRENCH*

A

(5) ACCESS/EXPLOSION RELIEF DOORS
ON THIS SIDE OF FILTERREGENERATION FANS W/ 2
HP. 460V., 3 PH. TEFC
MOTOR (M1)38"Ø STACK
AND TRANSITION
BY OTHERS*PANTHERM TO SUPPLY
TEE FITTINGS*7'-6 $\frac{3}{4}$ "

A

B

7'-4 $\frac{5}{8}$ " 7'-10 $\frac{1}{2}$ " 7'-4 $\frac{5}{8}$ "

ACCESS LADDER

BACK BLAST DAMPER SEE
DWG. NO.1A150001 FOR
DETAILSBAG ACCESS PLATFORM
ON THIS SIDE OF FILTER

INLET MODULE

PLAN VIEW

SEE DWG. NO.1A150503 FOR
CONCRETE PAD DETAILSREGENERATION FANS W/
2 HP. 460V., 3 PH.
TEFC MOTOR (M1)(5) ACCESS/EXPLOSION
RELIEF DOORS OTHER
SIDE OF FILTERSPRINKLER SYSTEM FOR
FILTER SYSTEMCHAIN MOTION SENSOR 2
COND., 24VDC. CONTROL TO
BE ELECTRICALLY CONNECTED
SO IF CHAIN STOPS SYSTEM
WILL SHUT DOWN. (CMS1)CHAIN DRIVE MOTOR
1 1/2 HP. 460V., 3 PH.
TEFC MOTOR (CD1)NRS-10 ROTARY AIRLOCK
W/1 HP. 460V., 3 PH.
TEFC MOTOR (RV1)
(OPTIONAL)

INLET MODULE

BACK BLAST DAMPER
SEE DWG. NO.1A150001
FOR DETAILS

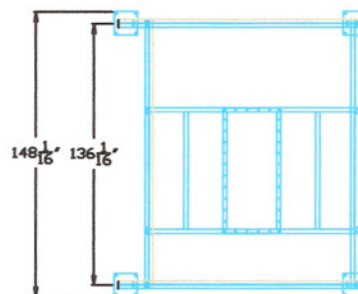
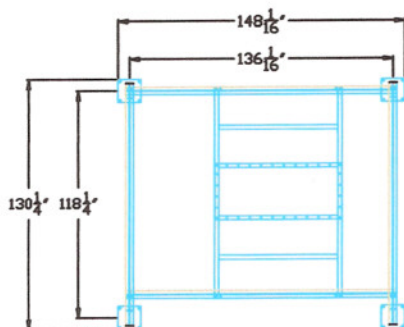
Ø OF AIR OUTLET DUCT

ACCESS LADDER

17'-7 $\frac{5}{8}$ " 18'-9 $\frac{1}{8}$ "5'-6 $\frac{3}{4}$ "3'-10 $\frac{3}{4}$ "7'-4 $\frac{5}{8}$ " 7'-10 $\frac{1}{2}$ " 7'-4 $\frac{5}{8}$ "

VIEW B - B

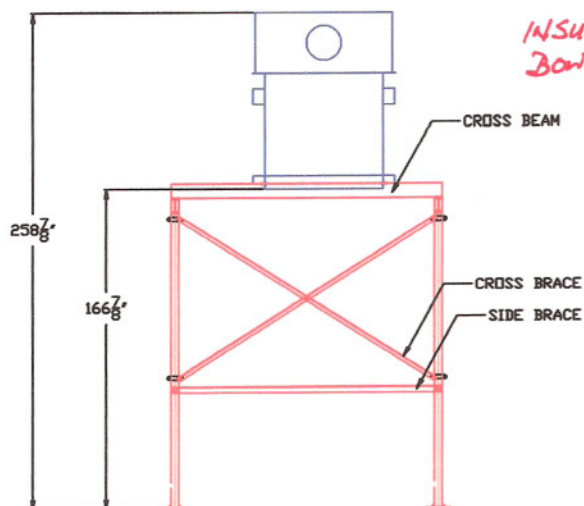
** NOTE: O&M MANUAL
NEEDS A FRENCH
TRANSLATION*TOLL FREE: 800.533.5286
PHONE: 336.821.0800
FAX: 336.821.0890102 TRANSIT AVENUE
P.O. BOX 429
THOMASVILLE, N.C. 27361-0429SCALE: 1"=10'-0"
DATE: 6-1-2005
DWG. NO.: 1A150502



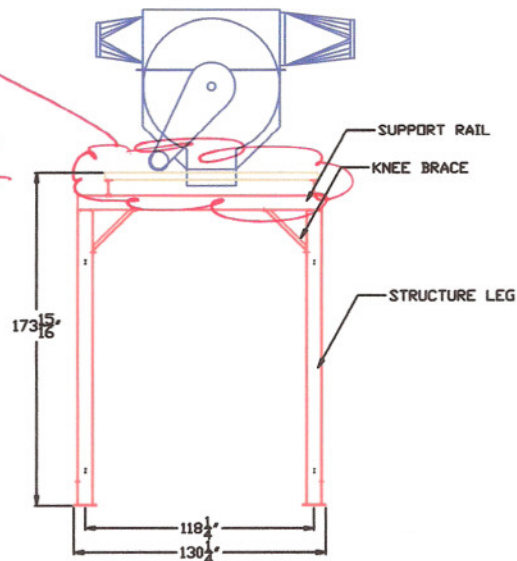
APPROVED FOR CONSTRUCTION

BY: Chuck M...FOR: IAQDATE: 11-1-06

WITH CORRECTIONS/CHANGES AS NOTED



INSURE NO
BOWING OR
SAGGING
W/THIS
BEAM



102 Transit Ave.
Thomasville, NC 27360
TEL: (336) 821-0800
FAX: (336) 821-0890

Drawn by:	Date	Name
05/08/06	R.SASSER	
Checked by:		

Part Number:
PART NO.

Title:
NFV-20 STRUCTURE

This drawing is confidential and is the exclusive property of Danterm Filtration. No unauthorized use/copy or disclosure is to be made and it is returned whenever required.

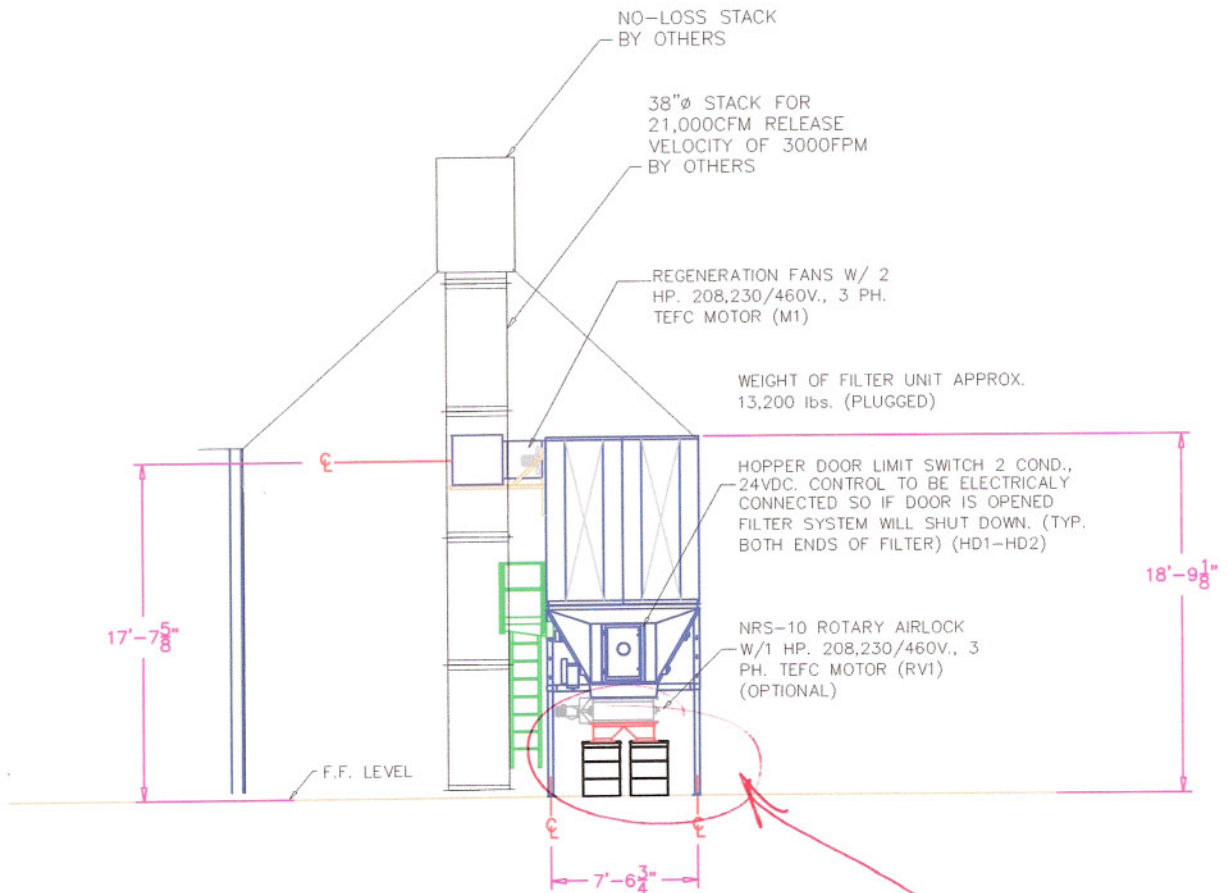
Size	Scale
A	1/8" = 1'

Drawing Number:
LEAR-D

APPROVED FOR CONSTRUCTION

BY: Chk MFOR: IAQDATE: 11-1-06

WITH CORRECTIONS/CHANGES AS NOTED



VIEW A - A

DRUMS & TRANSITION
BY DANTHERM
PLEASE USE THE
NFP STYLE
DRUMS W/
HANDLES &
VIEWING GLASS

TOLL FREE: 800.533.5286
PHONE: 336.821.0800
FAX: 336.821.0890



102 TRANSIT AVENUE
P.O. BOX 429
THOMASVILLE, N.C. 27361-0429

SCALE: 1"=10'-0"
DATE: 6-1-2005
DWG. NO.: 1A150501

NOTES:

- 1 - CONTROL PANELS, MOTORS AND CONTROLS, TO BE SUPPLIED BY DANTHERM FILTRATION, INC.
- 2 - POWER DIST. PANELS, FEEDERS, AND INDIVIDUAL POWER CIRCUITS TO DANTHERM FILTRATION CONTROL PANELS TO BE FURNISHED BY CUSTOMER.
- 3 - ALL FIELD WIRING FROM DANTHERM FILTRATION. CONTROL PANELS TO MOTORS AND CONTROLS TO BE FURNISHED BY ELECTRICAL CONTRACTOR.
- 4 - FIELD WIRING SHALL INCLUDE CONDUCTORS, CONDUITS, FITTINGS, AND DISCONNECTS WHERE REQUIRED BY N.E.C. AND LOCAL CODES.
- 5 - IT SHALL BE THE RESPONSIBILITY OF THE ELECTRICAL CONTRACTOR TO INSURE THAT ALL FIELD WIRING MEETS N.E.C. AND ALL LOCAL CODES.
- 6 - THE EXACT LOCATION OF CONTROL PANELS TO BE DETERMINED BY CUSTOMER. ELECTRICAL CONTRACTOR TO VERIFY LOCATION AND INSTALL PANELS.

NFK 5HJ / 1 BL FILTER

NO. OF BAGS-250.
TOTAL FILTER AREA - 4000 SQ. FT.
EFFECTIVE EXPLOSION AREA - 28.3 SQ. FT.
MAXIMUM VOLUME 25,000 CUBIC FEET PER MINUTE
AIR TO CLOTH RATIO AT MAX. VOLUME - 6.25 : 1
SHIPPING WEIGHT OF FILTER UNIT - APPROX. 6,800 lbs.

ELECTRICAL REQUIREMENTS

NFK-FILTER CONTROL PANEL

NF2000-5 HJLR/1BL. FILTER CONTROL PANEL
(NOTE: ENCLOSURE IS NEMA 12 RATED, MUST BE LOCATED INSIDE)

STARTERS FOR:

MOTOR	DESIG.	HP.	FLA./460V.
ROTARY VALVE	RV1	1.0	2.1
CHAIN DRIVE	CD1	1.5	3.0
REG. FANS	M1-M3	2.0	3.4
TOTAL CONNECTED LOAD			8.5 AMPS

REVISE
575V

APPROVED FOR CONSTRUCTION

BY: Chuck M

FOR: FAQ

DATE: 11-1-06

WITH CORRECTIONS/CHANGES AS NOTED

CONTROL CIRCUITS FOR:

NOTE: ALL LISTED VOLTAGES ARE INTERNALLY SUPPLIED BY THE VARIOUS CONTROL PANELS.
UNLESS OTHERWISE NOTED.

CIRCUIT	DESIG.	VOLTAGE	POWER
* M.H. FAN #1	MF1	LINE	N/A
* M.H. FAN #2	MF2	LINE	N/A
CHAIN MOTION SENSOR	CSM1	24VDC	N/A
HOPPER DOOR LIMIT SWITCH	HD1-HD2	24VDC	N/A

MOTOR STARTER PANELS

A STARTER PANEL CONSIST OF MOTOR STARTER AND OVERLOAD RELAY.
(NOTE: ENCLOSURES ARE NEMA 12 RATED, MUST BE LOCATED INSIDE)

STARTERS FOR:

MOTOR	DESIG.	HP.
* M.H. FAN#1	MF1	25
* M.H. FAN#2	MF2	60
TOTAL CONNECTED LOAD		

* OPTIONAL EQUIPMENT

REVISE
FLA./460V.
34
77
111 AMPS

575V/34

CUSTOMER SUPPLIED POWER: ~~460V.~~ 3 PHASE, 60 HZ.
ALL MOTOR CKTS.: 3 WIRE, 3 PHASE, 460V., 60 HZ.
ALL CONTROL CKTS.: (UNLESS OTHER WISE NOTED): 120V., 1 PHASE
(STEP DOWN TRANSFORMERS FOR CONTROL CKTS. LOCATED IN N.S.I. PANEL)

TOLL FREE: 800.533.5286
PHONE: 336.821.0800
FAX: 336.821.0890



102 TRANSIT AVENUE
P.O. BOX 429
THOMASVILLE, N.C. 27361-0429

SCALE: 1"=10'-0"
DATE: 6-1-2005
DWG. NO.: 1A150511