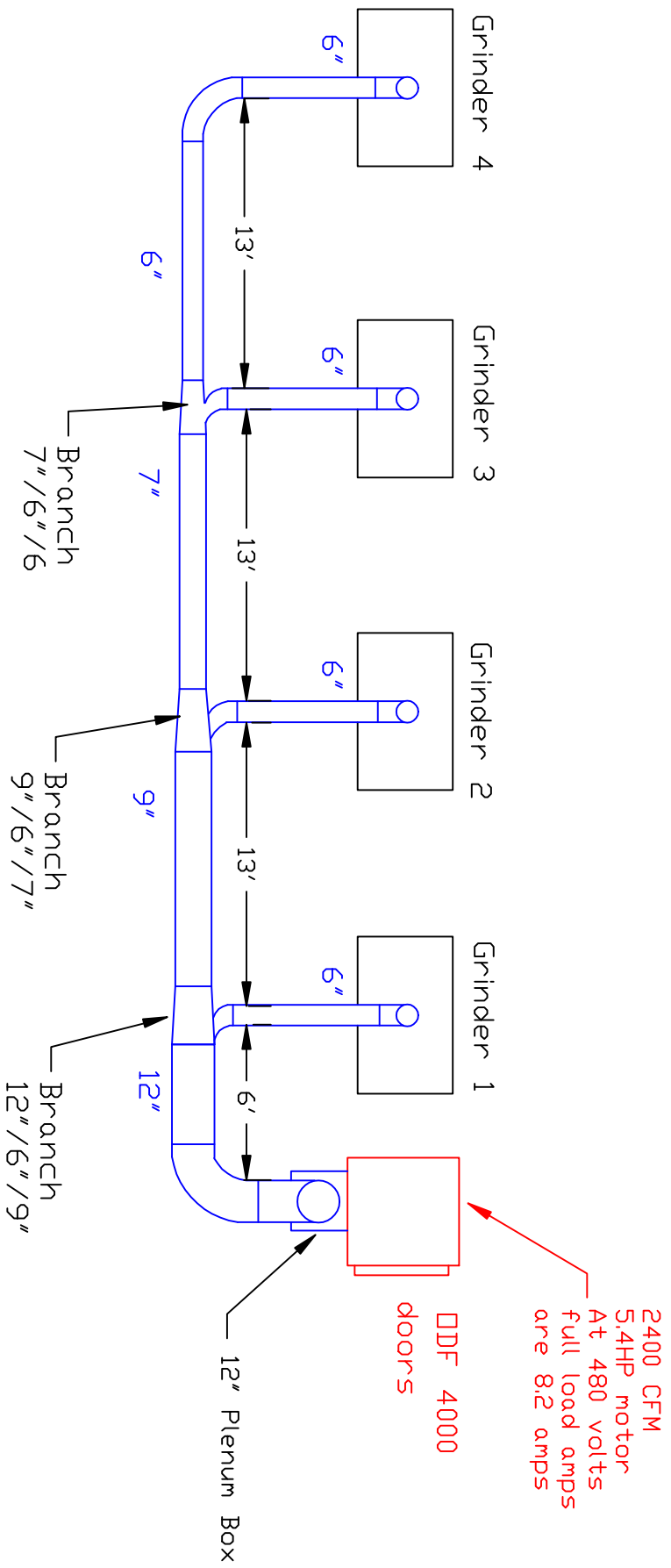


Ductwork Layout for Mod 3 Plan View



Notes:

- A) Each drop will have a butterfly damper for air flow adjustment.
- B) Bottom of ductwork about 12' off of floor.
- C) Absolent to have P-Trap on drain to allow for proper drainage while running.
- D) CFM per drop os 600 CFM

Delskar Environmental Products 95 Cypress Drive 27596 Raleighville, NC # 919-570-2862 F# 919-570-2863	
Project: Delphi	
Drawing: Duct layout Mod3	
Date: 4/9/10	Drawn by: RAV
Sheet No: 2 of 3	