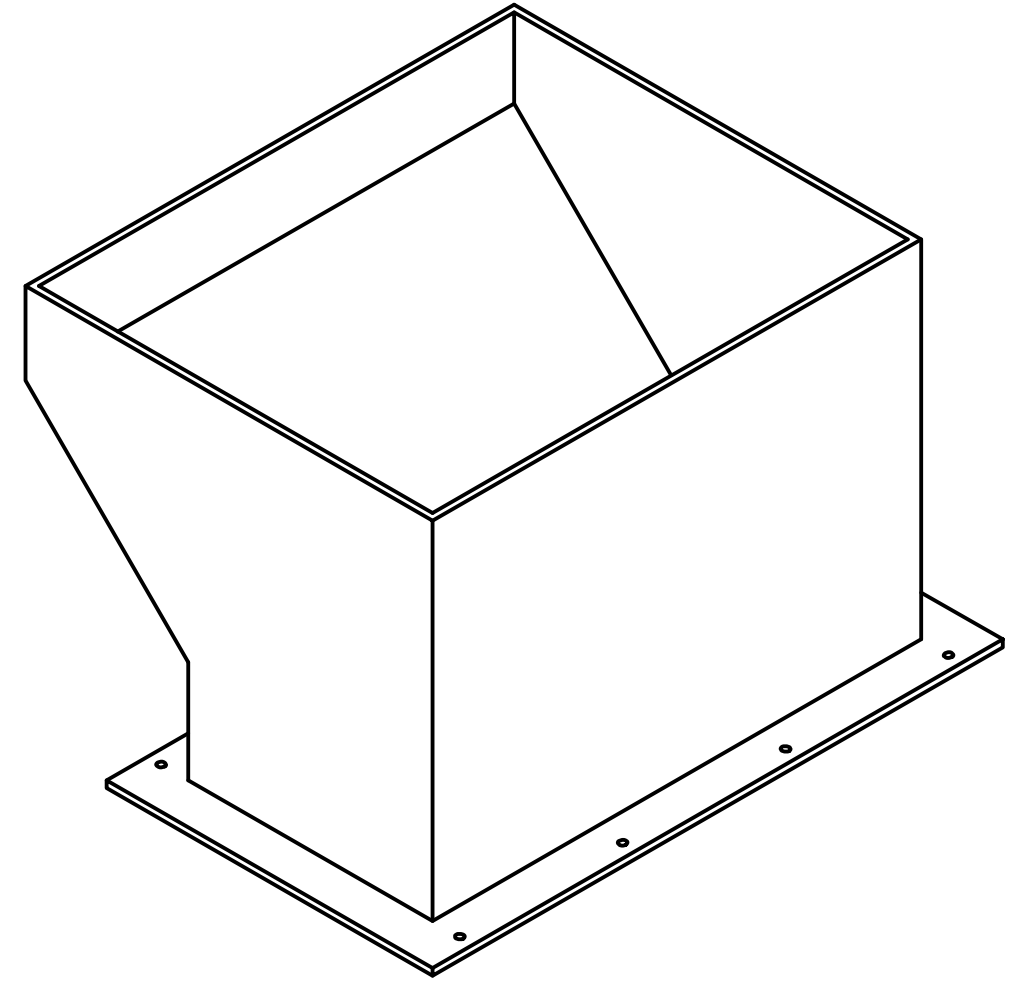
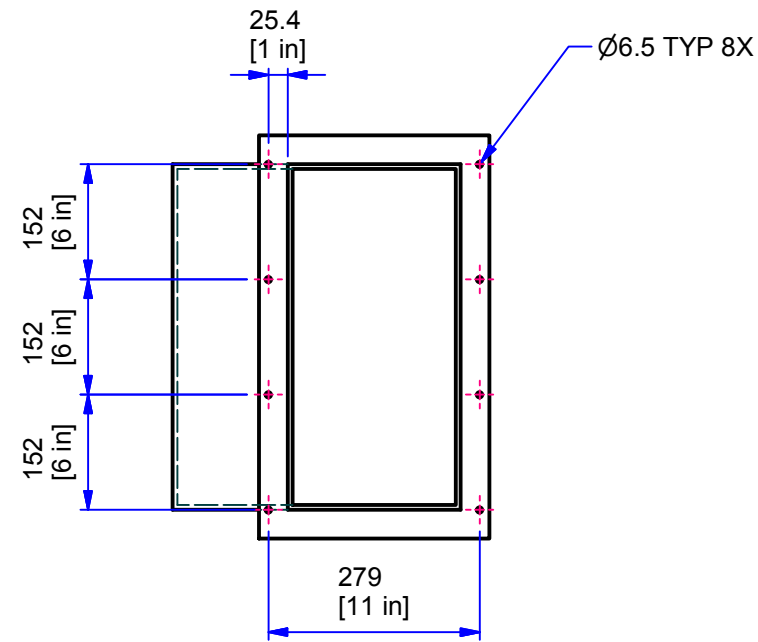
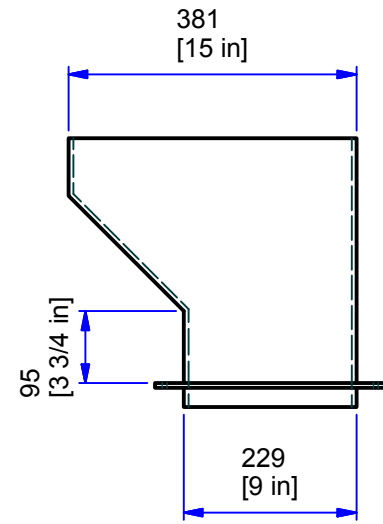
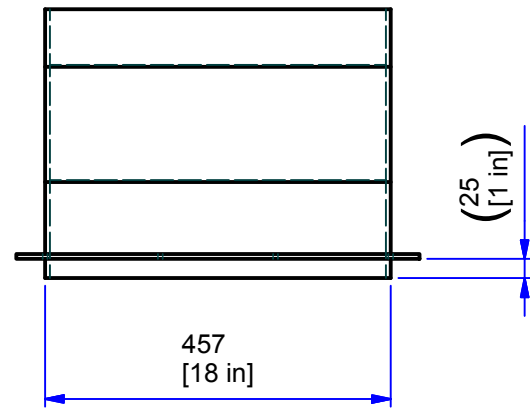


This drawing and the information / designs thereon are the property of Hydromat Inc. Such information / designs, drawings or any copies thereof, whole or in part, may not be disclosed or distributed to other parties without expressed written consent and in any case may only be used for the benefit of Hydromat Inc. or in conjunction with purchased goods or services rendered to or purchased from Hydromat Inc.

SYM.	REVISION RECORD	DATE	BY
------	-----------------	------	----



UNLESS IDENTIFIED "CONTROLLED COPY" DRAWING IS FOR REFERENCE ONLY

VENDOR INSPECTION CERTIFICATION
ALL PARTS MUST MEET DRAWING SPECIFICATIONS
SIGNED DRAWING MUST BE RETURNED WITH PATRS

INSPECTION BY: _____ DATE: _____

METRIC TOLERANCES (EXCEPT AS NOTED)
CAM
A

NO DECIMAL (X) ± 0.5
ONE DECIMAL (.X) ± 0.25
TWO DECIMAL (.XX) ± 0.10

REFERENCE DIMENSION: (X.XXX)

ANGULAR TOLERANCES: ± 1/2° (30')

APPROVED _____

CORNERBREAK 0.2-0.4 X 45° AND REMOVE BURRS
ALL GD&T REFERENCE ASME STANDARD Y14.5M-1994

NEXT ASSEMBLY _____

THIRD ANGLE PROJECTION



PX6 MIST COLLECTOR REFERENCE HOLE PATTERN

DRAWN BY Crowley
CHECKED BY _____

SCALE: _____ DATE: 4/9/2012
DRAWING NO. Plenum Mock Up
REV _____