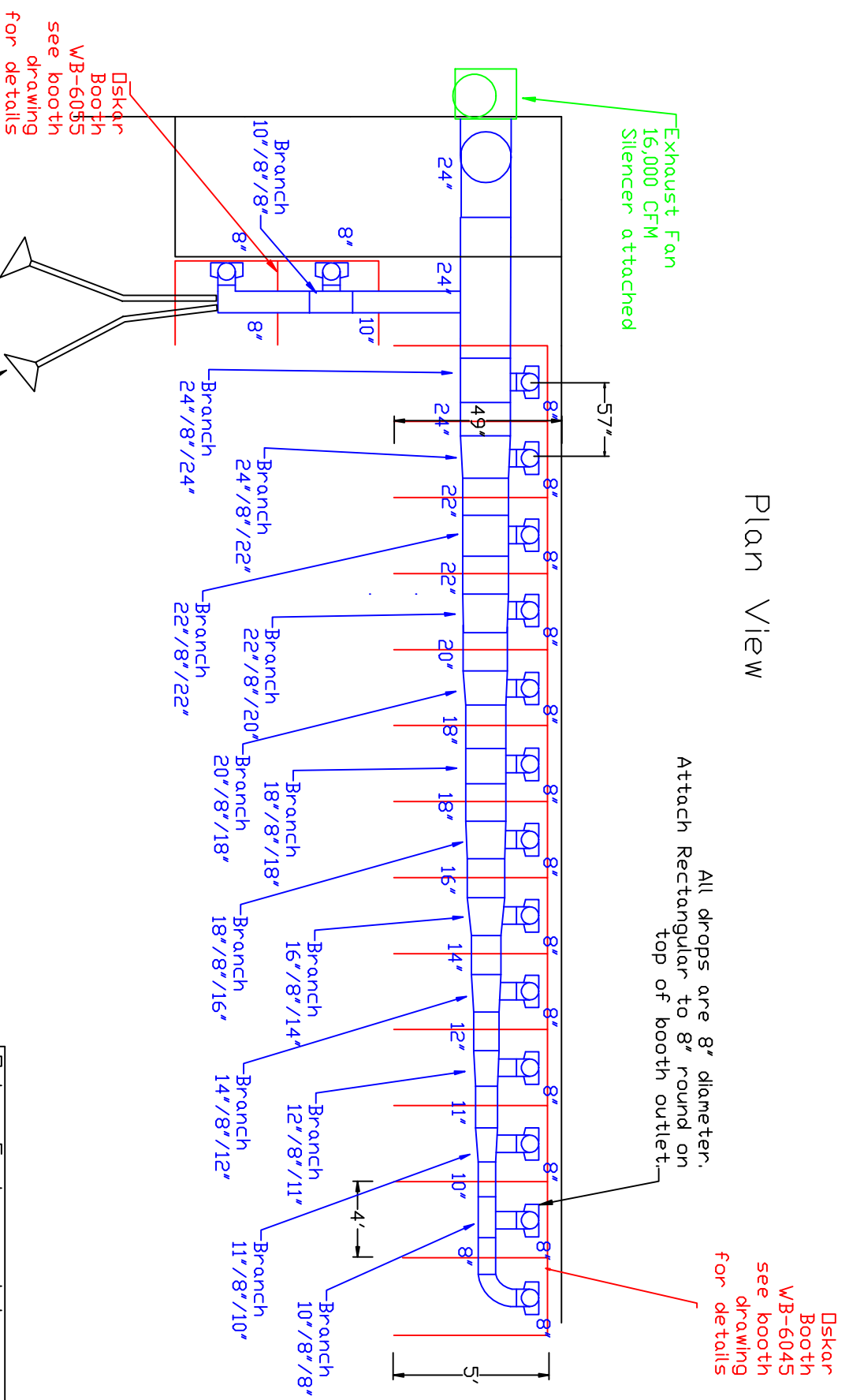


# Ductwork / Booth Layout for Oskar system

## Plan View



Exhaust Fan  
16,000 CFM  
Silencer attached

Oskar Booth  
WB-6045  
see booth  
drawing  
for details

All drops are 8" diameter.  
Attach Rectangular to 8" round on  
top of booth outlet.

Oskar Booth  
WB-6045  
see booth  
drawing  
for details

Two Oskar Fume Arms  
6" dia by 10" reach

Oskar Environmental
102 AG DRIVE
Youngsville, NC 27596
Ph 919-562-7181 F# 919-562-7182
<b>Oskar</b>
Project: Howard Tech Sch
Drawing: Booth duct layout
Date: 8/24/10 Drawn by: RAV