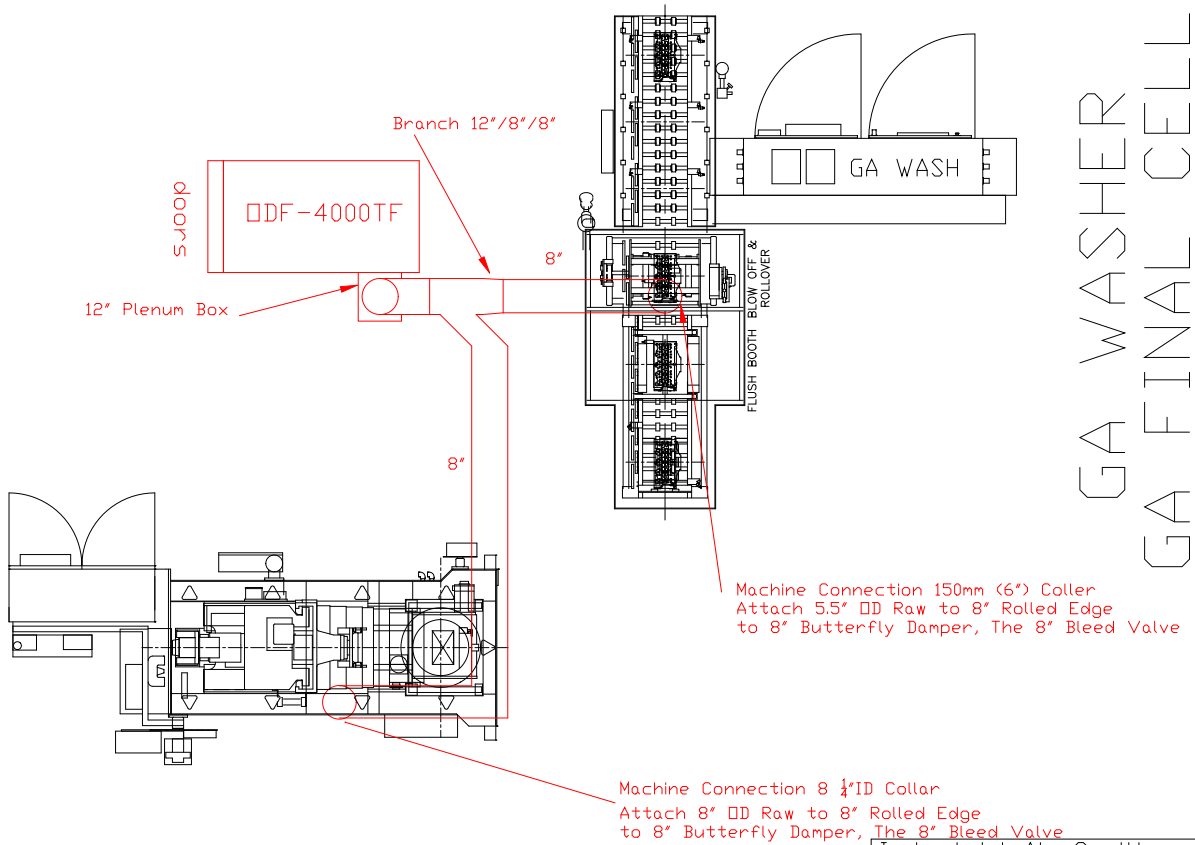


# Plan View of Ductwork Layout Head #4 GA Wash & GA Mill



**Notes:**

- A) Each drop will have a Butterfly damper for airflow adjustment.
- B) Each drop will have a Bleed in valve to allow for balancing.
- C) DDF 4000TF has 5HP 460volt 3Phase motor. Full load amps are 8.33amps.
- D) Drain line: P-Trap made of 3/4" Galvanized with ball valve and unions. IAQ to provide. Honda to provide piping to sump.

Industrial Air Quality		<b>IAQ</b>
95 Cypress Drive Youngsville, NC 27596		
P# 919-562-7181 F# 919-562-7182		
Project: Honda Canada		
Drawing: Head#4 GA Wash&Mill		
Date: 03/29/08	Drawn by: W/WB	
Sheet No:		