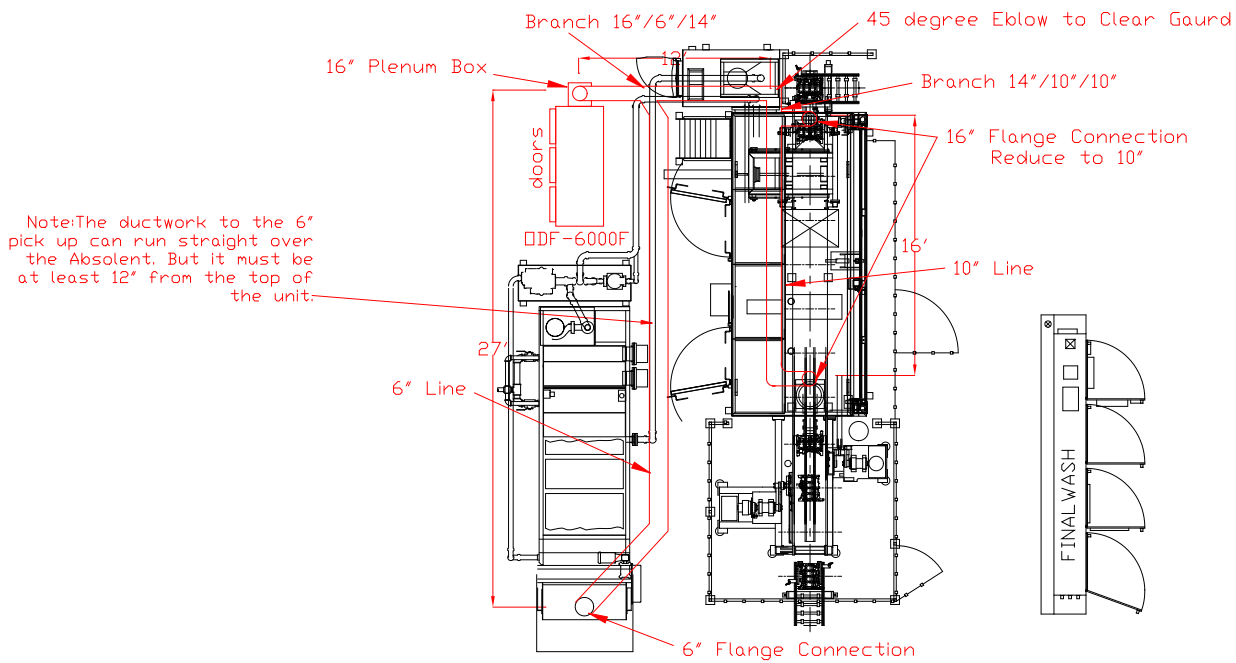


Plan View of Ductwork Layout

Block Line - #12 - Final Washer



- Notes:
- A) Each drop will have a Butterfly damper for airflow adjustment.
 - B) Each drop will have a Bleed in valve to allow for balancing.
 - C) DDF 6000F has 3 - 3.5HP 460volt 3Phase motors. Full load amps are 4.6amps each.
 - D) Drain line: P-Trap made of 3/4" Galvanized with ball valve and unions. IAQ to provide. Honda to provide piping to sump.

Industrial Air Quality		IAQ
95 CYPRESS DRIVE Youngsville, NC 27596		
P# 919-562-7181 F# 919-562-7182		
Project: Honda Canada		
Drawing: Block #12 Final Washer		
Date: 03/25/08		Drawn by: W/WB
Sheet No:		